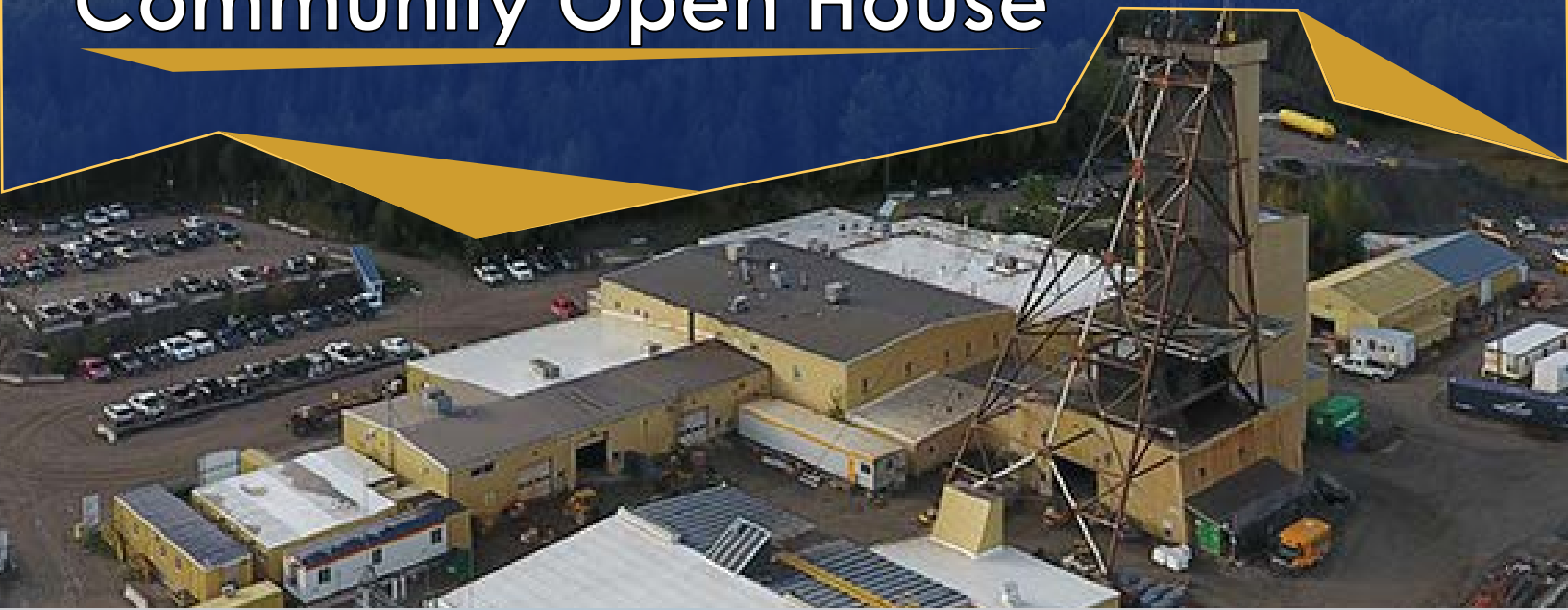


Community Open House



Kirkland Lake Gold is investing in a new shaft at Macassa that will support production growth, improved working conditions at the mine and assist us with future exploration activities so we can keep growing well into the future.

We invite members of the community to hear what we are planning, ask questions and give your feedback.

Come meet Kirkland Lake Gold representatives to hear more about our plans!



Heritage North
400 Government Rd. W.
Kirkland Lake

Feb 22, 2018
5:00pm – 7:00pm
Presentation 5:30pm



KIRKLAND LAKE GOLD

www.klgold.com | TSX:KL | NYSE:KL | ASX:KLA