

# ULTA<sup>®</sup>

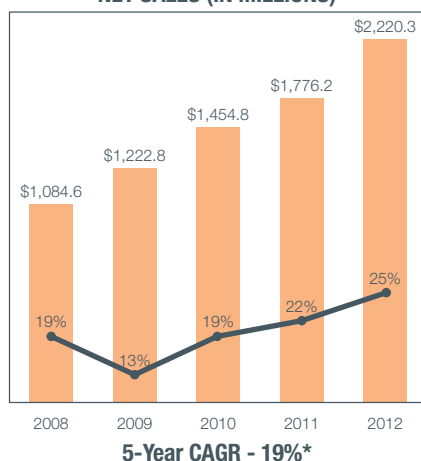
B E A U T Y



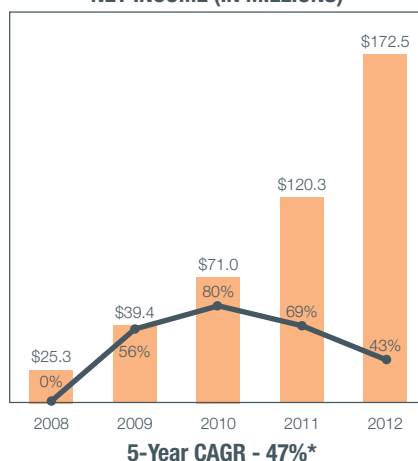
2012  
ANNUAL REPORT

# Financial Highlights

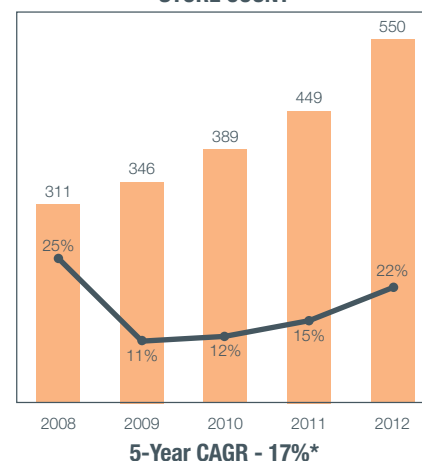
### NET SALES (IN MILLIONS)



### NET INCOME (IN MILLIONS)



### STORE COUNT



## FISCAL YEAR ENDED (1)

(In thousands, except per share and per square foot data)

### Income Statement:

	February 2, 2013	January 28, 2012	January 29, 2011	January 30, 2010	January 31, 2009
Net sales (2)	\$ 2,220,256	\$ 1,776,151	\$ 1,454,838	\$ 1,222,771	\$ 1,084,646
Cost of sales	1,436,582	1,159,311	970,753	846,202	752,939
Gross profit	783,674	616,840	484,085	376,569	331,707
Selling, general and administrative expenses	488,880	410,658	358,106	302,413	271,095
Pre-opening expenses	14,816	9,987	7,095	6,003	14,311
Operating income	279,978	196,195	118,884	68,153	46,301
Interest expense	185	587	755	2,202	3,943
Income before income taxes	279,793	195,608	118,129	65,951	42,358
Income tax expense	107,244	75,344	47,099	26,595	17,090
Net income	\$ 172,549	\$ 120,264	\$ 71,030	\$ 39,356	\$ 25,268

### Net income per common share:

Basic	\$ 2.73	\$ 1.96	\$ 1.20	\$ 0.68	\$ 0.44
Diluted	\$ 2.68	\$ 1.90	\$ 1.16	\$ 0.66	\$ 0.43

### Weighted average common shares outstanding:

Basic	63,250	61,259	58,959	57,915	57,425
Diluted	64,396	63,334	61,288	59,237	58,967

Dividends declared per common share	\$ 1.00	\$ -	\$ -	\$ -	\$ -
-------------------------------------	---------	------	------	------	------

### Other Operating Data:

Comparable store sales increase (3)	8.8%	10.9%	11.0%	1.4%	0.2%
Number of stores end of year	550	449	389	346	311
Net sales per average total square foot (4)	\$ 418	\$ 402	\$ 382	\$ 353	\$ 366
Capital expenditures	188,578	128,636	97,115	68,105	110,863
Depreciation and amortization	88,233	75,931	64,936	62,166	51,445

### Balance Sheet Data:

Cash and cash equivalents	\$ 320,475	\$ 253,738	\$ 111,185	\$ 4,017	\$ 3,638
Working capital	568,257	415,377	241,032	136,417	159,695
Property and equipment, net	483,059	376,985	326,099	290,861	292,224
Total assets	1,275,249	957,217	730,488	553,635	568,932
Total debt	-	-	-	-	106,047
Total stockholders' equity	786,942	584,704	402,533	292,608	244,968

\* 5-Year Compound Annual Growth Rate (CAGR) is based on fiscal 2007 net sales, net income and store count of \$912.1 million, \$25.3 million and 249, respectively.

(1) Our fiscal year-end is the Saturday closest to January 31 based on a 52/53-week year. Each fiscal year consists of four 13-week quarters, with an extra week added onto the fourth quarter every five or six years.

(2) Fiscal 2012 was a 53-week operating year and the 53rd week represented approximately \$40 million in net sales.

(3) Comparable store sales increase reflects sales for stores beginning on the first day of the 14th month of operation. Remodeled stores are included in comparable store sales unless the store was closed for a portion of the current or comparable prior year.

(4) Net sales per average total square foot was calculated by dividing net sales for the year by the average square footage for those stores open during each year.

## **Dear Stakeholder,**

The ULTA Beauty team drove exceptional results in 2012, delivering record sales and profits. ULTA Beauty remains the only national beauty retailer that offers prestige, mass and salon products and services under one roof. Our differentiated model combines convenient locations, value and an unmatched breadth of assortment of products and services with a friendly and inviting specialty store experience. This winning formula continues to gain market share in the attractive, fragmented beauty industry, enhancing ULTA Beauty's position as a beauty authority.

Strong execution of our multi-year growth strategy was evident in the many milestones achieved during the year. We are very pleased with the team's accomplishments and excited about the opportunities ahead.

## **2012 Financial Performance Highlights**

Net sales increased 25% to \$2.2 billion driven by an 8.8% increase in comparable store sales. We gained market share across all major categories, with particular strength in prestige cosmetics and skincare. Operating income rose 43% as we continued to expand product margins and deliver operating efficiencies. Our operating margin increased 160 basis points to 12.6% of net sales, steadily progressing towards our mid-teens operating margin goal. Earnings per share increased 41% to \$2.68 per diluted share.

## **Our Five Point Growth Strategy**

During 2012, we made significant progress on each of our five key growth initiatives: accelerating store growth; introducing new products, services and brands; enhancing our loyalty program; broadening our marketing reach; and increasing our digital focus including [ulta.com](http://ulta.com).

### **Store Growth**

We opened 101 net new stores in 2012, increasing square footage by 23%. We ended the year with 550 locations, on our way to our goal of 1,200 stores in the U.S. We remodeled 21 stores, and now have over 90% of our store base in our newest formats. New store productivity continues to be very strong, and we are pleased with the quality of our real estate.

### **New Products, Services and Brands**

We continue to add excitement to our stores by adding new brands, products and services to our portfolio, reinforcing our positioning as a beauty and trend authority. We have added 65 new brands since 2009, and added 20 new brands in 2012 alone, including The Body Shop, Carol's Daughter, Dr. Brandt and Juice Beauty. We also expanded our service offering in our salons, rolling out OPI gel nail service chain-wide, and adding microdermabrasion and hair extension services in 200 stores. We also enhanced our prestige brand offering in 2012, ending the year with 43 stores with a Clinique boutique and 79 stores with a Lancôme boutique.

### **Loyalty Programs**

We grew our valuable loyalty programs, adding two million members during 2012, to end the year with 11 million loyalty club members. During the year, we converted the central region of the country to the ULTAmate Rewards® program, which is now in about half of our stores. Customers prefer this more flexible program and we expect to convert all of our customers to this program over time. We also implemented a new Customer Relationship Management (CRM) program, enabling more sophisticated one-to-one marketing. We believe CRM represents a compelling multi-year opportunity.

## Marketing

We continue to build upon our strong foundation of print marketing with national media, digital marketing and social media. In 2012, we partnered with Allure Magazine to publish a special ULTA Beauty edition to highlight our position as a beauty and trend authority. We are also expanding into digital marketing to build our brand and reach new customers. Additionally we enhanced our social media strategy, with dedicated efforts on Facebook, Pinterest, Twitter and YouTube.

## Digital Strategy

We continue to evolve to a true multi-channel retailer as we build our e-commerce and digital capabilities. While sales from ulta.com represent a low single digit percentage of our sales today, this business is growing rapidly as we continue to enhance the customer experience with improved speed and content. During 2012, we launched new customer mobile applications, expanded our online assortment and increased our digital marketing presence.

## 2012 Financial Position

ULTA Beauty's financial position remains very strong and we generated over \$50 million in free cash flow in fiscal 2012 after investing \$189 million in capital. At year end, our debt-free balance sheet included \$320 million of cash and cash equivalents. During 2012, we paid a special cash dividend, returning \$63 million to shareholders.

Looking ahead to 2013, we are excited about the opportunity to further expand our market share of the \$100 billion beauty industry. We believe that ULTA Beauty will continue to drive rapid sales and earnings growth, while continuing to invest in the infrastructure needed to sustain the growth of our retail and digital businesses.

## 2013 Outlook

We are on track to open 125 new stores in 2013, representing 22% square footage growth. We continue to see a strong pipeline of new products, services and brands to enhance our offering, and are delighted to continue our expansion of Clinique boutiques to additional stores. To provide a solid foundation for ULTA Beauty's growth in the years ahead, we plan to invest in several areas of the business. This will include upgrading our warehouse management systems and preparing for an additional distribution center in 2014. We plan to invest substantial resources in our website redesign, fulfillment capabilities and in people to continue to drive rapid growth in our e-commerce business. We plan to invest in digital marketing to reach the millions of women who have yet to discover the ULTA Beauty brand and invest in store labor to support the growth of our prestige categories.

ULTA Beauty remains a compelling growth story which continues to build upon our five point strategy. We are confident in our ability to deliver our long term financial model based on 4% to 6% comparable store sales, including the impact of our e-commerce business, combined with 15% to 20% square footage growth. This model is expected to yield 25% to 30% earnings growth and targets a mid-teens operating margin in the medium term.

We are very proud of ULTA Beauty's 2012 performance and sincerely thank each of our 16,000 dedicated associates for creating a compelling experience for our guests. We would also like to thank our shareholders, guests, vendor partners and our Board of Directors for their continued support.

Sincerely yours,



Dennis K. Eck  
Interim Chief Executive Officer



Scott Settersten  
Chief Financial Officer

UNITED STATES SECURITIES AND EXCHANGE COMMISSION  
Washington, DC 20549

FORM 10-K

Annual Report Pursuant to Section 13 or 15(d) of the Securities Exchange Act of 1934  
For the fiscal year ended February 2, 2013

or

Transition Report Pursuant to Section 13 or 15(d) of the Securities Exchange Act of 1934  
For the transition period from \_\_\_\_\_ to \_\_\_\_\_

Commission File Number: 001-33764

ULTA SALON, COSMETICS & FRAGRANCE, INC.  
*(Exact name of Registrant as specified in its charter)*

Delaware  
*(State or other jurisdiction of  
incorporation or organization)*

1000 Remington Blvd., Suite 120  
Bolingbrook, Illinois  
*(Address of principal executive offices)*

36-3685240  
*(I.R.S. Employer  
Identification No.)*

60440  
*(Zip code)*

Registrant's telephone number, including area code: (630) 410-4800

Securities registered pursuant to Section 12(b) of the Act:

Title of each class

Name of each exchange on which registered

Common stock, par value \$0.01 per share

The NASDAQ Global Select Market

Securities registered pursuant to Section 12(g) of the Act: None

Indicate by check mark if the registrant is a well-known seasoned issuer, as defined in Rule 405 of the Securities Act.  Yes  No

Indicate by check mark if the registrant is not required to file reports pursuant to Section 13 or Section 15(d) of the Act.  Yes  No

Indicate by check mark whether the registrant (1) has filed all reports required to be filed by Section 13 or 15(d) of the Securities Exchange Act of 1934 during the preceding 12 months (or for such shorter period that the registrant was required to file such reports), and (2) has been subject to such filing requirements for the past 90 days.  Yes  No

Indicate by check mark whether the registrant has submitted electronically and posted on its corporate Web site, if any, every Interactive Data File required to be submitted and posted pursuant to Rule 405 of Regulation S-T (§ 232.405 of this chapter) during the preceding 12 months (or for such shorter period that the registrant was required to submit and post such files).  Yes  No

Indicate by check mark if disclosure of delinquent filers pursuant to Item 405 of Regulation S-K (§229.405 of this chapter) is not contained herein, and will not be contained, to the best of registrant's knowledge, in definitive proxy or information statements incorporated by reference in Part III of this Form 10-K or any amendment to this Form 10-K.

Indicate by check mark whether the registrant is a large accelerated filer, an accelerated filer, a non-accelerated filer, or a smaller reporting company. See definitions of "large accelerated filer," "accelerated filer" and "smaller reporting company" in Rule 12b-2 of the Exchange Act. (Check one):

Large accelerated filer  Accelerated filer  Non-accelerated filer  Smaller reporting company   
(Do not check if a smaller reporting company)

Indicate by check mark whether the registrant is a shell company (as defined in Rule 12b-2 of the Act).  Yes  No

The aggregate market value of the voting stock held by non-affiliates of the registrant, based upon the closing sale price of the common stock on July 28, 2012, as reported on the NASDAQ Global Select Market, was approximately \$4,199,998,000. Shares of the registrant's common stock held by each executive officer and director and by each entity or person that, to the registrant's knowledge, owned 5% or more of the registrant's outstanding common stock as of July 28, 2012 have been excluded in that such persons may be deemed to be affiliates of the registrant. This determination of affiliate status is not necessarily a conclusive determination for other purposes.

The number of shares of the registrant's common stock, par value \$0.01 per share, outstanding as of March 28, 2013 was 63,670,003 shares.

DOCUMENTS INCORPORATED BY REFERENCE

Information required in response to Part III of Form 10-K (Items 10, 11, 12, 13 and 14) is hereby incorporated by reference to the registrant's Proxy Statement for the Annual Meeting of Stockholders to be held during the current fiscal year. The Proxy Statement will be filed by the registrant with the SEC no later than 120 days after the close of the fiscal year covered by this Form 10-K.

**ULTA SALON, COSMETICS & FRAGRANCE, INC.**

**TABLE OF CONTENTS**

**Part I**

Item 1.	Business .....	3
Item 1A.	Risk Factors .....	12
Item 1B.	Unresolved Staff Comments .....	23
Item 2.	Properties .....	24
Item 3.	Legal Proceedings .....	25
Item 4.	Mine Safety Disclosures .....	25

**Part II**

Item 5.	Market for Registrant’s Common Equity, Related Stockholder Matters and Issuer Purchases of Equity Securities .....	26
Item 6.	Selected Financial Data .....	29
Item 7.	Management’s Discussion and Analysis of Financial Condition and Results of Operations .....	30
Item 7A.	Quantitative and Qualitative Disclosures about Market Risk .....	39
Item 8.	Financial Statements and Supplementary Data .....	40
Item 9.	Changes in and Disagreements with Accountants on Accounting and Financial Disclosure .....	40
Item 9A.	Controls and Procedures .....	40
Item 9B.	Other Information .....	40

**Part III**

Item 10.	Directors, Executive Officers and Corporate Governance .....	41
Item 11.	Executive Compensation .....	41
Item 12.	Security Ownership and Certain Beneficial Owners and Management and Related Stockholder Matters .....	41
Item 13.	Certain Relationships and Related Transactions, and Director Independence .....	41
Item 14.	Principal Accountant Fees and Services .....	41

**Part IV**

Item 15.	Exhibits and Financial Statement Schedules .....	42
----------	--	----



## FORWARD LOOKING STATEMENTS

This Annual Report on Form 10-K contains forward-looking statements within the meaning of Section 21E of the Securities Exchange Act of 1934, as amended, and the safe harbor provisions of the Private Securities Litigation Reform Act of 1995, which reflect our current views with respect to, among other things, future events and financial performance. You can identify these forward-looking statements by the use of forward-looking words such as “outlook,” “believes,” “expects,” “plans,” “estimates,” or other comparable words. Any forward-looking statements contained in this Form 10-K are based upon our historical performance and on current plans, estimates and expectations. The inclusion of this forward-looking information should not be regarded as a representation by us or any other person that the future plans, estimates or expectations contemplated by us will be achieved. Such forward-looking statements are subject to various risks and uncertainties, which include, without limitation: the impact of weakness in the economy; changes in the overall level of consumer spending; changes in the wholesale cost of our products; the possibility that we may be unable to compete effectively in our highly competitive markets; the possibility that our continued opening of new stores could strain our resources and have a material adverse effect on our business and financial performance; the possibility that new store openings and existing locations may be impacted by developer or co-tenant issues; the possibility that the capacity of our distribution and order fulfillment infrastructure may not be adequate to support our recent growth and expected future growth plans; the possibility of material disruptions to our information systems; weather conditions that could negatively impact sales; our ability to attract and retain key executive personnel; our ability to successfully execute and implement our common stock repurchase program; and other risk factors detailed in our public filings with the Securities and Exchange Commission (the “SEC”), including risk factors contained in Item 1A, “Risk Factors” of this Annual Report on Form 10-K for the year ended February 2, 2013. We assume no obligation to update any forward-looking statements as a result of new information, future events or developments. References in the following discussion to “we”, “us”, “our”, “the Company”, “Ulta” and similar references mean Ulta Salon, Cosmetics & Fragrance, Inc. unless otherwise expressly stated or the context otherwise requires.

### Part I

#### Item 1. *Business*

##### Overview

Ulta Beauty (or Ulta, we, the Company) is the largest beauty retailer that provides one-stop shopping for prestige, mass and salon products and salon services in the United States. We focus on providing affordable indulgence to our customers by combining unmatched product breadth, value and convenience with the distinctive environment and experience of a specialty retailer. Key aspects of our business include:

*One-Stop Shopping.* Our customers can satisfy all of their beauty needs at Ulta. We offer a unique combination of over 20,000 prestige and mass beauty products organized by category in a bright, open store environment. The beauty products are arranged in self-service displays and full-service boutiques in a way that encourages our customers to play, touch, test, learn and explore. We believe we offer the widest selection of categories across prestige and mass cosmetics, fragrance, haircare, skincare, bath and body products and salon styling tools. We also offer a full-service salon and a wide range of salon haircare products in all of our stores.

*Our Value Proposition.* We believe our focus on delivering a compelling value proposition to our customers across all of our product categories is fundamental to customer loyalty. For example, we run frequent promotions and coupons for our mass brands, gift-with-purchase offers and multi-product gift sets for our prestige brands, and a comprehensive customer loyalty program.

*An Off-Mall Location.* Our stores are predominately located in convenient, high-traffic locations such as power centers. Our typical store is approximately 10,000 square feet, including approximately 950 square feet dedicated to our full-service salon. Our displays, store design and open layout provide the flexibility to respond to consumer trends and changes in our merchandising strategy.

We were founded in 1990 as a beauty retailer at a time when prestige, mass and salon products were sold through distinct channels — department stores for prestige products, drug stores and mass merchandisers for mass products, and salons and authorized retail outlets for professional hair care products. After extensive research, we recognized an opportunity to better satisfy how women want to shop for beauty products. We developed a unique retail approach by combining one-stop shopping, a compelling value proposition, convenient locations and an uplifting specialty retail experience. While we are currently executing on the core elements of our business strategy, we plan to continually refine our approach in order to further enhance the shopping experience for our customers.

## **Our competitive strengths**

We believe the following competitive strengths differentiate us from our competitors and are critical to our continuing success:

*Differentiated merchandising strategy with broad appeal.* We believe our broad selection of merchandise across categories, price points and brands offers a unique shopping experience for our customers. While the products we sell can be found in department stores, specialty stores, salons, drug stores and mass merchandisers, we offer all of these products in one retail format so that our customer can find everything she needs in one shopping trip. We appeal to a wide range of customers by offering over 500 brands, such as Bare Minerals and Urban Decay cosmetics, Chanel and Estée Lauder fragrances, Redken and Matrix haircare, as well as Dermalogica and Philosophy skincare and Clarisonic and Hot Tools personal care appliances. We also offer private label Ulta products in key categories, such as, cosmetics, skin care and bath. Because we offer a broad array of products in prestige, mass and salon, we appeal to a wide range of customers including women of all ages, demographics, and lifestyles.

*Our unique customer experience.* We combine unmatched product breadth, value and convenience with the distinctive environment and experience of a specialty retailer. We cater to the woman who loves to indulge in shopping for beauty products as well as the woman who is time constrained and comes to the store knowing exactly what she wants. Our distribution infrastructure consistently delivers an in-stock rate of greater than 95%, allowing our customers to find the products they are looking for. Our well-trained beauty advisors are not commission-based and therefore can provide unbiased and customized advice tailored to our customers' needs. Our customer service strategy, store locations, layout and design create a unique shopping experience, which we believe increases both the frequency and length of our customers' visits.

*Retail format poised to benefit from shifting channel dynamics.* Over the past several years, the approximately \$100 billion beauty products and salon services industry has experienced significant changes, including a shift in how manufacturers distribute and customers purchase beauty products. This has enabled the specialty retail channel to grow at a greater rate than the industry overall since at least 2000. We are capitalizing on these trends by offering a primarily off-mall, service-oriented specialty retail concept with a comprehensive product mix across categories and price points.

*Loyal and active customer base.* Approximately eleven million Ulta customers are members of our loyalty programs. We utilize this valuable proprietary database to drive traffic, better understand our customers' purchasing patterns and support new store site selection. We regularly employ a broad range of media, including digital, catalogs and newspaper inserts to drive traffic to our stores as well as entertain and educate our customers.

*Strong vendor relationships across product categories.* We have strong, active relationships with over 300 vendors, including Estée Lauder, Bare Minerals, Coty, L'Oréal and Procter & Gamble. We believe the scope of these relationships, which span the three distinct beauty categories of prestige, mass and salon and which have taken years to develop, create a significant impediment for other retailers to replicate our model. We work closely with our vendors to market both new and existing brands in a collaborative manner.

*Experienced management team.* We have an experienced senior management team with extensive retail experience that brings a creative merchandising approach and a disciplined operating philosophy to our business. We continue to expand the depth of our management team at all levels and in all functional areas to support our growth strategy.



## Growth strategy

We intend to expand our presence as a leading retailer of beauty products and salon services by pursuing the following primary growth strategies:

*Accelerate pace of new store expansion and grow to approximately 1,200 stores in the United States.* We believe that over the long-term, we have the potential to grow our store base to approximately 1,200 Ulta stores in the United States. Our internal real estate model takes into account a number of variables, including demographic and sociographic data as well as population density relative to maximum drive times, economic and competitive factors. We plan to continue opening stores both in markets in which we currently operate and new markets. We have been successful in opening new stores in diverse markets across the United States, allowing us to accelerate our new store growth rates consistent with our long-term target of 15% to 20%.

We opened 102 new stores during fiscal 2012, representing a 23% increase in square footage growth and a 67% increase in the number of new stores opened compared to 61 new stores in fiscal 2011. We also remodeled 21 stores and relocated 3 stores in fiscal 2012. Our fiscal 2012 and 2011 new store program represents primarily new stores opened in existing centers compared to prior years when the new store openings were more balanced between new and existing centers. This trend is expected to continue for several more years. The shift to more existing centers had no impact on new store performance.

	Fiscal Year				
	2008	2009	2010	2011	2012
Total stores beginning of period	249	311	346	389	449
Stores opened	63	37	47	61	102
Stores closed	(1)	(2)	(4)	(1)	(1)
Total stores end of period	311	346	389	449	550
Stores remodeled	8	6	13	17	21
Total square footage	3,240,579	3,613,840	4,094,808	4,747,148	5,847,393
Average square footage per store	10,420	10,445	10,526	10,573	10,632

*Expanding our offering by adding new products, brands and service.* Our strategy is to continue to expand our portfolio of products, brands and services both by capitalizing on the success of our existing vendor relationships and by identifying and developing new vendor relationships. Over the last several years we have added new products from existing vendors across product categories. We have also added a number of new brands in recent years, most notably in our prestige category which is currently the beauty industry's highest growth category. Brand additions include Coach, Dolce and Gabbana, Cartier, Fendi, Chloe, Marc Jacobs, Oscar de la Renta and Thierry Mugler in fragrance; Dermalogica, Philosophy, Dr. Brandt, Juice Beauty, Vichy and La Roche-Posay; Benefit, Butter London, CK One, and Laura Geller in cosmetics; and Carol's Daughter, DermOrganic, Living Proof, and Ouidad in hair care. We also offer haircare services in our full service salons as well as skin and brow services in most of our stores. We plan to continue expanding our portfolio of services in the future by establishing Ulta as a leading salon authority providing high quality and consistent services from our licensed stylists and introducing new beauty-related services.

*Enhancing our successful loyalty programs.* We have approximately eleven million active Ulta customers who are enrolled in our loyalty programs. Loyalty member transactions represent more than fifty percent of our annual total net sales, and the transaction data demonstrates that loyalty members shop with higher frequency and spend more per visit as compared to non-members. We currently operate two loyalty programs, ULTAmate Rewards and The Club at Ulta. We have been converting loyalty members from The Club at Ulta, a certificate program, to the ULTAmate Rewards program which is a points-based program. Currently, approximately half of our stores are on the points-based program and we expect to roll out this program to additional markets in the future. Both loyalty programs provide a robust database of customer and shopping behavior. During 2012, we implemented a new Customer Relationship Management tool to enable customer segmentation and one-on-one marketing communications tailored to our customers' unique beauty needs. We believe our loyalty programs combined with our growing Customer Relationship Management capabilities provide significant long-term opportunity for Ulta.

*Broadening our marketing reach.* We believe our marketing initiatives are a key component of our success, providing an effective means to introduce new products, brands and services to our existing and potential new customers. We have historically utilized primarily direct mail advertising, catalogues and newspaper inserts to communicate with our customers. Our national magazine print advertising campaign exposes potential new customers to our retail and digital businesses. We plan to continue to leverage our print marketing while expanding our reach into other marketing channels, including digital marketing, social media and e-mail marketing. We plan to continue to focus on our in-store marketing and in store special events as an additional means of educating our customers and increasing the frequency of their visits to our stores.

*Enhancing and expanding our digital business.* Our website serves two roles: to generate direct channel sales and profits and to communicate with our customers in an interactive, enjoyable way to reinforce the Ulta brand and drive traffic to our stores and website. We continue to aggressively develop and add new website features and functionality, marketing programs, product assortment and new brands and multi-channel integration points. We intend to establish ourselves over time as a leading online beauty resource by providing our customers with a rich online experience for information on key trends and products, editorial content, expanded assortments, leading website features and functionality and social media content. Through our continued enhancements and multi-channel marketing initiatives, we believe we are well positioned to capitalize on the growth of Internet sales of beauty products. We believe our website and retail stores provide our customers with an integrated multi-channel shopping experience and increased flexibility for their beauty buying needs.

*Improving our operating margin.* We plan to continue to improve our operating results by leveraging our existing infrastructure and continually optimizing the efficiency of our operations. We will continue to make investments in our information systems to enable us to enhance our efficiency in areas such as merchandise planning and allocation, inventory management, distribution and point of sale (POS) functions. We believe we will continue to improve our profitability by reducing our operating expenses as a percentage of net sales, in particular supply chain, general corporate overhead and fixed store expenses.

## **Our market**

We operate within the large and growing U.S. beauty products and salon services industry. This market represents approximately \$100 billion in retail sales, according to Euromonitor International and IBIS World Inc. The approximately \$59 billion beauty products industry includes color cosmetics, haircare, fragrance, bath and body, skincare, salon styling tools and other toiletries. Within this market, we compete across all major categories as well as a range of price points by offering prestige, mass and salon products. The approximately \$41 billion salon services industry consists of hair, skin and nail services.

Distribution for beauty products is varied. Prestige products are typically purchased in department or specialty stores, while mass products and staple items are generally purchased at drug stores, food retail stores and mass merchandisers. In addition, salon haircare products are sold in salons and authorized professional retail outlets.

## **Competition**

Our major competitors for prestige and mass products include traditional department stores such as Macy's and Nordstrom, specialty stores such as Sephora and Bath & Body Works, drug stores such as CVS/pharmacy and Walgreens, mass merchandisers such as Target and Wal-Mart and the online businesses of the aforementioned retailers. We believe the principal bases upon which we compete are the quality and assortment of merchandise, our value proposition, the quality of our customers' shopping experience and the convenience of our stores as one-stop destinations for beauty products and salon services.

The market for salon services and products is highly fragmented. Our competitors for salon services and products include Regis Corp., Sally Beauty, JCPenney salons and independent salons.

## **Stores**

Our stores are predominately located in convenient, high-traffic locations such as power centers. Our typical store is approximately 10,000 square feet, including approximately 950 square feet dedicated to our full-service salon. We opened 102 stores in fiscal 2012 and the average investment required to open a new Ulta store is

approximately \$1.0 million, which includes capital investments, net of landlord contributions, pre-opening expenses, and initial inventory, net of payables. However, our net investment required to open new stores and the net sales generated by new stores may vary depending on a number of factors, including geographic location. As of February 2, 2013, we operated 550 stores in 45 states.

### **Store remodel program**

Our retail store concept, including physical layout, displays, lighting and quality of finishes, has continued to evolve over time to match the rising expectations of our customers and to keep pace with our merchandising and operating strategies. We have a formal store remodel program in place to update our older stores to provide a consistent shopping experience across all of our locations. We remodeled 21 stores in fiscal 2012. Our newer store prototype, including new stores and remodels, represents approximately 90% of our store base. We continue to evolve this program to update older stores with a consistent look and experience to drive additional customer traffic and increase our sales and profitability. The remodel store selection process is subject to the same discipline as our new store real estate decision process. Our focus is to remodel the oldest, highest performing stores first, subject to criteria such as rate of return, lease terms, market performance and quality of real estate. We also consider remodeling all relevant stores in a particular geography when appropriate, which allows us to present a consistent brand identity across an entire market. The average investment to remodel a store in fiscal 2012 was approximately \$0.9 million. Each remodel takes approximately three months to complete, during which time we keep the store open.

### **Salon**

We operate full-service salons in all of our stores. Our current Ulta store format includes an open and modern salon area with approximately eight to ten stations. The entire salon area is approximately 950 square feet with a concierge desk, skin treatment room or dedicated skin treatment area, semi-private shampoo and hair color processing areas. Each salon is a full-service salon offering haircuts, hair coloring and permanent texture, with most salons also providing facials and waxing. We continue to expand our service offering, adding services such as gel manicures, microdermabrasion and hair extensions to select locations. We employ licensed professional stylists and estheticians who offer highly skilled services as well as an educational experience, including consultations, styling lessons, skincare regimens, and at-home care recommendations.

### **Ulta.com**

We established Ulta.com to give our customers an integrated multi-channel buying experience by providing them with an opportunity to access product offerings and information beyond our brick-and-mortar retail stores. The Ulta.com website and experience supports the key elements of the Ulta brand proposition and provides access to more than 16,000 beauty products from hundreds of brands. As Ulta.com continues to grow in terms of functionality and content, we expect it to become an even greater element in Ulta's marketing programs and a more important resource for our customers to access product and store information, beauty trends and techniques, and buy from a larger assortment of product offerings.

### **Merchandising**

#### ***Strategy***

We focus on offering one of the most extensive product and brand selections in our industry, including a broad assortment of branded and private label beauty products in cosmetics, fragrance, haircare, skincare, bath and body products and salon styling tools. A typical Ulta store carries over 20,000 prestige and mass beauty products. We present these products in an assisted self-service environment using centrally produced planograms (detailed schematics showing product placement in the store) and promotional merchandising planners. Our merchandising team continually monitors current fashion trends, historical sales trends and new product launches to keep Ulta's product assortment fresh and relevant to our customers. We believe our broad selection of merchandise, from moderate-priced brands to higher-end prestige brands, offers a unique shopping experience for our customers. The products we sell can also be found in department stores, specialty stores, salons, mass merchandisers and drug stores, but we offer all of these products in one retail format so that our customer can

find everything she needs in one stop. We believe we offer a compelling value proposition to our customers across all of our product categories. For example, we run frequent promotions and gift coupons for our mass brands, gift-with-purchase offers and multi-product gift sets for our prestige brands, and a comprehensive customer loyalty program.

We believe our private label products are a strategically important category for growth and profit contribution. Our objective is to provide quality, trend-right private label products to continue to strengthen our customers' perception of Ulta as a contemporary beauty destination. Ulta manages the full development cycle of these products from concept through production in order to deliver differentiated packaging and formulas to build brand image. Current Ulta cosmetics and bath brands have a strong following and we may expand our private label products into additional categories.

### ***Category mix***

We offer products in the following categories:

- Cosmetics, which includes products for the face, eyes, cheeks, lips and nails;
- Haircare, which includes shampoos, conditioners, styling products, and hair accessories;
- Salon styling tools, which includes hair dryers, curling irons and flat irons;
- Skincare and bath and body, which includes products for the face, hands and body;
- Fragrance for both men and women;
- Private label, consisting of Ulta branded cosmetics, skincare, bath and body products and haircare; and
- Other, including candles, home fragrance products and other miscellaneous health and beauty products.

### ***Organization***

Our merchandising team consists of a Senior Vice President of Merchandising overseeing a team of category Vice Presidents and their team of buyers. Our merchandising team works with our centralized merchandise planning and forecasting group to ensure a consistent execution across our store base and e-commerce platform.

Our planogram department assists the merchants and replenishment team to keep new products flowing into stores on a timely basis. All major product categories undergo planogram revisions on a regular basis and adjustments are made to assortment mix and product placement based on current sales trends.

Our visual department works with our merchandising team on strategic placement of promotional merchandise, along with functional and educational signage and creative product presentation standards, in all of our stores. All stores receive a centrally produced promotional planner to ensure consistent implementation of our marketing programs.

### ***Planning and allocation***

We have developed a disciplined approach to buying and a dynamic inventory planning and allocation process to support our merchandising strategy. We centrally manage product replenishment to our stores through our merchandise planning group. This group serves as a strategic partner to, and provides financial oversight of, the merchandising team. The merchandising team creates a sales forecast by category for the year. Our merchandise planning group creates an open-to-buy plan, approved by senior executives, for each product category. The open-to-buy plan is updated weekly with POS data, receipts and inventory levels and is used throughout the year to balance buying opportunities and inventory return on investment. We believe this structure maximizes our buying opportunities while maintaining organizational and financial control. Regularly replenished products are presented consistently in all stores utilizing a merchandising planogram process. POS data is used to calculate sales forecasts and to determine replenishment levels. We determine promotional product replenishment levels using sales histories from similar or comparable events. To ensure our inventory remains productive, our planning and replenishment group, along with senior executives, monitors the levels of clearance and aged inventory in our stores on a weekly basis.

## ***Vendor relationships***

We have close relationships with our over 300 vendors. There continues to be vendor consolidation within the beauty products industry. Our top ten vendors represent approximately 53% of our total annual sales. These include vendors across all product categories, such as Bare Minerals, Estee Lauder, L'Oréal, Procter & Gamble, and Coty, among others. We believe our vendors view us as a significant distribution channel for growth and brand enhancement.

## **Marketing and advertising**

### ***Marketing strategy***

We employ a multi-faceted marketing strategy to increase brand awareness, drive traffic to our stores and e-commerce website, acquire new customers, improve customer retention and increase frequency of shopping. We communicate with our customers and prospective customers through multiple vehicles. Our primary marketing expenditure is in direct mail catalogs and free-standing newspaper inserts which highlight the breadth of our selection of prestige, mass and salon beauty products, new products and services and special offers. We advertise in national beauty and lifestyle magazines and execute a comprehensive public relations strategy to enhance Ulta's reputation as a beauty destination, increase brand awareness, support our charitable efforts on behalf of The Breast Cancer Research Foundation and drive awareness of new products, in-store events and new store openings.

Our loyalty programs are an important tool to increase retention of existing customers and to enhance their loyalty to the Ulta brand. We currently operate two loyalty programs, ULTAmate Rewards and The Club at Ulta. Approximately 11 million active customers are enrolled in these loyalty programs, generating more than 50 percent of Ulta's sales. The Club at Ulta is a certificate program offering customers reward certificates for free beauty products based on their level of purchases. Customers earn reward certificates to redeem during specific promotional periods throughout the year. ULTAmate Rewards is a points-based program in which customers earn points based on their purchases. Points earned are valid for one year and may be redeemed on any product or select salon services. We expect to convert all loyalty program members to the ULTAmate Rewards program over time. Both loyalty programs provide us with rich customer data which continue to fuel our direct marketing programs, with the long term goal of driving higher share of our customers' spend in the beauty category. During 2012 we implemented the first phase of a new Customer Relationship Management solution to enable more sophisticated mining of this customer data in our loyalty member database as well as greater personalization of our marketing.

A growing percentage of our marketing expense is directed at our digital marketing strategy as a highly effective channel to communicate with existing customers and reach customers who are not familiar with Ulta or who haven't yet shopped with us. Our online marketing strategy includes search engine optimization, paid search, mobile advertising, affiliate relationships, social media, display advertising, and other digital marketing channels. Ulta's email marketing programs are effective in communicating with and driving sales from online and retail store customers.

## **Staffing and operations**

### ***Retail***

Our current Ulta store format is staffed with a general manager, a salon manager, three to four assistant managers, and approximately twenty full and part-time associates, including approximately six to eight prestige consultants and eight to ten licensed salon professionals. The management team in each store reports to the general manager. The general manager oversees all store activities including salon management, inventory management, merchandising, cash management, scheduling, hiring and guest services. Members of store management receive bonuses depending on their position and based upon various metrics. Each general manager reports to a district manager, who in turn reports to a Regional Vice President of Operations who in turn reports to the Senior Vice President of Operations who in turn reports to our Chief Executive Officer. Each store team receives additional support from time to time from recruiting specialists for the retail and salon operations, regionally based human resource managers, a field loss prevention team, salon technical trainers, management trainers and vendors.



Ulta stores are open seven days a week, eleven hours a day, Monday through Saturday, and seven hours on Sunday. Our stores have extended hours during the holiday season.

### ***Salon***

A typical salon is staffed with eight to ten licensed salon professionals, including a salon manager, six stylists, and one to two estheticians. Our higher producing salons have a guest coordinator and an assistant manager. Our salon technical trainers and vendor education classes create a comprehensive educational program for approximately 4,000 Ulta salon professionals.

### ***Training and development***

Our success is dependent in part on our ability to attract, train, retain and motivate qualified associates at all levels of the organization. We have developed a corporate culture that enables individual store managers to make store-level operating decisions and consistently rewards their success. We are committed to improving the skills and careers of our workforce and providing advancement opportunities for our associates. Our associates and management teams are essential to our store expansion strategy. We use a combination of existing managers, promoted associates and outside hires to support our new stores.

All of our associates participate in an interactive new-hire orientation through which each associate becomes acquainted with Ulta's purpose and values. Training for new store managers, prestige consultants and sales associates familiarizes them with our beauty products and sales, opening and closing routines, guest service expectations, our loss prevention policy and procedures, and our culture. We provide continuing education to salon professionals and retail associates throughout their careers at Ulta. Our learning management system allows us to provide ongoing training to all associates to continually enhance their product knowledge, technical skills and guest service expertise. In contrast to the sales teams at traditional department stores, our retail sales teams are not commissioned. Our prestige consultants are trained to work across all prestige lines and within our prestige "boutiques", where customers can receive makeup demonstrations and skin analysis.

### **Distribution**

We operate three distribution facilities. The first facility, located in Romeoville, Illinois, is approximately 317,000 square feet in size, including an overflow facility. The second distribution facility is in Phoenix, Arizona and is approximately 437,000 square feet in size. The third distribution center, located in Chambersburg, Pennsylvania, opened in April 2012 to support our future growth needs. The Chambersburg warehouse contains approximately 373,000 square feet.

Inventory is shipped from our suppliers to our distribution facilities. We carry over 20,000 products and replenish our stores with such products primarily in eases (i.e., less-than-case quantities), which allows us to ship less than an entire case when only one or two of a particular product is required. Our distribution facilities use warehouse management and warehouse control software systems, which have been upgraded or installed in the last three years. Store replenishment order selection is performed using pick-to-light processing technologies. Product is delivered to stores using a broad network of contract and local pool (final mile) carriers.

### **Information technology**

We are committed to using technology to enhance our competitive position. We depend on a variety of information systems and technologies to maintain and improve our competitive position and to manage the operations of our growing store base. We rely on computer systems to provide information for all areas of our business, including supply chain, merchandising, POS, e-commerce, finance, accounting and human resources. Our core business systems consist mostly of a purchased software program that integrates with our internally developed software solutions. Our technology also includes a company-wide network that connects all corporate users, stores, and our distribution infrastructure and provides communications for credit card and daily polling of sales and merchandise movement at the store level. We intend to leverage our technology infrastructure and systems where appropriate to gain operational efficiencies through more effective use of our systems, people and processes. We update the technology supporting our stores, distribution infrastructure and corporate headquarters



on a continual basis. We will continue to make investments in our information systems to facilitate our growth and enable us to enhance our competitive position.

### **Intellectual property**

We have registered over 30 trademarks in the United States and other countries. The majority of our trademark registrations contain the ULTA mark, including Ulta Salon Cosmetics Fragrance (and design), Ulta.com, and Ulta Beauty and two related designs. We maintain our marks on a docket system to monitor filing deadlines for renewal and continued validity. All marks that are deemed material to our business have been applied for or registered in the United States and select foreign countries, including Canada.

We believe our trademarks, especially those related to the Ulta brand, have significant value and are important to building brand recognition.

### **Government regulation**

In our U.S. markets, we are affected by extensive laws, governmental regulations, administrative determinations, court decisions and similar constraints. Such laws, regulations and other constraints may exist at the federal, state or local levels in the United States. The cosmetic, dietary supplement, food and over-the-counter (OTC) drug products we sell in our stores, including our Ulta branded products, are subject to regulation by the Food and Drug Administration (FDA), the Federal Trade Commission (FTC) and State Attorneys General (AG) in the United States. Such regulations principally relate to the safety of ingredients, proper labeling, manufacturing, advertising, packaging and distribution of the products.

Products classified as cosmetics (as defined in the Food, Drug and Cosmetic (FDC) Act) are not subject to pre-market approval by the FDA, but the products and the ingredients must generally be safe and must be properly manufactured and labeled. Certain products, such as sunscreens and acne treatments, are classified as OTC drugs, and certain ingestible products, such as vitamins and minerals, are classified as dietary supplements. Both OTC drugs and dietary supplements have specific ingredients, labeling and manufacturing requirements. The labeling of these products is subject to the requirements of the FDC Act and the Fair Packaging and Labeling Act. Further, claims we make in advertising, including claims about the safety or efficacy of products, pricing claims and environmental claims, are subject to regulation by the FTC and State AG's who generally prohibit deceptive practices.

The government regulations that most impact our day-to-day operations are the labor and employment and taxation laws to which most retailers are typically subject. We are also subject to typical zoning and real estate land use restrictions and typical advertising and consumer protection laws (both federal and state). Our salon business is subject to state board regulations and state licensing requirements for our stylists and our salon procedures.

In our store leases, we require our landlords to obtain all necessary zoning approvals and permits for the site to be used as a retail site and we also ask them to obtain any zoning approvals and permits for our specific use (but at times the responsibility for obtaining zoning approvals and permits for our specific use falls to us). We require our landlords to deliver a certificate of occupancy for any work they perform on our buildings or the shopping centers in which our stores are located. We are responsible for delivering a certificate of occupancy for any remodeling or build-outs that we perform and are responsible for complying with all applicable laws in connection with such construction projects or build-outs.

### **Associates**

As of February 2, 2013, we employed approximately 5,600 people on a full-time basis and approximately 10,500 on a part-time basis. We have no collective bargaining agreements. We have not experienced any work stoppages and believe we have good relationships with our associates.

### **Available Information**

Our principal website address is [www.ulta.com](http://www.ulta.com). We make available at this address under investor relations (at <http://ir.ulta.com>), free of charge, our proxy statement, annual report to shareholders, annual report on

Form 10-K, quarterly reports on Form 10-Q, current reports on Form 8-K, and all amendments to those reports as soon as reasonably practicable after such material is electronically filed with or furnished to the SEC. Information available on our website is not incorporated by reference in and is not deemed a part of this Form 10-K. In addition, our filings with the SEC may be accessed through the SEC's Electronic Data Gathering, Analysis and Retrieval (EDGAR) system at [www.sec.gov](http://www.sec.gov). You may read and copy any filed document at the SEC's public reference rooms in Washington, D.C. at 100 F Street, N.E., Washington, D.C. 20549. Please call the SEC at 1-800-SEC-0330 for further information about the public reference rooms. All statements made in any of our securities filings, including all forward-looking statements or information, are made as of the date of the document in which the statement is included, and we do not assume or undertake any obligation to update any of those statements or documents unless we are required to do so by law.

#### **Item 1A. Risk Factors**

*Investment in our common stock involves a high degree of risk and uncertainty. You should carefully consider the following risks and all of the other information contained in this Form 10-K before making an investment decision. If any of the following risks occur, our business, financial condition, results of operations or future growth could suffer. In these circumstances, the market price of our common stock could decline, and you may lose all or part of your investment.*

***The global economic crisis and volatility in global economic conditions and the financial markets as well as declines in consumer spending may adversely affect our business, financial condition, profitability, and cash flows.***

The global economic crisis and volatility and disruption to the capital and credit markets have had a significant, adverse impact on global economic conditions, resulting in recessionary pressures and declines in consumer confidence and economic growth. These conditions have led to decreases in consumer spending across the economy. Increases in the levels of unemployment, energy costs, healthcare costs and taxes, combined with tighter credit markets, reduced consumer confidence and other factors, contribute to the decline in consumer spending. While this decline has moderated, the level of consumer spending is not where it was prior to the global recession, and economic conditions could lead to further declines in consumer spending in the future. We offer a wide selection of beauty products and premium salon services. Continued uncertainty in the economy could adversely impact levels of consumer discretionary spending across all of our product categories including prestige beauty products and premium salon services. Additionally, there can be no assurance that various governmental activities to stabilize the markets and stimulate the economy will restore consumer confidence or change spending habits. Reduced consumer spending could cause changes in customer order patterns and changes in the level of inventory purchased by our customers, and may signify a reset of consumer spending habits, all of which may adversely affect our business, financial condition, profitability and cash flows.

Economic conditions have also resulted in a tightening of the credit markets, including lending by financial institutions, which is a source of capital for our borrowing and liquidity. This tightening of the credit markets has increased the cost of capital and reduced the availability of credit. Concern about the stability of the markets generally and the strength of counterparties specifically has led many lenders and institutional investors to reduce, and in some cases, cease to provide credit to businesses and consumers. These factors have led to a decrease in spending by businesses and consumers alike, and a corresponding decrease in global infrastructure spending. While global credit and financial markets appear to be recovering from extreme disruptions experienced over the past few years, uncertainty about continuing economic stability remains. It is difficult to predict how long the current economic and capital and credit market conditions will continue, the extent to which they will continue to recover, if at all, and which aspects of our products or business may be adversely affected. Current market and credit conditions could continue to make it more difficult for developers and landlords to obtain the necessary credit to build new retail centers. A significant decrease in new retail center development has adversely affected our new store program and could limit our future growth opportunities as long as the aforementioned conditions exist. Continued turbulence in the United States and international markets and economies and declines in consumer spending may adversely affect our ability to refinance maturing liabilities and access the capital markets to meet liquidity needs and could adversely affect our business, financial condition, profitability and cash flows.

Additionally, the general deterioration in economic conditions could adversely affect our commercial partners including our product vendors as well as the real estate developers and landlords who we rely on to construct and operate centers in which our stores are located. A bankruptcy or financial failure of a significant vendor or a number of significant real estate developers or shopping center landlords could have a material adverse effect on our business, financial condition, profitability, and cash flows.

***We may be unable to compete effectively in our highly competitive markets.***

The markets for beauty products and salon services are highly competitive with few barriers to entry even when economic conditions are favorable. We compete against a diverse group of retailers, both small and large, including regional and national department stores, specialty retailers, drug stores, mass merchandisers, high-end and discount salon chains, locally owned beauty retailers and salons, Internet businesses, catalog retailers and direct response television, including television home shopping retailers and infomercials. We believe the principal bases upon which we compete are the quality of merchandise, our value proposition, the quality of our customers' shopping experience and the convenience of our stores as one-stop destinations for beauty products and salon services. Many of our competitors are, and many of our potential competitors may be, larger and have greater financial, marketing and other resources and therefore may be able to adapt to changes in customer requirements more quickly, devote greater resources to the marketing and sale of their products, generate greater national brand recognition or adopt more aggressive pricing policies than we can. As a result, we may lose market share, which could have a material adverse effect on our business, financial condition, profitability and cash flows.

***If we are unable to gauge beauty trends and react to changing consumer preferences in a timely manner, our sales will decrease.***

We believe our success depends in substantial part on our ability to:

- recognize and define product and beauty trends;
- anticipate, gauge and react to changing consumer demands in a timely manner;
- translate market trends into appropriate, saleable product and service offerings in our stores and salons in advance of our competitors;
- develop and maintain vendor relationships that provide us access to the newest merchandise on reasonable terms; and
- distribute merchandise to our stores in an efficient and effective manner and maintain appropriate in-stock levels.

If we are unable to anticipate and fulfill the merchandise needs of the regions in which we operate, our net sales may decrease and we may be forced to increase markdowns of slow-moving merchandise, either of which could have a material adverse effect on our business, financial condition, profitability and cash flows.

***If we fail to retain our existing senior management team or attract qualified new personnel, such failure could have a material adverse effect on our business, financial condition, profitability and cash flows.***

Our business requires disciplined execution at all levels of our organization. This execution requires an experienced and talented management team. If we were to lose the benefit of the experience, efforts and abilities of other key executive personnel, it could have a material adverse effect on our business, financial condition, profitability and cash flows. Furthermore, our ability to manage our retail expansion will require us to continue to train, motivate and manage our associates. We will need to attract, motivate and retain additional qualified executive, managerial and merchandising personnel and store associates. Competition for this type of personnel is intense, and we may not be successful in attracting, assimilating and retaining the personnel required to grow and operate our business profitably.

Effective February 21, 2013, Carl S. Rubin resigned from his position as President and Chief Executive Officer and Dennis K. Eck, a current board member, is currently serving as Interim Chief Executive Officer until a

permanent replacement is identified. In addition, Scott M. Settersten served as Acting Chief Financial Officer and Assistant Secretary of the Company from October 18, 2012 through March 12, 2013 at which time we announced his appointment as permanent Chief Financial Officer and Assistant Secretary. We are in the process of completing a comprehensive search for a permanent Chief Executive Officer, however there can be no assurance that we will be able to identify and hire a qualified candidate in a timely manner. Our ability to attract, select and hire a permanent Chief Executive Officer candidate may prove difficult, take more time than anticipated, and be costly. This may require other senior management to divert part of their attention from their primary duties, which could have a material adverse effect on our business or operations. Our inability to effectively manage and maintain our business through this Chief Executive Officer transition could have a material adverse effect on our business, financial condition, profitability and cash flows.

***We intend to continue to open new stores, which could strain our resources and have a material adverse effect on our business, financial condition, profitability and cash flows.***

Our continued and future growth largely depends on our ability to successfully open and operate new stores on a profitable basis. During fiscal 2012, we opened 102 new stores. We intend to continue to grow our number of stores for the foreseeable future, and believe we have the long-term potential to grow our store base to approximately 1,200 stores in the United States. During fiscal 2012, the average investment required to open a typical new store was approximately \$1.0 million. This continued expansion could place increased demands on our financial, managerial, operational and administrative resources. For example, our planned expansion will require us to increase the number of people we employ as well as to monitor and upgrade our management information and other systems and our distribution infrastructure. These increased demands and operating complexities could cause us to operate our business less efficiently and could have a material adverse effect on our business, financial condition, profitability and cash flows.

***The capacity of our distribution and order fulfillment infrastructure may not be adequate to support our recent growth and expected future growth plans, which could prevent the successful implementation of these plans or cause us to incur costs to expand this infrastructure, which could have a material adverse effect on our business, financial condition, profitability and cash flows.***

We operate three distribution facilities, which house the distribution operations for Ulta retail stores together with the order fulfillment operations of our e-commerce business. In order to support our recent and expected future growth and to maintain the efficient operation of our business, additional distribution centers may need to be added in the future. Our failure to effectively upgrade and expand our distribution capacity on a timely basis to keep pace with our anticipated growth in stores could have a material adverse effect on our business, financial condition, profitability and cash flows.

***Any significant interruption in the operations of our distribution facilities could disrupt our ability to deliver merchandise to our stores in a timely manner, which could have a material adverse effect on our business, financial condition, profitability and cash flows.***

We distribute products to our stores without supplementing such deliveries with direct-to-store arrangements from vendors or wholesalers. We are a retailer carrying over 20,000 beauty products that change on a regular basis in response to beauty trends, which makes the success of our operations particularly vulnerable to disruptions in our distribution infrastructure. Any significant interruption in the operation of our supply chain infrastructure, such as disruptions in our information systems, disruptions in operations due to fire or other catastrophic events, labor disagreements, or shipping and transportation problems, could drastically reduce our ability to receive and process orders and provide products and services to our stores, which could have a material adverse effect on our business, financial condition, profitability and cash flows.

***Any material disruption of our information systems could negatively impact financial results and materially adversely affect our business operations, particularly during the holiday season.***

We are increasingly dependent on a variety of information systems to effectively manage the operations of our growing store base and fulfill customer orders from our e-commerce business. We have identified the need to

expand and upgrade our information systems to support recent and expected future growth. The failure of our information systems to perform as designed could have an adverse effect on our business and results of our operations. Any material disruption of our systems could disrupt our ability to track, record and analyze the merchandise that we sell and could negatively impact our operations, shipment of goods, ability to process financial information and credit card transactions, and our ability to receive and process e-commerce orders or engage in normal business activities. Moreover, security breaches or leaks of proprietary information, including leaks of customers' private data, could result in liability, decrease customer confidence in our company, and weaken our ability to compete in the marketplace, which could have a material adverse effect on our business, financial condition, profitability and cash flows.

Our e-commerce operations are increasingly important to our business. The Ulta.com website serves as an effective extension of Ulta's marketing and prospecting strategies (beyond catalogs, newspaper inserts and national advertising) by exposing potential new customers to the Ulta brand, product offerings, and enhanced content. As the importance of our website and e-commerce operations to our business grows, we are increasingly vulnerable to website downtime and other technical failures. Our failure to successfully respond to these risks could reduce e-commerce sales and damage our brand's reputation.

***We are subject to risks relating to our information technology systems, and any failure to adequately protect our critical information technology systems could materially affect our operations.***

We rely on information technology systems across our operations, including for management, supply chain and financial information and various other processes and transactions. Our ability to effectively manage our business depends on the security, reliability and capacity of these systems. Information technology system failures, network disruptions or breaches of security could disrupt our operations, causing delays or cancellation of customer orders or impeding the manufacture or shipment of products, processing of transactions or reporting of financial results. An attack or other problem with our systems could also result in the disclosure of proprietary information about our business or confidential information concerning our customers or employees, which could result in significant damage to our business and our reputation.

***Unauthorized disclosure of confidential customer, associate or company information could damage our reputation, expose us to litigation and negatively impact our business.***

We collect, process and retain sensitive and confidential customer and associate information as part of our normal course of business. We rely on commercially available systems, software, tools and monitoring to provide security for processing, transmission and storage of confidential information. Despite the security measures we have in place, our systems, and those of our third party service providers, may be vulnerable to security breaches, acts of vandalism, computer viruses, misplaced or lost data, human errors, or other similar events. Any security breach of customer, associate or company confidential information could result in damage to our reputation and result in lost sales, litigation, fines, or additional investments to fix or replace the systems that were breached. Any of these events could have a material adverse effect on our business, financial condition, profitability and cash flows.

***Increased costs or interruption in our third-party vendors' overseas sourcing operations could disrupt production, shipment or receipt of some of our merchandise, which would result in lost sales and could increase our costs.***

We directly source the majority of our gift-with-purchase and other promotional products through third-party vendors using foreign factories. In addition, many of our vendors use overseas sourcing to varying degrees to manufacture some or all of their products. Any event causing a sudden disruption of manufacturing or imports from such foreign countries, including the imposition of additional import restrictions, unanticipated political changes, increased customs duties, legal or economic restrictions on overseas suppliers' ability to produce and deliver products, and natural disasters, could materially harm our operations. We have no long-term supply contracts with respect to such foreign-sourced items, many of which are subject to existing or potential duties, tariffs or quotas that may limit the quantity of certain types of goods that may be imported into the United States from such countries. Our business is also subject to a variety of other risks generally associated with sourcing



goods from abroad, such as political instability, disruption of imports by labor disputes and local business practices. Our sourcing operations may also be hurt by health concerns regarding infectious diseases in countries in which our merchandise is produced, adverse weather conditions or natural disasters that may occur overseas or acts of war or terrorism in the United States or worldwide, to the extent these acts affect the production, shipment or receipt of merchandise. Our future operations and performance will be subject to these factors, which are beyond our control, and these factors could have a material adverse effect on our business, financial condition, profitability and cash flows or may require us to modify our current business practices and incur increased costs.

***A reduction in traffic to, or the closing of, the other destination retailers in the shopping areas where our stores are located could significantly reduce our sales and leave us with unsold inventory, which could have a material adverse effect on our business, financial condition, profitability and cash flows.***

As a result of our real estate strategy, most of our stores are located in off-mall shopping areas known as power centers. Power centers typically contain three to five big-box anchor stores along with a variety of smaller specialty tenants. As a consequence of most of our stores being located in such shopping areas, our sales are derived, in part, from the volume of traffic generated by the other destination retailers and the anchor stores in power centers where our stores are located. Customer traffic to these shopping areas may be adversely affected by the closing of such destination retailers or anchor stores, or by a reduction in traffic to such stores resulting from a regional economic downturn, a general downturn in the local area where our store is located, or a decline in the desirability of the shopping environment of a particular power center. Such a reduction in customer traffic would reduce our sales and leave us with excess inventory, which could have a material adverse effect on our business, financial condition and results of operations. We may respond by increasing markdowns or initiating marketing promotions to reduce excess inventory, which would further decrease our gross profits and net income. This risk is more pronounced during the current economic downturn which has resulted in a number of national retailers filing for bankruptcy or closing stores due to depressed consumer spending levels.

***Diversion of exclusive salon products, or a decision by manufacturers of exclusive salon products to utilize other distribution channels, could negatively impact our revenue from the sale of such products, which could have a material adverse effect on our business, financial condition, profitability and cash flows.***

The retail products that we sell in our salons are meant to be sold exclusively by professional salons and authorized professional retail outlets. However, incidents of product diversion occur, which involve the selling of salon exclusive haircare products to unauthorized channels such as drug stores, grocery stores or mass merchandisers. Diversion could result in adverse publicity that harms the commercial prospects of our products (if diverted products are old, tainted or damaged), as well as lower product revenues should consumers choose to purchase diverted product from these channels rather than purchasing from one of our salons. Additionally, the various product manufacturers could in the future decide to utilize other distribution channels for such products, therefore widening the availability of these products in other retail channels, which could negatively impact the revenue we earn from the sale of such products.

***We rely on our good relationships with vendors to purchase prestige, mass and salon beauty products on reasonable terms. If these relationships were to be impaired, or if certain vendors were to change their distribution model or are unable to supply sufficient merchandise to keep pace with our growth plans, we may not be able to obtain a sufficient selection or volume of merchandise on reasonable terms, and we may not be able to respond promptly to changing trends in beauty products, either of which could have a material adverse effect on our competitive position, business, financial condition, profitability and cash flows.***

We have no long-term supply agreements or exclusive arrangements with vendors and, therefore, our success depends on maintaining good relationships with our vendors. Our business depends to a significant extent on the willingness and ability of our vendors to supply us with a sufficient selection and volume of products to stock our stores. Some of our prestige vendors may not have the capacity to supply us with sufficient merchandise to keep pace with our growth plans. We also have strategic partnerships with certain core brands, which have allowed us to benefit from the growing popularity of such brands. Any of our other core brands could in the future decide to scale back or end its partnership with us and strengthen its relationship with our competitors, which could



negatively impact the revenue we earn from the sale of such products. If we fail to maintain strong relationships with our existing vendors, or fail to continue acquiring and strengthening relationships with additional vendors of beauty products, our ability to obtain a sufficient amount and variety of merchandise on reasonable terms may be limited, which could have a negative impact on our competitive position.

During fiscal 2012, merchandise supplied to Ulta by our top ten vendors accounted for approximately 53% of our net sales. There continues to be vendor consolidation within the beauty products industry. The loss of or a reduction in the amount of merchandise made available to us by any one of these key vendors, or by any of our other vendors, could have an adverse effect on our business, financial condition, profitability and cash flows.

***If we are unable to protect our intellectual property rights, our brand and reputation could be harmed, which could have a material adverse effect on our business, financial condition, profitability and cash flows.***

We regard our trademarks, trade dress, copyrights, trade secrets, know-how and similar intellectual property as critical to our success. Our principal intellectual property rights include registered and common law trademarks on our name, "Ulta," and other marks incorporating that name, copyrights in our website content, rights to our domain name www.ulta.com and trade secrets and know-how with respect to our Ulta branded product formulations, product sourcing, sales and marketing and other aspects of our business. As such, we rely on trademark and copyright law, trade secret protection and confidentiality agreements with certain of our employees, consultants, suppliers and others to protect our proprietary rights. If we are unable to protect or preserve the value of our trademarks, copyrights, trade secrets or other proprietary rights for any reason, or if other parties infringe on our intellectual property rights, our brand and reputation could be impaired and we could lose customers.

***If our manufacturers are unable to produce products manufactured uniquely for Ulta, including Ulta branded products and gift-with-purchase and other promotional products, consistent with applicable regulatory requirements, we could suffer lost sales and be required to take costly corrective action, which could have a material adverse effect on our business, financial condition, profitability and cash flows.***

We do not own or operate any manufacturing facilities and therefore depend upon independent third-party vendors for the manufacture of all products manufactured uniquely for Ulta, including Ulta branded products and gift-with-purchase and other promotional products. Our third-party manufacturers of Ulta products may not maintain adequate controls with respect to product specifications and quality and may not continue to produce products that are consistent with applicable regulatory requirements. If we or our third-party manufacturers fail to comply with applicable regulatory requirements, we could be required to take costly corrective action. In addition, sanctions under various laws may include seizure of products, injunctions against future shipment of products, restitution and disgorgement of profits, operating restrictions and criminal prosecution. The FDA does not have a pre-market approval system for cosmetics, and we believe we are permitted to market our cosmetics and have them manufactured without submitting safety or efficacy data to the FDA. However, cosmetic products may become subject to more extensive regulation in the future. These events could interrupt the marketing and sale of our Ulta products, severely damage our brand reputation and image in the marketplace, increase the cost of our products, cause us to fail to meet customer expectations or cause us to be unable to deliver merchandise in sufficient quantities or of sufficient quality to our stores, any of which could result in lost sales, which could have a material adverse effect on our business, financial condition, profitability and cash flows.

***We, as well as our vendors, are subject to laws and regulations that could require us to modify our current business practices and incur increased costs, which could have a material adverse effect on our business, financial condition, profitability and cash flows.***

In our U.S. markets, numerous laws and regulations at the federal, state and local levels can affect our business. Legal requirements are frequently changed and subject to interpretation, and we are unable to predict the ultimate cost of compliance with these requirements or their effect on our operations. If we fail to comply with any present or future laws or regulations, we could be subject to future liabilities, a prohibition on the operation of our stores or a prohibition on the sale of our Ulta branded products. In particular, failure to adequately comply

with the following legal requirements could have a material adverse effect on our business, financial conditions, profitability and cash flows:

- In March 2010, comprehensive healthcare reform legislation under the Patient Protection and Affordable Care Act and the Health Care Education and Affordability Reconciliation Act (collectively, the “Acts”) was passed and signed into law. This healthcare reform legislation significantly expands healthcare coverage to many uninsured individuals and to those already insured. Due to the breadth and complexity of the healthcare reform legislation and the staggered implementation and uncertain timing of the regulations and lack of interpretive guidance, it is difficult to predict the overall impact of the healthcare reform legislation on our business over the coming years. Possible adverse effects include increased costs, exposure to expanded liability and requirements for us to revise the ways in which we conduct business. Additionally, because significant provisions of the Acts will become effective on various dates over the next several years, future changes could significantly impact any effects on our business that we previously anticipated.
- Our rapidly expanding workforce, growing in pace with our number of stores, makes us vulnerable to changes in labor and employment laws. In addition, changes in federal and state minimum wage laws and other laws relating to employee benefits could cause us to incur additional wage and benefits costs, which could hurt our profitability and affect our growth strategy.
- Our salon business is subject to state board regulations and state licensing requirements for our stylists and our salon procedures. Failure to maintain compliance with these regulatory and licensing requirements could jeopardize the viability of our salons.
- We operate stores in California, which has enacted legislation commonly referred to as “Proposition 65” requiring that “clear and reasonable” warnings be given to consumers who are exposed to chemicals known to the State of California to cause cancer or reproductive toxicity. Although we have sought to comply with Proposition 65 requirements, there can be no assurance that we will not be adversely affected by litigation relating to Proposition 65.

In addition, the formulation, manufacturing, packaging, labeling, distribution, sale and storage of our vendors’ products and our Ulta products are subject to extensive regulation by various federal agencies, including the FDA, the FTC and state attorneys general in the United States. If we, our vendors or the manufacturers of our Ulta products fail to comply with those regulations, we could become subject to significant penalties or claims, which could harm our results of operations or our ability to conduct our business. In addition, the adoption of new regulations or changes in the interpretations of existing regulations may result in significant compliance costs or discontinuation of product sales and may impair the marketability of our vendors’ products or our Ulta products, resulting in significant loss of net sales. Our failure to comply with FTC or state regulations that cover our vendors’ products or our Ulta product claims and advertising, including direct claims and advertising by us, may result in enforcement actions and imposition of penalties or otherwise harm the distribution and sale of our products.

***As we grow the number of our stores in new cities and states, we are subject to local building codes in an increasing number of local jurisdictions. Our failure to comply with local building codes, and the failure of our landlords to obtain certificates of occupancy in a timely manner, could cause delays in our new store openings, which could increase our store opening costs, cause us to incur lost sales and profits, and damage our public reputation.***

Ensuring compliance with local zoning and real estate land use restrictions across numerous jurisdictions is increasingly challenging as we grow the number of our stores in new cities and states. Our store leases generally require us to provide a certificate of occupancy with respect to the interior build-out of our stores (landlords generally provide the certificate of occupancy with respect to the shell of the store and the larger shopping area and common areas), and while we strive to remain in compliance with local building codes relating to the interior buildout of our stores, the constantly increasing number of local jurisdictions in which we operate makes it increasingly difficult to stay abreast of changes in, and requirements of, local building codes and local building and fire inspectors’ interpretations of such building codes. Moreover, our landlords have occasionally been unable, due to the requirements of local zoning laws, to obtain in a timely manner a certificate of occupancy with respect to the

shell of our stores and/or the larger shopping centers and/or common areas (which certificate of occupancy is required by local building codes for us to open our store), causing us in some instances to delay store openings. As the number of local building codes and local building and fire inspectors to which we and our landlords are subject to increases, we may be increasingly vulnerable to increased construction costs and delays in store openings caused by our or our landlords' compliance with local building codes and local building and fire inspectors' interpretations of such building codes, which increased construction costs and/or delays in store openings could increase our store opening costs, cause us to incur lost sales and profits, and damage our public reputation and could have a material adverse effect on our business, financial condition, profitability and cash flows.

***Our Ulta products and salon services may cause unexpected and undesirable side effects that could result in their discontinuance or expose us to lawsuits, either of which could result in unexpected costs and damage to our reputation, which could have a material adverse effect on our business, financial condition, profitability and cash flows.***

Unexpected and undesirable side effects caused by our Ulta products for which we have not provided sufficient label warnings, or salon services which may have been performed negligently, could result in the discontinuance of sales of our products or of certain salon services or prevent us from achieving or maintaining market acceptance of the affected products and services. Such side effects could also expose us to product liability or negligence lawsuits. Any claims brought against us may exceed our existing or future insurance policy coverage or limits. Any judgment against us that is in excess of our policy limits would have to be paid from our cash reserves, which would reduce our capital resources. Further, we may not have sufficient capital resources to pay a judgment, in which case our creditors could levy against our assets. These events could cause negative publicity regarding our company, brand or products, which could in turn harm our reputation and net sales, which could have a material adverse effect on our business, financial condition, profitability and cash flows.

***Legal proceedings or third-party claims of intellectual property infringement may require us to spend time and money and could prevent us from developing certain aspects of our business operations, which could have a material adverse effect on our business, financial condition, profitability and cash flows.***

Our technologies, promotional products purchased from third-party vendors, or Ulta products or potential products in development may infringe rights under patents, patent applications, trademark, copyright or other intellectual property rights of third parties in the United States and abroad. These third parties could bring claims against us that would cause us to incur substantial expenses and, if successful, could cause us to pay substantial damages. Further, if a third party were to bring an intellectual property infringement suit against us, we could be forced to stop or delay development, manufacturing, or sales of the product that is the subject of the suit.

As a result of intellectual property infringement claims, or to avoid potential claims, we may choose to seek, or be required to seek, a license from the third party and would most likely be required to pay license fees or royalties or both. These licenses may not be available on acceptable terms, or at all. Ultimately, we could be prevented from commercializing a product or be forced to cease some aspect of our business operations if, as a result of actual or threatened intellectual property infringement claims, we are unable to enter into licenses on acceptable terms. Even if we were able to obtain a license, the rights may be nonexclusive, which would give our competitors access to the same intellectual property. The inability to enter into licenses could harm our business significantly.

In addition to infringement claims against us, we may become a party to other patent or trademark litigation and other proceedings, including interference proceedings declared by the United States Patent and Trademark Office (USPTO) proceedings before the USPTO's Trademark Trial and Appeal Board and opposition proceedings in the European Patent Office, regarding intellectual property rights with respect to products purchased from third-party vendors or our Ulta branded products and technology. Some of our competitors may be able to sustain the costs of such litigation or proceedings better than us because of their substantially greater financial resources. Uncertainties resulting from the initiation and continuation of intellectual property litigation or other proceedings could impair our ability to compete in the marketplace. Intellectual property litigation and other proceedings may also absorb significant management time and resources, which could have a material adverse effect on our business, financial condition, profitability and cash flows.

***Increases in the demand for, or the price of, raw materials used to build and remodel our stores could hurt our profitability.***

The raw materials used to build and remodel our stores are subject to availability constraints and price volatility caused by weather, supply conditions, government regulations, general economic conditions and other unpredictable factors. As a retailer engaged in an active building and remodeling program, we are particularly vulnerable to increases in construction and remodeling costs. As a result, increases in the demand for, or the price of, raw materials could have a material adverse effect on our business, financial condition, profitability and cash flows.

***Increases in costs of mailing, paper and printing will affect the cost of our catalog and promotional mailings, which will reduce our profitability.***

Postal rate increases and paper and printing costs affect the cost of our catalog and promotional mailings. In response to any future increases in mailing costs, we may consider reducing the number and size of certain catalog editions. In addition, we rely on discounts from the basic postal rate structure, such as discounts for bulk mailings and sorting by zip code and carrier routes. We are not a party to any long-term contracts for the supply of paper. The cost of paper fluctuates significantly, and our future paper costs are subject to supply and demand forces that we cannot control. Future additional increases in postal rates or in paper or printing costs could have a material adverse effect on our business, financial condition, profitability and cash flows.

***Our secured revolving credit facility contains certain restrictive covenants that could limit our operational flexibility, including our ability to open stores.***

We have a \$200 million secured revolving credit facility with a term expiring October 2016. Substantially all of our assets are pledged as collateral for outstanding borrowings under the agreement. Outstanding borrowings bear interest at the prime rate or Libor plus 1.50% and the unused line fee is 0.225%. The credit facility agreement contains usual and customary restrictive covenants relating to our management and the operation of our business. These covenants, among other things, limit our ability to grant liens on our assets, incur additional indebtedness, pay cash dividends and redeem our stock, enter into transactions with affiliates and merge or consolidate with another entity. These covenants could restrict our operational flexibility and any failure to comply with these covenants or our payment obligations would limit our ability to borrow under the credit facility and, in certain circumstances, may allow the lenders thereunder to require repayment.

***We may need to raise additional funds to pursue our growth strategy, and we may be unable to raise capital when needed, which could have a material adverse effect on our business, financial condition, profitability and cash flows.***

From time to time we may seek additional equity or debt financing to provide for capital expenditures and working capital consistent with our growth strategy. In addition, if general economic, financial or political conditions in our markets change, or if other circumstances arise that have a material effect on our cash flow, the anticipated cash needs of our business as well as our belief as to the adequacy of our available sources of capital could change significantly. Any of these events or circumstances could result in significant additional funding needs, requiring us to raise additional capital to meet those needs. If financing is not available on satisfactory terms or at all, we may be unable to execute our growth strategy as planned and our results of operations may suffer.

***Failure to maintain adequate financial and management processes and controls could lead to errors in our financial reporting and could harm our ability to manage our expenses.***

Reporting obligations as a public company and our anticipated growth are likely to place a considerable strain on our financial and management systems, processes and controls, as well as on our personnel. In addition, as a public company we are required to document and test our internal controls over financial reporting pursuant to Section 404 of the Sarbanes-Oxley Act of 2002 so that our management can periodically certify as to the effectiveness of our internal controls over financial reporting. As a result, we have been required to improve our

financial and managerial controls, reporting systems and procedures and have incurred and will continue to incur expenses to test our systems and to make such improvements. If our management is unable to certify the effectiveness of our internal controls or if our independent registered public accounting firm cannot render an opinion on the effectiveness of our internal control over financial reporting, or if material weaknesses in our internal controls are identified, we could be subject to regulatory scrutiny and a loss of public confidence, which could have a material adverse effect on our business and our stock price. In addition, if we do not maintain adequate financial and management personnel, processes and controls, we may not be able to accurately report our financial performance on a timely basis, which could cause a decline in our stock price and adversely affect our ability to raise capital.

***The market price for our common stock may be volatile, and an investor may not be able to sell our stock at a favorable price or at all.***

The market price of our common stock is likely to fluctuate significantly from time to time in response to factors including:

- differences between our actual financial and operating results and those expected by investors;
- fluctuations in quarterly operating results;
- our performance during peak retail seasons such as the holiday season;
- market conditions in our industry and the economy as a whole;
- changes in the estimates of our operating performance or changes in recommendations by any research analysts that follow our stock or any failure to meet the estimates made by research analysts;
- investors' perceptions of our prospects and the prospects of the beauty products and salon services industries;
- the performance of our key vendors;
- announcements by us, our vendors or our competitors of significant acquisitions, divestitures, strategic partnerships, joint ventures or capital commitments;
- introductions of new products or new pricing policies by us or by our competitors;
- stock transactions by our principal stockholders;
- recruitment or departure of key personnel; and
- the level and quality of securities research analyst coverage for our common stock.

In addition, public announcements by our competitors, other retailers and vendors concerning, among other things, their performance, strategy, or accounting practices could cause the market price of our common stock to decline regardless of our actual operating performance.

***Our comparable store sales and quarterly financial performance may fluctuate for a variety of reasons, which could result in a decline in the price of our common stock.***

Our comparable store sales and quarterly results of operations have fluctuated in the past, and we expect them to continue to fluctuate in the future. A variety of other factors affect our comparable store sales and quarterly financial performance, including:

- general U.S. economic conditions and, in particular, the retail sales environment;
- changes in our merchandising strategy or mix;
- performance of our new and remodeled stores;
- the effectiveness of our inventory management;
- timing and concentration of new store openings, including additional human resource requirements and related pre-opening and other start-up costs;



- cannibalization of existing store sales by new store openings;
- levels of pre-opening expenses associated with new stores;
- timing and effectiveness of our marketing activities, such as catalogs and newspaper inserts;
- seasonal fluctuations due to weather conditions; and
- actions by our existing or new competitors.

Accordingly, our results for any one fiscal quarter are not necessarily indicative of the results to be expected for any other quarter, and comparable store sales for any particular future period may decrease. In that event, the price of our common stock would likely decline. For more information on our quarterly results of operations, see Item 7, “Management’s Discussion and Analysis of Financial Condition and Results of Operations.”

***Anti-takeover provisions in our organizational documents, stockholder rights agreement and Delaware law may discourage or prevent a change in control, even if a sale of the Company would be beneficial to our stockholders, which could cause our stock price to decline and prevent attempts by our stockholders to replace or remove our current management.***

Our amended and restated certificate of incorporation and by-laws contain provisions that may delay or prevent a change in control, discourage bids at a premium over the market price of our common stock and harm the market price of our common stock and diminish the voting and other rights of the holders of our common stock. These provisions include:

- dividing our board of directors into three classes serving staggered three-year terms;
- authorizing our board of directors to issue preferred stock and additional shares of our common stock without stockholder approval;
- prohibiting stockholder actions by written consent;
- prohibiting our stockholders from calling a special meeting of stockholders;
- prohibiting our stockholders from making certain changes to our amended and restated certificate of incorporation or amended and restated bylaws except with a two-thirds majority stockholder approval; and
- requiring advance notice for raising business matters or nominating directors at stockholders’ meetings.

As permitted by our amended and restated certificate of incorporation and by-laws, we have a stockholder rights agreement, sometimes known as a “poison pill,” which provides for the issuance of a new series of preferred stock to holders of common stock. In the event of a takeover attempt, this preferred stock gives rights to holders of common stock other than the acquirer to buy additional shares of common stock at a discount, leading to the dilution of the acquirer’s stake.

We are also subject to provisions of Delaware law that, in general, prohibit any business combination with a beneficial owner of 15% or more of our common stock for three years after the stockholder becomes a 15% stockholder, subject to specified exceptions. Together, these provisions of our certificate of incorporation, by-laws and stockholder rights agreement and of Delaware law could make the removal of management more difficult and may discourage transactions that otherwise could involve payment of a premium over prevailing market prices for our common stock.

***There can be no assurance that we will declare dividends in the future.***

We paid a special cash dividend on May 15, 2012. Any future dividend payments will be within the discretion of our Board of Directors and will depend on, among other things, our financial condition, results of operations, capital requirements, capital expenditure requirements, contractual restrictions, anticipated cash needs, provisions of applicable law and other factors that our board of directors may deem relevant. We may not have sufficient liquidity in the future to pay dividends on our common stock.



*Our previously announced stock repurchase program could affect the price of our common stock and increase volatility and may be suspended or terminated at any time, which may result in a decrease in the trading price of our common stock.*

On March 18, 2013, we announced that our Board of Directors had approved a stock repurchase program. Under the program, we are authorized to repurchase shares of our common stock from time to time in the open market, in privately negotiated transactions, or otherwise, at prices that the Company deems appropriate and subject to market conditions, applicable law and other factors deemed relevant in the Company's sole discretion, up to an aggregate purchase price of \$150 million. The timing and actual number of shares repurchased depend on a variety of factors including the timing of open trading windows, price, corporate and regulatory requirements, and other market conditions. The program does not obligate the Company to repurchase any dollar amount or number of shares of common stock, and may be suspended or discontinued at any time and any suspension or discontinuation could cause the market price of our stock to decline. Repurchases pursuant to our stock repurchase program could affect our stock price and increase its volatility. The existence of a stock repurchase program could also cause our stock price to be higher than it would be in the absence of such a program and could potentially reduce the market liquidity for our stock. There can be no assurance that any stock repurchases will enhance stockholder value because the market price of our common stock may decline below the levels at which we repurchased shares of common stock. Although our stock repurchase program is intended to enhance long-term stockholder value, short-term stock price fluctuations could reduce the program's effectiveness.

**Item 1B. *Unresolved Staff Comments***

None.

**Item 2. Properties**

All of our retail stores, corporate offices and distribution and warehouse facilities are leased or subleased. Our retail stores are predominately located in convenient, high-traffic, locations such as power centers. Our typical store is approximately 10,000 square feet, including approximately 950 square feet dedicated to our full-service salon. Most of our retail store leases provide for a fixed minimum annual rent and generally have a 10-year initial term with options for two or three extension periods of five years each, exercisable at our option. As of February 2, 2013, we operated 550 retail stores in 45 states, as shown in the table below:

<u>State</u>	<u>Number of stores</u>
Alabama .....	10
Arizona .....	23
Arkansas .....	4
California .....	55
Colorado .....	12
Connecticut .....	5
Delaware .....	1
Florida .....	39
Georgia .....	21
Idaho .....	3
Illinois .....	38
Indiana .....	10
Iowa .....	6
Kansas .....	3
Kentucky .....	6
Louisiana .....	9
Maine .....	3
Maryland .....	9
Massachusetts .....	7
Michigan .....	23
Minnesota .....	11
Mississippi .....	4
Missouri .....	9
Montana .....	1
Nebraska .....	3
Nevada .....	6
New Hampshire .....	2
New Jersey .....	14
New Mexico .....	1
New York .....	19
North Carolina .....	17
North Dakota .....	1
Ohio .....	18
Oklahoma .....	8
Oregon .....	6
Pennsylvania .....	20
Rhode Island .....	1
South Carolina .....	10
Tennessee .....	8
Texas .....	67
Utah .....	6
Virginia .....	14
Washington .....	9
West Virginia .....	1
Wisconsin .....	7
<b>Total</b> .....	<b>550</b>

As of February 2, 2013, we operated three distribution facilities located in Romeoville, Illinois, Phoenix, Arizona and Chambersburg, Pennsylvania. The Romeoville warehouse contains approximately 317,000 square feet, including an overflow facility. The lease for the Romeoville warehouse expires on April 30, 2015. The Phoenix warehouse contains approximately 437,000 square feet. The lease for the Phoenix warehouse expires on March 31, 2019 and has three renewal options with terms of five years each. The Chambersburg warehouse contains approximately 373,000 square feet. The lease expires on March 31, 2027 and has three renewal options with terms of five years each.

Our principal executive office is in Bolingbrook, Illinois. The lease for the Bolingbrook office expires on August 31, 2018.

**Item 3. Legal Proceedings**

*General litigation* — On March 2, 2012, a putative employment class action lawsuit was filed against us and certain unnamed defendants in state court in Los Angeles County, California. On April 12, 2012, the Company removed the case to the United States District Court for the Central District of California. The plaintiff and members of the proposed class are alleged to be (or to have been) non-exempt hourly employees. The suit alleges that Ulta violated various provisions of the California labor laws and failed to provide plaintiff and members of the proposed class with full meal periods, paid rest breaks, certain wages, overtime compensation and premium pay. The suit seeks to recover damages and penalties as a result of these alleged practices. The Company denies plaintiff’s allegations and is vigorously defending the matter.

We are also involved in various legal proceedings that are incidental to the conduct of our business. In the opinion of management, the amount of any liability with respect to these proceedings, either individually or in the aggregate, will not be material.

**Item 4. Mine Safety Disclosures**

None.

**EXECUTIVE OFFICERS OF THE REGISTRANT**

The names of our executive officers, their ages and their positions are shown below. On February 14, 2013, the Company announced the resignation of Carl S. Rubin as President, Chief Executive Officer and Director and the appointment of Dennis K. Eck as our Interim Chief Executive Officer.

<u>Name</u>	<u>Age</u>	<u>Position</u>
Dennis K. Eck . . . . .	69	Interim Chief Executive Officer and Chairman of the Board of Directors
Carl S. Rubin . . . . .	53	Former President, Chief Executive Officer and Director
Scott M. Settersten . . . . .	52	Chief Financial Officer and Assistant Secretary
Robert S. Guttman . . . . .	60	Senior Vice President, General Counsel & Secretary

There is no family relationship between any of the Directors or executive officers and any other Director or executive officer of Ulta.

*Dennis K. Eck.* Mr. Eck was named Interim Chief Executive Officer on February 21, 2013 and has served as Chairman of the Board of Directors and a director of Ulta since 2003. Prior to that, Mr. Eck served in various executive roles with Coles Myer, one of Australia’s largest retailers, from 1994 to 2001 where he was Chief Executive Officer and a member of the board of Coles Myer LTD Australia from November 1997 to September 2001. Prior to 1994, Mr. Eck served in various executive roles with Vons Companies, Inc. and American Stores, Inc.

*Carl S. Rubin.* Mr. Rubin was our Chief Executive Officer from September 2010 to February 2013. Prior to joining Ulta, Mr. Rubin was President of the North American Retail division of Office Depot Inc. from January 2006 to April 2010. Mr. Rubin first joined Office Depot as Executive Vice President, Chief Marketing Officer

and Chief Merchandising Officer in 2004. From 1998 to 2004, Mr. Rubin served at Accenture, including three years as a partner, working with a range of retail clients across department store, specialty store and e-commerce venues. Prior to 1998, Mr. Rubin held a number of senior merchandising and general management positions in the specialty retail and department store industry including Federated Department Stores. Mr. Rubin was a member of the executive committee of the board of directors of the National Retail Federation from January 2007 through March 2010.

*Scott M. Settersten.* Mr. Settersten was named Chief Financial Officer and Assistant Secretary on March 12, 2013 after having previously served as Acting Chief Financial Officer and Assistant Secretary since October 18, 2012. Prior to this role, Mr. Settersten served as Vice President of Accounting since 2010 and was responsible for accounting, tax, external reporting and investor relations. He joined Ulta Beauty in January 2005 as a Director of Financial Reporting. Prior to joining Ulta Beauty, Mr. Settersten spent 15 years with Pricewaterhouse Coopers LLP as a certified public accountant serving in various senior manager roles in the assurance and risk management practices.

*Robert S. Guttman.* Mr. Guttman has been our Senior Vice President, General Counsel & Secretary since August 2007. Prior to joining Ulta, Mr. Guttman was Vice President, General Counsel and Secretary of The Reynolds and Reynolds Company from August 2005 to October 2006. From 2000 to 2005, Mr. Guttman served as Senior Vice President, General Counsel and Secretary of CCC Information Services, Inc. Prior to that time, Mr. Guttman was an Associate General Counsel with Sears, Roebuck and Co., having served in various positions as a lawyer with Sears from 1986 to 2000.

## Part II

### **Item 5. *Market for Registrant’s Common Equity, Related Stockholder Matters and Issuer Purchases of Equity Securities***

#### **Market Information**

Our common stock has traded on the NASDAQ Global Select Market under the symbol “Ulta” since October 25, 2007. Our initial public offering was priced at \$18.00 per share. The following table sets forth the high and low sales prices for our common stock on the NASDAQ Global Select Market during fiscal years 2012 and 2011:

<u>Fiscal Year 2012</u>	<u>High</u>	<u>Low</u>
First quarter . . . . .	\$95.56	\$76.15
Second quarter . . . . .	97.70	83.78
Third quarter . . . . .	101.54	83.74
Fourth quarter . . . . .	101.99	86.93
<u>Fiscal Year 2011</u>	<u>High</u>	<u>Low</u>
First quarter . . . . .	\$53.19	\$36.73
Second quarter . . . . .	68.70	49.61
Third quarter . . . . .	72.86	48.89
Fourth quarter . . . . .	78.80	64.09

#### ***Holder of the Registrant’s Common Stock***

The last reported sale price of our common stock on the NASDAQ Global Select Market on March 28, 2013 was \$81.17 per share. As of March 28, 2013, we had 77 holders of record of our common stock. Because many shares of common stock are held by brokers and other institutions on behalf of stockholders, we are unable to estimate the total number of stockholders represented by these record holders.

### ***Dividends***

On March 8, 2012, we announced that our Board of Directors had declared a \$1.00 per share special cash dividend to shareholders of record as of the close of business on March 20, 2012. The special cash dividend, totaling \$62.5 million, was paid on May 15, 2012.

Our Board of Directors may determine future dividends after giving consideration to our levels of profit and cash flow, capital requirements, current and future liquidity, restrictions as part of our credit facility as well as financial and other conditions existing at the time.

### ***Purchases of Equity Securities by the Issuer and Affiliated Purchasers***

None.

### ***Sales of Unregistered Securities***

None.

### ***Securities Authorized for Issuance Under Equity Compensation Plans***

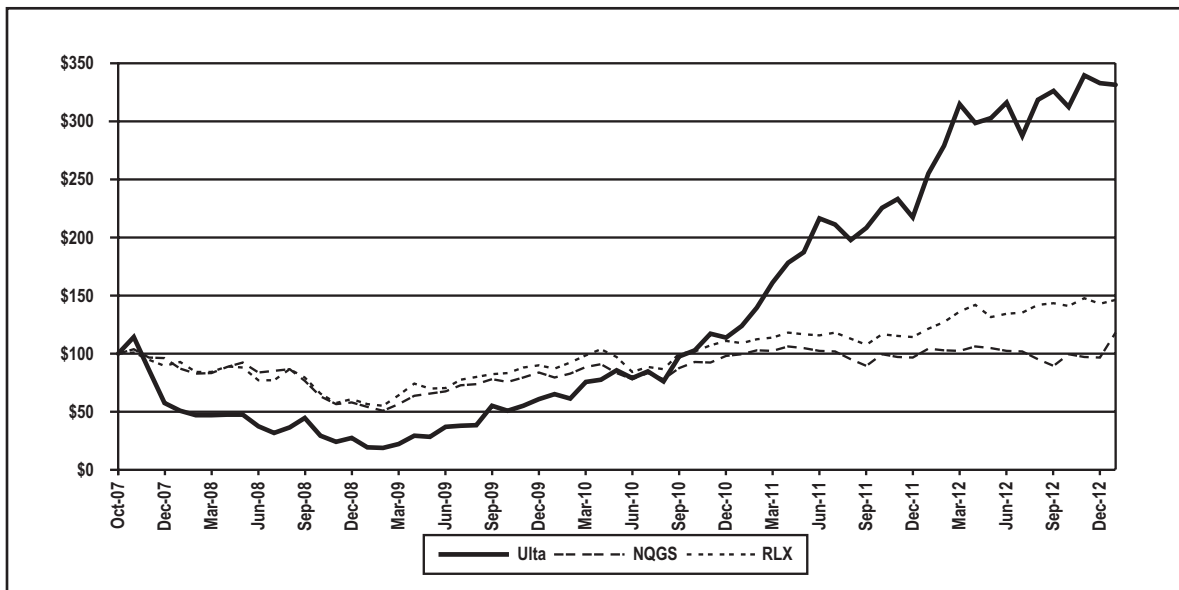
The following table provides information about Ulta common stock that may be issued under our equity compensation plans as of February 2, 2013.

<u>Plan category</u>	<u>Number of securities to be issued upon exercise of outstanding options, warrants and rights</u>	<u>Weighted-average exercise price of outstanding options, warrants and rights</u>	<u>Number of securities remaining available for future issuance under equity compensation plans</u>
Equity compensation plans approved by security holders .....	1,806,801	\$41.60	4,916,248
Equity compensation plans not approved by security holders .....	—	—	—
Total .....	<u>1,806,801</u>	<u>\$41.60</u>	<u>4,916,248</u>

### Stock Performance Graph

The following performance graph and related information shall not be deemed “soliciting material” or to be “filed” with the SEC, nor shall such information be incorporated by reference into any future filing under the Securities Act of 1933 or Securities Exchange Act of 1934, each as amended, except to the extent that we specifically incorporate it by reference into such filing.

Set forth below is a graph comparing the cumulative total stockholder return on Ulta’s common stock with the NASDAQ Global Select Market Composite Index (NQGS) and the S&P Retail Index (RLX) for the period covering Ulta’s first trading day on October 25, 2007 through the end of Ulta’s fiscal year ended February 2, 2013. The graph assumes an investment of \$100 made at the closing of trading on October 25, 2007, in (i) Ulta’s common stock, (ii) the stocks comprising the NQGS and (iii) stocks comprising the RLX. All values assume reinvestment of the full amount of all dividends, if any, into additional shares of the same class of equity securities at the frequency with which dividends are paid on such securities during the applicable time period.





## Item 6. Selected Financial Data

The following table presents our selected financial data. The table should be read in conjunction with Item 7, “Management’s Discussion and Analysis of Financial Condition and Results of Operations,” and Item 8, “Financial Statements and Supplementary Data,” of this Annual Report on Form 10-K.

	Fiscal year ended(1)				
	February 2, 2013	January 28, 2012	January 29, 2011	January 30, 2010	January 31, 2009
	(In thousands, except per share and per square foot data)				
<b>Income statement:</b>					
Net sales(2) . . . . .	\$2,220,256	\$1,776,151	\$1,454,838	\$1,222,771	\$1,084,646
Cost of sales . . . . .	1,436,582	1,159,311	970,753	846,202	752,939
Gross profit . . . . .	783,674	616,840	484,085	376,569	331,707
Selling, general and administrative expenses . . . . .	488,880	410,658	358,106	302,413	271,095
Pre-opening expenses . . . . .	14,816	9,987	7,095	6,003	14,311
Operating income . . . . .	279,978	196,195	118,884	68,153	46,301
Interest expense . . . . .	185	587	755	2,202	3,943
Income before income taxes . . . . .	279,793	195,608	118,129	65,951	42,358
Income tax expense . . . . .	107,244	75,344	47,099	26,595	17,090
Net income . . . . .	<u>\$ 172,549</u>	<u>\$ 120,264</u>	<u>\$ 71,030</u>	<u>\$ 39,356</u>	<u>\$ 25,268</u>
Net income per common share:					
Basic . . . . .	\$ 2.73	\$ 1.96	\$ 1.20	\$ 0.68	\$ 0.44
Diluted . . . . .	\$ 2.68	\$ 1.90	\$ 1.16	\$ 0.66	\$ 0.43
Weighted average common shares outstanding:					
Basic . . . . .	63,250	61,259	58,959	57,915	57,425
Diluted . . . . .	64,396	63,334	61,288	59,237	58,967
Dividends declared per common share . . . . .	\$ 1.00	\$ —	\$ —	\$ —	\$ —
<b>Other operating data:</b>					
Comparable store sales increase(3) . . . . .	8.8%	10.9%	11.0%	1.4%	0.2%
Number of stores end of year . . . . .	550	449	389	346	311
Total square footage end of year . . . . .	5,847,393	4,747,148	4,094,808	3,613,840	3,240,579
Total square footage per store(4) . . . . .	10,632	10,573	10,526	10,445	10,420
Average total square footage(5) . . . . .	5,315,653	4,413,236	3,811,597	3,459,628	2,960,355
Net sales per average total square foot(6) . . .	\$ 418	\$ 402	\$ 382	\$ 353	\$ 366
Capital expenditures . . . . .	188,578	128,636	97,115	68,105	110,863
Depreciation and amortization . . . . .	88,233	75,931	64,936	62,166	51,445
<b>Balance sheet data:</b>					
Cash and cash equivalents . . . . .	\$ 320,475	\$ 253,738	\$ 111,185	\$ 4,017	\$ 3,638
Working capital . . . . .	568,257	415,377	241,032	136,417	159,695
Property and equipment, net . . . . .	483,059	376,985	326,099	290,861	292,224
Total assets . . . . .	1,275,249	957,217	730,488	553,635	568,932
Total debt . . . . .	—	—	—	—	106,047
Total stockholders’ equity . . . . .	786,942	584,704	402,533	292,608	244,968

- (1) Our fiscal year-end is the Saturday closest to January 31 based on a 52/53-week year. Each fiscal year consists of four 13-week quarters, with an extra week added onto the fourth quarter every five or six years.
- (2) Fiscal 2012 was a 53-week operating year and the 53<sup>rd</sup> week represented approximately \$40 million in net sales.
- (3) Comparable store sales increase reflects sales for stores beginning on the first day of the 14th month of operation. Remodeled stores are included in comparable store sales unless the store was closed for a portion of the current or comparable prior year.
- (4) Total square footage per store is calculated by dividing total square footage at end of year by number of stores at end of year.
- (5) Average total square footage represents a weighted average which reflects the effect of opening stores in different months throughout the year.
- (6) Net sales per average total square foot was calculated by dividing net sales for the year by the average square footage for those stores open during each year.

### **Item 7. Management's Discussion and Analysis of Financial Condition and Results of Operations**

*The following discussion and analysis of our financial condition and results of operations should be read in conjunction with our financial statements and related notes included elsewhere in this Annual Report on Form 10-K. This discussion contains forward-looking statements within the meaning of Section 21E of the Securities Exchange Act of 1934, as amended, and the safe harbor provisions of the Private Securities Litigation Reform Act of 1995, which reflect our current views with respect to, among other things, future events and financial performance. You can identify these forward-looking statements by the use of forward-looking words such as "outlook," "believes," "expects," "plans," "estimates," or other comparable words. Any forward-looking statements contained in this Form 10-K are based upon our historical performance and on current plans, estimates and expectations. The inclusion of this forward-looking information should not be regarded as a representation by us or any other person that the future plans, estimates or expectations contemplated by us will be achieved. Such forward-looking statements are subject to various risks and uncertainties, which include, without limitation: the impact of weakness in the economy; changes in the overall level of consumer spending; changes in the wholesale cost of our products; the possibility that we may be unable to compete effectively in our highly competitive markets; the possibility that our continued opening of new stores could strain our resources and have a material adverse effect on our business and financial performance; the possibility that new store openings and existing locations may be impacted by developer or co-tenant issues; the possibility that the capacity of our distribution and order fulfillment infrastructure may not be adequate to support our recent growth and expected future growth plans; the possibility of material disruptions to our information systems; weather conditions that could negatively impact sales; our ability to attract and retain key executive personnel; our ability to successfully execute and implement our common stock repurchase program; and other risk factors detailed in our public filings with the Securities and Exchange Commission (the "SEC"), including risk factors contained in Item 1A, "Risk Factors" of this Annual Report on Form 10-K for the year ended February 2, 2013. We assume no obligation to update any forward-looking statements as a result of new information, future events or developments. References in the following discussion to "we", "us", "our", "the Company", "Ulta" and similar references mean Ulta Salon, Cosmetics & Fragrance, Inc. unless otherwise expressly stated or the context otherwise requires.*

### **Overview**

We were founded in 1990 as a beauty retailer at a time when prestige, mass and salon products were sold through distinct channels – department stores for prestige products, drug stores and mass merchandisers for mass products, and salons and authorized retail outlets for professional hair care products. After extensive research, we recognized an opportunity to better satisfy how women want to shop for beauty products. We developed a unique retail approach by combining one-stop shopping, a compelling value proposition, convenient locations and an uplifting specialty retail experience. We believe our strategy provides us with the competitive advantages that have contributed to our strong financial performance.

We are currently the largest beauty retailer that provides one-stop shopping for prestige, mass and salon products and salon services in the United States. We focus on providing affordable indulgence to our customers by combining unmatched product breadth, value and convenience with the distinctive environment and experience of a specialty retailer. Key aspects of our business include our ability to offer our customers a broad selection of over 20,000 beauty products across the categories of cosmetics, fragrance, haircare, skincare, bath and body products and salon styling tools, as well as salon styling tools. We focus on delivering a compelling value proposition to our customers across all of our product categories. Our stores are predominately located in convenient, high-traffic locations such as power centers.

The continued growth of our business and any future increases in net sales, net income and cash flows is dependent on our ability to execute our growth strategy, including accelerating store growth, introducing new products, services and brands, enhancing our loyalty program, broadening our marketing reach, increasing our digital focus including Ulta.com and improving our operating margin. We believe that the expanding U.S. beauty products and salon services industry, the shift in distribution of prestige beauty products from department stores to specialty retail stores, coupled with Ulta's competitive strengths, positions us to capture additional market share in the industry through successful execution of our growth strategy.

Comparable store sales is a key metric that is monitored closely within the retail industry. Our comparable store sales have fluctuated in the past and we expect them to continue to fluctuate in the future. A variety of factors affect our comparable store sales, including general U.S. economic conditions, changes in merchandise strategy or mix, and timing and effectiveness of our marketing activities, among others. We do not expect our 8.8% fiscal 2012 comparable store sales increase to continue into the future. Our long-term annual comparable store sales increase target is 4% to 6%, including the impact of e-commerce sales starting in 2013.

Over the long-term, our growth strategy is to increase total net sales through increases in our comparable store sales and by opening new stores. Gross profit as a percentage of net sales is expected to increase as a result of our ability to expand merchandise margin and leverage our supply chain infrastructure and fixed store costs with comparable store sales increases and operating efficiencies. We plan to continue to improve our operating results by leveraging our fixed costs and decreasing our selling, general and administrative expenses, as a percentage of our net sales.

### **Global economic conditions**

Economic conditions in the U.S. continue to be uneven. Fiscal stress in Europe and economic uncertainty in the U.S. related to deficit issues, potential tax increases and federal spending cuts have resulted in significant fluctuations in the financial markets. While the U.S. credit markets have stabilized and credit availability has improved compared to the recent recessionary period, economic growth is expected to continue to be weak. Consumer spending habits are affected by levels of unemployment, unsettled financial markets, weakness in housing and real estate, higher interest rates, fuel and energy costs, and consumer perception of economic conditions, among others. Sudden negative changes in one or more of the factors that affect consumer spending could adversely affect consumer spending levels which could lead to reduced consumer demand for our merchandise and adversely affect our sales levels and financial performance.

### **Basis of presentation**

The Company has determined its operating segments on the same basis that it uses to internally evaluate performance. We have combined our three operating segments: retail stores, salon services and e-commerce, into one reportable segment because they have a similar class of consumer, economic characteristics, nature of products and distribution methods.

Net sales include store and e-commerce merchandise sales as well as salon service revenue. We recognize merchandise revenue at the point of sale in our retail stores and the time of shipment in the case of Internet sales. Merchandise sales are recorded net of estimated returns. Salon service revenue is recognized at the time the service is provided. Gift card sales revenue is deferred until the customer redeems the gift card. Company coupons and other incentives are recorded as a reduction of net sales.

Comparable store sales reflect sales for stores beginning on the first day of the 14th month of operation. Therefore, a store is included in our comparable store base on the first day of the period after one year of

operations plus the initial one month grand opening period. Non-comparable store sales include sales from new stores that have not yet completed their 13th month of operation and stores that were closed for part or all of the period in either year as a result of remodel activity. Remodeled stores are included in comparable store sales unless the store was closed for a portion of the current or prior period. E-commerce merchandise sales are excluded from comparable store sales. Starting in the first quarter of 2013, comparable store sales will be reported including the Company's e-commerce business. There may be variations in the way in which some of our competitors and other retailers calculate comparable or same store sales.

Measuring comparable store sales allows us to evaluate the performance of our store base as well as several other aspects of our overall strategy. Several factors could positively or negatively impact our comparable store sales results:

- the general national, regional and local economic conditions and corresponding impact on customer spending levels;
- the introduction of new products or brands;
- the location of new stores in existing store markets;
- competition;
- our ability to respond on a timely basis to changes in consumer preferences;
- the effectiveness of our various marketing activities; and
- the number of new stores opened and the impact on the average age of all of our comparable stores.

Cost of sales includes:

- the cost of merchandise sold, including all vendor allowances, which are treated as a reduction of merchandise costs;
- warehousing and distribution costs including labor and related benefits, freight, rent, depreciation and amortization, real estate taxes, utilities, and insurance;
- store occupancy costs including rent, depreciation and amortization, real estate taxes, utilities, repairs and maintenance, insurance, licenses, and cleaning expenses;
- salon payroll and benefits;
- customer loyalty program expense; and
- shrink and inventory valuation reserves.

Our cost of sales may be negatively impacted as we open an increasing number of stores. Changes in our merchandise mix may also have an impact on cost of sales. This presentation of items included in cost of sales may not be comparable to the way in which our competitors or other retailers compute their cost of sales.

Selling, general and administrative expenses include:

- payroll, bonus and benefit costs for retail and corporate employees;
- advertising and marketing costs;
- occupancy costs related to our corporate office facilities;
- stock-based compensation expense;
- depreciation and amortization for all assets except those related to our retail and warehouse operations, which is included in cost of sales; and
- legal, finance, information systems and other corporate overhead costs.

This presentation of items in selling, general and administrative expenses may not be comparable to the way in which our competitors or other retailers compute their selling, general and administrative expenses.

Pre-opening expense includes non-capital expenditures during the period prior to store opening for new, remodeled and relocated stores including rent during the construction period for new and relocated stores, store set-up labor, management and employee training, and grand opening advertising.

Interest expense includes interest costs and unused facility fees associated with our credit facility, which is structured as an asset based lending instrument. Our credit facility interest is based on a variable interest rate structure which can result in increased cost in periods of rising interest rates.

Income tax expense reflects the federal statutory tax rate and the weighted average state statutory tax rate for the states in which we operate stores.

## Results of operations

Our fiscal years are the 52 or 53 week periods ending on the Saturday closest to January 31. The Company's fiscal years ended February 2, 2013, January 28, 2012 and January 29, 2011 were 53, 52 and 52 week years, respectively, and are hereafter referred to as fiscal 2012, fiscal 2011 and fiscal 2010.

As of February 2, 2013, we operated 550 stores across 45 states. The following tables present the components of our results of operations for the periods indicated:

<u>(Dollars in thousands)</u>	<u>Fiscal year ended</u>		
	<u>February 2, 2013</u>	<u>January 28, 2012</u>	<u>January 29, 2011</u>
Net sales . . . . .	\$2,220,256	\$1,776,151	\$1,454,838
Cost of sales . . . . .	1,436,582	1,159,311	970,753
Gross profit . . . . .	783,674	616,840	484,085
Selling, general and administrative expenses . . . . .	488,880	410,658	358,106
Pre-opening expenses . . . . .	14,816	9,987	7,095
Operating income . . . . .	279,978	196,195	118,884
Interest expense . . . . .	185	587	755
Income before income taxes . . . . .	279,793	195,608	118,129
Income tax expense . . . . .	107,244	75,344	47,099
Net income . . . . .	<u>\$ 172,549</u>	<u>\$ 120,264</u>	<u>\$ 71,030</u>
Other operating data:			
Number of stores end of period . . . . .	550	449	389
Comparable store sales increase . . . . .	8.8%	10.9%	11.0%

<u>(Percentage of net sales)</u>	<u>Fiscal year ended</u>		
	<u>February 2, 2013</u>	<u>January 28, 2012</u>	<u>January 29, 2011</u>
Net sales . . . . .	100.0%	100.0%	100.0%
Cost of sales . . . . .	64.7%	65.3%	66.7%
Gross profit . . . . .	35.3%	34.7%	33.3%
Selling, general and administrative expenses . . . . .	22.0%	23.1%	24.6%
Pre-opening expenses . . . . .	0.7%	0.6%	0.5%
Operating income . . . . .	12.6%	11.0%	8.2%
Interest expense . . . . .	0.0%	0.0%	0.1%
Income before income taxes . . . . .	12.6%	11.0%	8.1%
Income tax expense . . . . .	4.8%	4.2%	3.2%
Net income . . . . .	<u>7.8%</u>	<u>6.8%</u>	<u>4.9%</u>



## **Fiscal year 2012 versus fiscal year 2011**

### ***Net sales***

Net sales increased \$444.1 million, or 25.0%, to \$2,220.3 million in fiscal 2012 compared to \$1,776.2 million in fiscal 2011. Salon service sales increased \$22.9 million, or 23.2% to \$121.4 million compared to \$98.5 million in fiscal 2011. The sales increases are due to the opening of 101 net new stores in 2012 and a 8.8% increase in comparable store sales which was primarily due to a 6.5% increase in store traffic. Non-comparable stores, which include stores opened in fiscal 2012 as well as stores opened in fiscal 2011 which have not yet turned comparable, contributed \$291.0 million of the net sales increase while comparable stores contributed \$153.1 million of the total net sales increase. We attribute the increase in comparable store sales to our successful marketing and merchandise strategies.

### ***Gross profit***

Gross profit increased \$166.9 million, or 27.0%, to \$783.7 million in fiscal 2012, compared to \$616.8 million, in fiscal 2011. Gross profit as a percentage of net sales increased 60 basis points to 35.3% in fiscal 2012 compared to 34.7% in fiscal 2011. The increase in gross profit margin in fiscal 2012 was primarily driven by:

- 50 basis points of leverage in fixed store costs attributed to the impact of significantly higher sales levels in fiscal 2012; and
- 30 basis points improvement in merchandise margins driven by our marketing and merchandising strategies.

### ***Selling, general and administrative expenses***

Selling, general and administrative (SG&A) expenses increased \$78.2 million, or 19.0%, to \$488.9 million in fiscal 2012 compared to \$410.7 million in fiscal 2011. As a percentage of net sales, SG&A expenses decreased 110 basis points to 22.0% in fiscal 2012 compared to 23.1% in fiscal 2011. The leverage in SG&A expense was primarily driven by:

- 70 basis points in corporate overhead leverage attributed to higher sales volume; and
- 40 basis points improvement in variable store and marketing expense leverage attributed to cost efficiencies and higher sales volume.

### ***Pre-opening expenses***

Pre-opening expenses increased \$4.8 million, or 48.4%, to \$14.8 million in fiscal 2012 compared to \$10.0 million in fiscal 2011. During fiscal 2012, we opened 102 new stores, remodeled 21 stores and relocated 3 stores. During fiscal 2011, we opened 61 new stores and remodeled 17 stores and relocated 2 stores.

### ***Interest expense***

Interest expense was \$0.2 million in fiscal 2012 and \$0.6 million in fiscal 2011. Interest expense for both periods represents various fees related to the credit facility. We did not utilize our credit facility during fiscal 2012 or 2011.

### ***Income tax expense***

Income tax expense of \$107.2 million in fiscal 2012 represents an effective tax rate of 38.3%, compared to fiscal 2011 tax expense of \$75.3 million and an effective tax rate of 38.5%. The lower tax rate in fiscal 2012 is primarily due to a decrease in state taxes and less non-deductible executive compensation compared to fiscal 2011.

### ***Net income***

Net income increased \$52.2 million, or 43.5%, to \$172.5 million in fiscal 2012 compared to \$120.3 million in fiscal 2011. The increase in net income was primarily due to an increase in gross profit of \$166.9 million, which was offset by a \$78.2 million increase in SG&A expenses and a \$31.9 million increase in income tax expense.

## **Fiscal year 2011 versus fiscal year 2010**

### ***Net sales***

Net sales increased \$321.4 million, or 22.1%, to \$1,776.2 million in fiscal 2011 compared to \$1,454.8 million in fiscal 2010. Salon service sales increased \$12.1 million, or 14.0% to \$98.5 million compared to \$86.4 million in fiscal 2010. The sales increases were due to the opening of 60 net new stores in 2011 and a 10.9% increase in comparable store sales which was primarily due to a 10.1% increase in store traffic. Non-comparable stores, which include stores opened in fiscal 2011 as well as stores opened in fiscal 2010 which have not yet turned comparable, contributed \$168.4 million of the net sales increase while comparable stores contributed \$153.0 million of the total net sales increase. We attribute the increase in comparable store sales to our successful marketing and merchandise strategies.

### ***Gross profit***

Gross profit increased \$132.7 million, or 27.4%, to \$616.8 million in fiscal 2011, compared to \$484.1 million, in fiscal 2010. Gross profit as a percentage of net sales increased 140 basis points to 34.7% in fiscal 2011 compared to 33.3% in fiscal 2010. The increase in gross profit margin in fiscal 2011 was primarily driven by:

- 80 basis points of leverage in fixed store costs attributed to the impact of significantly higher sales levels in fiscal 2011; and
- 70 basis points improvement in merchandise margin due primarily to improved promotional pricing and a shift in category mix towards higher margin product compared with fiscal 2010.

### ***Selling, general and administrative expenses***

Selling, general and administrative (SG&A) expenses increased \$52.6 million, or 14.7%, to \$410.7 million in fiscal 2011 compared to \$358.1 million in fiscal 2010. As a percentage of net sales, SG&A expenses decreased 150 basis points to 23.1% in fiscal 2011 compared to 24.6% in fiscal 2010. The leverage in SG&A expense was primarily driven by:

- 70 basis points improvement in variable store and marketing expense leverage attributed to cost efficiencies and higher sales volume; and
- 60 basis points in corporate overhead leverage, excluding the fiscal 2010 non-recurring compensation charge, attributed to higher sales volume.

### ***Pre-opening expenses***

Pre-opening expenses increased \$2.9 million, or 40.8%, to \$10.0 million in fiscal 2011 compared to \$7.1 million in fiscal 2010. During fiscal 2011, we opened 61 new stores, remodeled 17 stores and relocated 2 stores. During fiscal 2010, we opened 47 new stores and remodeled 13 stores and relocated 5 stores.

### ***Interest expense***

Interest expense was \$0.6 million in fiscal 2011 and \$0.8 million in fiscal 2010. Interest expense for both periods represents various fees related to the credit facility. We did not utilize our credit facility during fiscal 2011 or 2010.

### ***Income tax expense***

Income tax expense of \$75.3 million in fiscal 2011 represents an effective tax rate of 38.5%, compared to fiscal 2010 tax expense of \$47.1 million and an effective tax rate of 39.9%. The lower tax rate in fiscal 2011 is primarily due to a decrease in non-deductible compensation expense and increases in certain federal and state tax deductions and credits compared to fiscal 2010.

### ***Net income***

Net income increased \$49.3 million, or 69.3%, to \$120.3 million in fiscal 2011 compared to \$71.0 million in fiscal 2010. The increase in net income was primarily due to an increase in gross profit of \$132.7 million, which was offset by a \$52.6 million increase in SG&A expenses and a \$28.2 million increase in income tax expense.

## Liquidity and capital resources

Our primary cash needs are for capital expenditures for new, relocated and remodeled stores, increased merchandise inventories related to store expansion, supply chain improvements and for continued improvement in our information technology systems.

Our primary sources of liquidity are cash on hand and cash flows from operations, including changes in working capital, and borrowings under our credit facility. The most significant component of our working capital is merchandise inventories reduced by related accounts payable and accrued expenses. Our working capital position benefits from the fact that we generally collect cash from sales to customers the same day, or within several days of the related sale, while we typically have up to 30 days to pay our vendors.

Our working capital needs are greatest from August through November each year as a result of our inventory build-up during this period for the approaching holiday season. This is also the time of year when we are at maximum investment levels in our new store class and may not have collected all of the landlord allowances due to us as part of our lease agreements. Based on past performance and current expectations, we believe that cash on hand, cash generated from operations and borrowings under the credit facility will satisfy the Company's working capital needs, capital expenditure needs, commitments, and other liquidity requirements through at least the next 12 months.

The following table presents a summary of our cash flows for fiscal years 2012, 2011 and 2010:

<u>(In thousands)</u>	<u>Fiscal year ended</u>		
	<u>February 2, 2013</u>	<u>January 28, 2012</u>	<u>January 29, 2011</u>
Net cash provided by operating activities . . . . .	\$ 239,001	\$ 220,887	\$176,543
Net cash used in investing activities . . . . .	(188,578)	(128,636)	(97,115)
Net cash provided by financing activities . . . . .	16,314	50,302	27,740
Net increase in cash and cash equivalents . . . . .	<u>\$ 66,737</u>	<u>\$ 142,553</u>	<u>\$107,168</u>

## Operating activities

Operating activities consist of net income adjusted for certain non-cash items, including depreciation and amortization, non-cash stock-based compensation, realized gains or losses on disposal of property and equipment, and the effect of working capital changes.

Merchandise inventories were \$361.1 million at February 2, 2013, compared to \$244.6 million at January 28, 2012, representing an increase of \$116.5 million. Average inventory per store increased 20.5% compared to prior year. The increase in inventory is due to the addition of 101 net new stores opened since January 28, 2012 and incremental inventory related to the recently added prestige brand boutiques as well as strategic inventory investments to improve in-stock levels.

We had a current tax liability of \$10.1 million at the end of fiscal 2012 compared to \$4.0 million at the end of fiscal 2011. The increase in taxes payable is primarily due to an increase in taxable income.

Deferred rent liabilities were \$208.0 million at February 2, 2013, an increase of \$44.5 million compared to the prior year end. Deferred rent includes deferred construction allowances, future rental increases and rent holidays which are all recognized on a straight-line basis over their respective lease term. The increase is primarily due to the addition of 101 net new stores opened since January 28, 2012.

The \$53.4 million cash flow benefit from income taxes is attributed to Federal income tax deductions due to accelerated bonus depreciation on fixed assets and tax deductible stock option exercises.

## Investing activities

We have historically used cash primarily for new and remodeled stores as well as investments in information technology systems. Investment activities primarily related to capital expenditures were \$188.6 million in fiscal

2012, compared to \$128.6 million and \$97.1 million in fiscal 2011 and 2010, respectively. Capital expenditures increased in fiscal 2012 compared to fiscal 2011 due to the increase in our 2012 new store program. During fiscal 2012 we opened 102 new stores, remodeled 21 stores and relocated 3 stores, compared to 61 new stores, 17 remodels and 2 relocations during fiscal 2011 and 47 new stores, 13 remodels and 5 relocations during fiscal 2010.

### **Financing activities**

Financing activities in fiscal 2012, 2011 and 2010 consist principally of capital stock transactions and the related income tax effects and a dividend payment. Common stock repurchased in fiscal 2012 and 2011 represents the fair value of common shares repurchased from plan participants in connection with shares withheld to satisfy minimum statutory tax obligations upon the vesting of restricted stock.

We had no borrowings outstanding under our credit facility at the end of fiscal 2012, 2011 and 2010. The zero outstanding borrowings position is due to a combination of factors including strong sales growth, overall performance of management initiatives including expense control as well as inventory and other working capital reductions. We may require borrowings under the facility from time to time in future periods to support our new store program and seasonal inventory needs.

### **Dividend**

On March 8, 2012, we announced that our Board of Directors had declared a \$1.00 per share special cash dividend to shareholders of record as of the close of business on March 20, 2012. The special cash dividend totaling \$62.5 million was paid on May 15, 2012.

Our Board of Directors may determine future dividends after giving consideration to our levels of profit and cash flow, capital requirements, current and future liquidity, restrictions included as part of our credit facility as well as financial and other conditions existing at the time.

### **Credit facility**

On October 19, 2011, the Company entered into an Amended and Restated Loan and Security Agreement (the Loan Agreement) with Wells Fargo Bank, National Association, as Administrative Agent, Collateral Agent and a Lender thereunder, Wells Fargo Capital Finance LLC as a Lender, J.P. Morgan Securities LLC as a Lender, JP Morgan Chase Bank, N.A. as a Lender and PNC Bank, National Association, as a Lender. The Loan Agreement amended and restated the Loan and Security Agreement, dated as of August 31, 2010, by and among the lenders. The Loan Agreement extends the maturity of the Company's credit facility to October 2016, provides maximum revolving loans equal to the lesser of \$200,000 or a percentage of eligible owned inventory, contains a \$10,000 subfacility for letters of credit and allows the Company to increase the revolving facility by an additional \$50,000, subject to consent by each lender and other conditions. The Loan Agreement contains a requirement to maintain a minimum amount of excess borrowing availability at all times. Substantially all of the Company's assets are pledged as collateral for outstanding borrowings under the facility. Outstanding borrowings will bear interest at the prime rate or Libor plus 1.50% and the unused line fee is 0.225%.

On September 5, 2012, we entered into Amendment No. 1 to the Amended and Restated Loan and Security Agreement (the Amendment) with the lender group. The Amendment updated certain administrative terms and conditions and provides us greater flexibility to take certain corporate actions. There were no changes to the revolving loan amounts available, interest rates, covenants or maturity date under terms of the Loan Agreement.

As of February 2, 2013 and January 28, 2012, the Company had no borrowings outstanding under its credit facility and the Company was in compliance with all terms and covenants of the agreement.

### **Seasonality**

Our business is subject to seasonal fluctuation. Significant portions of our net sales and profits are realized during the fourth quarter of the fiscal year due to the holiday selling season. To a lesser extent, our business is also affected by Mothers' Day as well as the "Back to School" season and Valentine's Day. Any decrease in sales

during these higher sales volume periods could have an adverse effect on our business, financial condition, or operating results for the entire fiscal year. Our quarterly results of operations have varied in the past and are likely to do so again in the future. As such, we believe that period-to-period comparisons of our results of operations should not be relied upon as an indication of our future performance.

**Impact of inflation and changing prices**

Although we do not believe that inflation has had a material impact on our financial position or results of operations to date, a high rate of inflation in the future may have an adverse effect on our ability to maintain current levels of gross margin and selling, general and administrative expenses as a percentage of net sales if the selling prices of our products do not increase with these increased costs. In addition, inflation could materially increase the interest rates on our debt.

**Off-balance sheet arrangements**

Our off-balance sheet arrangements consist of operating lease obligations and letters of credit. We do not have any non-cancelable purchase commitments as of February 2, 2013.

**Contractual obligations**

We lease retail stores, warehouses, corporate offices and certain equipment under operating leases with various expiration dates through fiscal 2027. Our store leases generally have initial lease terms of 10 years and include renewal options under substantially the same terms and conditions as the original leases. In addition to future minimum lease payments, most of our lease agreements include escalating rent provisions which we recognize straight-line over the term of the lease, including any lease renewal periods deemed to be probable. For certain locations, we receive cash tenant allowances and we report these amounts as deferred rent, which is amortized on a straight-line basis as a reduction of rent expense over the term of the lease, including any lease renewal periods deemed to be probable. While a number of our store leases include contingent rentals, contingent rent amounts are insignificant.

The following table summarizes our contractual arrangements and the timing and effect that such commitments are expected to have on our liquidity and cash flows in future periods. The table below excludes variable expenses related to contingent rent, common area maintenance, insurance and real estate taxes. The table below includes obligations for executed agreements for which we do not yet have the right to control the use of the property as of February 2, 2013:

<u>(In thousands)</u>	<u>Total</u>	<u>Less Than 1 Year</u>	<u>1 to 3 Years</u>	<u>3 to 5 Years</u>	<u>After 5 Years</u>
Operating lease obligations(1) . . . . .	\$1,208,527	\$155,542	\$313,609	\$278,565	\$460,811

(1) Variable operating lease obligations related to common area maintenance, insurance and real estate taxes are not included in the table above. Total expenses related to common area maintenance, insurance and real estate taxes for fiscal 2012 were \$30.5 million.

**Critical accounting policies and estimates**

Management’s discussion and analysis of financial condition and results of operations is based upon our financial statements, which have been prepared in accordance with U.S. generally accepted accounting principles (GAAP). The preparation of these financial statements required the use of estimates and judgments that affect the reported amounts of our assets, liabilities, revenues and expenses. Management bases estimates on historical experience and other assumptions it believes to be reasonable under the circumstances and evaluates these estimates on an on-going basis. Actual results may differ from these estimates. A discussion of our more significant estimates follows. Management has discussed the development, selection, and disclosure of these estimates and assumptions with the audit committee of the board of directors.



## **Inventory valuation**

Merchandise inventories are carried at the lower of average cost or market value. Cost is determined using the weighted-average cost method and includes costs incurred to purchase and distribute goods as well as related vendor allowances including co-op advertising, markdowns, and volume discounts. We record valuation adjustments to our inventories if the cost of a specific product on hand exceeds the amount we expect to realize from the ultimate sale or disposal of the inventory. These estimates are based on management's judgment regarding future demand, age of inventory, and analysis of historical experience. If actual demand or market conditions are different than those projected by management, future merchandise margin rates may be unfavorably or favorably affected by adjustments to these estimates.

Inventories are adjusted for the results of periodic physical inventory counts at each of our locations. We record a shrink reserve representing management's estimate of inventory losses by location that have occurred since the date of the last physical count. This estimate is based on management's analysis of historical results and operating trends. Adjustments to earnings resulting from revisions to management's estimates of the lower of cost or market and shrink reserves have been insignificant during fiscal 2012, 2011 and 2010.

## **Impairment of long-lived tangible assets**

We review long-lived tangible assets whenever events or circumstances indicate these assets might not be recoverable based on undiscounted future cash flows. Assets are reviewed at the store level, which is the lowest level for which cash flows can be identified. Significant estimates are used in determining future operating results of each store over its remaining lease term. If such assets are considered to be impaired, the impairment to be recognized is measured by the amount by which the carrying amount of the assets exceeds the fair value of the assets. We have not recorded an impairment charge in any of the periods presented in the accompanying financial statements.

## **Share-based compensation**

We account for share-based compensation in accordance with the Accounting Standards Codification<sup>TM</sup> (ASC) rules for stock compensation. Share-based compensation cost is measured at the grant date, based on the fair value of the award, and is recognized on a straight-line method over the requisite service period for awards expected to vest.

We estimate the grant date fair value of stock options using a Black-Scholes valuation model. The expected volatility is based on volatilities of our stock and a peer group of publicly-traded companies. The risk free interest rate is based on the United States Treasury yield curve in effect on the date of grant for the respective expected life of the option. The expected life represents the time the options granted are expected to be outstanding. We have limited historical data related to exercise behavior since our initial public offering on October 30, 2007. As a result, we have elected to use the shortcut approach to determine the expected life in accordance with the SEC Staff Accounting Bulletin on share-based payments.

See notes to financial statements, "Summary of significant accounting policies — Share-based compensation," for disclosure related to the Company's stock compensation expense and related valuation model assumptions. See Note 9 to our financial statements, "Share-based awards," for disclosure related to our stock compensation expense and related valuation model assumptions.

## **Item 7A. *Quantitative and Qualitative Disclosures about Market Risk***

Market risk represents the risk of loss that may impact our financial position due to adverse changes in financial market prices and rates. Our market risk exposure is primarily the result of fluctuations in interest rates. We do not hold or issue financial instruments for trading purposes.

### **Interest rate sensitivity**

We are exposed to interest rate risks primarily through borrowing under our credit facility. Interest on our borrowings is based upon variable rates. We did not utilize the credit facility during fiscal 2012.

**Item 8. *Financial Statements and Supplementary Data***

See the index included under Item 15, “Exhibits and Financial Statement Schedules”.

**Item 9. *Changes in and Disagreements with Accountants on Accounting and Financial Disclosure***

None.

**Item 9A. *Controls and Procedures***

**Evaluation of Disclosure Controls and Procedures over Financial Reporting**

We have established disclosure controls and procedures to ensure that material information relating to the Company is made known to the officers who certify our financial reports and to the members of our senior management and board of directors.

Based on management’s evaluation as of February 2, 2013, our Chief Executive Officer and Chief Financial Officer have concluded that our disclosure controls and procedures (as defined in Rules 13a-15(e) and 15d-15(e) under the Securities Exchange Act of 1934) are effective to ensure that the information required to be disclosed by us in our reports that we file or submit under the Securities Exchange Act of 1934 is recorded, processed, summarized and reported within the time periods specified in the Securities and Exchange Commission’s rules and forms, and that such information is accumulated and communicated to our management, including the Chief Executive Officer and Chief Financial Officer, as appropriate, to allow timely decisions regarding required disclosure.

**Management’s Annual Report on Internal Control over Financial Reporting**

Our management is responsible for establishing and maintaining adequate internal control over financial reporting for the Company. Internal control over financial reporting is a process designed by, or under the supervision of the principal executive officer and principal financial officer and effected by the board of directors, management and other personnel, to provide reasonable assurance regarding the reliability of our financial reporting and the preparation of financial statements for external purposes in accordance with accounting principles generally accepted in the United States of America.

Under the supervision and with the participation of our principal executive officer and our principal financial officer, management evaluated the effectiveness of our internal control over financial reporting as of February 2, 2013, based on the criteria established in “Internal Control – Integrated Framework” issued by the Committee of Sponsoring Organizations of the Treadway Commission (COSO). Based on this evaluation, our principal executive officer and principal financial officer concluded that our internal controls over financial reporting were effective as of February 2, 2013. Ernst & Young LLP, the independent registered public accounting firm that audited our financial statements included in this Annual Report on Form 10-K, has audited the effectiveness of our internal control over financial reporting as of February 2, 2013 and has issued the attestation report included in Item 15 of this Annual Report on Form 10-K.

**Changes in Internal Control over Financial Reporting**

There were no changes to our internal controls over financial reporting during the three months ended February 2, 2013 that have materially affected, or are reasonably likely to materially affect, our internal controls over financial reporting.

**Item 9B. *Other Information***

None.

### **Part III**

#### **Item 10. *Directors, Executive Officers and Corporate Governance***

The information required by this item with respect to our executive officers is set forth after Part I, Item 4 of this report under the caption “Executive Officers of the Registrant.” The additional information required by this item is incorporated by reference to our definitive proxy statement to be filed within 120 days after our fiscal year ended February 2, 2013 pursuant to Regulation 14A under the Exchange Act in connection with our 2013 annual meeting of stockholders.

#### **Item 11. *Executive Compensation***

The information required by this item is incorporated by reference to our definitive proxy statement to be filed within 120 days after our fiscal year ended February 2, 2013 pursuant to Regulation 14A under the Exchange Act in connection with our 2013 annual meeting of stockholders.

#### **Item 12. *Security Ownership and Certain Beneficial Owners and Management and Related Stockholder Matters***

The information required by this item is incorporated by reference to our definitive proxy statement to be filed within 120 days after our fiscal year ended February 2, 2013 pursuant to Regulation 14A under the Exchange Act in connection with our 2013 annual meeting of stockholders.

#### **Item 13. *Certain Relationships and Related Transactions, and Director Independence***

The information required by this item is incorporated by reference to our definitive proxy statement to be filed within 120 days after our fiscal year ended February 2, 2013 pursuant to Regulation 14A under the Exchange Act in connection with our 2013 annual meeting of stockholders.

#### **Item 14. *Principal Accountant Fees and Services***

The information required by this item is incorporated by reference to our definitive proxy statement to be filed within 120 days after our fiscal year ended February 2, 2013 pursuant to Regulation 14A under the Exchange Act in connection with our 2013 annual meeting of stockholders.

**Part IV**

**Item 15. Exhibits and Financial Statement Schedules**

(a) The following documents are filed as a part of this Form 10-K:

Report of Independent Registered Public Accounting Firm .....	43
Balance Sheets .....	45
Statements of Income .....	46
Statements of Cash Flows .....	47
Statements of Stockholders' Equity .....	48
Notes to Financial Statements .....	49
Exhibits .....	61

The schedules required by Form 10-K have been omitted because they were inapplicable, included in the notes to the financial statements, or otherwise not required under the instructions contained in Regulation S-X.

## **Report of Independent Registered Public Accounting Firm**

The Board of Directors and Stockholders  
Ulta Salon, Cosmetics & Fragrance, Inc.

We have audited the accompanying balance sheets of Ulta Salon, Cosmetics & Fragrance, Inc. (the Company) as of February 2, 2013 and January 28, 2012, and the related statements of income, cash flows, and stockholders' equity for each of the three years in the period ended February 2, 2013. These financial statements are the responsibility of the Company's management. Our responsibility is to express an opinion on these financial statements based on our audits.

We conducted our audits in accordance with the standards of the Public Company Accounting Oversight Board (United States). Those standards require that we plan and perform the audit to obtain reasonable assurance about whether the financial statements are free of material misstatement. An audit includes examining, on a test basis, evidence supporting the amounts and disclosures in the financial statements. An audit also includes assessing the accounting principles used and significant estimates made by management, as well as evaluating the overall financial statement presentation. We believe that our audits provide a reasonable basis for our opinion.

In our opinion, the financial statements referred to above present fairly, in all material respects, the financial position of Ulta Salon, Cosmetics & Fragrance, Inc. at February 2, 2013 and January 28, 2012, and the results of its operations and its cash flows for each of the three years in the period ended February 2, 2013, in conformity with U.S. generally accepted accounting principles.

We also have audited, in accordance with the standards of the Public Company Accounting Oversight Board (United States), Ulta Salon, Cosmetics & Fragrance, Inc.'s internal control over financial reporting as of February 2, 2013, based on criteria established in Internal Control — Integrated Framework issued by the Committee of Sponsoring Organizations of the Treadway Commission and our report dated April 3, 2013, expressed an unqualified opinion thereon.

/s/ Ernst & Young LLP  
Chicago, Illinois  
April 3, 2013



## **Report of Independent Registered Public Accounting Firm**

The Board of Directors and Stockholders  
Ulta Salon, Cosmetics & Fragrance, Inc.

We have audited Ulta Salon, Cosmetics & Fragrance, Inc.'s internal control over financial reporting as of February 2, 2013, based on criteria established in Internal Control — Integrated Framework issued by the Committee of Sponsoring Organizations of the Treadway Commission (the COSO criteria). Ulta Salon, Cosmetics & Fragrance, Inc.'s management is responsible for maintaining effective internal control over financial reporting, and for its assessment of the effectiveness of internal control over financial reporting included in the accompanying Management's Annual Report on Internal Control over Financial Reporting. Our responsibility is to express an opinion on the company's internal control over financial reporting based on our audit.

We conducted our audit in accordance with the standards of the Public Company Accounting Oversight Board (United States). Those standards require that we plan and perform the audit to obtain reasonable assurance about whether effective internal control over financial reporting was maintained in all material respects. Our audit included obtaining an understanding of internal control over financial reporting, assessing the risk that a material weakness exists, testing and evaluating the design and operating effectiveness of internal control based on the assessed risk, and performing such other procedures as we considered necessary in the circumstances. We believe that our audit provides a reasonable basis for our opinion.

A company's internal control over financial reporting is a process designed to provide reasonable assurance regarding the reliability of financial reporting and the preparation of financial statements for external purposes in accordance with generally accepted accounting principles. A company's internal control over financial reporting includes those policies and procedures that (1) pertain to the maintenance of records that, in reasonable detail, accurately and fairly reflect the transactions and dispositions of the assets of the company; (2) provide reasonable assurance that transactions are recorded as necessary to permit preparation of financial statements in accordance with generally accepted accounting principles, and that receipts and expenditures of the company are being made only in accordance with authorizations of management and directors of the company; and (3) provide reasonable assurance regarding prevention or timely detection of unauthorized acquisition, use, or disposition of the company's assets that could have a material effect on the financial statements.

Because of its inherent limitations, internal control over financial reporting may not prevent or detect misstatements. Also, projections of any evaluation of effectiveness to future periods are subject to the risk that controls may become inadequate because of changes in conditions, or that the degree of compliance with the policies or procedures may deteriorate.

In our opinion, Ulta Salon, Cosmetics & Fragrance, Inc. maintained, in all material respects, effective internal control over financial reporting as of February 2, 2013, based on the COSO criteria.

We also have audited, in accordance with the standards of the Public Company Accounting Oversight Board (United States), the balance sheets of Ulta Salon, Cosmetics & Fragrance, Inc. as of February 2, 2013 and January 28, 2012, and the related statements of income, cash flows and stockholders' equity for each of the three years in the period ended February 2, 2013 and our report dated April 3, 2013 expressed an unqualified opinion thereon.

/s/ Ernst & Young LLP  
Chicago, Illinois  
April 3, 2013

**Ulta Salon, Cosmetics & Fragrance, Inc.**  
**Balance Sheets**

<u>(In thousands, except per share data)</u>	<u>February 2,</u> <u>2013</u>	<u>January 28,</u> <u>2012</u>
<b>Assets</b>		
Current assets:		
Cash and cash equivalents .....	\$ 320,475	\$253,738
Receivables, net .....	41,515	26,153
Merchandise inventories, net .....	361,125	244,647
Prepaid expenses and other current assets .....	50,452	43,430
Deferred income taxes .....	<u>15,757</u>	<u>12,264</u>
Total current assets .....	789,324	580,232
Property and equipment, net .....	483,059	376,985
Deferred compensation plan assets .....	<u>2,866</u>	<u>—</u>
Total assets .....	<u>\$1,275,249</u>	<u>\$957,217</u>
<b>Liabilities and stockholders' equity</b>		
Current liabilities:		
Accounts payable .....	\$ 118,886	\$ 86,442
Accrued liabilities .....	92,127	74,411
Accrued income taxes .....	<u>10,054</u>	<u>4,002</u>
Total current liabilities .....	221,067	164,855
Deferred rent .....	208,003	163,463
Deferred income taxes .....	56,361	44,195
Other long-term liabilities .....	<u>2,876</u>	<u>—</u>
Total liabilities .....	488,307	372,513
Commitments and contingencies (note 4)		
Stockholders' equity:		
Common stock, \$.01 par value, 400,000 shares authorized; 64,565 and 62,764 shares issued; 64,009 and 62,209 shares outstanding; at February 2, 2013, and January 28, 2012, respectively .....	645	627
Treasury stock-common, at cost .....	(7,494)	(7,415)
Additional paid-in capital .....	496,930	404,698
Retained earnings .....	<u>296,861</u>	<u>186,794</u>
Total stockholders' equity .....	<u>786,942</u>	<u>584,704</u>
Total liabilities and stockholders' equity .....	<u>\$1,275,249</u>	<u>\$957,217</u>

See accompanying notes to financial statements.

**Ulta Salon, Cosmetics & Fragrance, Inc.**  
**Statements of Income**

<u>(In thousands, except per share data)</u>	Fiscal year ended		
	February 2, 2013	January 28, 2012	January 29, 2011
Net sales .....	\$2,220,256	\$1,776,151	\$1,454,838
Cost of sales .....	1,436,582	1,159,311	970,753
Gross profit .....	783,674	616,840	484,085
Selling, general and administrative expenses .....	488,880	410,658	358,106
Pre-opening expenses .....	14,816	9,987	7,095
Operating income .....	279,978	196,195	118,884
Interest expense .....	185	587	755
Income before income taxes .....	279,793	195,608	118,129
Income tax expense .....	107,244	75,344	47,099
Net income .....	\$ 172,549	\$ 120,264	\$ 71,030
Net income per common share:			
Basic .....	\$ 2.73	\$ 1.96	\$ 1.20
Diluted .....	\$ 2.68	\$ 1.90	\$ 1.16
Weighted average common shares outstanding:			
Basic .....	63,250	61,259	58,959
Diluted .....	64,396	63,334	61,288
Dividends declared per common share .....	\$ 1.00	\$ —	\$ —

See accompanying notes to financial statements.

**Ulta Salon, Cosmetics & Fragrance, Inc.**  
**Statements of Cash Flows**

<u>(In thousands)</u>	<b>Fiscal year ended</b>		
	<b>February 2, 2013</b>	<b>January 28, 2012</b>	<b>January 29, 2011</b>
<b>Operating activities</b>			
Net income .....	\$ 172,549	\$ 120,264	\$ 71,030
Adjustments to reconcile net income to net cash provided by operating activities:			
Depreciation and amortization .....	88,233	75,931	64,936
Deferred income taxes .....	8,673	10,827	7,741
Non-cash stock compensation charges .....	13,375	11,605	11,155
Excess tax benefits from stock-based compensation .....	(47,345)	(25,899)	(10,640)
Loss (gain) on disposal of property and equipment .....	1,074	1,324	(519)
Change in operating assets and liabilities:			
Receivables .....	(15,362)	(3,861)	(8,815)
Merchandise inventories .....	(116,478)	(26,131)	(11,568)
Prepaid expenses and other current assets .....	(9,888)	(10,640)	(2,518)
Income taxes .....	53,397	40,585	(10,354)
Accounts payable .....	32,444	(651)	30,706
Accrued liabilities .....	13,789	(1,358)	14,535
Deferred rent .....	44,540	28,891	20,854
Net cash provided by operating activities .....	239,001	220,887	176,543
<b>Investing activities</b>			
Purchases of property and equipment .....	(188,578)	(128,636)	(97,115)
Net cash used in investing activities .....	(188,578)	(128,636)	(97,115)
<b>Financing activities</b>			
Dividends paid .....	(62,482)	—	—
Excess tax benefits from stock-based compensation .....	47,345	25,899	10,640
Stock options exercised .....	31,530	27,639	17,100
Common stock repurchased .....	(79)	(3,236)	—
Net cash provided by financing activities .....	16,314	50,302	27,740
Net increase in cash and cash equivalents .....	66,737	142,553	107,168
Cash and cash equivalents at beginning of year .....	253,738	111,185	4,017
Cash and cash equivalents at end of year .....	<u>\$ 320,475</u>	<u>\$ 253,738</u>	<u>\$111,185</u>
<b>Supplemental cash flow information</b>			
Cash paid for income taxes (net of refunds) .....	<u>\$ 45,354</u>	<u>\$ 24,162</u>	<u>\$ 49,871</u>
Noncash investing and financing activities:			
Change in property and equipment included in accrued liabilities .....	<u>\$ 6,803</u>	<u>\$ (495)</u>	<u>\$ 2,540</u>

See accompanying notes to financial statements.

**Ulta Salon, Cosmetics & Fragrance, Inc.**  
**Statements of Stockholders' Equity**

	Common Stock		Treasury - Common Stock		Additional Paid-In Capital	Retained Earnings / (Accumulated Deficit)	Total Stockholders' Equity
	Issued Shares	Amount	Treasury Shares	Amount			
<b>(In thousands)</b>							
<b>Balance — January 30, 2010</b>	58,674	\$586	(505)	\$(4,179)	\$300,701	\$ (4,500)	\$292,608
Stock options exercised	2,033	20	—	—	17,080	—	17,100
Net income	—	—	—	—	—	71,030	71,030
Comprehensive income	—	—	—	—	—	—	71,030
Excess tax benefits from stock-based compensation	—	—	—	—	10,640	—	10,640
Stock compensation charge	—	—	—	—	11,155	—	11,155
<b>Balance — January 29, 2011</b>	60,707	\$606	(505)	\$(4,179)	\$339,576	\$ 66,530	\$402,533
Stock options exercised	2,057	21	—	—	27,618	—	27,639
Common stock repurchased	—	—	(50)	(3,236)	—	—	(3,236)
Net income	—	—	—	—	—	120,264	120,264
Comprehensive income	—	—	—	—	—	—	120,264
Excess tax benefits from stock-based compensation	—	—	—	—	25,899	—	25,899
Stock compensation charge	—	—	—	—	11,605	—	11,605
<b>Balance — January 28, 2012</b>	62,764	\$627	(555)	\$(7,415)	\$404,698	\$186,794	\$584,704
Stock options exercised and other awards	1,801	18	—	—	31,512	—	31,530
Common stock repurchased	—	—	(1)	(79)	—	—	(79)
Net income	—	—	—	—	—	172,549	172,549
Comprehensive income	—	—	—	—	—	—	172,549
Excess tax benefits from stock-based compensation	—	—	—	—	47,345	—	47,345
Stock compensation charge	—	—	—	—	13,375	—	13,375
Dividends paid	—	—	—	—	—	(62,482)	(62,482)
<b>Balance — February 2, 2013</b>	64,565	\$645	(556)	\$(7,494)	\$496,930	\$296,861	\$786,942

See accompanying notes to financial statements.

**Ulta Salon, Cosmetics & Fragrance, Inc.**  
**Notes to Financial Statements**  
**(In thousands, except per share data)**

**1. Business and basis of presentation**

Ulta Salon, Cosmetics & Fragrance, Inc. (Company or Ulta) was incorporated in the state of Delaware on January 9, 1990, to operate specialty retail stores selling cosmetics, fragrance, haircare and skincare products, and related accessories and services. The stores also feature full-service salons. As of February 2, 2013, the Company operated 550 stores in 45 states. All amounts are stated in thousands, with the exception of per share amounts and number of stores.

The Company has determined its operating segments on the same basis that it uses to internally evaluate performance. The Company has combined its three operating segments: retail stores, salon services and e-commerce, into one reportable segment because they have a similar class of consumer, economic characteristics, nature of products and distribution methods.

**2. Summary of significant accounting policies**

*Fiscal year*

The Company's fiscal year is the 52 or 53 weeks ending on the Saturday closest to January 31. The Company's fiscal years ended February 2, 2013 (fiscal 2012), January 28, 2012 (fiscal 2011) and January 29, 2011 (fiscal 2010) were 53, 52 and 52 week years, respectively.

*Use of estimates*

The preparation of financial statements in conformity with U.S. generally accepted accounting principles (GAAP) requires management to make estimates and assumptions that affect the reported amounts of assets and liabilities at the date of the financial statements and the reported amounts of revenues and expenses during the accounting period. Actual results could differ from those estimates.

*Cash and cash equivalents*

Cash and cash equivalents include cash on hand and highly liquid investments with maturities of three months or less from the date of purchase. Cash equivalents include amounts due from third-party credit card receivables because such amounts generally convert to cash within one to three days with little or no default risk.

*Receivables*

Receivables consist principally of amounts receivable from vendors related to allowances earned but not yet received. These receivables are computed based on provisions of the vendor agreements in place and the Company's completed performance. The Company's vendors are primarily U.S.-based producers of consumer products. The Company does not require collateral on its receivables and does not accrue interest. Credit risk with respect to receivables is limited due to the diversity of vendors comprising the Company's vendor base. The Company performs ongoing credit evaluations of its vendors and evaluates the collectability of its receivables based on the length of time the receivable is past due and historical experience. The allowance for receivables totaled \$973 and \$556 as of February 2, 2013 and January 28, 2012, respectively.

*Merchandise inventories*

Merchandise inventories are stated at the lower of cost or market. Cost is determined using the weighted-average cost method and includes costs incurred to purchase and distribute goods. Inventory cost also includes vendor allowances related to co-op advertising, markdowns, and volume discounts. The Company maintains reserves for lower of cost or market and shrinkage.



***Fair value of financial instruments***

The carrying value of cash and cash equivalents, accounts receivable, and accounts payable approximates their estimated fair values due to the short maturities of these instruments. The Company had no outstanding debt as of February 2, 2013 and January 28, 2012.

***Property and equipment***

The Company’s property and equipment are stated at cost net of accumulated depreciation and amortization. Maintenance and repairs are charged to operating expense as incurred. The Company’s assets are depreciated or amortized using the straight-line method, over the shorter of their estimated useful lives or the expected lease term as follows:

Equipment and fixtures . . . . .	3 to 10 years
Leasehold improvements . . . . .	10 years
Electronic equipment and software . . . . .	3 to 5 years

The Company capitalizes costs incurred during the application development stage in developing or obtaining internal use software. These costs are amortized over the estimated useful life of the software.

The Company periodically evaluates whether changes have occurred that would require revision of the remaining useful life of equipment and leasehold improvements or render them not recoverable. If such circumstances arise, the Company uses an estimate of the undiscounted sum of expected future operating cash flows during their holding period to determine whether the long-lived assets are impaired. If the aggregate undiscounted cash flows are less than the carrying amount of the assets, the resulting impairment charges to be recorded are calculated based on the excess of the carrying value of the assets over the fair value of such assets, with the fair value determined based on an estimate of discounted future cash flows.

***Customer loyalty program***

The Company currently operates two loyalty programs, ULTAmate Rewards and The Club at Ulta. The Club at Ulta is a certificate program offering customers reward certificates for free beauty products based on their level of purchases. Customers earn reward certificates to redeem during specific promotional periods throughout the year. ULTAmate Rewards is a points-based program in which customers earn points based on their purchases. Points earned are valid for one year and may be redeemed on any product or select salon service. The Company accrues the cost of anticipated redemptions related to these programs at the time of the initial purchase based on historical experience. The accrued liability related to both of the loyalty programs at February 2, 2013 and January 28, 2012 was \$7,084 and \$6,207, respectively. The cost of these programs, which was \$22,044, \$17,200 and \$12,942 in fiscal 2012, 2011 and 2010, respectively, is included in cost of sales in the statements of income.

***Deferred rent***

Many of the Company’s operating leases contain predetermined fixed increases of the minimum rental rate during the lease. For these leases, the Company recognizes the related rental expense on a straight-line basis over the expected lease term, including cancelable option periods where failure to exercise such options would result in an economic penalty, and records the difference between the amounts charged to expense and the rent paid as deferred rent. The lease term commences on the earlier of the date when the Company becomes legally obligated for rent payments or the date the Company takes possession of the leased space.

As part of many lease agreements, the Company receives construction allowances from landlords for tenant improvements. These leasehold improvements made by the Company are capitalized and amortized over the shorter of their estimated useful lives or the lease term. The construction allowances are recorded as deferred rent and amortized on a straight-line basis over the lease term as a reduction of rent expense.

### ***Revenue recognition***

Net sales include merchandise sales and salon service revenue. Revenue from merchandise sales at stores is recognized at the time of sale, net of estimated returns. The Company provides refunds for product returns within 60 days from the original purchase date. Salon revenue is recognized when services are rendered. Salon service revenue amounted to \$121,357, \$98,479 and \$86,484 for fiscal 2012, 2011 and 2010, respectively. Company coupons and other incentives are recorded as a reduction of net sales. State sales taxes are presented on a net basis as the Company considers itself a pass-through conduit for collecting and remitting state sales tax. E-commerce sales are recorded at the time of shipment.

The Company's gift card sales are deferred and recognized in net sales when the gift card is redeemed for product or services. The Company's gift cards do not expire and do not include service fees that decrease customer balances. The Company has maintained Company-specific, historical data related to its large pool of similar gift card transactions sold and redeemed over a significant time frame. During fiscal 2010, there was a change in facts and circumstances which resulted in the Company recognizing approximately \$2.0 million of gift card breakage income which related primarily to gift cards sold in prior years. The Company recognizes gift card breakage to the extent there is no requirement for remitting balances to governmental agencies under unclaimed property laws. Gift card breakage is recognized over the same performance period, and in the same proportion, that the Company's data has demonstrated that gift cards are redeemed. Gift card breakage is recorded as a decrease in selling, general and administrative expense in the statements of income. Deferred gift card revenue was \$13,364 and \$10,573 at February 2, 2013 and January 28, 2012, respectively, and is included in accrued liabilities – accrued customer liabilities (Note 5).

### ***Vendor allowances***

The Company receives allowances from vendors in the normal course of business including advertising and markdown allowances, purchase volume discounts and rebates, and reimbursement for defective merchandise, and certain selling and display expenses. Substantially all vendor allowances are recorded as a reduction of the vendor's product cost and are recognized in cost of sales as the product is sold.

### ***Advertising***

Advertising expense consists principally of paper, print, and distribution costs related to the Company's advertising circulars. The Company expenses the production and distribution costs related to its advertising circulars in the period the related promotional event occurs. Total advertising costs, exclusive of incentives from vendors and start-up advertising expense, amounted to \$118,365, \$99,446 and \$84,796 for fiscal 2012, 2011 and 2010, respectively. Prepaid advertising costs included in prepaid expenses and other current assets were \$6,251 and \$4,721 as of February 2, 2013 and January 28, 2012, respectively.

### ***Pre-opening expenses***

Non-capital expenditures incurred prior to the grand opening of a new, remodeled or relocated store are charged against earnings as incurred.

### ***Cost of sales***

Cost of sales includes the cost of merchandise sold including all vendor allowances, which are treated as a reduction of merchandise costs; warehousing and distribution costs including labor and related benefits, freight, rent, depreciation and amortization, real estate taxes, utilities, and insurance; shipping and handling costs; store occupancy costs including rent, depreciation and amortization, real estate taxes, utilities, repairs and maintenance, insurance, licenses, and cleaning expenses; salon payroll and benefits; customer loyalty program expense; and shrink and inventory valuation reserves.

### ***Selling, general and administrative expenses***

Selling, general and administrative expenses includes payroll, bonus, and benefit costs for retail and corporate employees; advertising and marketing costs; occupancy costs related to our corporate office facilities; public

company expense including Sarbanes-Oxley compliance expenses; stock-based compensation expense; depreciation and amortization for all assets except those related to our retail and warehouse operations which are included in cost of sales; and legal, finance, information systems and other corporate overhead costs.

***Income taxes***

Deferred income taxes reflect the net tax effect of temporary differences between the carrying amounts of assets and liabilities used for financial reporting purposes and the amounts used for income tax purposes and the amounts reported were derived using the enacted tax rates in effect for the year the differences are expected to reverse.

Income tax benefits related to uncertain tax positions are recognized only when it is more likely than not that the tax position will be sustained on examination by the taxing authorities. The determination is based on the technical merits of the position and presumes that each uncertain tax position will be examined by the relevant taxing authority that has full knowledge of all relevant information. Penalties and interest related to unrecognized tax positions are recorded in income tax expense.

***Share-based compensation***

The Company accounts for share-based compensation in accordance with the Accounting Standards Codification™ (ASC) rules for stock compensation. Share-based compensation cost is measured at grant date, based on the fair value of the award, and is recognized on a straight-line method over the requisite service period for awards expected to vest. The Company recorded stock compensation expense of \$13,375, \$11,605 and \$11,155 for fiscal 2012, 2011 and 2010, respectively (see Note 9, “Share-based awards”).

***Insurance expense***

The Company has insurance programs with third party insurers for employee health, workers compensation and general liability, among others, to limit the Company’s liability exposure. The insurance programs are premium based and include retentions, deductibles and stop loss coverage. Current stop loss coverage is \$150 for employee health claims, \$100 for general liability claims and \$250 for workers compensation claims. The Company makes collateral and premium payments during the plan year and accrues expenses in the event additional premium is due from the Company based on actual claim results.

***Net income per common share***

Basic net income per common share is computed by dividing income available to common stockholders by the weighted-average number of shares of common stock outstanding during the period. Diluted net income per share includes dilutive common stock equivalents, using the treasury stock method (see Note 10, “Net income per common share”).

**3. Property and equipment**

Property and equipment consist of the following:

	<b>February 2, 2013</b>	<b>January 28, 2012</b>
Equipment and fixtures . . . . .	\$ 323,069	\$ 256,479
Leasehold improvements . . . . .	307,624	256,487
Electronic equipment and software . . . . .	169,997	126,790
Construction-in-progress . . . . .	37,700	33,598
	<u>838,390</u>	<u>673,354</u>
Less accumulated depreciation and amortization . . . . .	<u>(355,331)</u>	<u>(296,369)</u>
Property and equipment, net . . . . .	<u>\$ 483,059</u>	<u>\$ 376,985</u>

The Company had no capitalized interest for fiscal 2012 and 2011 as a result of not utilizing the credit facility during the year.

#### 4. Commitments and contingencies

*Leases* — The Company leases retail stores, distribution and office facilities, and certain equipment. Original non-cancelable lease terms range from three to ten years, and store leases generally contain renewal options for additional years. A number of the Company’s store leases provide for contingent rentals based upon sales. Contingent rent amounts were insignificant in fiscal 2012, 2011 and 2010. Total rent expense under operating leases was \$115,755, \$94,175 and \$82,365 for fiscal 2012, 2011 and 2010, respectively. Future minimum lease payments under operating leases as of February 2, 2013, are as follows:

<u>Fiscal year</u>	<u>Operating Leases</u>
2013 .....	\$ 155,542
2014 .....	160,168
2015 .....	153,441
2016 .....	144,991
2017 .....	133,574
2018 and thereafter .....	<u>460,811</u>
Total minimum lease payments .....	<u>\$1,208,527</u>

Included in the operating lease schedule above is \$210,375 of minimum lease payments for stores that will open in fiscal 2013.

*General litigation* — On March 2, 2012, a putative employment class action lawsuit was filed against us and certain unnamed defendants in state court in Los Angeles County, California. On April 12, 2012, the Company removed the case to the United States District Court for the Central District of California. The plaintiff and members of the proposed class are alleged to be (or to have been) non-exempt hourly employees. The suit alleges that Ulta violated various provisions of the California labor laws and failed to provide plaintiff and members of the proposed class with full meal periods, paid rest breaks, certain wages, overtime compensation and premium pay. The suit seeks to recover damages and penalties as a result of these alleged practices. The Company denies plaintiff’s allegations and is vigorously defending the matter.

The Company is also involved in various legal proceedings that are incidental to the conduct of our business. In the opinion of management, the amount of any liability with respect to these proceedings, either individually or in the aggregate, will not be material.

#### 5. Accrued liabilities

Accrued liabilities consist of the following:

	<u>February 2, 2013</u>	<u>January 28, 2012</u>
Accrued vendor liabilities (including accrued property and equipment costs) .....	\$17,254	\$10,868
Accrued customer liabilities .....	21,638	17,978
Accrued payroll, bonus and employee benefits .....	30,418	24,449
Accrued taxes, other .....	9,991	7,619
Other accrued liabilities .....	<u>12,826</u>	<u>13,497</u>
Accrued liabilities .....	<u>\$92,127</u>	<u>\$74,411</u>

## 6. Income taxes

The provision for income taxes consists of the following:

	<u>Fiscal 2012</u>	<u>Fiscal 2011</u>	<u>Fiscal 2010</u>
Current:			
Federal .....	\$ 83,606	\$53,495	\$32,288
State .....	<u>14,832</u>	<u>11,022</u>	<u>7,070</u>
Total current .....	98,438	64,517	39,358
Deferred:			
Federal .....	8,950	10,796	8,076
State .....	<u>(144)</u>	<u>31</u>	<u>(335)</u>
Total deferred .....	<u>8,806</u>	<u>10,827</u>	<u>7,741</u>
Provision for income taxes .....	<u>\$107,244</u>	<u>\$75,344</u>	<u>\$47,099</u>

A reconciliation of the federal statutory rate to the Company's effective tax rate is as follows:

	<u>Fiscal 2012</u>	<u>Fiscal 2011</u>	<u>Fiscal 2010</u>
Federal statutory rate .....	35.0%	35.0%	35.0%
State effective rate, net of federal tax benefit .....	3.4%	3.7%	3.7%
Other .....	<u>(0.1%)</u>	<u>(0.2%)</u>	<u>1.2%</u>
Effective tax rate .....	<u>38.3%</u>	<u>38.5%</u>	<u>39.9%</u>

Significant components of the Company's deferred tax assets and liabilities are as follows:

	<u>February 2, 2013</u>	<u>January 28, 2012</u>
Deferred tax assets:		
Reserves not currently deductible .....	\$ 18,160	\$ 13,207
Employee benefits .....	5,029	4,970
Net operating loss & credit carryforwards .....	208	179
Accrued liabilities .....	3,854	3,499
Inventory valuation .....	<u>1,280</u>	<u>1,570</u>
Total deferred tax assets .....	28,531	23,425
Deferred tax liabilities:		
Property and equipment .....	39,357	32,414
Deferred rent obligation .....	21,638	16,572
Prepaid expenses .....	<u>8,140</u>	<u>6,370</u>
Total deferred tax liabilities .....	<u>69,135</u>	<u>55,356</u>
Net deferred tax liability .....	<u>\$(40,604)</u>	<u>\$(31,931)</u>

At February 2, 2013, the Company had net operating loss carryforwards (NOLs) for federal income tax purposes of approximately \$73, which expire between 2013 and 2014. Based on Internal Revenue Code Section 382 relating to changes in ownership of the Company, utilization of the federal NOLs is subject to an annual limitation of \$440 for federal NOLs created prior to April 1, 1997. At February 2, 2013, the Company had \$281 credit carryforwards for state income tax purposes.

The Company accounts for uncertainty in income taxes in accordance with the ASC rules for income taxes. Based on the Company's best estimate of the potential liability for uncertain tax positions there was no reserve at February 2, 2013 and January 28, 2012.

The Company acknowledges that the amount of unrecognized tax benefits may change in the next twelve months. However, it does not expect the change to have a significant impact on its financial statements. Income tax-related interest and penalties were insignificant for fiscal 2012, 2011 and 2010.

The Company files tax returns in the U.S. Federal and State jurisdictions. The Company is no longer subject to U.S. Federal examinations by the Internal Revenue Services for the years before 2010 and, this applies to examinations by the State authorities before 2008.

## **7. Notes payable**

On October 19, 2011, the Company entered into an Amended and Restated Loan and Security Agreement (the Loan Agreement) with Wells Fargo Bank, National Association, as Administrative Agent, Collateral Agent and a Lender thereunder, Wells Fargo Capital Finance LLC as a Lender, J.P. Morgan Securities LLC as a Lender, JP Morgan Chase Bank, N.A. as a Lender and PNC Bank, National Association, as a Lender. The Loan Agreement amended and restated the Loan and Security Agreement, dated as of August 31, 2010, by and among the lenders. The Loan Agreement extends the maturity of the Company's credit facility to October 2016, provides maximum revolving loans equal to the lesser of \$200,000 or a percentage of eligible owned inventory, contains a \$10,000 subfacility for letters of credit and allows the Company to increase the revolving facility by an additional \$50,000, subject to consent by each lender and other conditions. The Loan Agreement contains a requirement to maintain a minimum amount of excess borrowing availability at all times. Substantially all of the Company's assets are pledged as collateral for outstanding borrowings under the facility. Outstanding borrowings will bear interest at the prime rate or Libor plus 1.50% and the unused line fee is 0.225%. As of February 2, 2013 and January 28, 2012, the Company had no borrowings outstanding under the credit facility and the Company was in compliance with all terms and covenants of the agreement.

On September 5, 2012, the Company entered into Amendment No. 1 to the Amended and Restated Loan and Security Agreement (the Amendment) with the lender group. The Amendment updated certain administrative terms and conditions and provides the Company greater flexibility to take certain corporate actions. There were no changes to the revolving loan amounts available, interest rates, covenants or maturity date under terms of the Loan Agreement.

## **8. Fair value measurements**

The carrying value of cash and cash equivalents, accounts receivable, and accounts payable approximates their estimated fair values due to the short maturities of these instruments.

On February 3, 2008, the Company adopted the ASC rules for fair value measurements and disclosures. The adoption had no impact on the Company's financial statements. The new rules established a three-tier hierarchy for fair value measurements, which prioritizes the inputs used in measuring fair value as follows:

- a. Level 1 — observable inputs such as quoted prices for identical instruments in active markets.
- b. Level 2 — inputs other than quoted prices in active markets that are observable either directly or indirectly through corroboration with observable market data.
- c. Level 3 — unobservable inputs in which there is little or no market data, which would require the Company to develop its own assumptions.

As of February 2, 2013, the Company held financial liabilities of \$2,876 related to its non-qualified deferred compensation plan. The liabilities have been categorized as Level 2 as they are based on third-party reported net asset values which are based primarily on quoted market prices of underlying assets of the funds within the plan.



## 9. Share-based awards

### *Equity Incentive Plans*

The Company has had a number of equity incentive plans over the years. The plans were adopted in order to attract and retain the best available personnel for positions of substantial authority and to provide additional incentive to employees, directors, and consultants to promote the success of the Company's business. Incentive compensation was awarded under the Amended and Restated Restricted Stock Option Plan until April 2002 and under the 2002 Equity Incentive Plan through July 2007, at which time the 2007 Incentive Award Plan was adopted. All of the plans generally provided for the grant of incentive stock options, nonqualified stock options, restricted stock, restricted stock units, stock appreciation rights, and other types of awards to employees, consultants, and directors. Unless provided otherwise by the administrator of the plan, options vested over four years at the rate of 25% per year from the date of grant and most must be exercised within ten years. Options were granted with the exercise price equal to the fair value of the underlying stock on the date of grant.

### *2011 Incentive Award Plan*

In June 2011, the Company adopted the 2011 Incentive Award Plan (the 2011 Plan). The 2011 Plan provides for the grant of incentive stock options, nonqualified stock options, restricted stock, restricted stock units, stock appreciation rights, performance awards, dividend equivalent rights, stock payments, deferred stock and cash-based awards to employees, consultants, and directors. Following its adoption, awards are only being made under the 2011 Plan, and no further awards will be made under any prior plan. The 2011 Plan reserves for the issuance upon grant or exercise of awards up to 4,750 shares of the Company's common stock plus 746 shares that were not issued under prior plans.

The Company measures share-based compensation cost on the grant date, based on the fair value of the award, and recognizes the expense on a straight-line method over the requisite service period for awards expected to vest. The Company estimated the grant date fair value of stock options using a Black-Scholes valuation model using the following weighted-average assumptions:

	<u>Fiscal 2012</u>	<u>Fiscal 2011</u>	<u>Fiscal 2010</u>
Volatility rate . . . . .	53.5%	54.0%	56.9%
Average risk-free interest rate . . . . .	1.2%	1.5%	2.2%
Average expected life (in years) . . . . .	6.3	6.3	5.6
Dividend yield . . . . .	None	None	None

The expected volatility is based on the historical volatility of a peer group of publicly-traded companies. The risk free interest rate is based on the United States Treasury yield curve in effect on the date of grant for the respective expected life of the option. The expected life represents the time the options granted are expected to be outstanding. We have limited historical data related to exercise behavior since our initial public offering on October 30, 2007. As a result, the Company has elected to generally use the shortcut approach to determine the expected life in accordance with the SEC Staff Accounting Bulletin on share-based payments. The Company does not currently pay a regular dividend. The dividend paid in May 2012 was a one-time special cash dividend.

The Company granted 241 stock options during fiscal 2012. The compensation cost that has been charged against income was \$11,967, \$9,731, and \$9,918 for fiscal 2012, 2011, and 2010, respectively. The weighted-average grant date fair value of options granted in fiscal 2012, 2011 and 2010 was \$46.29, \$34.81 and \$13.58, respectively. At February 2, 2013, there was approximately \$26,529 of unrecognized compensation expense related to unvested stock options. The unrecognized compensation expense is expected to be recognized over a weighted-average period of approximately two years.

The total intrinsic value of options exercised was \$138,291, \$86,030 and \$42,118 in fiscal 2012, 2011 and 2010, respectively.

### **Restricted stock awards**

During fiscal 2012 the Company issued restricted stock to certain employees and its board of directors. Employee grants will generally cliff vest after 3 years and director grants will cliff vest within one year. The compensation expense recorded in fiscal 2012 and 2011 was \$1,408 and \$1,874, respectively. At February 2, 2013 and January 28, 2012, unrecognized compensation cost related to restricted stock awards was \$3,989 and \$935, respectively.

A summary of the status of the Company's stock option activity is presented in the following tables:

	<u>Fiscal 2012</u>		<u>Fiscal 2011</u>		<u>Fiscal 2010</u>	
	<u>Shares</u>	<u>Weighted-Average Exercise Price</u>	<u>Shares</u>	<u>Weighted-Average Exercise Price</u>	<u>Shares</u>	<u>Weighted-Average Exercise Price</u>
<b>Common Stock Options Outstanding</b>						
Beginning of year . . . . .	3,559	\$26.46	5,036	\$16.55	5,791	\$11.18
Granted . . . . .	241	89.99	621	66.58	1,521	26.12
Exercised . . . . .	(1,795)	17.57	(1,936)	14.28	(2,033)	8.41
Canceled . . . . .	(198)	46.28	(162)	17.75	(243)	16.73
End of year . . . . .	<u>1,807</u>	<u>\$41.60</u>	<u>3,559</u>	<u>\$26.46</u>	<u>5,036</u>	<u>\$16.55</u>
Exercisable at end of year . . . . .	<u>563</u>	<u>24.85</u>	<u>1,437</u>	<u>\$14.27</u>	<u>2,272</u>	<u>\$12.38</u>
<b>Restricted Stock Outstanding</b>						
Beginning of year . . . . .	22	\$55.72	128	\$24.29	—	\$ —
Granted . . . . .	65	90.18	15	63.38	128	24.29
Vested . . . . .	(5)	66.88	(71)	23.62	—	—
Forfeited . . . . .	(20)	75.30	(50)	23.52	—	—
End of year . . . . .	<u>62</u>	<u>\$81.81</u>	<u>22</u>	<u>\$55.72</u>	<u>128</u>	<u>\$24.29</u>

The Company completed an initial public offering during fiscal 2007 which resulted in compensation expense related to performance based grants of \$425 in fiscal 2010. There was no compensation expense related to performance based grants in 2012 and 2011. No performance-based options were granted during fiscal 2012, 2011 and 2010.

Cash received from option exercises under all share-based payment arrangements for fiscal 2012, 2011 and 2010 was \$31,530, \$27,639 and \$17,100, respectively. The total income tax benefit recognized in the income statement for equity compensation arrangements was \$5,364, \$3,545 and \$3,300 for fiscal 2012, 2011 and 2010, respectively. The actual tax benefit realized for the tax deductions from option exercise and restricted stock vesting of the share-based payment arrangements totaled \$51,886, \$29,439 and \$13,373, respectively, for fiscal 2012, 2011 and 2010.

The following table presents information related to options outstanding and options exercisable at February 2, 2013, under the Company's stock option plans based on ranges of exercise prices:

Options outstanding	Options outstanding			Options exercisable		
	Number of options	Weighted-average remaining contractual life (years)	Weighted-average exercise price	Number of options	Weighted-average remaining contractual life (years)	Weighted-average exercise price
\$ 0.18 - 1.11 .....	11,813	2	\$ 1.11	11,813	2	\$ 1.11
1.12 - 2.62 .....	7,523	2	2.62	7,523	2	2.62
2.63 - 4.12 .....	8,116	4	3.83	8,116	4	3.83
4.13 - 9.18 .....	32,220	7	6.57	13,160	6	6.98
9.19 - 15.81 .....	346,052	6	13.04	255,975	6	12.95
15.82 - 37.85 .....	685,698	8	26.04	184,932	8	26.58
37.86 - 69.96 .....	502,637	9	66.65	81,311	9	68.89
69.97 - 101.53 .....	212,742	10	89.31	—	—	—
End of year .....	<u>1,806,801</u>	<u>8</u>	<u>\$41.60</u>	<u>562,850</u>	<u>7</u>	<u>\$24.85</u>

The aggregate intrinsic value of outstanding and exercisable options as of February 2, 2013 was \$101,965 and \$41,756, respectively. The last reported sale price of our common stock on the NASDAQ Global Select Market on February 2, 2013 was \$97.54 per share.

#### 10. Net income per common share

The following is a reconciliation of net income and the number of shares of common stock used in the computation of net income per basic and diluted share:

	Fiscal year ended		
	February 2, 2013	January 28, 2012	January 29, 2011
Numerator for diluted net income per share — net income . . .	\$172,549	\$120,264	\$71,030
Denominator for basic net income per share — weighted-average common shares .....	63,250	61,259	58,959
Dilutive effect of stock options and non-vested stock .....	<u>1,146</u>	<u>2,075</u>	<u>2,329</u>
Denominator for diluted net income per share .....	64,396	63,334	61,288
Net income per common share:			
Basic .....	\$ 2.73	\$ 1.96	\$ 1.20
Diluted .....	\$ 2.68	\$ 1.90	\$ 1.16

The denominator for diluted net income per common share for fiscal years 2012, 2011 and 2010 exclude 533, 621 and 1,263 employee options, respectively, due to their anti-dilutive effects.

#### 11. Employee benefit plans

The Company provides a 401(k) retirement plan covering all employees who qualify as to age and length of service. The plan is funded through employee contributions and a Company match. In fiscal 2012, 2011 and 2010, the Company match was 100% of the first 3.0%, 2.5% and 2%, respectively, of eligible compensation. For fiscal years 2012, 2011 and 2010, the Company match was \$3,040, \$2,146 and \$1,106, respectively.

On January 1, 2009, the Company established a non-qualified deferred compensation plan for highly compensated employees whose contributions are limited under qualified defined contribution plans. Amounts contributed and deferred under the plan are credited or charged with the performance of investment options offered under the plan as elected by the participants. In the event of bankruptcy, the assets of this plan are

available to satisfy the claims of general creditors. The liability for compensation deferred under the Company's plan included in other long-term liabilities was \$2,876 as of February 2, 2013. The Company manages the risk of changes in the fair value of the liability for deferred compensation by electing to match its liability under the plan with investment vehicles that offset a substantial portion of its exposure. The cash value of the investment vehicles included in deferred compensation plan assets was \$2,866 as of February 2, 2013. As of January 28, 2012 the liability for compensation deferred under the Company's plan included in accrued liabilities was \$1,855 and the corresponding asset included in prepaid expenses and other current assets was \$1,968. The change in presentation of the asset and liability from current to noncurrent in fiscal 2012 is immaterial to the balance sheets ending February 2, 2013 and January 28, 2012. Total expense recorded under this plan is included in selling, general and administrative expenses and was insignificant during fiscal 2012 and 2011.

## 12. Valuation and qualifying accounts

<u>Description</u>	<u>Balance at beginning of period</u>	<u>Charged to costs and expenses</u>	<u>Deductions</u>	<u>Balance at end of period</u>
Fiscal 2012				
Allowance for doubtful accounts . . . . .	\$ 556	\$ 419	\$ (2)(a)	\$ 973
Shrink reserve . . . . .	2,445	8,077	(6,502)	4,020
Inventory — lower of cost or market reserve . . . . .	2,070	1,099	(805)	2,364
Insurance:				
Workers Comp / General Liability Prepaid Asset . . . . .	(2,084)(b)	4,864	(5,180)	(2,400)
Employee Health Care Accrued Liability . . . . .	1,929	26,584	(26,281)	2,232
Fiscal 2011				
Allowance for doubtful accounts . . . . .	\$ 257	\$ 607	\$ (308)(a)	\$ 556
Shrink reserve . . . . .	2,300	5,535	(5,390)	2,445
Inventory — lower of cost or market reserve . . . . .	3,316	870	(2,116)	2,070
Insurance:				
Workers Comp / General Liability Prepaid Asset . . . . .	(970)(b)	4,495	(5,609)	(2,084)
Employee Health Care Accrued Liability . . . . .	1,608	21,036	(20,715)	1,929
Fiscal 2010				
Allowance for doubtful accounts . . . . .	\$ 489	\$ 189	\$ (421)(a)	\$ 257
Shrink reserve . . . . .	1,869	5,191	(4,760)	2,300
Inventory — lower of cost or market reserve . . . . .	4,014	881	(1,579)	3,316
Insurance:				
Workers Comp / General Liability Prepaid Asset . . . . .	(1,181)(b)	4,320	(4,109)	(970)
Employee Health Care Accrued Liability . . . . .	1,579	17,601	(17,572)	1,608

(a) Represents write-off of uncollectible accounts.

(b) Represents prepaid insurance

### 13. Selected quarterly financial data (unaudited)

The following tables set forth the Company's unaudited quarterly results of operations for each of the quarters in fiscal 2012 and fiscal 2011. The Company uses a 13 week (14 week in fourth quarter fiscal 2012) fiscal quarter ending on the last Saturday of the quarter.

	2012				2011			
	First	Second	Third	Fourth	First	Second	Third	Fourth
Net sales . . . . .	\$474,098	\$481,683	\$505,640	\$758,835	\$386,006	\$394,567	\$413,067	\$582,511
Cost of sales . . . . .	303,186	314,058	320,147	499,191	251,101	260,280	263,884	384,046
Gross profit . . . . .	170,912	167,625	185,493	259,644	134,905	134,287	149,183	198,465
Selling, general and administrative expenses . . . . .	110,943	106,040	117,934	153,963	94,615	90,811	100,997	124,235
Pre-opening expenses . . . . .	2,523	4,126	6,252	1,915	1,230	3,816	3,958	983
Operating income . . . . .	57,446	57,459	61,307	103,766	39,060	39,660	44,228	73,247
Interest expense . . . . .	21	104	39	21	173	147	176	91
Income before income taxes . . . . .	57,425	57,355	61,268	103,745	38,887	39,513	44,052	73,156
Income tax expense . . . . .	22,557	22,357	23,117	39,213	15,591	15,608	17,284	26,861
Net income . . . . .	<u>\$ 34,868</u>	<u>\$ 34,998</u>	<u>\$ 38,151</u>	<u>\$ 64,532</u>	<u>\$ 23,296</u>	<u>\$ 23,905</u>	<u>\$ 26,768</u>	<u>\$ 46,295</u>
Net income per common share:								
Basic . . . . .	\$ 0.56	0.55	0.60	\$ 1.01	\$ 0.38	\$ 0.39	\$ 0.44	\$ 0.75
Diluted . . . . .	\$ 0.54	0.54	0.59	\$ 1.00	\$ 0.37	\$ 0.38	\$ 0.42	\$ 0.73

The sum of the quarterly net income per common share may not equal the annual total due to quarterly changes in the weighted average shares and share equivalents outstanding.

### 14. Subsequent event

On February 14, 2013, we announced the resignation of Carl S. Rubin as President, Chief Executive Officer and Director and the appointment of Dennis K. Eck as our Interim Chief Executive Officer until a permanent replacement is identified.

On March 12, 2013, we announced the permanent appointment of Scott M. Settersten as Chief Financial Officer and Assistant Secretary of the Company. Mr. Settersten previously served as Acting Chief Financial Officer and Assistant Secretary since October 18, 2012.

On March 18, 2013, we announced that our Board of Directors had authorized a stock repurchase program pursuant to which the Company may repurchase up to \$150 million of the Company's common stock. The repurchases may be made from time to time in the open market, in privately negotiated transactions, or otherwise, at prices that the Company deems appropriate and subject to market conditions, applicable law and other factors deemed relevant in the Company's sole discretion.

## Exhibits

<u>Exhibit Number</u>	<u>Description of document</u>	<u>Filed Herewith</u>	<u>Form</u>	<u>Incorporated by Reference</u>		
				<u>Exhibit Number</u>	<u>File Number</u>	<u>Filing Date</u>
3.1	Amended and Restated Certificate of Incorporation		S-1	3.1	333-144405	8/17/2007
3.2	Amended and Restated Bylaws		S-1	3.2	333-144405	8/17/2007
4.1	Specimen Common Stock Certificate		S-1	4.1	333-144405	10/11/2007
4.2	Third Amended and Restated Registration Rights Agreement between Ulta Salon, Cosmetics & Fragrance, Inc. and the stockholders party thereto		S-1	4.2	333-144405	8/17/2007
4.3	Stockholder Rights Agreement		S-1	4.4	333-144405	8/17/2007
10.1	Ulta Salon, Cosmetics & Fragrance, Inc. Second Amended and Restated Restricted Stock Option Plan		S-1	10.7	333-144405	8/17/2007
10.1(a)	Amendment to Ulta Salon, Cosmetics & Fragrance, Inc. Second Amended and Restated Restricted Stock Option Plan		S-1	10.7(a)	333-144405	8/17/2007
10.2	Ulta Salon, Cosmetics & Fragrance, Inc. 2002 Equity Incentive Plan		S-1	10.9	333-144405	8/17/2007
10.3	Ulta Salon, Cosmetics & Fragrance, Inc. 2007 Incentive Award Plan		S-1	10.10	333-144405	9/27/2007
10.4	Ulta Salon, Cosmetics & Fragrance, Inc. 2011 Incentive Award Plan		DEF 14-A	Appendix A	001-33764	5/5/2011
10.5	Ulta Salon, Cosmetics & Fragrance, Inc. Nonqualified Deferred Compensation Plan		10-K	10.17	001-33764	4/2/2009
10.6	Employment Agreement, dated as of April 12, 2010, by and between Ulta Salon, Cosmetics & Fragrance, Inc. and Carl Rubin.		8-K	10.2	001-33764	4/27/2010
10.7	First Amendment to Carl Rubin Employment Agreement, dated April 28, 2010.		10-Q	10.2(a)	001-33764	6/3/2010
10.8	Restricted Stock Award Agreement, dated May 10, 2010, by and between Ulta Salon, Cosmetics & Fragrance, Inc. and Carl Rubin.		8-K	10.3	001-33764	4/27/2010
10.9	Option Agreement, dated May 10, 2010, by and between Ulta Salon, Cosmetics & Fragrance, Inc. and Carl Rubin.		8-K	10.4	001-33764	4/27/2010



<u>Exhibit Number</u>	<u>Description of document</u>	<u>Filed Herewith</u>	<u>Form</u>	<u>Incorporated by Reference</u>		
				<u>Exhibit Number</u>	<u>File Number</u>	<u>Filing Date</u>
10.10	Amended and Restated Loan and Security Agreement, dated October 19, 2011, by and among Ulta Salon, Cosmetics & Fragrance, Inc., Wells Fargo Bank, National Association, Wells Fargo Capital Finance, LLC, J.P. Morgan Securities LLC, JPMorgan Chase Bank, N.A. and PNC Bank, National Association		8-K	10.1	001-33764	10/25/2011
10.11	Amendment No. 1 to Amended and Restated Loan and Security Agreement dated as of September 5, 2012, by and among Ulta Salon, Cosmetics and Fragrance Inc., Wells Fargo Bank, National Association, Wells Fargo Capital Finance, LLC, J.P. Morgan Securities LLC, JPMorgan Chase Bank, N.A. and PNC Bank, National Association		10-Q	10.1	001-33764	9/6/2012
10.12	Form of Retention and Severance Agreement		8-K	10.1	001-33764	3/13/2013
14.1	Code of Business Conduct	X				
23.1	Consent of Independent Registered Public Accounting Firm	X				
31.1	Certification of the Chief Executive Officer pursuant to Rules 13a-14(a) and 15d-14(a) of the Securities Exchange Act of 1934, as adopted pursuant to section 302 of the Sarbanes-Oxley Act of 2002	X				
31.2	Certification of the Chief Financial Officer pursuant to Rules 13a-14(a) and 15d-14(a) of the Securities Exchange Act of 1934, as adopted pursuant to section 302 of the Sarbanes-Oxley Act of 2002	X				
32.1	Certification of the Chief Executive Officer and Chief Financial Officer pursuant to 18 U.S.C. Section 1350, as adopted pursuant to Section 906 of the Sarbanes-Oxley Act of 2002	X				
101.INS **	XBRL Instance	X				
101.SCH**	XBRL Taxonomy Extension Schema	X				

<u>Exhibit Number</u>	<u>Description of document</u>	<u>Filed Herewith</u>	<u>Form</u>	<u>Incorporated by Reference</u>		
				<u>Exhibit Number</u>	<u>File Number</u>	<u>Filing Date</u>
101.CAL **	XBRL Taxonomy Extension Calculation	X				
101.LAB **	XBRL Taxonomy Extension Labels	X				
101.PRE **	XBRL Taxonomy Extension Presentation	X				
101.DEF **	XBRL Taxonomy Extension Definition	X				

\* Confidential treatment has been requested with respect to certain portions of this Exhibit pursuant to Rule 24b-2 under the Securities Exchange Act. Omitted portions have been filed separately with the Securities and Exchange Commission.

\*\* In accordance with Rule 406T of Regulation S-T, the Interactive Data Files in Exhibit 101 to the Annual Report on Form 10-K shall be deemed “furnished” and not “filed.”

## SIGNATURES

Pursuant to the requirements of Section 13 or 15(d) of the Securities Exchange Act of 1934, the registrant has duly caused this report to be signed on its behalf by the undersigned, thereunto duly authorized, in the City of Chicago, State of Illinois, on April 3, 2013.

ULTA SALON, COSMETICS & FRAGRANCE, INC.

By: /s/ Scott M. Settersten

Scott M. Settersten  
Chief Financial Officer and Assistant Secretary

Pursuant to the requirements of the Securities Exchange Act of 1934, this report has been signed below by the following persons on behalf of the registrant and in the capacities and on the dates indicated:

<u>Signatures</u>	<u>Title</u>	<u>Date</u>
<u>/s/ Dennis K. Eck</u> Dennis K. Eck	Interim Chief Executive Officer and Chairman of the Board of Directors (Principal Executive Officer)	April 3, 2013
<u>/s/ Scott M. Settersten</u> Scott M. Settersten	Chief Financial Officer and Assistant Secretary (Principal Financial and Accounting Officer)	April 3, 2013
<u>/s/ Robert F. DiRomualdo</u> Robert F. DiRomualdo	Director	April 3, 2013
<u>/s/ Catherine Halligan</u> Catherine Halligan	Director	April 3, 2013
<u>/s/ Charles Heilbronn</u> Charles Heilbronn	Director	April 3, 2013
<u>/s/ Michael R. MacDonald</u> Michael R. MacDonald	Director	April 3, 2013
<u>/s/ Lorna E. Nagler</u> Lorna E. Nagler	Director	April 3, 2013
<u>/s/ Charles J. Philippin</u> Charles J. Philippin	Director	April 3, 2013
<u>/s/ Kenneth T. Stevens</u> Kenneth T. Stevens	Director	April 3, 2013

## Executive Officers

Dennis K. Eck

Interim Chief Executive Officer and Chairman of the Board of Directors

Scott M. Settersten

Chief Financial Officer

Robert S. Guttman

Senior Vice President, General Counsel & Secretary

## Board of Directors

Dennis K. Eck (2)

Chairman of the Board of Directors

Robert F. DiRomualdo (1)

Member of Board of Directors

Catherine Halligan (1)

Member of Board of Directors

Charles Heilbronn (2†) (3)

Member of Board of Directors

Lorna E. Nagler (2) (3)

Member of Board of Directors

Michael R. MacDonald (2)

Member of Board of Directors

Charles J. Philippin (1†)

Member of Board of Directors

Kenneth T. Stevens (1) (3†)

Member of Board of Directors

(1) Audit Committee

(2) Compensation Committee

(3) Nominating and Corporate Governance Committee

(†) Committee Chair

## Company Headquarters

ULTA Salon, Cosmetics & Fragrance, Inc.

1000 Remington Boulevard

Suite 120

Bolingbrook, IL 60440

630.410.4800

[www.ulta.com](http://www.ulta.com)

## Annual Meeting

The Annual Meeting of Stockholders will be held

at 10:00 am on Thursday, June 6, 2013, at:

ULTA Beauty Company Headquarters

1000 Remington Boulevard

Suite 120

Bolingbrook, IL 60440

## Transfer Agent and Registrar

American Stock Transfer & Trust Company

Operations Center

6201 – 15th Avenue

Brooklyn, NY 11219

800.937.5449

## Stockholder Inquiries

ULTA Investor Relations

1000 Remington Boulevard

Suite 120

Bolingbrook, IL 60440

630.410.4627

[InvestorRelations@ulta.com](mailto:InvestorRelations@ulta.com)

## Independent Registered Public Accounting Firm

Ernst & Young LLP

Chicago, IL

## Corporate and Securities Counsel

Latham & Watkins LLP

Chicago, IL

The Company has filed with the Securities and Exchange Commission, as Exhibit 31 to its Annual Report on Form 10-K for fiscal year 2012, the Chief Executive Officer and Chief Financial Officer certifications as required by Section 302 of the Sarbanes-Oxley Act of 2002.

## Safe Harbor Language

Portions of this report may contain “forward-looking statements” within the meaning of Section 21E of the Securities and Exchange Act of 1934, as amended, and the safe harbor provisions of the Private Securities Litigation Reform Act of 1995, which reflect our current views with respect to, among other things, future events and financial performance. Any forward-looking statements contained in this report are based upon our historical performance and on current plans, estimates and expectations. Such forward-looking statements are subject to various risks and uncertainties, including risk factors contained in our Form 10-K for the year ended February 2, 2013 which is on file with the Securities and Exchange Commission and available at [www.sec.gov](http://www.sec.gov) and at [www.ulta.com](http://www.ulta.com). We undertake no obligation to update any forward-looking statements to reflect events or circumstances after the date of such statements.



PRESTIGE FRAGRANCES



THE MEN'S SHOP



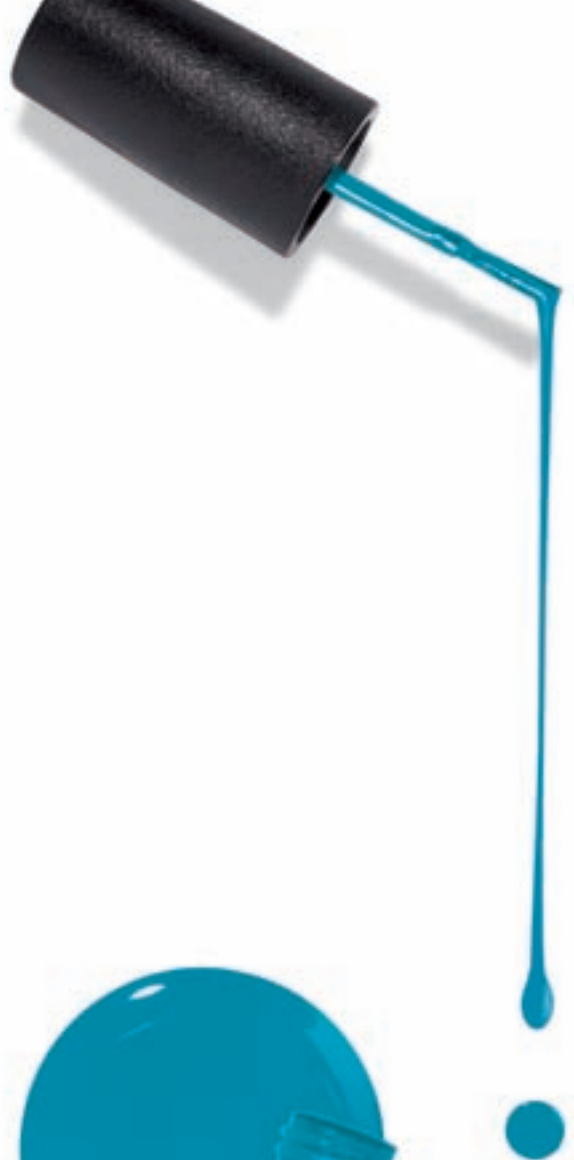


**SALON STYLING TOOLS**



**THE SALON**





**ULTA**<sup>®</sup>  
B E A U T Y