

Pfizer Oncology Analyst and Investor Session

Andy Schmeltz
Chris Boshoff
Jeff Settleman

April 9th, 2021



Forward-Looking Statements and Other Notices

- Our discussions during this presentation include forward-looking statements about our anticipated operating and financial performance, business plans and prospects, expectations for our product pipeline, in-line products and product candidates, including anticipated regulatory submissions, data read-outs, study starts, approvals, revenue contribution, growth, performance, timing of exclusivity and potential benefits, and our efforts to respond to COVID-19, including our development of a vaccine to help prevent COVID-19, that are each subject to substantial risks and uncertainties that could cause actual results to differ materially from those expressed or implied by such statements. Among other things, statements regarding revenue and earnings per share growth; the development or commercial potential of our product pipeline, in-line products, product candidates and additional indications, including expected clinical trial protocols, the timing of the initiation and progress of clinical trials and data read-outs from trials; the timing for the submission of applications for and receipt of regulatory approvals; expected breakthrough, best or first-in-class status, blockbuster status of our medicines; and the impact of anticipated improvements to our clinical operation performance are forward-looking and are estimates that are subject to change and clinical trial and regulatory success. These statements are subject to risks, uncertainties and other factors that may cause actual results to differ materially from past results, future plans and projected future results. Additional information regarding these and other factors can be found in Pfizer's Annual Report on Form 10-K for the fiscal year ended December 31, 2020 and in our subsequent reports on Form 10-Q, including in the sections thereof captioned "Risk Factors" and "Forward-Looking Information and Factors That May Affect Future Results", as well as in our subsequent reports on Form 8-K, all of which are filed with the U.S. Securities and Exchange Commission and available at www.sec.gov and www.pfizer.com. Potential risks and uncertainties also include the impact of COVID-19 on our sales and operations, including impacts on employees, manufacturing, supply chain, marketing, research and development and clinical trials.
- The forward-looking statements in these presentations speak only as of the original date of the presentation and we undertake no obligation to update or revise any of these statements. Today's discussions and presentations are intended for the investor community only; they are not intended to promote the products referenced herein or otherwise influence healthcare prescribing decisions. All trademarks in today's presentations are the property of their respective owners.

Pfizer Oncology Leadership



Andy Schmeltz
Global President

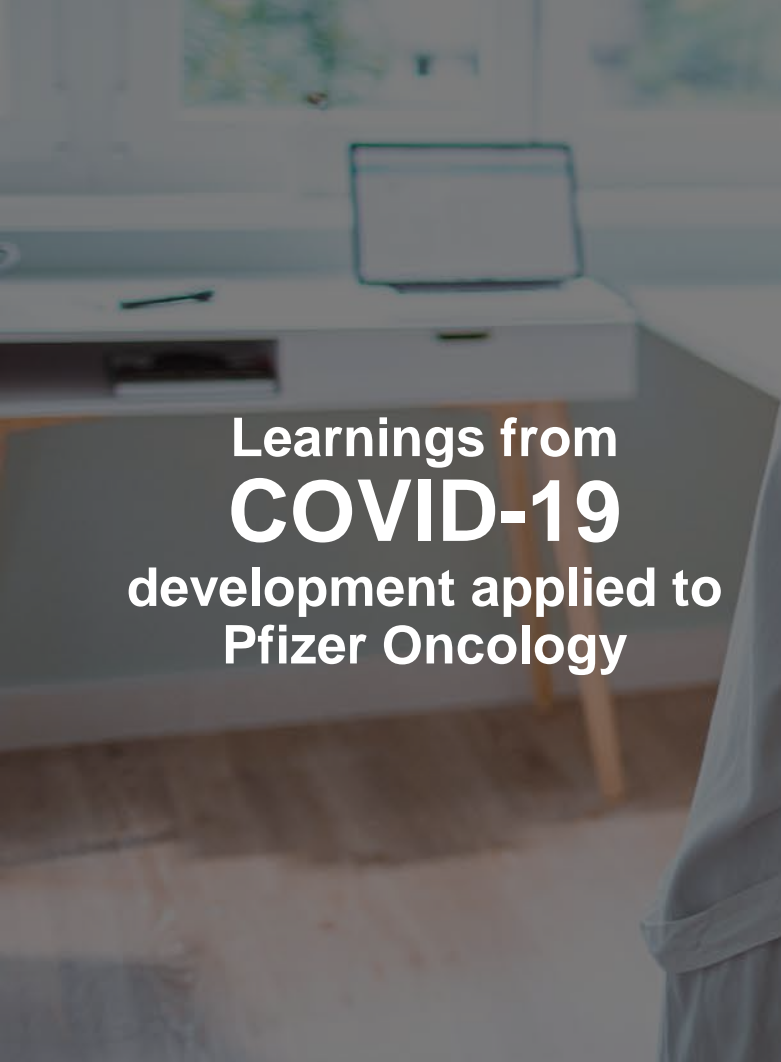


Chris Boshoff
Chief Development Officer



Jeff Settleman
Chief Scientific Officer

Objectives For Today's Session



Learnings from
COVID-19
development applied to
Pfizer Oncology



Highlights of select
clinical programs
where learnings are applied



How this drives
opportunity
for patients and the future
of Pfizer Oncology

Pfizer Oncology Today

Inline portfolio of **24 cancer medicines** and biosimilars across **30 types of cancer...**

... reaching over 716,000 people in 2020

\$10.9B

2020
Revenue

275+

Clinical trials
currently underway

21%G

Operational revenue
growth in 2020
9% growth for IBRANCE
36% growth for remaining portfolio

6

New molecular entities
with first-in-patient starts
since September 2020

3

Registrational trial
starts to-date
in 2021

Pfizer, Partnering with BioNTech, Delivered the First COVID-19 Vaccine Authorized by FDA for Emergency Use by Applying Lightspeed Concepts

COVID-19 vaccine development in 2020 drove innovation and efficiency



35 Days

First Subject First Visit to 20K Dosed



248 Days

BioNTech Collaboration
Announcement to FDA EUA
Submission

Pfizer Oncology is continuing to push the norm to deliver breakthroughs for patients



Parallel Track Development



Optimized Cycles Times



Digital Solutions

Pfizer Oncology is applying the Lightspeed concepts and learnings from the COVID-19 vaccine to transform the way we bring medicines to market

Today, We Highlight 3 Programs that Exemplify our Vision for Accelerated Delivery of Breakthroughs...

Recent



ALK+ Lung Cancer

Current



Multiple Myeloma

Future



Next Gen Breast Cancer Franchise

Today, We Highlight 3 Programs that Exemplify our Vision for Accelerated Delivery of Breakthroughs...

Recent



ALK+ Lung Cancer

Current



Multiple Myeloma

Future

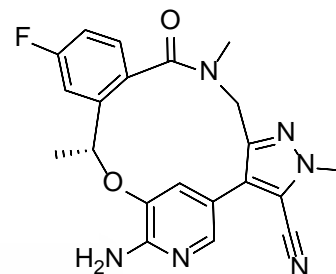


Next Gen Breast Cancer Franchise

LORBRENA* (lorlatinib) – Discovered by Pfizer Using State-of-the-Art Medicine Design

US LOE, 2033

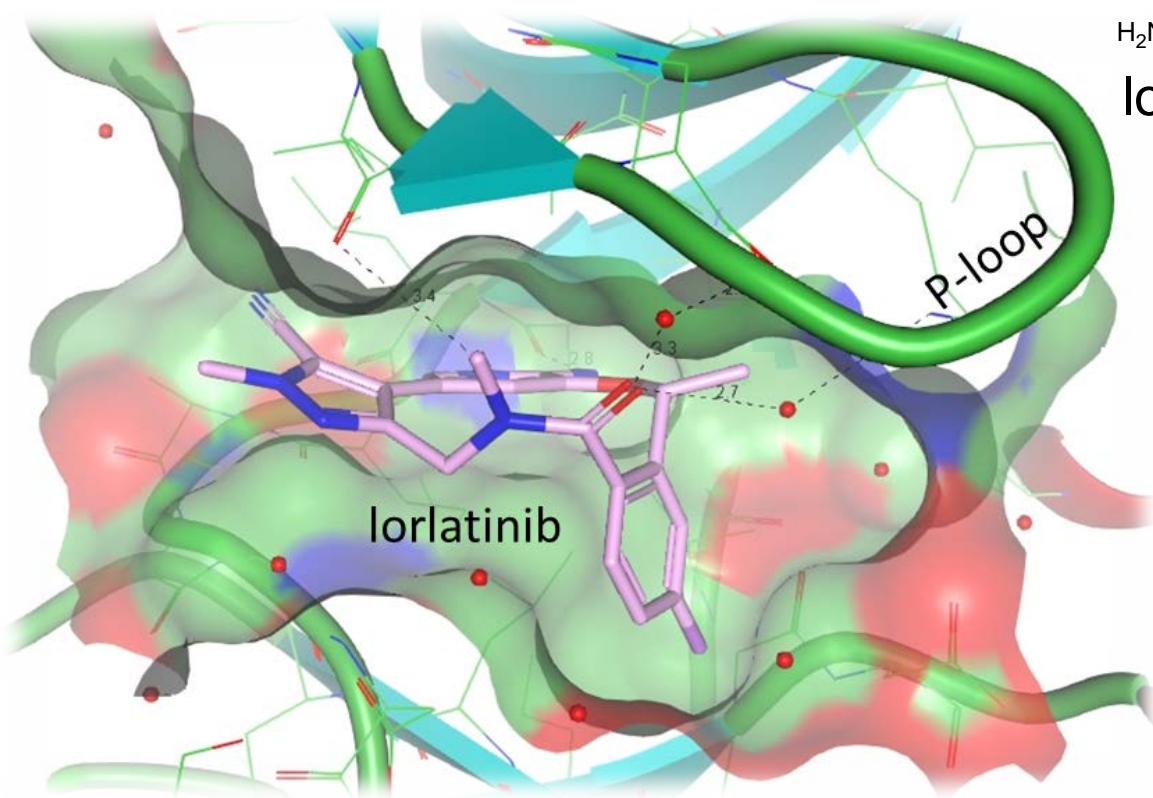
Features made possible biochemically with a novel, macro-cyclic structure unlike any other next-generation ALK TKIs



lorlatinib

Lorlatinib is designed to achieve potency against all known ALK inhibitor resistance mutations...

		Cellular ALK Phosphorylation Mean IC ₅₀ (nM)			
IC ₅₀ < 100 nM					
IC ₅₀ ≥ 100 < 200 nM					
IC ₅₀ ≥ 200 nM					
Mutation Status	Cell Line (engineered)	lorlatinib	crizotinib	ceritinib	allectinib
EML4-ALK v1	NIH3T3	1.3	80	NA	62
	BaF3	3.6	90	41	24
EML4-ALK L1196M	NIH3T3	21	843	NA	250
	BaF3	43	1154	70	113
EML4-ALK G1269A	NIH3T3	15	605	NA	NA
	BaF3	80	689	134	112
EML4-ALK G1202R	NIH3T3	77	1,003	>1,000	>10,000
	BaF3	113	562	549	362
EML4-ALK I1151Tins	NIH3T3	38	1,268	1,066	1,770
	BaF3	50	902	296	126
EML4-ALK S1206Y	NIH3T3	4.2	626	NA	NA
	BaF3	3.2	152	60	29
EML4-ALK C1156Y	NIH3T3	1.6	478	NA	NA
	BaF3	15	406	177	21
EML4-ALK F1174L	NIH3T3	0.2	165	NA	NA
	BaF3	4.0	150	161	26



LORBRENA – Discovery to Approval at Remarkable Speed



Under 5 years in clinical development

Less than half of our previous median, and significantly shorter than the industry median of the day.

2014: Lorlatinib First in Human

2018: FDA approval in 2L ALK+ NSCLC

Aug. 2020: Ph3 CROWN Study TLR in 1L ALK+ NSCLC

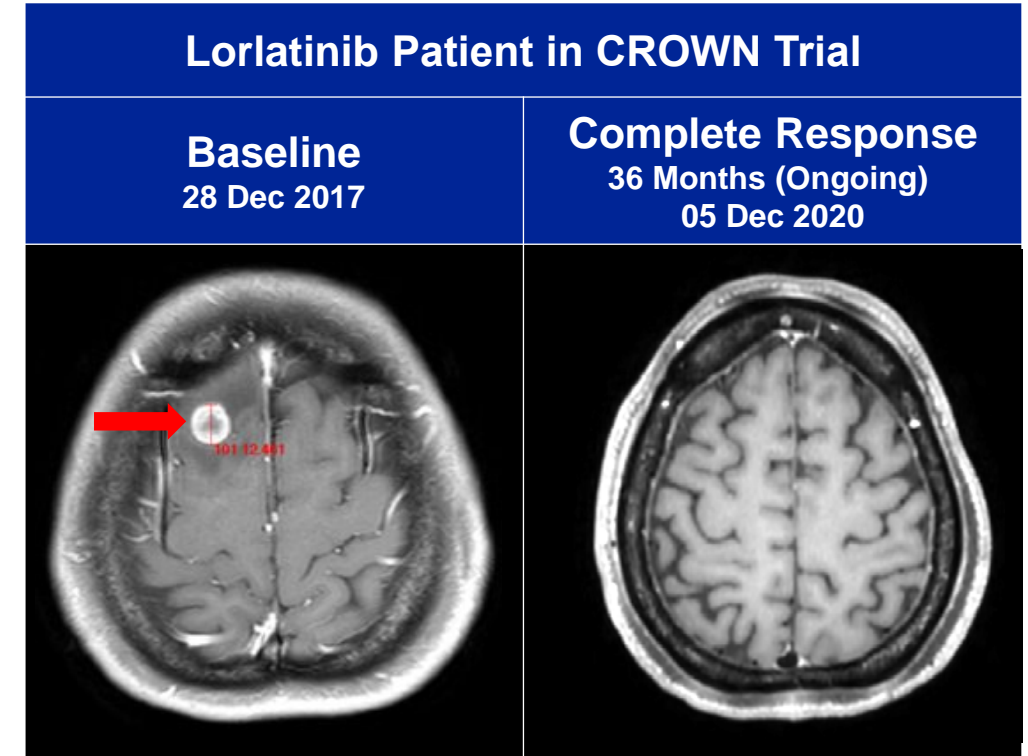
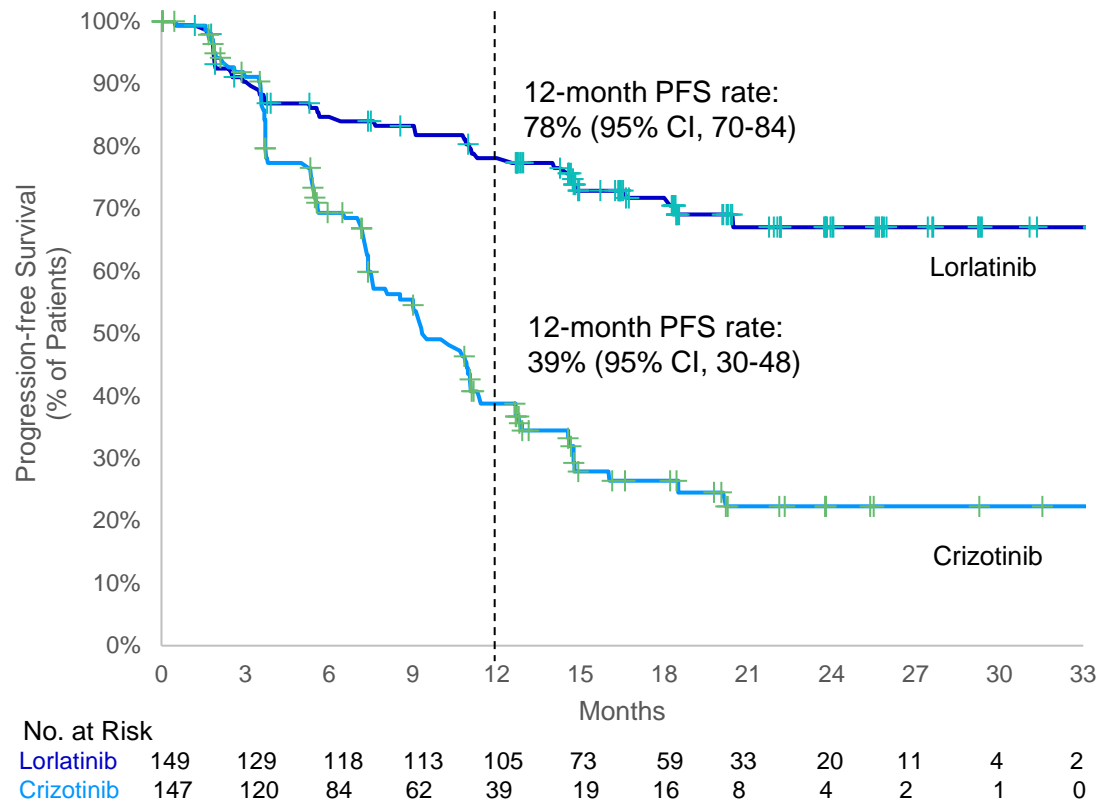
March 2021: FDA Approval in 1L ALK+ NSCLC

1L sNDA reviewed under RTOR*, the second for Pfizer Oncology

Received FDA approval in 1L NSCLC this past March, representing **one of Pfizer Oncology's fastest timelines** from data read-out to regulatory approval in 7 months

1L application is Pfizer's first regulatory submission under Project ORBIS**, an FDA initiative to provide patients earlier access to medicines through concurrent submissions and collaborative review with health authorities in other countries

CROWN, Phase 3 Randomized Study of Lorlatinib vs. Crizotinib; Previously Untreated Advanced ALK-Positive NSCLC



High Impact Results: 72% Reduction in Risk of
Progression or Death vs. Crizotinib
HR 0.28 (0.19-0.41), $P < 0.001$

Today, We Highlight 3 Programs that Exemplify our Vision for Accelerated Delivery of Breakthroughs...

Recent



ALK+ Lung Cancer

Current



Multiple Myeloma

Future

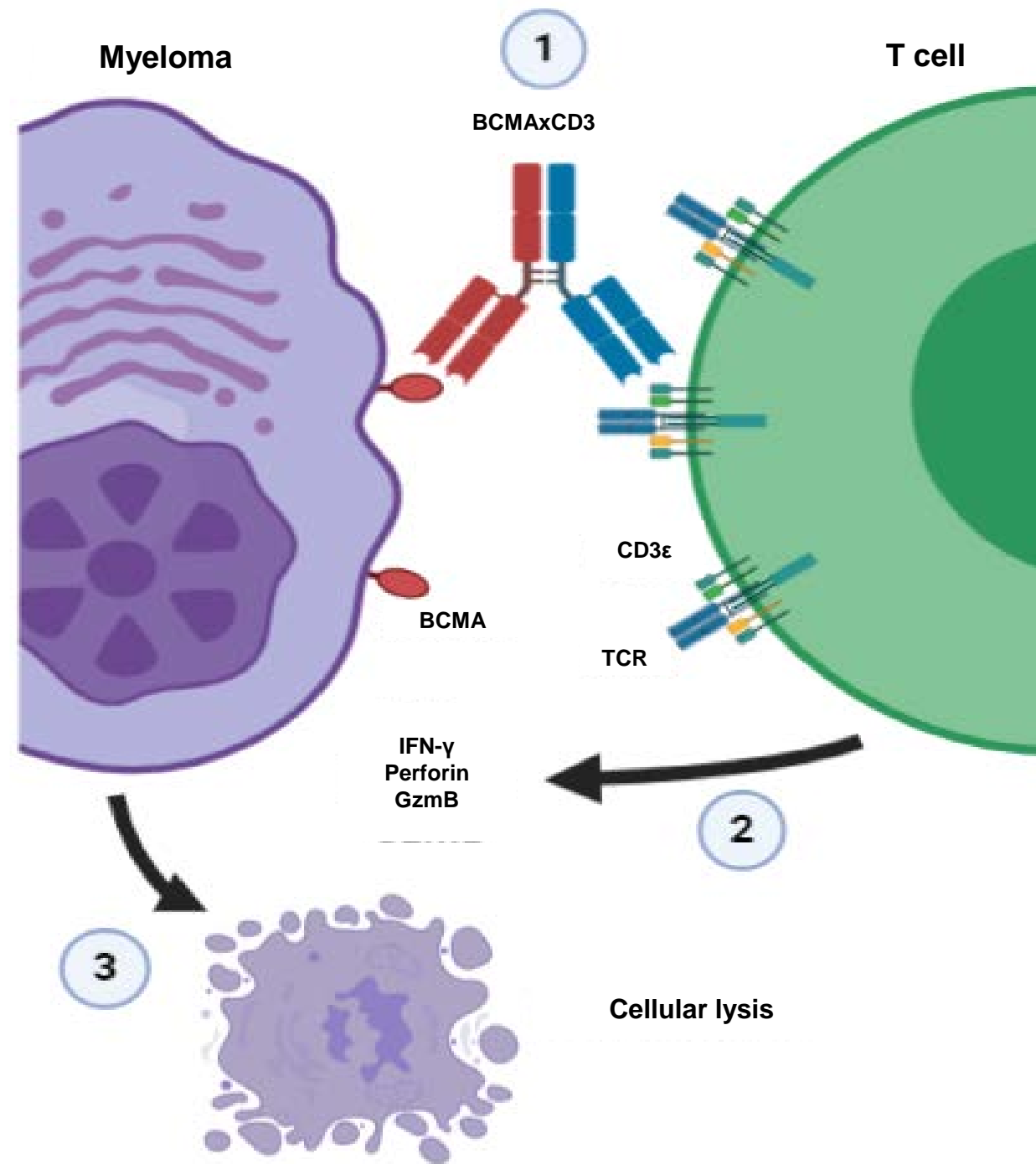


Next Gen Breast Cancer Franchise

Multiple Myeloma - Significant Unmet Medical Need

Only 50% of patients with MM will survive past 5 years with current standard of care

Type & Incidence (2019 - US, EU5, & JP)	% Progress	% Deaths before next LOT
59K Newly Diagnosed	77%-88%	11%-17%
32K Double Class Relapsed	85%-90%	17%-23%
17K Triple Class Refractory	90%-93%	31%-37%



Elranatamab (PF-06863135): Promising Early Activity in Phase 1

Achieved Fast Track Designation January 2021, EMA PRIME designation March 2021

Best Overall Response from MagnetisMM-1	215 µg/kg	360 µg/kg	600 µg/kg	1000 µg/kg	Total
Responders / # Evaluable	3/4	3/4	4/6	5*/6	15*/20
Objective Response Rate	75%	75%	67%	83%¹	75%¹
Stringent Complete Response ¹ (sCR) / Complete Response ² (CR) Rate	50%	25%	33%	17% ¹	30% ¹
Cytokine Release Syndrome (CRS)	Grade 1-2	Grade 1-2	Grade 1-2	Grade 1-2	

MagnetisMM-3, Pivotal Phase Trial

Patient population¹

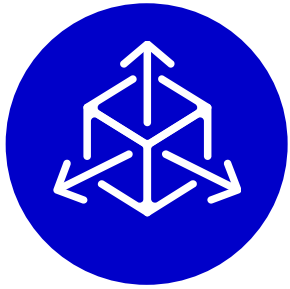
- Refractory to All 3:
 - Immunomodulatory imide drugs (IMiDs)
 - Proteasome inhibitor (PI)
 - Anti-CD38



n=150
Elranatamab
monotherapy

Primary endpoint:
ORR per BICR

Elranatamab – Applying Lightspeed Concepts



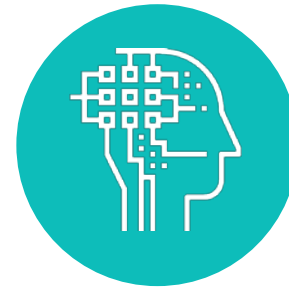
Real-Time

Real-time data monitoring of blinded independent central review (BICR)



Accelerated

Acceleration of commercial ready product supply by leveraging internal resources



Machine Learning

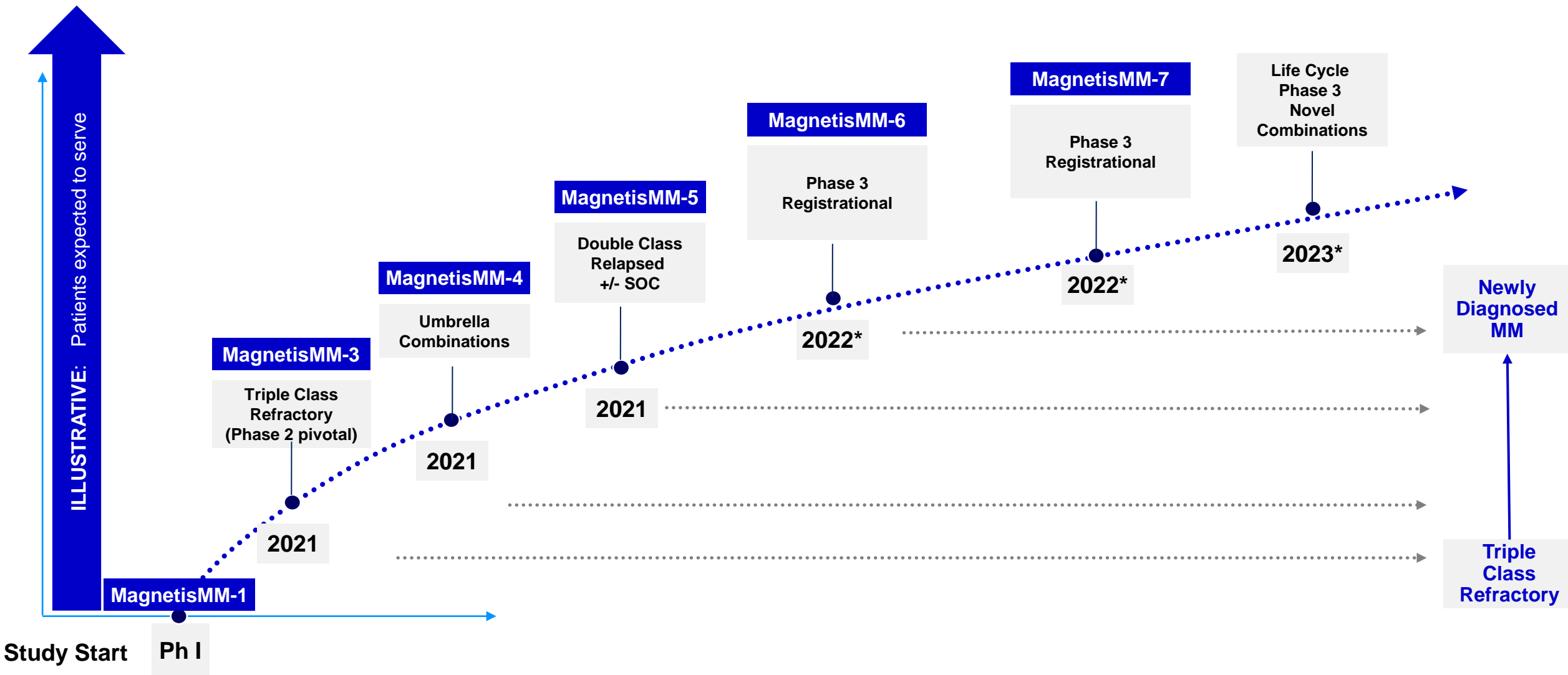
Data review and analysis powered by machine learning technologies



<30 Days

Final protocol to first subject dosed achieved within 30 days

Designed to Serve More Patients



Today, We Highlight 3 Programs that Exemplify our Vision for Accelerated Delivery of Breakthroughs ...

Recent



ALK+ Lung Cancer

Current



Multiple Myeloma

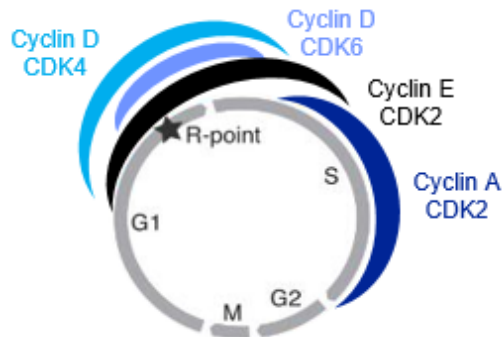
Future



Next Gen Breast Cancer Franchise

Applying Lightspeed Concepts to Exciting Breast Cancer Pipeline – Beyond palbociclib

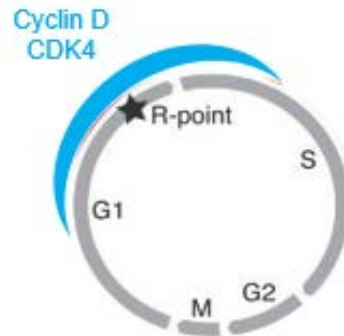
CDK2/4/6



Addressing palbociclib refractory/relapse disease

Expansion opportunities in triple negative breast and ovarian cancers

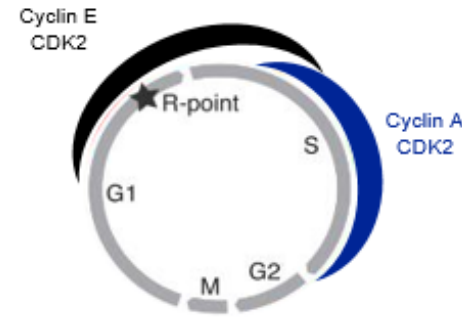
CDK4-selective



Potential improvement in efficacy & safety over palbociclib in HR+ breast cancer

Combination opportunities in lung, colorectal and prostate cancer

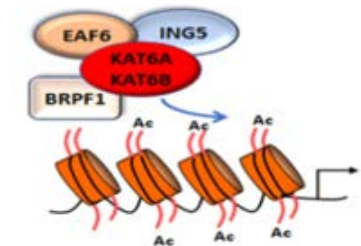
CDK2-selective



Overcoming palbociclib resistance by combining with palbociclib or CDK4-selective

Combination potential with SOC, targeted therapies and IO in multiple tumor types

KAT6a



Overcoming resistance-causing ER mutations in HR+ breast cancer

Potential first-in-class with favorable safety profile--mechanistic synergy with palbociclib

Expand CDK inhibition as a backbone

CDK class has potential to persist as a SOC and can potentially further transform HR+ BC across treatment continuum

CDK2/4/6, CDK2, CDK4

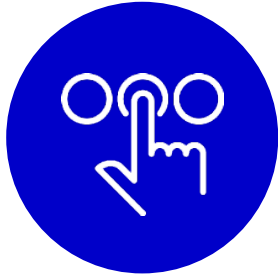
Overcome endocrine therapy resistance

Innovative approaches needed to overcome limitations of current ET, including endocrine resistance

KAT6A

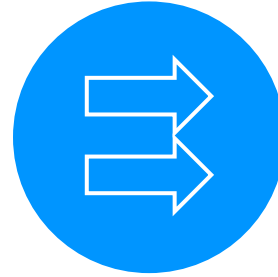
All 4 programs currently in Ph1 clinical development

Next Generation Breast Cancer Franchise - Acceleration Opportunities



Multiple shots on goal

represent both complementary and overlapping opportunities



Parallel development and strategic resource optimization

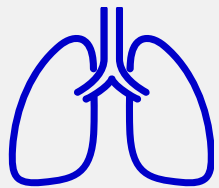
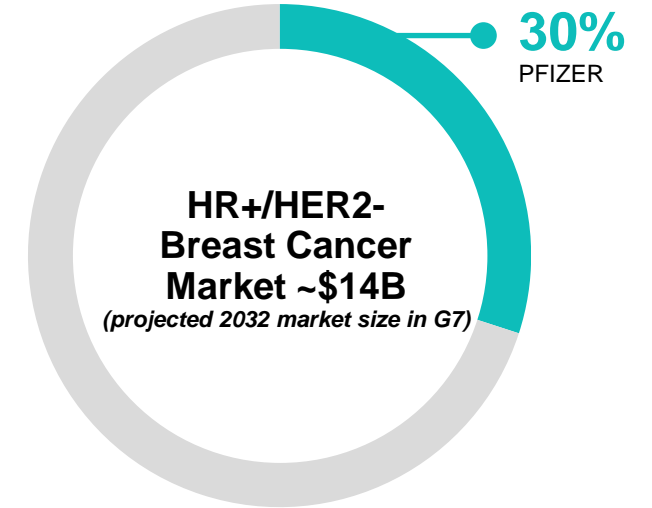
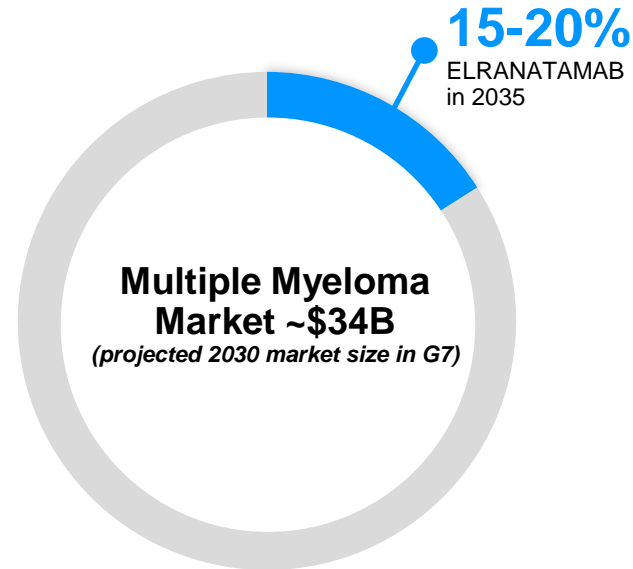
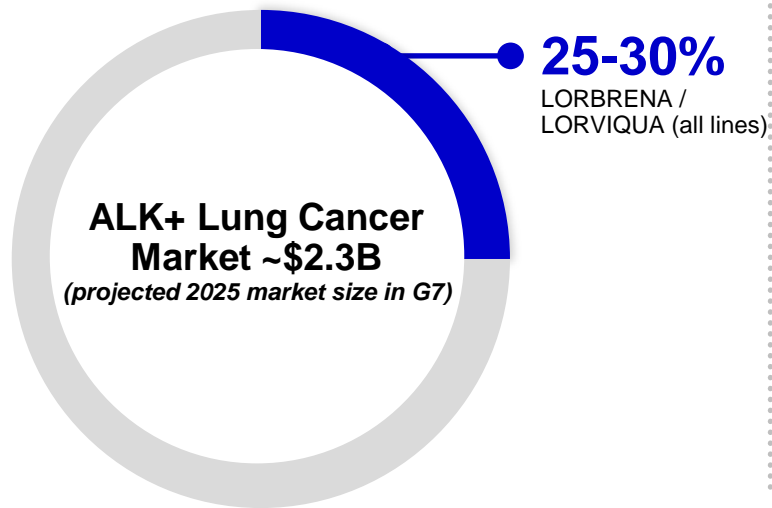
across programs informs all programs with learnings



Efficiently drive acceleration or de-prioritization

via umbrella studies and clear go/no-go criteria

Moving at Lightspeed to Deliver Breakthroughs



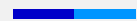
LORBRENA / CROWN
ALK+ Lung Cancer



Elranatamab / MagnetisMM
Multiple Myeloma



**Next Gen Breast
Cancer Franchise**



Q&A





Thank You

