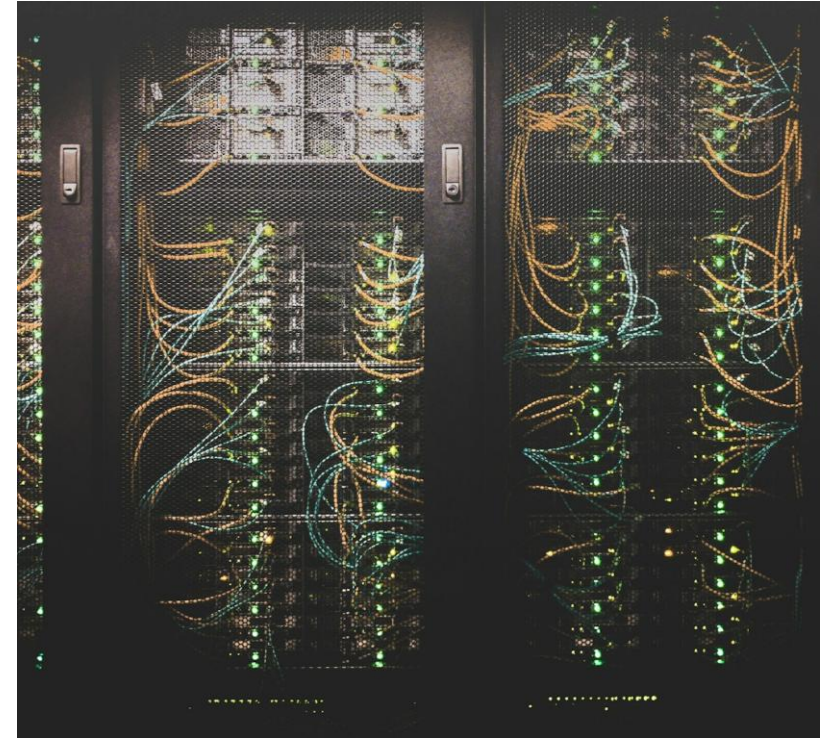


Ameren Missouri Large Load Customer Rate Plan

Enabling economic development and maintaining just and reasonable rates

- **On Nov. 24, 2025, MoPSC approved rate structure for large load customers**
 - Applicable to customers requesting 75+ MW
 - Establishes Large Load Customer Rate Plan with current base rate of (~\$0.062/kWh)²
 - Includes earnings sharing mechanism when earned ROE exceeds specified allowed ROE (65% for customers) and protections in case of reduced revenues from force majeure event
- **Requires Electric Service Agreement (ESA) specifying terms and conditions²**
 - Service term of 12 years after ramp
 - Minimum demand charge of 80% of contracted capacity
 - Customer exit terms, including 2-year advance notice of termination and exit fees equivalent to the minimum monthly bill for the lesser of the remaining length of the ESA term or 5 years
 - Customer credit requirements and collateral equal to 2 years of minimum monthly bills
- **Large Load customers can support renewables, battery storage, or nuclear to advance their clean energy goals through incremental payments, which will be tracked to offset costs for other customers**



¹ Large Primary Service rate as estimated for all-in per kWh rate effective June 1, 2025, excluding applicable riders. Actual rate is dependent upon customer load factor, among other factors.

² Additional details on terms and conditions available in the large load Order approved by the MoPSC in Docket No. ET-2025-0184.