



---

## **1.5 Tesla and 3 Tesla Magnetic Resonance Imaging (MRI) Guidelines for the Senza System (IPG1000 and IPG1500)**

---

! USA

**R<sub>x</sub>**  
ONLY

**NEVRO CORP.**

**All questions or concerns about Nevro products should be forwarded to:**



**Nevro Corp.  
1800 Bridge Parkway  
Redwood City, CA 94065 USA**

**Tel: +1.650.251.0005**

**Fax: +1.650.251.9415**

**info@nevro.com**



**MDSS GMBH  
Schiffgraben 41  
D-30175 Hannover,  
Germany**

**Australian Sponsor  
Emergo Australia  
Level 20, Tower II, Darling Park  
201 Sussex Street, Sydney, NSW 2000  
Australia**

**© Copyright 2018, Nevro Corp. All rights reserved.**

No part of this publication may be reproduced, transmitted, transcribed, stored in a retrieval system or translated into any language or computer language, in any form or by any means, including, but not limited to, electronic, magnetic, optical, chemical, manual, or otherwise without written permission of Nevro Corp.

**Registered Trademarks:** Nevro, Senza, HF10, and the Nevro logo are trademarks of Nevro Corp.

CE Mark effective on 4 May 2010

Nevro hereby declares that the Senza® System is in compliance with the essential requirements and other relevant provisions of the Radio Equipment Directive (2014/53/EU).

**IMPORTANT:** Changes or modification to any component of the Nevro Spinal Cord Stimulation system, unless expressly approved by Nevro Corp., could void your authority to operate this product.

**CAUTION:** Federal law restricts this device to sale, distribution and use by or on the order of a physician.

Explanation of symbols. Refer to the product for symbols that apply.





Symbols	Description
	MR Conditional
	For USA audiences only
	MR Unsafe
	Manufacturer

Table of Contents

1. Introduction .....5

2. Overview.....6

3. Definition of Terms.....6

4. Risks Associated with MRI with Senza System.....7

5. Contraindications .....7

6. Preparation Prior to MRI Examination .....8

7. Coil Positioning Restriction Zone (applicable when using 1.5T full body coil).....9

8. Conditions for Use of MRI with Senza System.....11

9. Considerations during the MRI Examination .....17

10. Considerations after the MRI Examination.....17

11. Appendix: Senza System MRI Scan Checklist.....18

## 1. Introduction

Nevro's Senza Spinal Cord Stimulation (SCS) system is an MR Conditional device that has been demonstrated to present no known hazards in a specified MR environment when following specific guidelines as described in this document.



MR Conditional

This document is a supplement to the Senza system Physician Implant and Patient Manuals and is related only to the use of a 1.5T or 3T horizontal bore MRI system for patients implanted with the Senza system.

The following tables list model numbers of components that may comprise an MR Conditional Senza system.

Table 1: Senza system components that are eligible for full body MRI scans (**1.5T only**) & head and extremity scans (**1.5T and 3T**) under specified conditions:



Component	Model Number(s)
Senza IPG(s)	NIPG1000, NIPG1500
Nevro Percutaneous Leads	LEAD10x8-xx(B)
Lead Anchors	All models (ACCK5000, ACCK5101, ACCK5200, ACCK5300)
IPG Port Plug	All models (ACCK7000)
xx = Lead length in cm	

Table 2: Senza system components that are eligible for head and extremity MRI scans only (**1.5T and 3T**) with transmit/receive head or transmit/receive local coils under specified conditions:



Component	Model Number(s)
Lead Extensions	LEAD2008-xx(B)
Surpass Surgical Lead	LEAD3005-xx(B)
xx = Lead / Extension length in cm	

The following table lists components of the Senza system that are **MR Unsafe\*\***. **Do not bring these components into the MR scanner room.**

Table 3. Components of the Senza system that are **MR Unsafe**:



Component	Model Number(s)
Trial Stimulator	EXTS1000
Patient Remote	PTRC1000
Charger	CHGR1000
Programmer Wand	CLPW1000
Clinician Programmer	CLPG2000/CLPG2500
S8 lead adaptors	SADP2008-xx(B)
M8 lead adaptors	MADP2008-xx(B)

**\*\*Additional information about Nevro products can be found at Nevro's website ([www.nevro.com/manuals](http://www.nevro.com/manuals)).**

### Patient ID card

Advise the patient to bring the most up-to-date patient ID card to all MRI appointments. MRI personnel can then use the patient ID card to identify Nevro Corp as the manufacturer of the patient's spinal cord stimulator system.

*It is important to read this entire document prior to conducting or recommending an MRI examination on a patient with the Senza system. These instructions only apply to the Senza system and do not apply to other products. The current version of these instructions can be found at Nevro's website ([www.nevro.com/manuals](http://www.nevro.com/manuals)). If you have any questions, please contact Nevro at the address or phone number at the end of this document.*

## 2. Overview

---

Magnetic Resonance Imaging (MRI) is a tool used to diagnose various diseases and conditions. MRI uses a powerful static magnetic field, gradient magnetic fields, and RF energy to construct an image of a section of the body.

Bench-top tests have shown that patients implanted with the Senza system can be safely exposed to MR environments specified in this guideline.

However, MR scans performed outside these guidelines may result in the MRI field interacting with implanted devices, potentially injuring the patient, and damaging the implanted device. Due to risks associated with using an MRI with an implanted device, it is important to read, understand, and comply with these instructions to prevent potential harm to the patient and/or damage to the device.

## 3. Definition of Terms

---

- **MR Conditional<sup>1</sup>:** An item with demonstrated safety in the MR environment within defined conditions. At a minimum, address the conditions of the static magnetic field, the switched gradient magnetic field and the radiofrequency fields. Additional conditions, including specific configurations of the item, may be required.
- **Radio frequency (RF) magnetic field:** The magnetic field in MRI that is used to flip the magnetic moments.
- **Specific absorption rate (SAR)<sup>1</sup>:** Radiofrequency power absorbed per unit of mass (W/kg).
- **Tesla (T)<sup>1</sup>:** The SI unit of magnetic induction equal to 10<sup>4</sup> gauss (G).
- **Transmit/Receive RF head coil<sup>1</sup>:** A coil used to transmit and receive RF energy that is limited to the head only.
- **Transmit/Receive RF local coil:** A coil used to transmit and receive RF energy that is limited to a section of the body only (e.g. Knee coil).
- **Trial Phase:** A time during which a person with chronic pain tests SCS (Spinal Cord Stimulator) therapy to see if and how well it works. During the trial phase, the person will use a Trial Stimulator, which is not implanted in the body.
- **Trial Simulator:** In neuromodulation, a portable and external device that allows the patient to test the therapy prior to an IPG (Implantable Pulse Generator) being implanted.

---

<sup>1</sup> ASTM F2503-13, "Standard Practice for Marking Medical Devices and Other Items for Safety in the Magnetic Resonance Environment"  
11096 Rev E.

## 4. Risks Associated with MRI with Senza System

---

The potential risks of performing MRI on patients with an implanted Senza system include:

- Device movement
- Excessive heating of or around the implanted device components
- Tissue damage
- Damage to the device
- Uncomfortable sensation
- Image artifact

## 5. Contraindications

---

**Do not** use MRI systems that are open bore or are operating at static magnetic field strengths other than 1.5T or 3T. The risks of using MRI systems operating at static magnetic field strengths other than 1.5T or 3T have not been determined and could be significant.

### Contraindications specific to the 1.5T MR scanner

- Adherence to SAR limitations in 'coil positioning restriction' zone for the full body MRI coil is absolutely necessary. Please look at the section 'coil positioning restriction zone' for further details.

### Contraindications specific to the 3T MR scanner

- **Do not** use the transmit RF body coil for 3T imaging. Only transmit/receive 3T head or local coils may be used under specified conditions.
- Many 3T head and 3T local RF coils are receive-only. **Do not** use a receive-only 3T head or 3T local RF coil as this can cause significant heating at the lead tip resulting in serious patient injury and/or device damage.
- No part of the implanted system (implantable pulse generator (IPG), extensions, percutaneous leads, lead anchors or IPG port plugs) may be within the transmit/receive 3T RF head coil.
- Under no circumstances should the 3T transmit/receive RF local coil be placed over the implanted Senza system. Because of this restriction, scanning of the area where the Senza system is implanted is not possible in 3T scanners.

### Contraindications specific to Surpass™ surgical leads LEAD3005-xx(B)

- **Do not** use the transmit RF body coil for imaging when Surpass surgical leads are part of the system. Only transmit/receive head or transmit/receive local coils may be used under specified conditions.
- **Do not** use a transmit body coil with a receive-only head coil or receive-only local coil as this can cause significant heating at the lead tip resulting in serious patient injury and/or device damage.
- No part of the implanted system (implantable pulse generator (IPG), extensions, surgical leads, lead anchors or IPG port plugs) may be within the transmit/receive RF head coil.
- Under no circumstances should the transmit/receive RF head or local coil be placed over the implanted Senza system with Surpass surgical leads. Because of this restriction, scanning of the area where the Senza system with surgical leads is implanted is not possible in 1.5T or 3T scanners.

## 6. Preparation Prior to MRI Examination

---

- Inform the patients of all the risks associated with undergoing an MRI examination as stated in this document.
- Always consult with the physician responsible for managing the Patient's SCS System.
- A trained professional with the proper knowledge of MRI equipment such as an MRI-trained radiologist or MRI physicist must ensure the MRI examination will be conducted according to the information outlined in this document.
- Identify if the patient has any other medical device implants. The most restrictive MRI exposure requirements must be used if the patient has multiple medical device implants. Consult with the manufacturers of the devices.

The patient's pain management physician, referring medical facility, implanting physician or a Nevro representative shall perform the following:

- Document the patient's programming parameters.
  - Perform an impedance check. Do not perform an MRI if any impedance is greater than 10 k $\Omega$ .
  - Turn stimulation off. This can be done using either the programmer, patient remote, or patient charger.
- 
- Do not conduct an MRI scan if the implanted percutaneous lead(s), surgical lead(s) or lead extension(s) are not connected to the IPG.
  - If possible, do not sedate the patient, so the patient can inform the MRI operator of any problems during the examination.
  - Instruct the patient to immediately inform the MRI operator if any discomfort, stimulation, shocking, or heating is experienced during the examination.
  - MRI images near implanted devices may be distorted. Contact Nevro technical services for additional information about the expected extent and appearance of the image artifact under various scan conditions.



## 7. Coil Positioning Restriction Zone (applicable when using 1.5T full body coil)

---

- Adherence to SAR limitations in 'coil positioning restriction' zone for the *transmit only* and *transmit/receive* full body MRI coil is absolutely necessary.

### **NOTE:**

- The use of a transmit only and transmit/receive 3T full body coil is contraindicated on patients implanted with the Senza system.
- The use of a transmit only and transmit/receive 1.5T and 3T full body coils is contraindicated on patients implanted with the Senza system with Surpass surgical leads (LEAD3005-XX(B)).
- The 'coil positioning restriction' zone only applies to transmit only and transmit/receive full body 1.5T coils, and the receive-only 1.5T coils do not have any positioning restrictions.

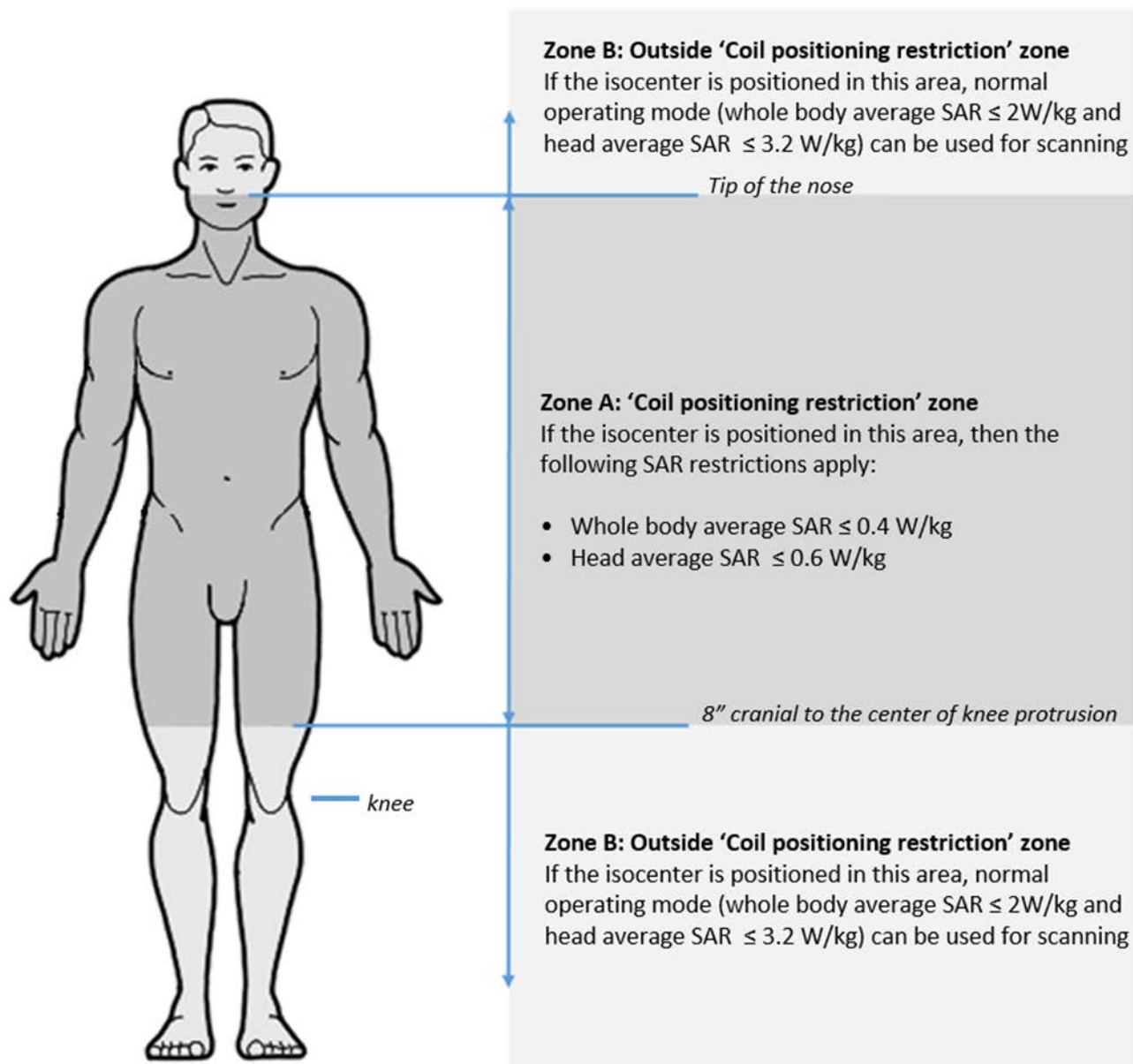
*If the patient is positioned within the 'coil positioning restriction' zone as demonstrated by Zone A in Figure 1,*

- The average whole body SAR shall be limited to 0.4 W/Kg and the head average SAR shall be limited to 0.6 W/kg.

*If the patient is positioned in outside 'coil positioning restriction' zone as demonstrated by Zone B in Figure 1,*

- The average SAR shall be limited to 2 W/Kg (normal operating mode) and the head average SAR shall be limited to 3.2 W/kg (normal operating mode).

In practice, this means that if the marker line of the laser light localizer, which is used for subsequent positioning of the patient within the MRI scanner, is between the tip of the nose and 8" cranial (superior) to the knee protrusion, then the patient is in 'coil positioning restriction' zone.



*Figure 1: Coil positioning restriction zone. Starting from the foot end, the 'coil positioning restriction zone' starts at 8" cranial to the center of knee protrusion. Starting from the top of the skull, the 'coil positioning restriction' zone starts at the tip of the nose. In practice, this means that if the marker line of the laser light localizer, which is used for subsequent positioning of the patient within the MRI scanner, is between the tip of the nose and 8" cranial to the knee protrusion, then the patient is in 'coil positioning restriction' zone.*

## 8. Conditions for Use of MRI with Senza System

---

The MRI examinations described below can be safely conducted in patients with the Senza system if all the instructions in this document are followed. Non-clinical testing has shown the Senza system is MR Conditional. A patient with this device can be safely scanned in an MR system meeting the following conditions.

### Head Scans and Neck Scans

MRI scans of head can be safely conducted in patients implanted with Senza system using 1.5T and 3T MR scanners if the following conditions are met:

- General requirements (Verify with the patient's pain management physician, referring medical facility, implanting physician or a Nevro representative)
  - Do not perform an MRI if the patient has a device or device component (lead, extension, etc.) from a different manufacturer attached to the Nevro IPG. The risks of performing MRI scan with a Nevro IPG connected to a lead manufactured by a different company have not been evaluated.
  - The trial stimulator, patient remote, charger, surgical accessories, programmer wand, and clinician programmer are MR Unsafe and should not be allowed into the MRI scan (magnet) room.
  - Do not perform MR scan if the patient is undergoing the trial phase.
  - Do not perform MR scan if the patient is implanted with a Senza System component not listed in Table 1 or Table 2 above.
  - Do not conduct an MRI if the implanted Nevro percutaneous lead(s), surgical lead(s) or lead extension(s) are not connected to the IPG.
  - Do not perform an MRI if impedance on any of the conductor path on the lead is greater than 10 kΩ.
  - Body Temperature – If a body coil is used (transmit only or transmit/receive), do not perform a scan if the patient's body temperature is greater than 37° C (98.6°F). Elevated body temperature in conjunction with tissue heating caused by an MRI scan increases the risk of excessive tissue heating, which could cause tissue damage.
    - Do not cover the patient with blankets or heated blankets. Blankets raise the patient's body temperature and increase the risk of tissue heating, which could cause tissue damage.
- Scanner requirements:
  - Only use horizontal closed bore MR scanners. Do not use open bore MRI systems or systems operating at other static magnetic field strengths. Do not use higher or lower static magnetic field strengths (0.5, 1.0 or 4.0T). The risk of using MRI systems operating at other static magnetic field strengths has not been evaluated.
  - Only use MR scanners with maximum spatial field gradient of 1900 gauss/cm (19 T/m) or less.
  - Only use MR scanners which limit gradient slew rate to 200T/m/sec per axis or less.

- For scanning at reduced SAR levels, only 1.5 T scanners capable of controlling SAR exposure to fractional limits less than 2 W/kg whole body average SAR or 3.2 W/kg head average SAR are allowed.
- Allowed coils:
  - For 1.5T scanners:
    - Receive-only head coils, transmit/receive head coils, or transmit/receive body coils are allowed for patients implanted with any of the components listed in Table 1.
    - If a receive-only head coil or transmit/receive body coil is used, then the SAR limitation associated with the 'coil positioning restriction zone' specified for full body coils applies (see Figure 1).
    - Only transmit/receive head coils are allowed for patients implanted with the Surpass surgical lead (LEAD3005-xx(B)).
  - For 3T scanners: Only transmit/receive head coils are allowed.
- Implant location restriction:
  - For 1.5T scanners: If a transmit/receive head coil is used, then no part of the Senza system (implantable pulse generator (IPG), extensions, percutaneous leads, surgical leads, lead anchors or IPG port plugs) may be within the transmit/receive RF head coil. If a receive-only head coil is used requirements specified in 'coil positioning restriction zone' shall be met.
  - For 3T scanners: No part of the implanted Senza system (implantable pulse generator (IPG), extensions, percutaneous leads, surgical leads, lead anchors or IPG port plugs) may be within the transmit/receive RF head coil.
- MRI scan parameters:
  - For transmit/receive head coils in 1.5T and 3T scanners: Whole head averaged specific absorption rate (SAR) must be < 3.2 W/kg (Normal Operating Mode).  
If a receive-only head coil or body transmit/receive coil is used (1.5T only), then the SAR limitation associated with the 'coil positioning restriction zone' specified for full body coils applies (see Figure 1).
- Scan time:
  - 1.5T scanner: Maximum active scan time allowed is 30 minutes per study.
  - 3T scanner: Maximum active scan time allowed is 30 minutes per study.

## Torso scans

Torso scans (chest, cardiac, spine, pelvis etc) can be safely conducted in patients implanted with the Senza system using 1.5T scanners if the following conditions are met:

- General requirements (verify with the patient's pain management physician, referring medical facility, implanting physician or a Nevro representative)
  - Do not perform an MRI using the transmit RF body coil if the patient has a Surpass surgical lead (LEAD3005-XX(B)) attached to the Nevro IPG, as this can cause significant heating at the lead tip resulting in serious patient injury and/or device damage. The risks of performing MRI scan with a Nevro IPG connected to a Surpass surgical lead have not been evaluated for transmit RF body coils.
  - Do not perform an MRI if the patient has a device or device component (lead, extension, etc.) from a different manufacturer attached to the Nevro IPG. The risks of performing MRI scan with a Nevro IPG connected to a lead manufactured by a different company have not been evaluated.
  - The trial stimulator, patient remote, charger, surgical accessories, programmer wand, and clinician programmer are MR Unsafe and should not be allowed into the MRI scan (magnet) room.
  - Do not perform MR scan if the patient is undergoing the trial phase.
  - Do not perform MR scan if the patient is implanted with a Senza System component not listed in Table 1 above.
  - Do not conduct an MRI if the implanted Nevro percutaneous lead(s) or lead extension(s) are not connected to the IPG.
  - Do not perform an MRI if impedance on any of the conductor path on the lead is greater than 10 k $\Omega$ .
  - Body Temperature – Do not perform a scan if the patient's body temperature is greater than 37° C (98.6°F). Elevated body temperature in conjunction with tissue heating caused by an MRI scan increases the risk of excessive tissue heating, which could cause tissue damage.
    - Do not cover the patient with blankets or heated blankets. Blankets raise the patient's body temperature and increase the risk of tissue heating, which could cause tissue damage.
- Scanner requirements:
  - Only use horizontal closed bore MR scanners. Do not use open- bore MRI systems or systems operating at other static magnetic field strengths. Do not use higher or lower static magnetic field strengths (0.5, 1.0 or 4.0T). The risk of using MRI systems operating at other static magnetic field strengths has not been evaluated.
  - Only use MR scanners with maximum spatial field gradient of 1900 gauss/cm (19 T/m) or less.
  - Only use MR scanners which limit gradient slew rate to 200T/m/sec per axis or less.

- For scanning at reduced SAR levels, only 1.5 T scanners capable of controlling SAR exposure to fractional limits less than 2 W/kg whole body average SAR or 3.2 W/kg head average SAR are allowed.
- Allowed coils:
  - For 1.5T scanners:
    - Use of a full body coil (transmit or transmit/receive) is allowed if the 'coil positioning restriction zone' requirements are met, for patients implanted with any of the components listed in Table 1.
    - Use of a full body coil is NOT allowed for patients implanted with the Surpass surgical lead (LEAD3005-xx(B))
  - For 3T scanners: There are NO allowed coils with 3T scanners for torso scans.
- Implant location restriction:
  - For 1.5T scanners: Please refer to section 'coil positioning restriction zone'.
  - For 3T scanners: There are NO allowed coils with 3T scanners for torso scans.
- MRI scan parameters:
  - For 1.5T scanners:
    - Whole body average SAR is limited to 0.4 W/Kg and head average SAR is limited to 0.6 W/kg in the 'coil positioning restriction' zone. Please refer to section 'coil positioning restriction zone'.
    - Whole body average SAR is limited to 2 W/Kg (normal operating mode) and the head average SAR is limited to 3.2 W/kg (normal operating mode) in the 'outside coil restriction' zone. Please refer to section 'coil positioning restriction zone'.
  - For 3T scanners: There are NO allowed coils with 3T scanners for torso scans.
- Scan time:
  - 1.5T scanner: Maximum active scan time allowed is 30 minutes per study.
  - 3T scanner: There are NO allowed coils with 3T scanners for torso scans.

## Extremity scans

Extremity scans (knee, wrist, foot) can be safely conducted in patients implanted with Senza system using 1.5T and 3T scanners if the following conditions are met:

- General requirements (verify with the patient's pain management physician, referring medical facility, implanting physician or a Nevro representative)
  - Do not perform an MRI if the patient has a device or device component (lead, extension, etc.) from a different manufacturer attached to the Nevro IPG. The risks of performing MRI scan with a Nevro IPG connected to a lead manufactured by a different company have not been evaluated.
  - The trial stimulator, patient remote, charger, surgical accessories, programmer wand, and clinician programmer are MR Unsafe and should not be allowed into the MRI scan (magnet) room.
  - Do not perform MR scan if the patient is undergoing the trial phase.
  - Do not perform MR scan if the patient is implanted with a Senza System component not listed in Table 1 or Table 2 above.
  - Do not conduct an MRI if the implanted Nevro percutaneous lead(s), surgical lead(s) or lead extension(s) are not connected to the IPG.
  - Do not perform an MRI if impedance on any of the conductor path on the lead is greater than 10 k $\Omega$ .
  - Body Temperature – If a body coil is used (transmit only or transmit/receive), do not perform a scan if the patient's body temperature is greater than 37° C (98.6°F). Elevated body temperature in conjunction with tissue heating caused by an MRI scan increases the risk of excessive tissue heating, which could cause tissue damage.
    - Do not cover the patient with blankets or heated blankets. Blankets raise the patient's body temperature and increase the risk of tissue heating, which could cause tissue damage.
- Scanner requirements:
  - Only use horizontal closed bore MR scanners. Do not use open bore MRI systems or systems operating at other static magnetic field strengths. Do not use higher or lower static magnetic field strengths (0.5, 1.0 or 4.0T). The risk of using MRI systems operating at other static magnetic field strengths has not been evaluated.
  - Only use MR scanners with maximum spatial field gradient of 1900 gauss/cm (19 T/m) or less.
  - Only use MR scanners which limit gradient slew rate to 200T/m/sec per axis or less.
  - For scanning at reduced SAR levels, only 1.5 T scanners capable of controlling SAR exposure to fractional limits less than 2 W/kg whole body average SAR or 3.2 W/kg head average SAR are allowed.

- Allowed coils:
  - For 1.5T scanners:
    - Use of receive-only local coils, transmit/receive local coils or body transmit/receive coils is allowed for patients implanted with any of the components listed in Table 1.
    - If a receive-only local coil is used, then the SAR limitation associated with the 'coil positioning restriction zone' specified for full body coils applies (see Figure 1).  
Only transmit/receive local coils are allowed for patients implanted with the Surpass surgical lead (LEAD3005-xx(B)).
  - For 3T scanners: Use of only transmit/receive local coils is allowed.
  
- Implant location restriction:
  - For 1.5T scanners:
    - If a transmit/receive body coil or a receive-only local coil is used (with full body coil in the transmit mode): Please follow the requirements set in section 'coil positioning restriction zone'.
    - If a transmit/receive local coil is used: No part of implanted Senza system (implantable pulse generator (IPG), extensions, percutaneous leads, lead anchors or IPG port plugs) may be within the transmit/receive RF head coil.
  - For 3T scanners: No part of implanted Senza system (implantable pulse generator (IPG), extensions, percutaneous leads, surgical leads, lead anchors or IPG port plugs) may be within the transmit/receive RF local coil.
  
- MRI scan parameters:
  - For transmit/receive local coils in 1.5T and 3T scanners: SAR limit must be per Normal Operating Mode.
  - If a receive-only local coil or transmit/receive body coil is used (1.5T only), then the SAR limitation/positioning restriction zone specified for full body coils applies (see Figure 1).
    - Whole body average SAR is limited to 0.4 W/Kg and head average SAR is limited to 0.6 W/kg in the 'coil positioning restriction' zone. Please refer to section 'coil positioning restriction zone'.
    - Whole body average SAR is limited to 2 W/Kg (normal operating mode) and the head average SAR is limited to 3.2 W/kg (normal operating mode) in the 'outside coil restriction' zone. Please refer to section 'coil positioning restriction zone'.
  
- Scan time:
  - 1.5T scanner: Maximum active scan time allowed is 30 minutes per study.
  - 3T scanner: Maximum active scan time allowed is 30 minutes per study.



## **9. Considerations during the MRI Examination**

---

Carefully monitor the patient throughout the MRI examination both visually and audibly. Discontinue the MRI examination immediately if the patient cannot respond to questions or reports any problems.

## **10. Considerations after the MRI Examination**

---

The patient's pain management physician, referring medical facility, implanting physician or a Nevro representative shall perform the following:

- Turn the IPG on.
- Confirm that the IPG has been restored to pre-MRI settings.

## 11. Appendix: Senza System MRI Scan Checklist

*It is important to read the entire Senza System MRI Guidelines manual (11096) prior to conducting an MRI scan. Prior to performing a scan, verify all information with the patient's pain management physician, the referring medical facility, the implanting physician or a Nevro representative.*

### 11.1. Verify model numbers of implanted SCS system components:

Table 4: Senza system components eligible for MR conditional full body scans (**1.5T only**) and Head/Neck & Extremity Scans (**1.5T and 3T**):

Full Body Eligible (1.5T only)	Head/Neck & Extremity Eligible (1.5T and 3T)
<input type="checkbox"/> IPG1000 <input type="checkbox"/> IPG1500 <input type="checkbox"/> LEAD1058-xx(B)	

'-xx' = Lead length

Table 5: Senza system components eligible for MR conditional Head/Neck & Extremity Scans (**1.5T and 3T**):

Head/Neck & Extremity Scans Only (1.5T and 3T)
<input type="checkbox"/> LEAD2008-xx(B) <input type="checkbox"/> LEAD3005-xx(B)

'-xx' = Lead/Extension length

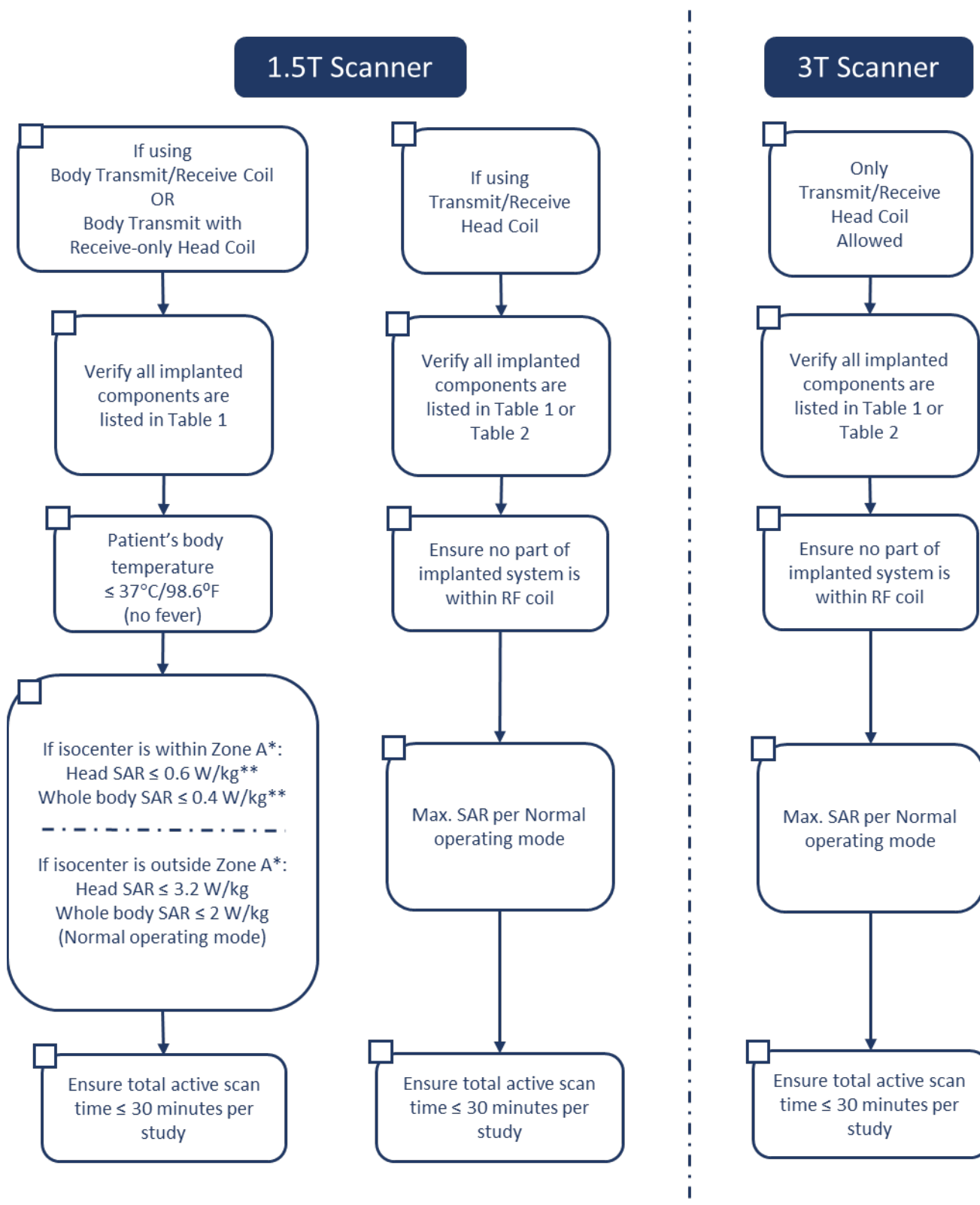
### 11.2. Ensure the following:

- ☐ No abandoned leads: leads or extensions not connected to the IPG
- ☐ No lead electrode impedance is greater than 10 k $\Omega$
- ☐ Using a horizontal closed bore MRI
- ☐ Maximum spatial field gradient 1900 gauss/cm (19 T/m) or less
- ☐ Maximum gradient slew rate limited to 200T/m/sec per axis or less

### 11.3. Perform scans per conditions listed below. If conducting an image of the:

- a. **Head and/or Neck** - go to section 11.4
- b. **Torso** - go to section 11.5
- c. **Extremities** - go to section 11.6

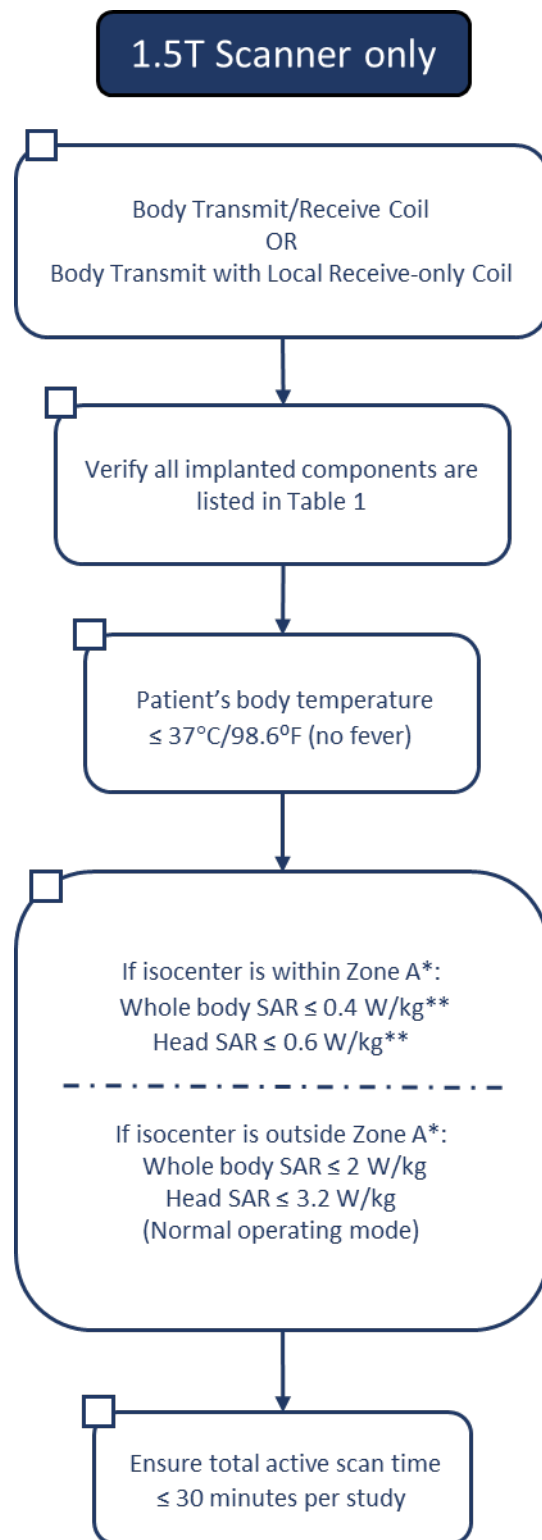
## 11.4. Head /Neck Scans



\*Zone A = Coil positioning Restriction Zone of Figure 1

\*\*For scanning at reduced SAR levels, only 1.5 T scanners capable of controlling SAR exposure to fractional limits less than 2 W/kg whole body average SAR or 3.2 W/kg head average SAR are allowed.

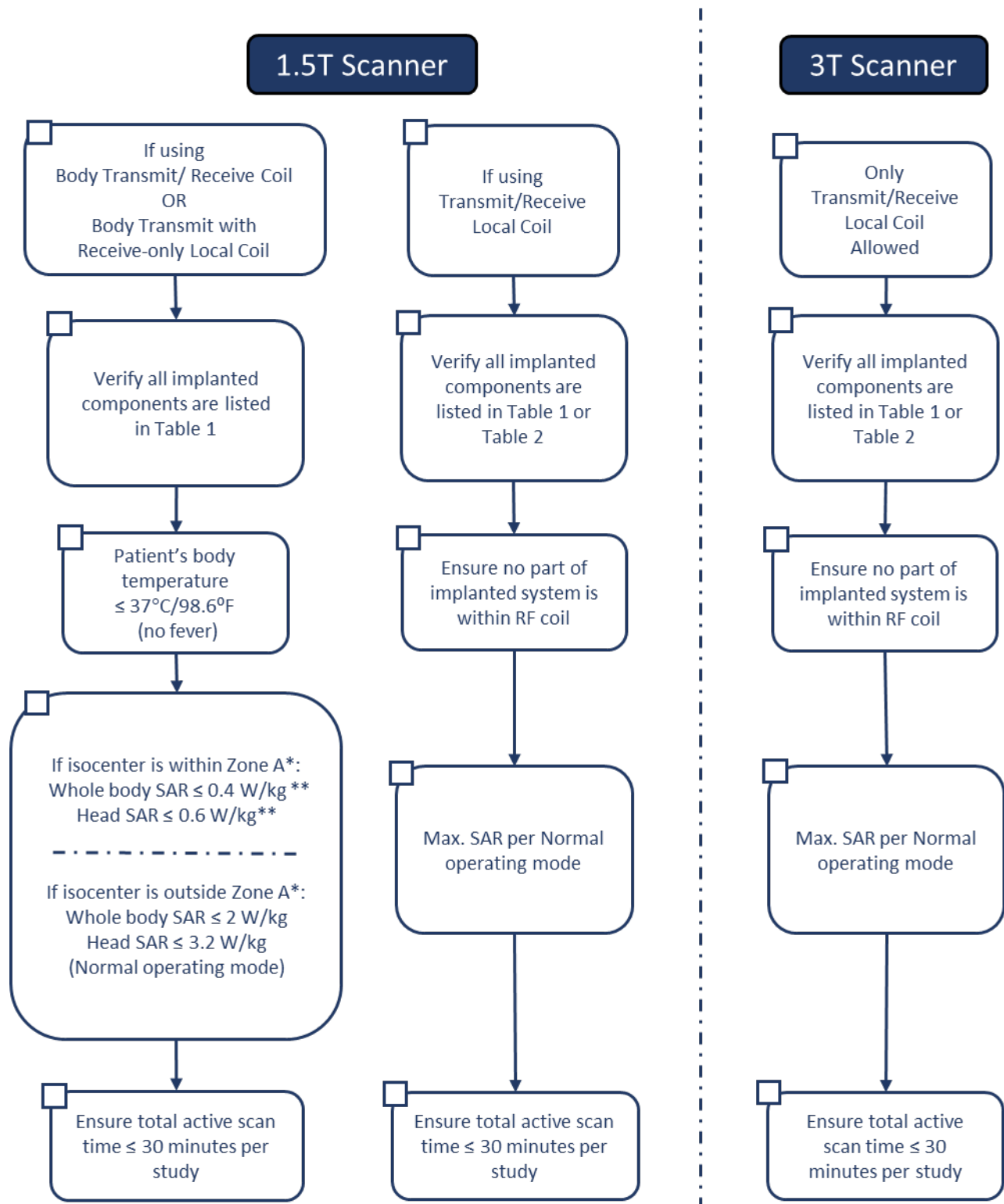
## 11.5. Torso Scans



\*Zone A = Coil positioning Restriction Zone of Figure 1

\*\*For scanning at reduced SAR levels, only 1.5 T scanners capable of controlling SAR exposure to fractional limits less than 2 W/kg whole body average SAR or 3.2 W/kg head average SAR are allowed.

## 11.6. Extremity Scans



\*Zone A = Coil positioning Restriction Zone of Figure 1

\*\*For scanning at reduced SAR levels, only 1.5 T scanners capable of controlling SAR exposure to fractional limits less than 2 W/kg whole body average SAR or 3.2 W/kg head average SAR are allowed.

**NEVRO CORP.**

All questions or concerns about Nevro Corp. products should be forwarded to:

Nevro Corp.  
1800 Bridge Parkway  
Redwood City, CA 94065  
USA

Tel: +1.650.251.0005  
Fax: +1.650.251.9415  
Email: [info@nevro.com](mailto:info@nevro.com)