



Be Part Of The Discovery

Creating a Prominent North American Gold Exploration Company

Strong Portfolio of Highly Prospective District Scale Assets in Tier I Jurisdictions

www.gfgresources.com

September 2020

Cautionary Statement

Cautionary Note Regarding Forward-Looking Information

This document contains certain forward-looking statements relating but not limited to the Company's expectations, intentions, plans and beliefs. Forward-looking information can often be identified by forward-looking words such as "anticipate", "believe", "expect", "goal", "plan", "intent", "estimate", "may" and "will" or similar words suggesting future outcomes or other expectations, beliefs, plans, objectives, assumptions, intentions or statements about future events or performance. Forward-looking information may include reserve and resource estimates, estimates of future production, unit costs, costs of capital projects and timing of commencement of operations, and is based on current expectations that involve a number of business risks and uncertainties. Factors that could cause actual results to differ materially from any forward-looking statement include, but are not limited to, failure to establish estimated resources and reserves, the grade and recovery of mined ore varying from estimates, capital and operating costs varying significantly from estimates, delays in obtaining or failures to obtain required governmental, environmental or other project approvals, inflation, changes in exchange rates, fluctuations in commodity prices, delays in the development of projects and other factors. Forward-looking statements are subject to risks, uncertainties and other factors that could cause actual results to differ materially from expected results.

Potential shareholders and prospective investors should be aware that these statements are subject to known and unknown risks, uncertainties and other factors that could cause actual results to differ materially from those suggested by the forward-looking statements. Shareholders are cautioned not to place undue reliance on forward-looking information. By its nature, forward-looking information involves numerous assumptions, inherent risks and uncertainties, both general and specific, that contribute to the possibility that the predictions, forecasts, projections and various future events will not occur. GFG Resources Inc. undertakes no obligation to update publicly or otherwise revise any forward-looking information whether as a result of new information, future events or other such factors which affect this information, except as required by law.

Qualified Persons

Brian Skanderbeg, P.Geo. and M.Sc., serves as President and CEO of GFG, and is a "qualified person" within the meaning of National Instrument 43-101 – Standards of Disclosure for Mineral Projects. Mr. Skanderbeg has reviewed and approved the information contained in this document.

A New North American Au Explorer

A Compelling Investment Opportunity



Experienced Management & Board

Highly credible & disciplined team with track record of success in exploration, development & production

District Scale Opportunities

Consolidated two district scale assets with brownfield & greenfield opportunities (+800 km²)

World Class Gold Belts

Pen Gold & Dore Gold Projects: located west of prolific gold district of Timmins, ON where +70M ozs of historic gold production

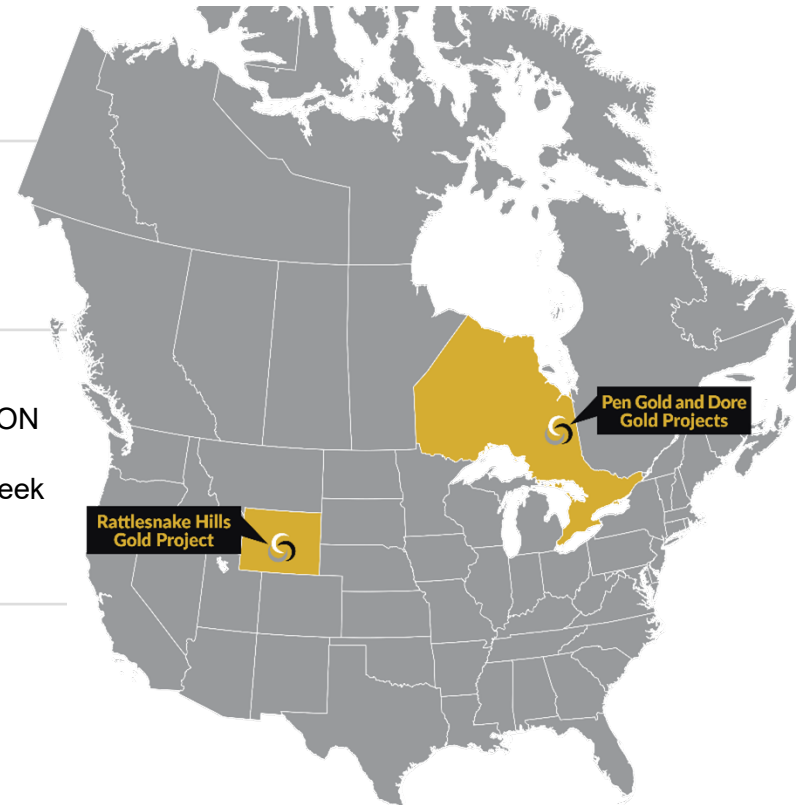
Rattlesnake Hills Gold Project: alkaline gold system analogous to the Cripple Creek (Newmont) & Wharf (Coeur) Au systems

Tier I Mining Jurisdictions

Ontario & Wyoming are highly supportive of mining with significant infrastructure proximal to projects

Aggressive Exploration Strategy

Well funded to aggressively advance projects with a focus to maximize capital in the ground



Corporate Snapshot

Major Insider Ownership & Backed by Strong Institutions



Capital Structure

Shares outstanding (basic)	132.5 million
Warrants (C\$0.27)	5.4 million
Shares outstanding (fully diluted)	144.2 million
Share price (Aug. 28, 2020)	C\$0.24
Market Cap	~C\$32 million
Cash (Aug. 1, 2020)	~C\$7.0 million

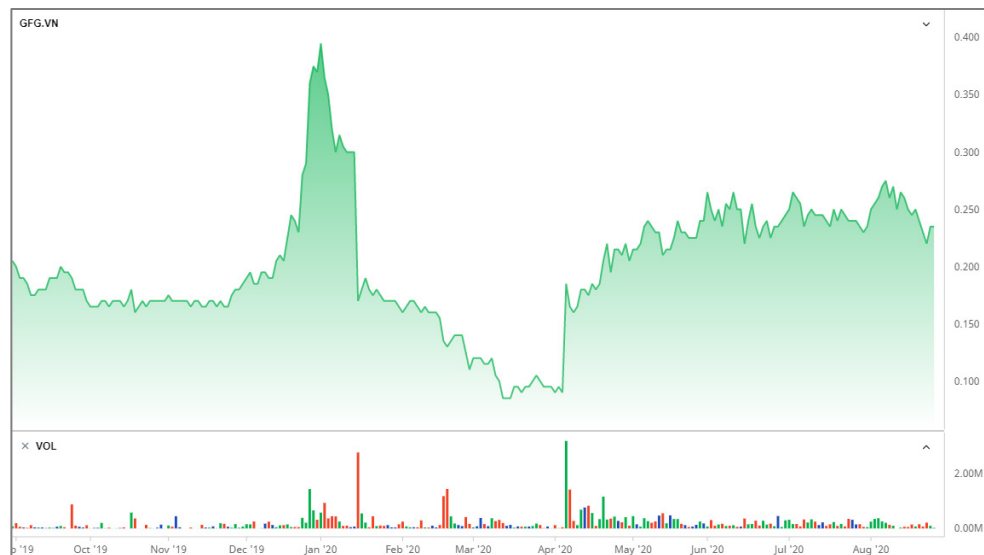
Analyst Coverage

VIII Capital	David Talbot
Agentis Capital	Michael Gray

Top Shareholders

Alamos Gold	SSI Asset Management
U.S Global Investors	Gold 2000
Delbrook Capital	Probe Metals
Medalist Capital	1875 Finance

Insiders ~6%



Recent Financing (May 6, 2020):

Deal Terms:

Total raise: C\$5.9M
Hard Dollar: C\$1.3M @ 0.19/sh
Charity Flow Through: C\$4.6M @ 0.29/sh
No warrants

Alamos Gold participated as strategic investor with 9.9% investment

Leadership Team

Successful Explorers, Developers & Producers



Management Team

Brian Skanderbeg President & CEO

Rick Johnson CFO & Corp. Secretary

Tim Brown VP, Exploration U.S.

Rob Mackie VP, Exploration Canada

Marc Lepage VP, Business Development

Board of Directors

Patrick Downey Chair

Stephen de Jong Director

Arnold Klassen Director

Brian Booth Director

Our experience includes:

 **CLAUDE**
Resources Inc.



 **INTEGRA**
RESOURCES

 **GOLDCORP**

 **ANGLOGOLDASHANTI**

 **KL KIRKLAND LAKE GOLD**

 **INTEGRA GOLD**
CORP.

 **OREZONE**

 **Viceroy**
Exploration Ltd.

 **ELGIN**
MINING INC.

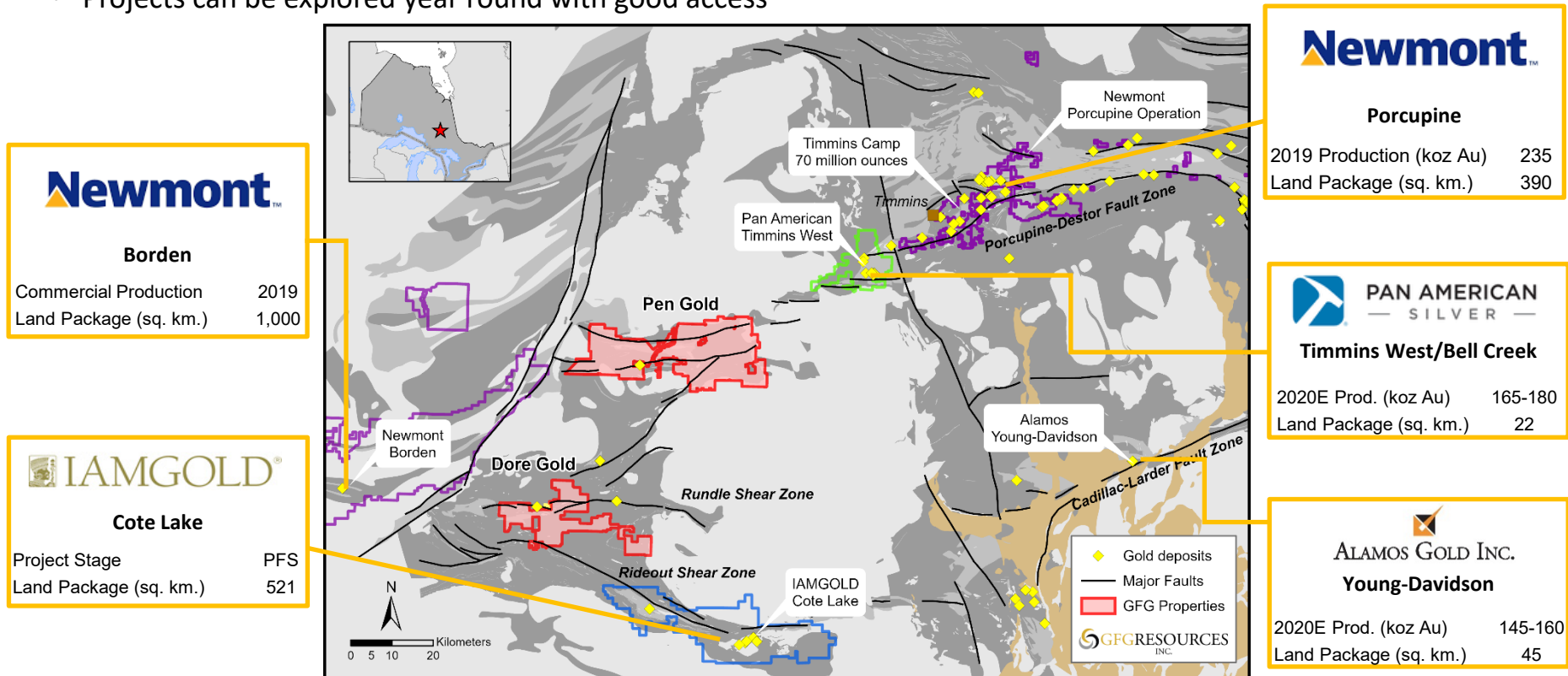
 **LS LAKE SHORE GOLD CORP.**

 **DALRADIAN**
GOLD

Surrounded by Majors

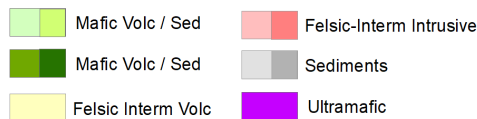
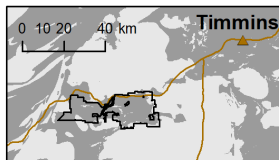
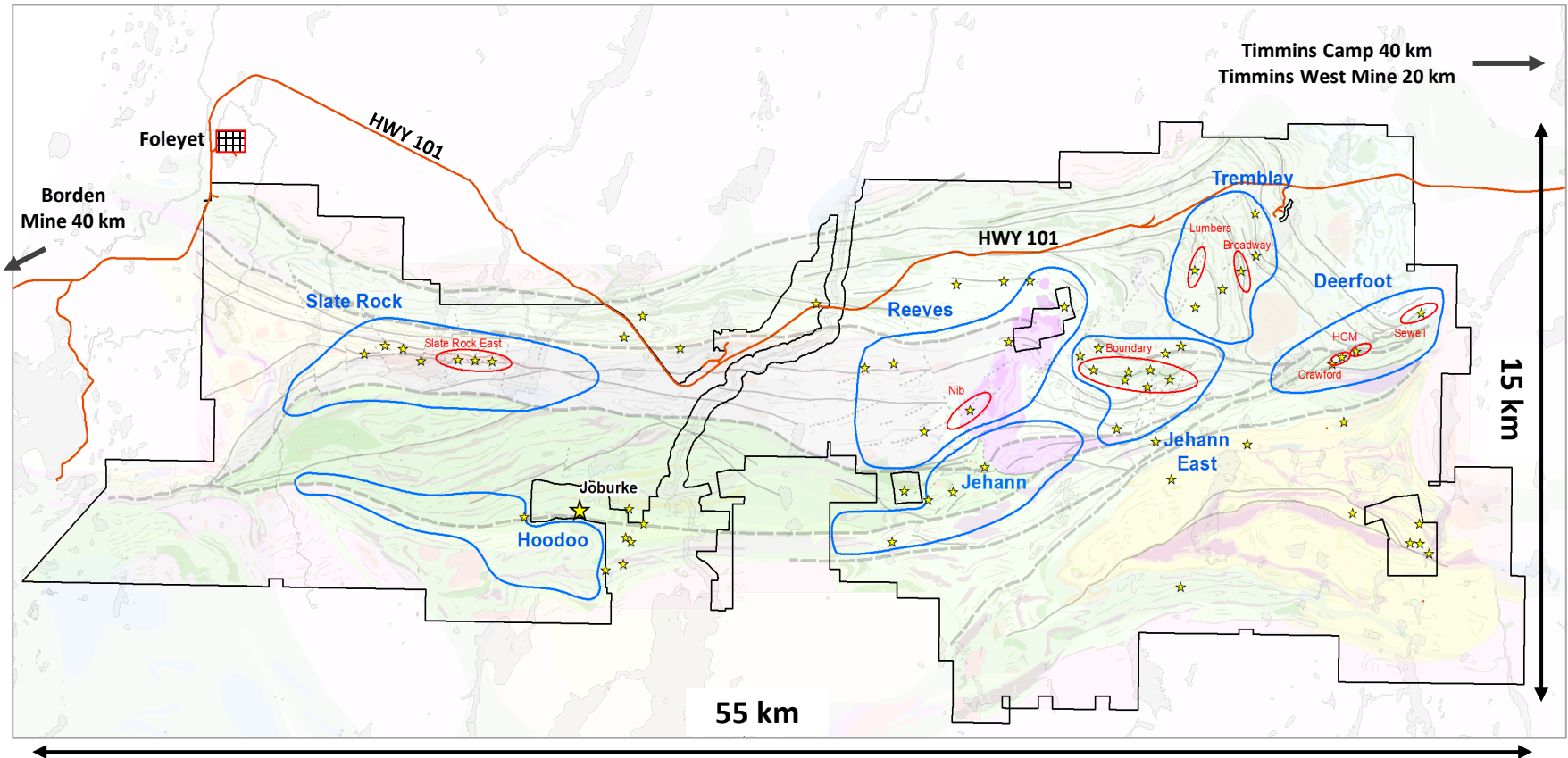
World Class Gold District & Infrastructure

- GFG controls one of the largest land positions in the district (+680 km²)
- Timmins Gold District has produced +70 million ounces of gold
- Recent discoveries **west** of the historic Timmins mining district demonstrate prospectivity
 - Timmins West, 144, Borden & Cote Lake
- Outstanding infrastructure, skilled labour force & community support
- Projects can be explored year round with good access



Multiple Opportunities for Discovery

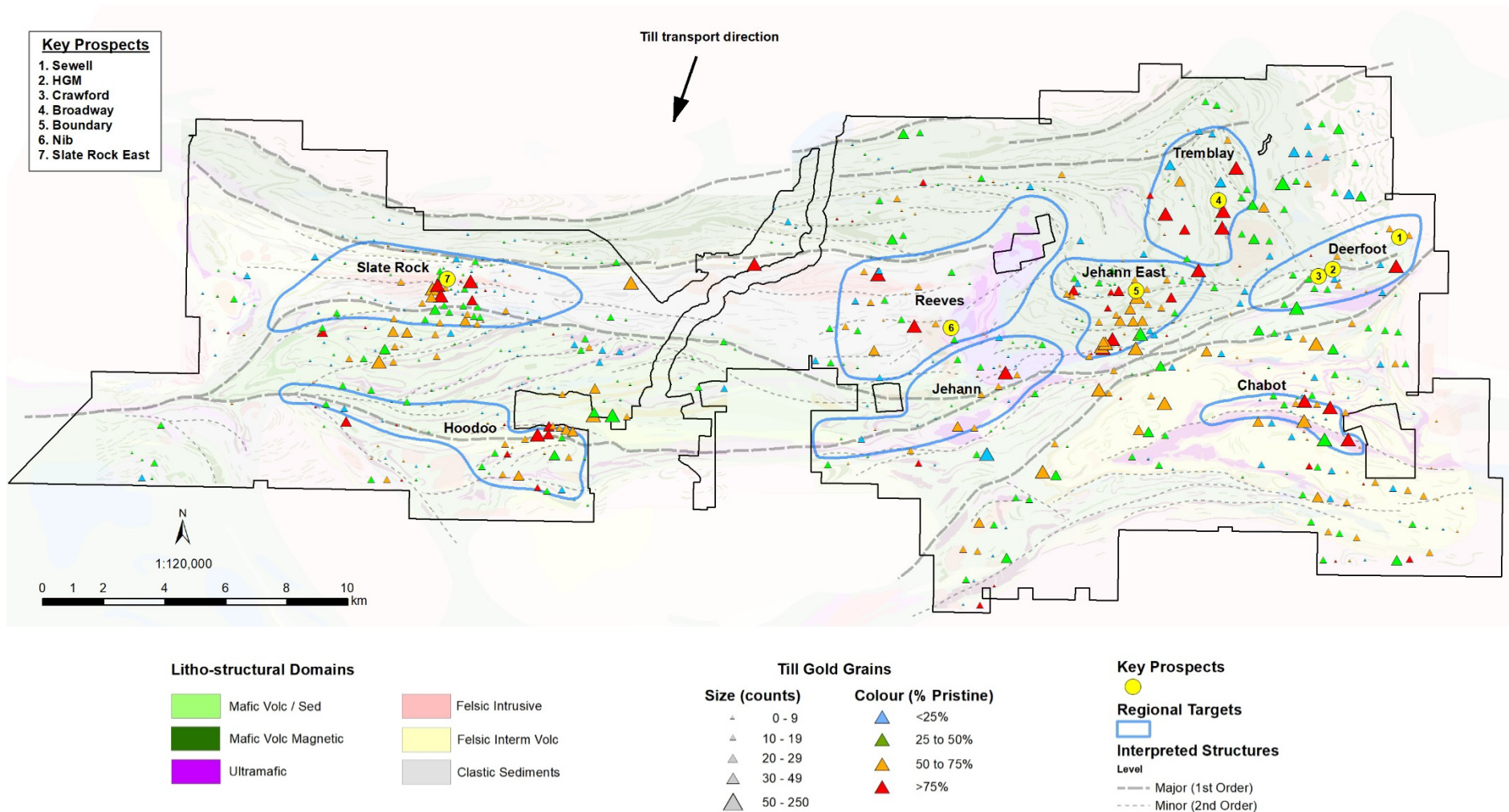
Camp Scale Targets



Generating Multiple Au Targets

Till Sampling – A Useful Regional Targeting Tool

Till sampling works.....gold in till results confirmed current camp scale targets & generated new targets



*See footnote for QA/QC disclosure p.30

Proof is in the Drill Bit

New Discovery & Multiple High-Grade Results

“We are demonstrating that this area of the Abitibi is underexplored & represents an exciting region to make gold discoveries”

Slate Rock:

- Demonstrated broad zones of Au mineralization & recently hit coarse VG

Highlights: 0.47 g/t Au over 25.3m incl. 3.58 g/t Au over 1.0m & 0.41 g/t Au over 13.5m

Nib:

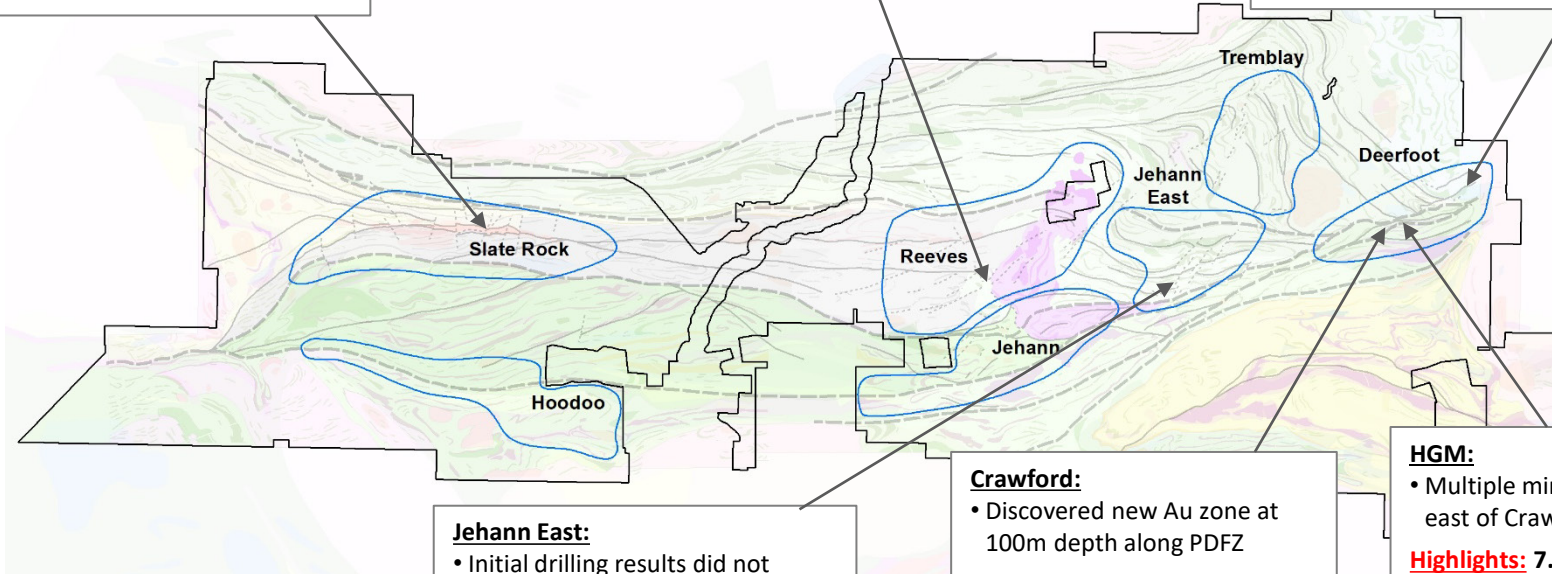
- Most significant intercept on entire project. Multiple zones of mineralization with VG

Highlight: 71.27g/t Au over 8.5m incl. 511.00 g/t Au over 1.15m

Sewell:

- Intersected 3 distinct high-grade Au structures 50 m west of Sewell target
- Confirmed high-grade Au in core of Sewell

Highlights: 3.57 g/t Au over 5.6m incl. 7.44 g/t Au over 1.9m; 14.70 g/t Au over 0.8m & 33.77 g/t Au over 1.1m



Jehann East:

- Initial drilling results did not explain significant till anomaly

Crawford:

- Discovered new Au zone at 100m depth along PDFZ

Highlights: 21.26 g/t Au over 1.7m incl. 39.70 g/t Au over 0.9m; 2.50 g/t Au over 1.0m & 0.19 g/t Au over 20.3m

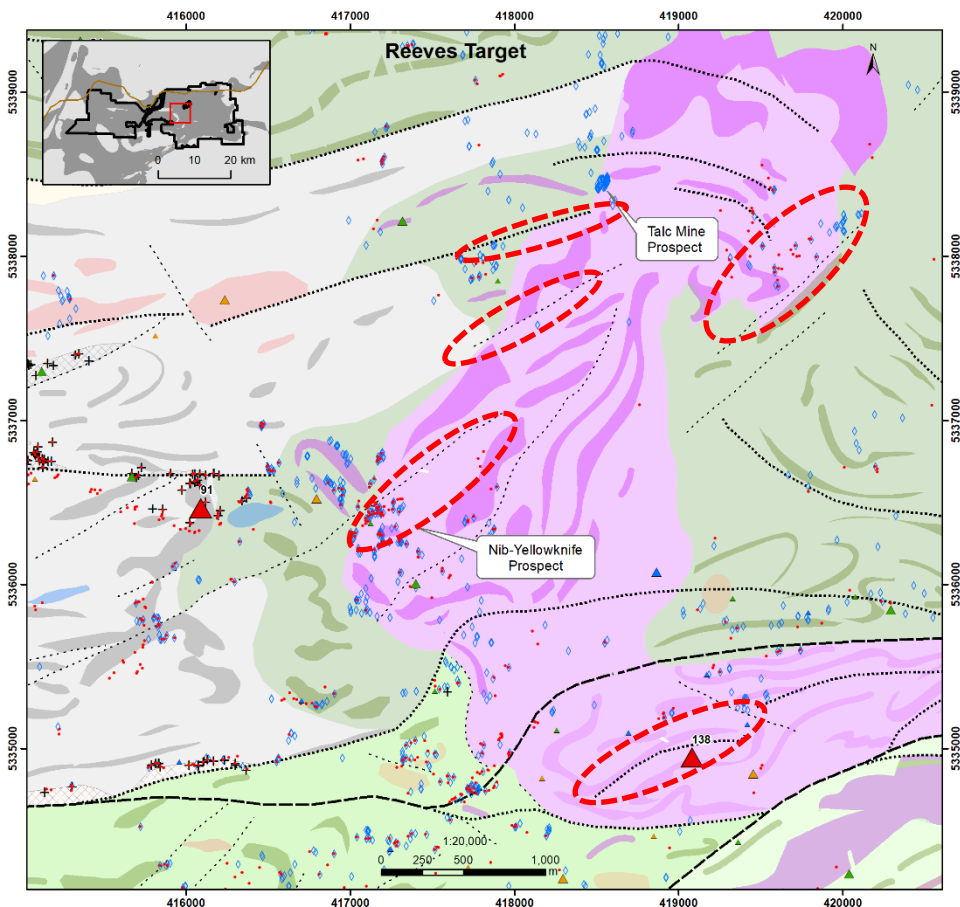
HGM:

- Multiple mineralized lenses 400m east of Crawford along PDFZ

Highlights: 7.53 g/t Au over 2.2m incl. 31.80 g/t Au over 0.5m; 25.96 g/t Au over 1.0 m incl. 51.80 g/t Au over 0.5m

Reeves Regional Target

A Target Rich Environment



Legend

- Strain (mod/high)
- ◊ Carbonate Alt
- + Polymictic Conglomerate

Till Gold Grains	
Size (counts)	Colour (% Pristine)
▲ 0 - 10	▲ <25%
▲ 10 - 20	▲ 25 to 50%
▲ 20 - 30	▲ 50 to 75%
▲ 30 - 50	▲ >75%
▲ 50 - 250	

- Felsic Intrusive
- Ultramafic-mafic
- Mafic Volc / Sed
- Mafic Volc Magnetic
- Sediments

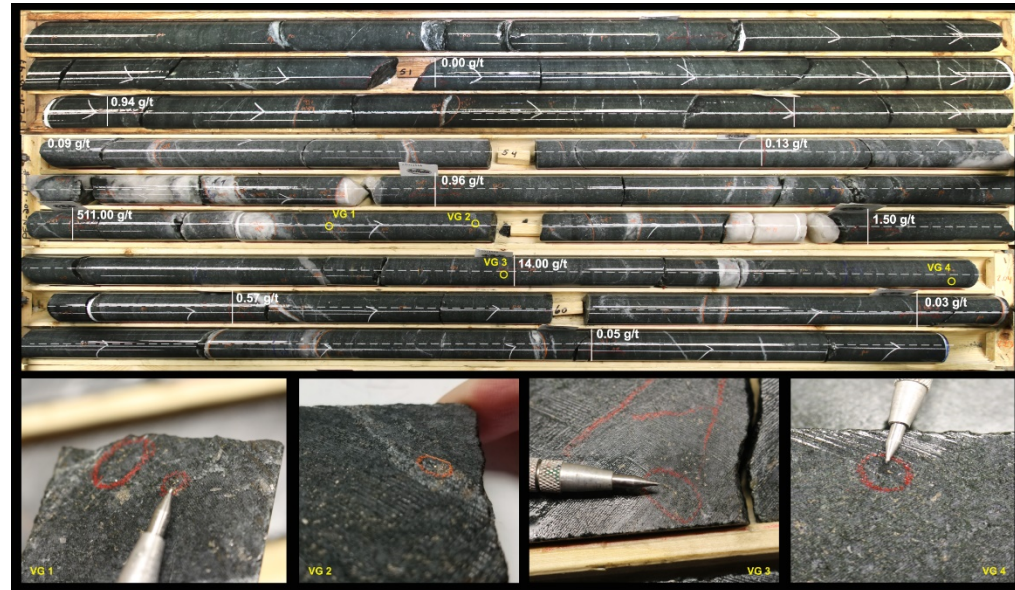
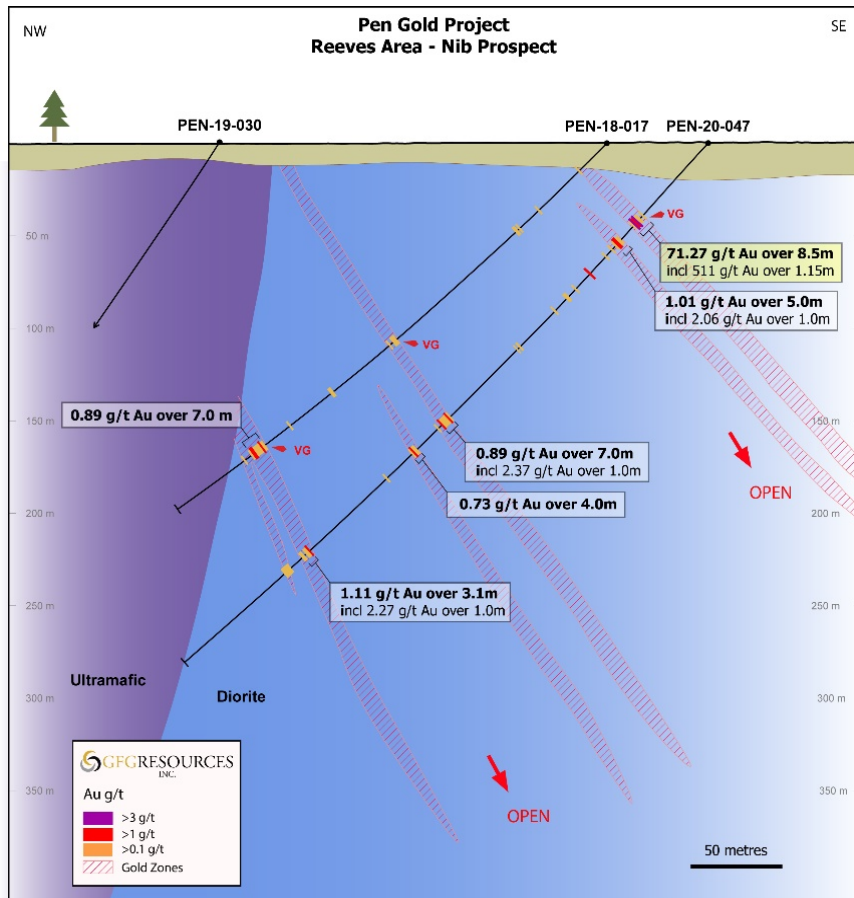
- **Camp scale target covering 4 x 6 km**
- Regional structural interpretation – PDFZ controlling southern contact of a Timiskaming basin
- Multiple Timiskaming conglomerate panels associated with second order structures - high strain zones
- Regional scale carbonate alteration & broad structural demagnetization
- **A New High-Grade Discovery at Nib**
 - **71.27g/t Au over 8.5m incl. 511.00 g/t Au over 1.15m**
- Northeast & east-west structures are fertile
- **A major focus of 2020 drill program**

*See footnote for QA/QC disclosure p.30

Nib Prospect

Discovery of a Significant High-Grade Gold System

- Q1 2020 drilling intersected a **new significant high-grade gold system** with **multiple zones of gold mineralization downhole**
- Hole PEN-20-47: **71.26 g/t Au over 8.5 m** including **511.00 g/t Au over 1.15 m**
- **Visible gold in multiple zones** of highly-altered diorite & a regional structural setting that includes sheared polymictic conglomerates
- **Shallow system** of sheeted quartz veining & associated sulphidation that **remains open in multiple directions**



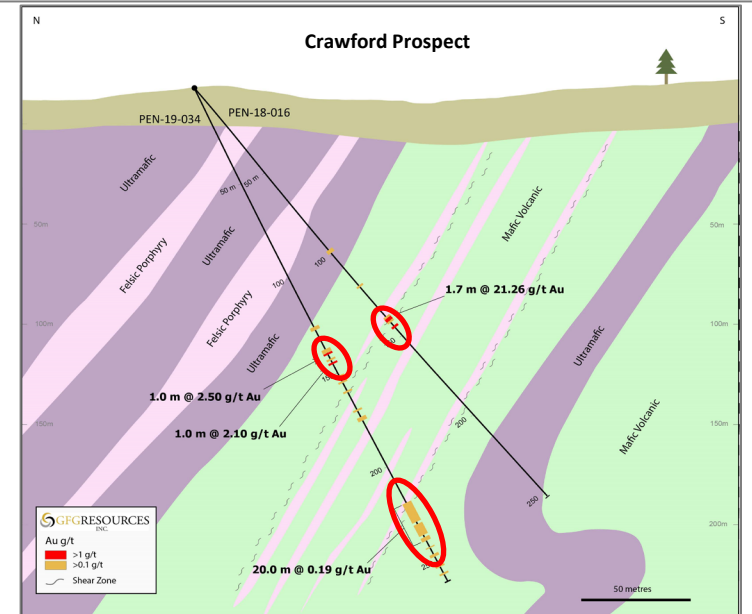
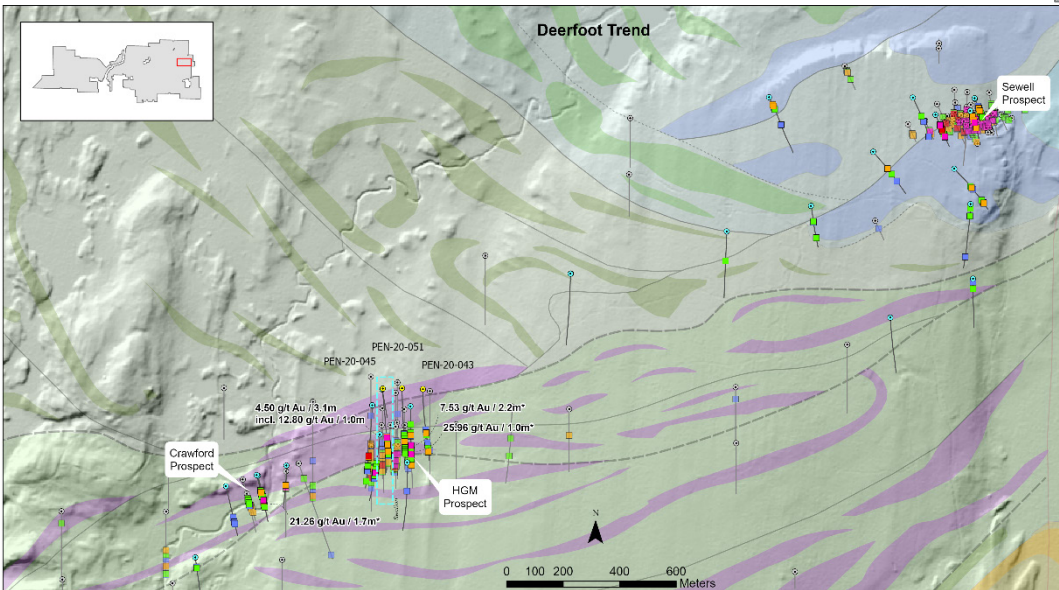
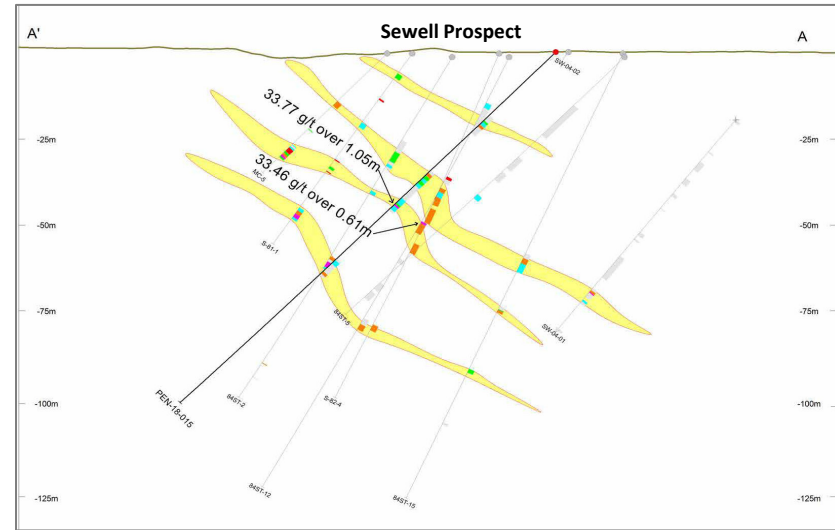
PEN-20-047 is the most significant intercept ever drilled on the 500 km² Pen Gold Project

*See footnote for QA/QC disclosure p.30

Deerfoot Targets

High-Grade Au Prospects: Sewell, HGM & Crawford

- Large target area (2 x 6 km) along the PDFZ with multiple second order parallel structures & fault splays
- 3 high-grade gold prospects discovered: Sewell, HGM & Crawford (recently discovered)
- Limited bedrock exposure hindered historic regional exploration efforts – only 2 DDH over a 1.5 km stretch of the PDFZ between Sewell & HGM prospects
- Sewell, HGM & Crawford remain priority targets with additional targets to be tested in future drill programs



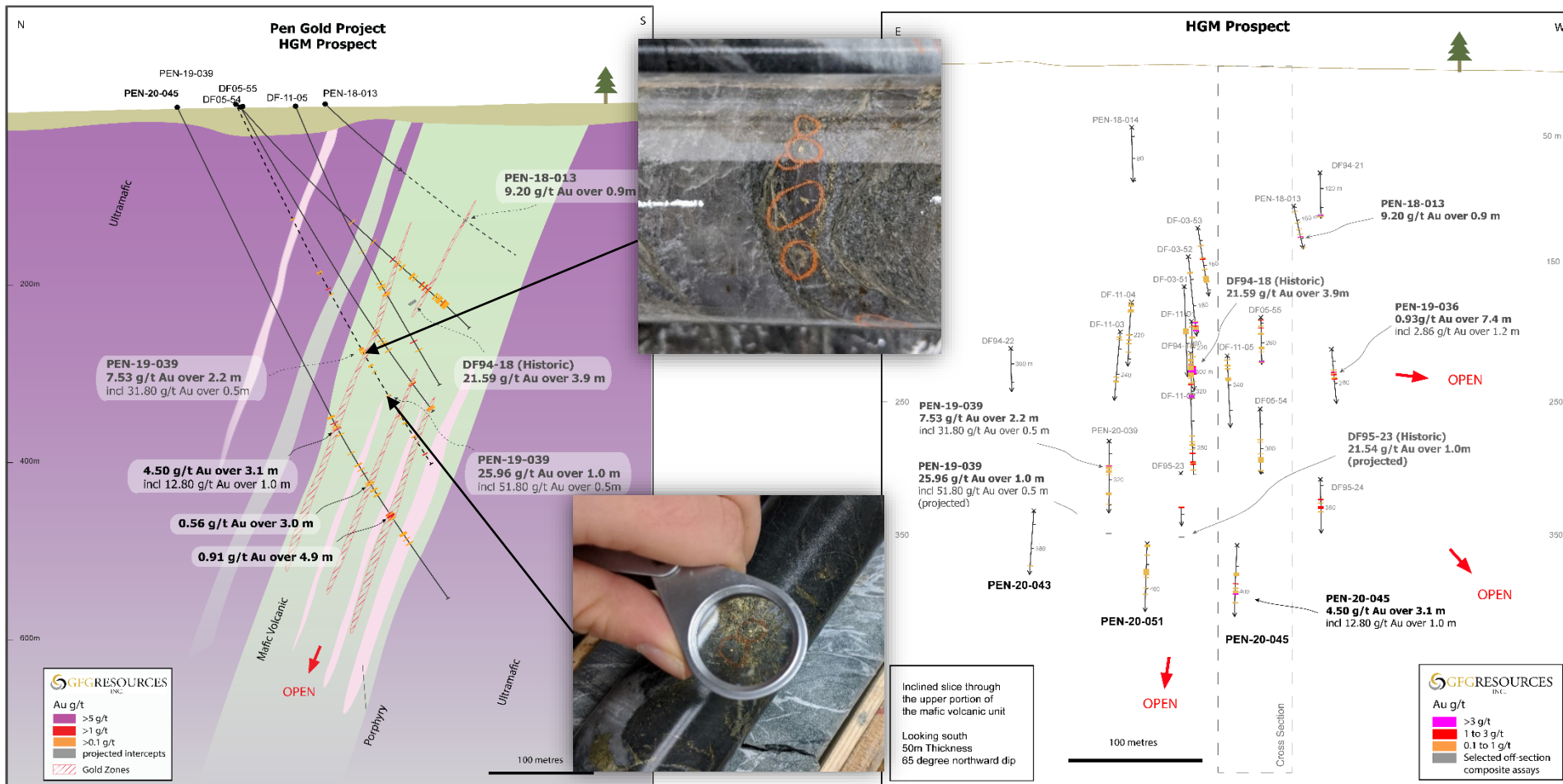
*See footnote for QA/QC disclosure p.30

Deerfoot – HGM

Located Along Porcupine-Destor Fault Zone

Multiple Zones of High-Grade Gold Mineralization

- Hole PEN-19-39 intersected stacked mineralized lenses highlighted: **7.53 g/t Au over 2.2 m & 25.96 g/t Au over 1.0 m**
- Drilling has traced gold mineralization down to a depth of 500 m

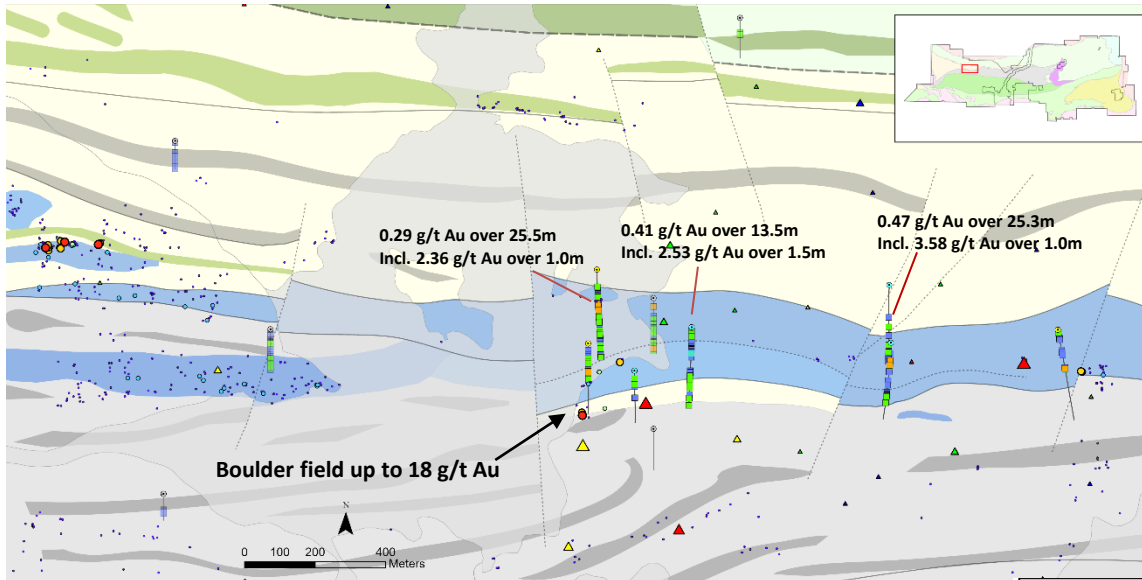
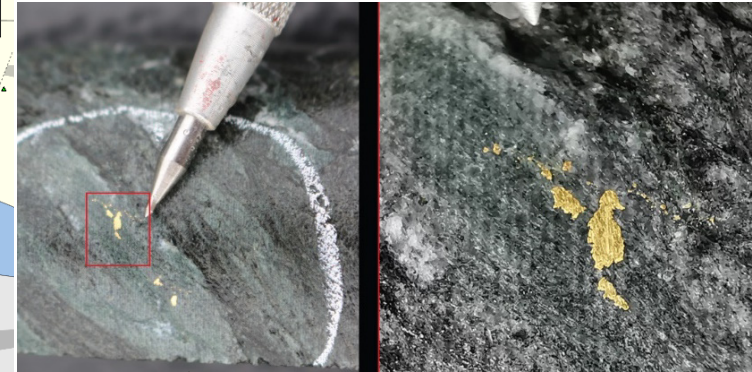


*See footnote for QA/QC disclosure p.30

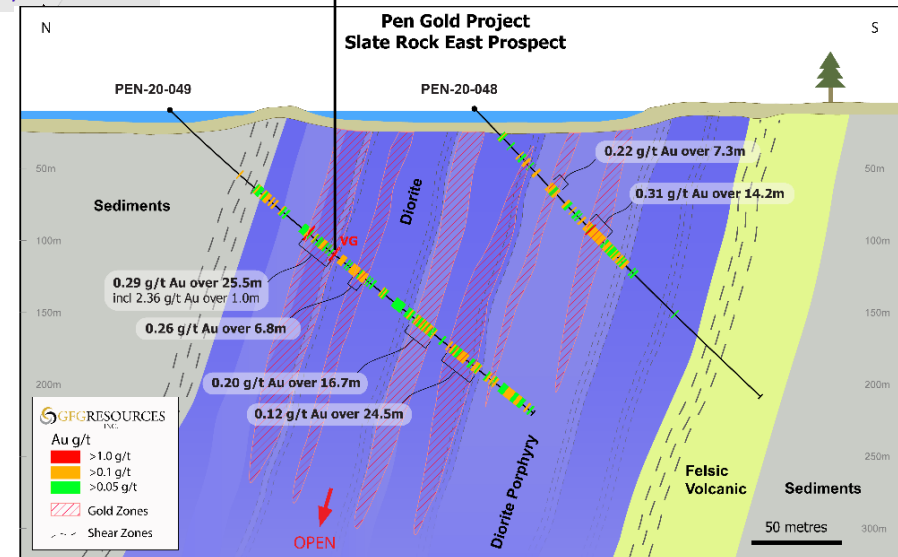
Slate Rock Target

Kilometre-Scale Intrusion Hosted Gold System

Assay = 1.38 g/t Au over 1.5 m



- **4 x 2 km target area** with limited historic exploration & drilling
- Structural model indicates multiple first & second order structures from E-W trending to NE-SW trending with broad pervasive alteration
- **High grade Au-in-rock & anomalous Au-in-till** occurs along key structures & lithologic contacts
- Hole PEN-20-49 intercepted a shallow shear-hosted, alteration zone hosting coarse gold
 - **Despite low grade this is a very significant occurrence**
- Further till sampling, prospecting & IP modelling to refine structures & identify additional drill targets



*See footnote for QA/QC disclosure p.30

Regional Targeting

Broadway Target

Historic trenching & drilling from the '60's w/o assays

Till Results:

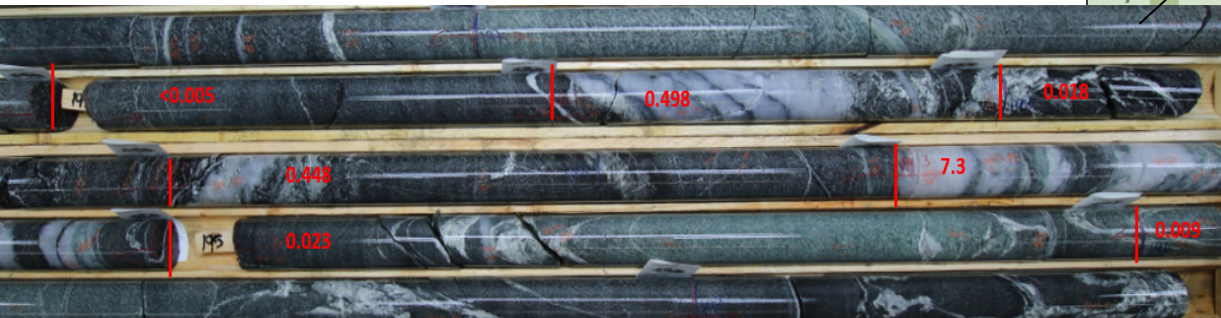
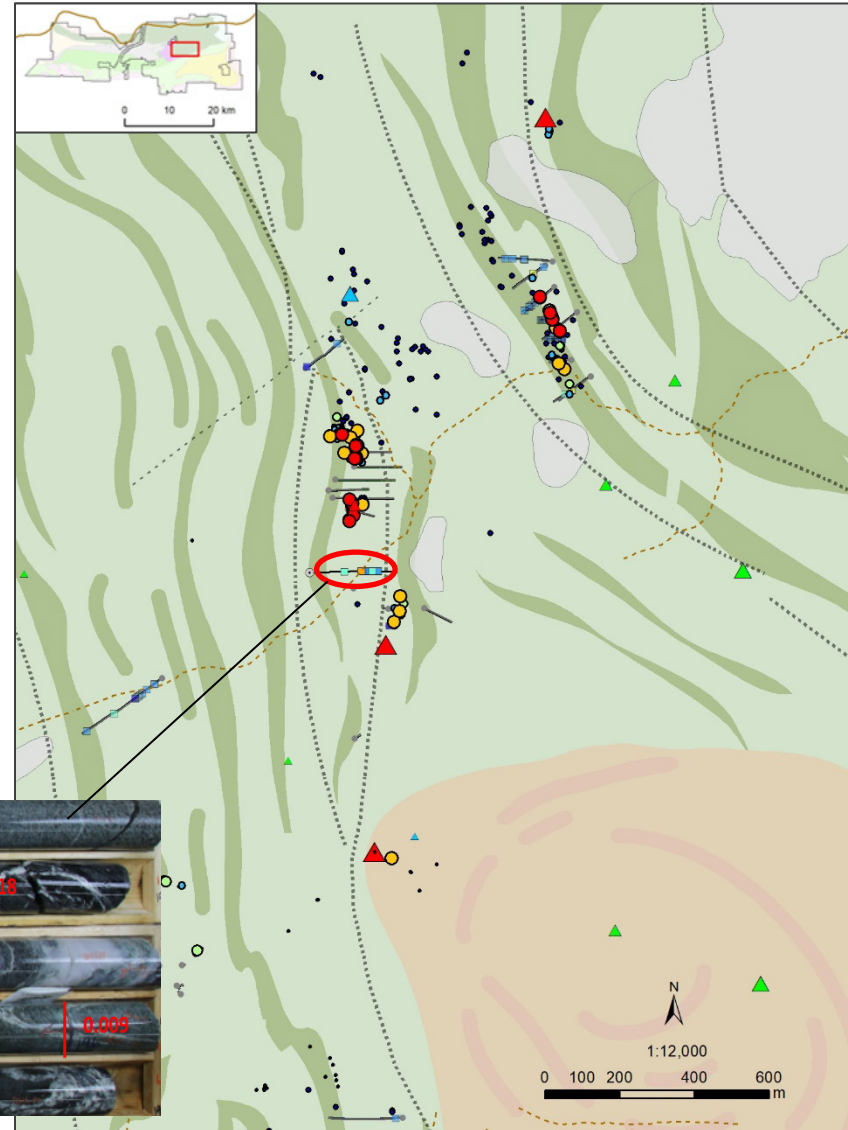
- High threshold regional till target confirmed with local follow-up
- Anomaly continues down-ice of 1 km corridor

Prospecting:

- N-S Sheeted vein system hosted in carb-altered diorite in 'shadow' of late felsic intrusive
- Total package mineralized on surface over > 40 m width
- FW mineralized with >1g/t Au in trenching to the south

Drilling:

- Tested with 250 m step-out hole in Q4 2019 program
 - Returned 3.65 g/t Au over 1.5 m (up to 7.3 g/t)
- Very strong structure & vein intensity
- Proposed follow-up in 2020 program: 1-2 holes



*See footnote for QA/QC disclosure p.30

Regional Targeting

Boundary Target

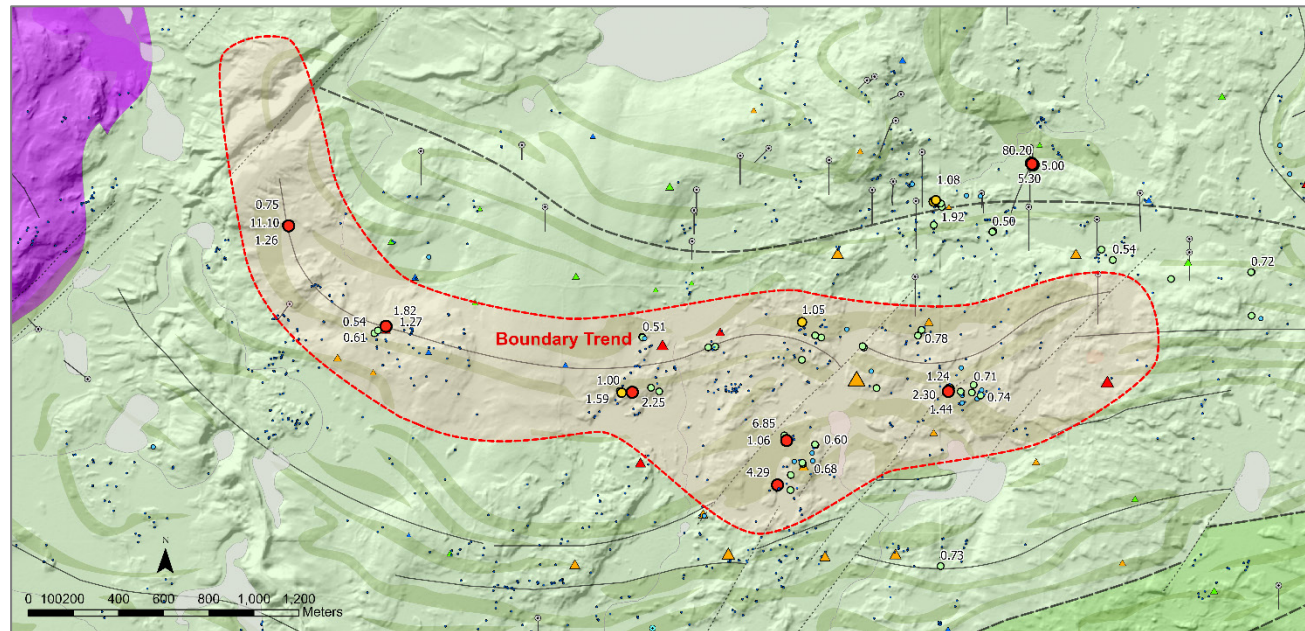
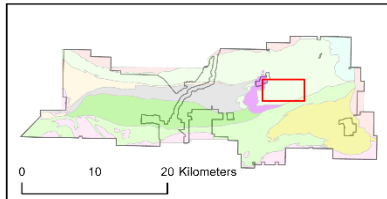
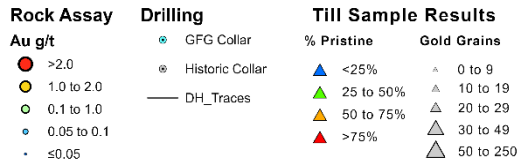
Boundary Trend Discovered by GFG in Q4 2019

Key Points:

- Prospecting has **discovered multiple new occurrences** with rocks > 1g/t (up to 11 g/t)
- Occurrences outline an E-W trend over **3 km long**
- Similar till pathfinder association to rocks implies same source
- Most likely multiple bedrock sources to anomaly
- Anomaly magnitude in extension is moderate & over a broad area
- Associated with E-W veining (*parallel regional fabric*) & intersection with NE-oriented structures – **its in the right structural setting**

Next Steps:

- Further prospecting, stripping & channel sampling – currently on-going
- First pass drill testing in H2 2020

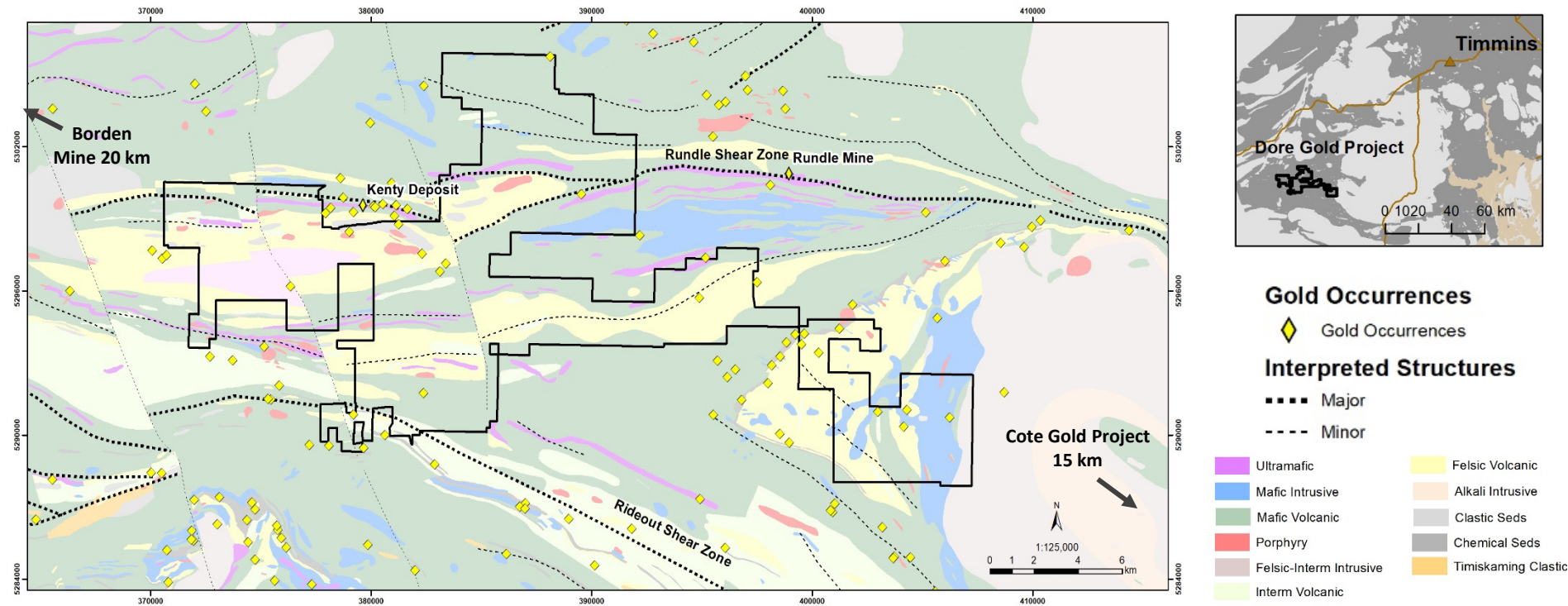


*See footnote for QA/QC disclosure p.30

Dore Gold Project

Geology

- **District scale** land package – 212 km²
- Located **in between the Borden gold project & the Cote Lake gold project**
- Highly prospective based on regional geophysical & geochemical data & presence of major E-W deformation zone (**Rundle Shear**) with associated & abundant porphyry intrusive bodies
- **Very limited modern exploration & drilling (only 59 drill holes documented)**
- **Next steps:** geophysical & geochemical surveys to build structural model & identify prospective trends

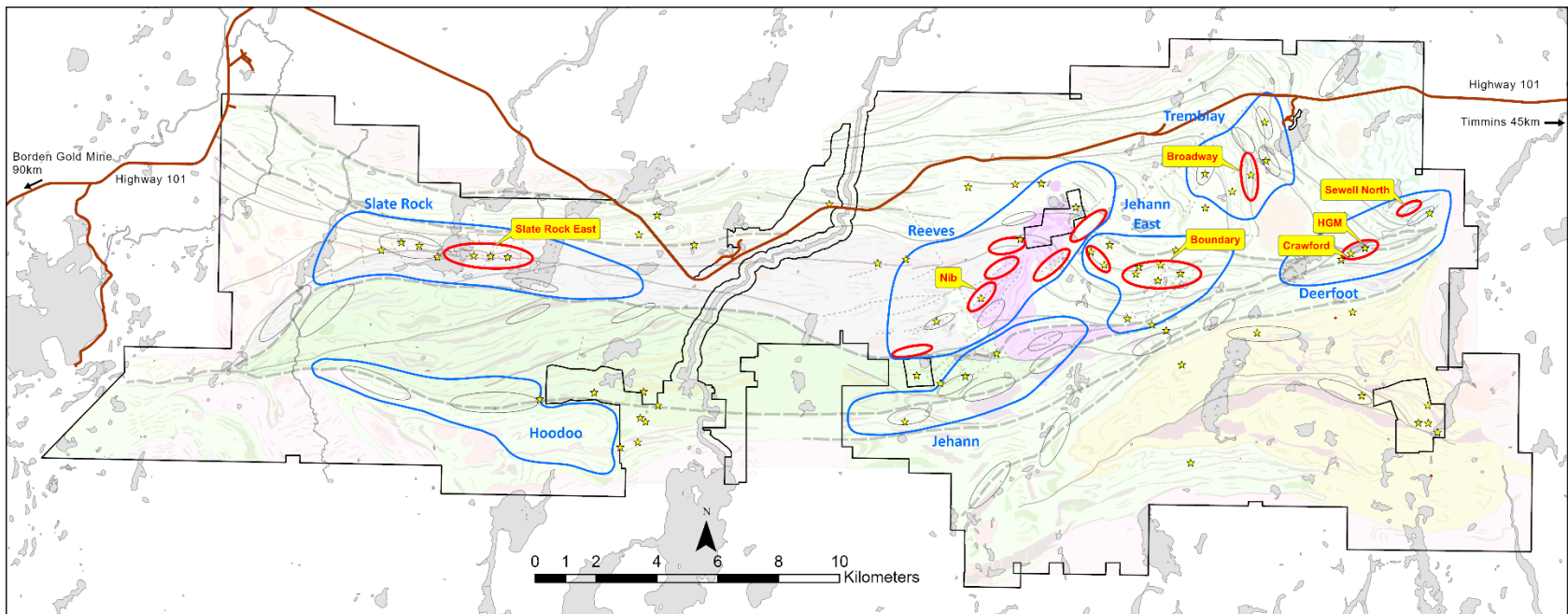


Exploration Programs

Activities Focused on the Pen Gold Project

Aggressive exploration program to discover the next Timmins gold mine

- 2020 budget doubled to ~C\$3.8 million
 - **Drill budget of 12,000 m:**
 - 3,500 m completed in Q1/20 testing Nib, HGM & Slate Rock prospects
 - 8,500 m in H2 2020 – **Red Targets** to see drilling with a primary focus on following up on Nib discovery
- Geophysical & geochemical surveys (till sampling, trenching, mapping & prospecting, IP & mag survey)





Rattlesnake Hills Gold Project, Wyoming U.S.

District Scale Gold Project Analogous to Cripple Creek & Wharf Deposits

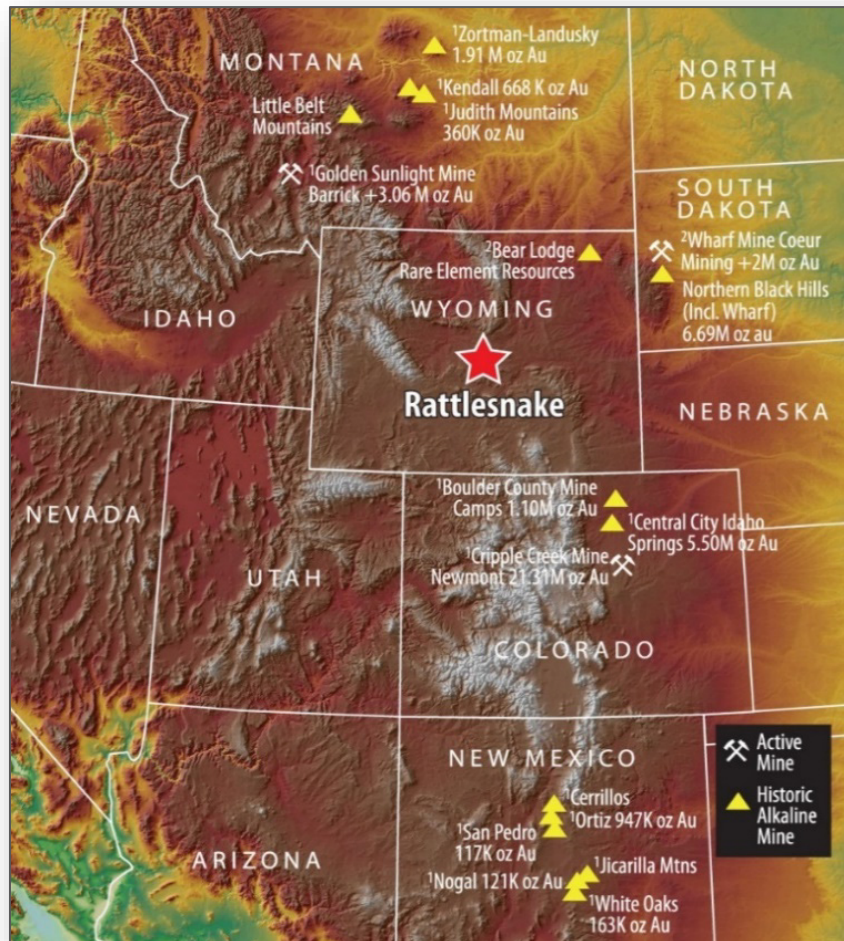


Prospective Gold Belt

Geology Analogous to Cripple Creek & Wharf Mines

District Scale Land Package

52 square miles | 30,400 acres | 135 square km



+USD\$40 Million Invested

102km of drilling focused on a small section of the property

Wyoming

One of the best jurisdictions for mining & exploration in the US

Geology

Analogous to Cripple Creek, Wharf & Golden Sunlight Mines

District Scale

Consolidated the entire district & have excellent infrastructure

Opportunity

To grow existing deposits & for discovery at greenfield targets

Newcrest Partnership

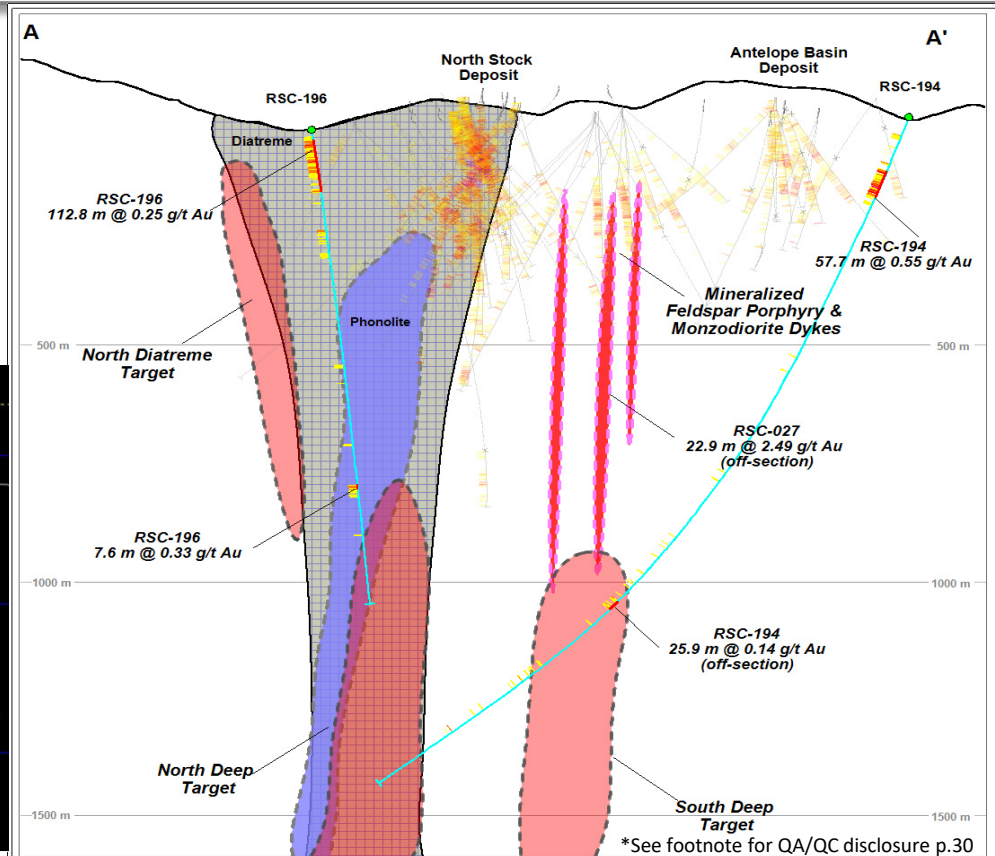
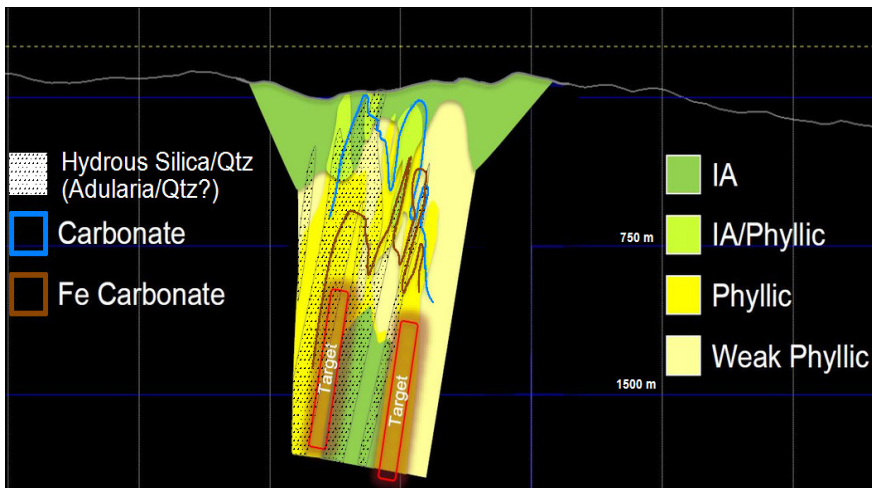
Focused on Deep Targeting for Bulk Tonnage

Exploration Program Overview

- Expenditure of ~US\$5 million funded by Newcrest: 4,800m of drilling
- Deep drilling intersected favourable geological & structural settings with low grade results
 - Expanded the North Stock & Antelope Basin systems at pitable depths in oxide
- Extensive re-modelling of existing geochemical & geophysical datasets & model-driven targeting
- Newcrest elected to withdraw from Agreement

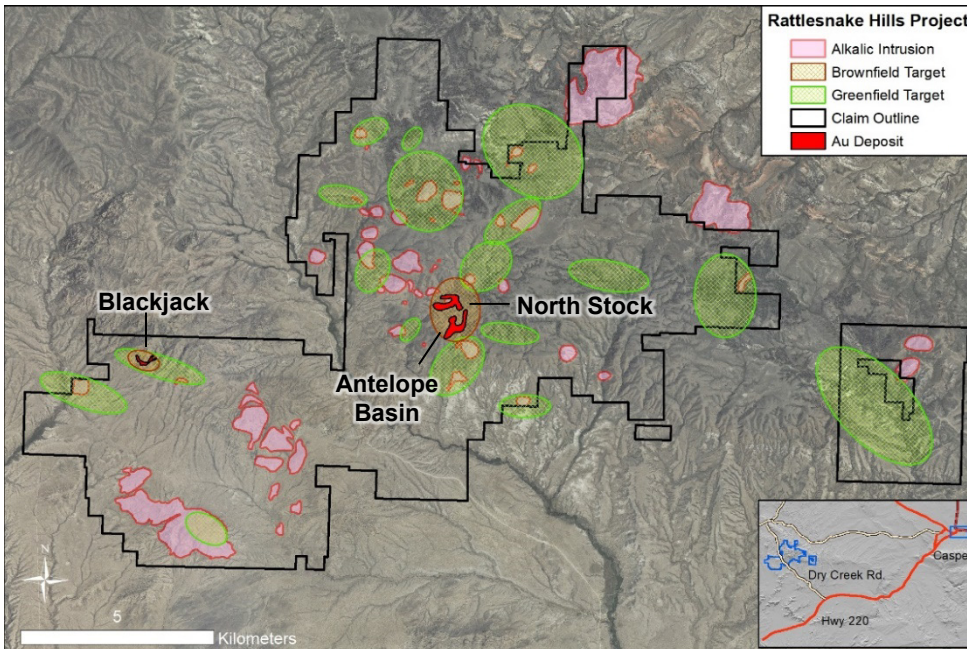
NEWCREST DRILLING FOCUSED ON DEEP TARGETS WITH TIER 1 SIZE POTENTIAL

MULTIPLE DRILL-READY, PERMITTED, BROWNFIELD &
GREENFIELD TARGETS ACROSS THE PROPERTY THAT REMAIN TO
BE TESTED



North Stock & Antelope Basin

Opportunity to Expand & Link Deposits



3 significant zones of gold mineralization

1. North Stock:

- Diatreme-hosted – 750m x 125m wide to a depth of 500m

2. Antelope Basin:

- Monzodiorite-associated - 350m x 50m wide to a depth of 250m

3. Blackjack:

- Rhyolite breccia-hosted along major structural corridor

Fertile Systems that Remain Open

Selected Highlight Drill Intercepts ⁽¹⁾

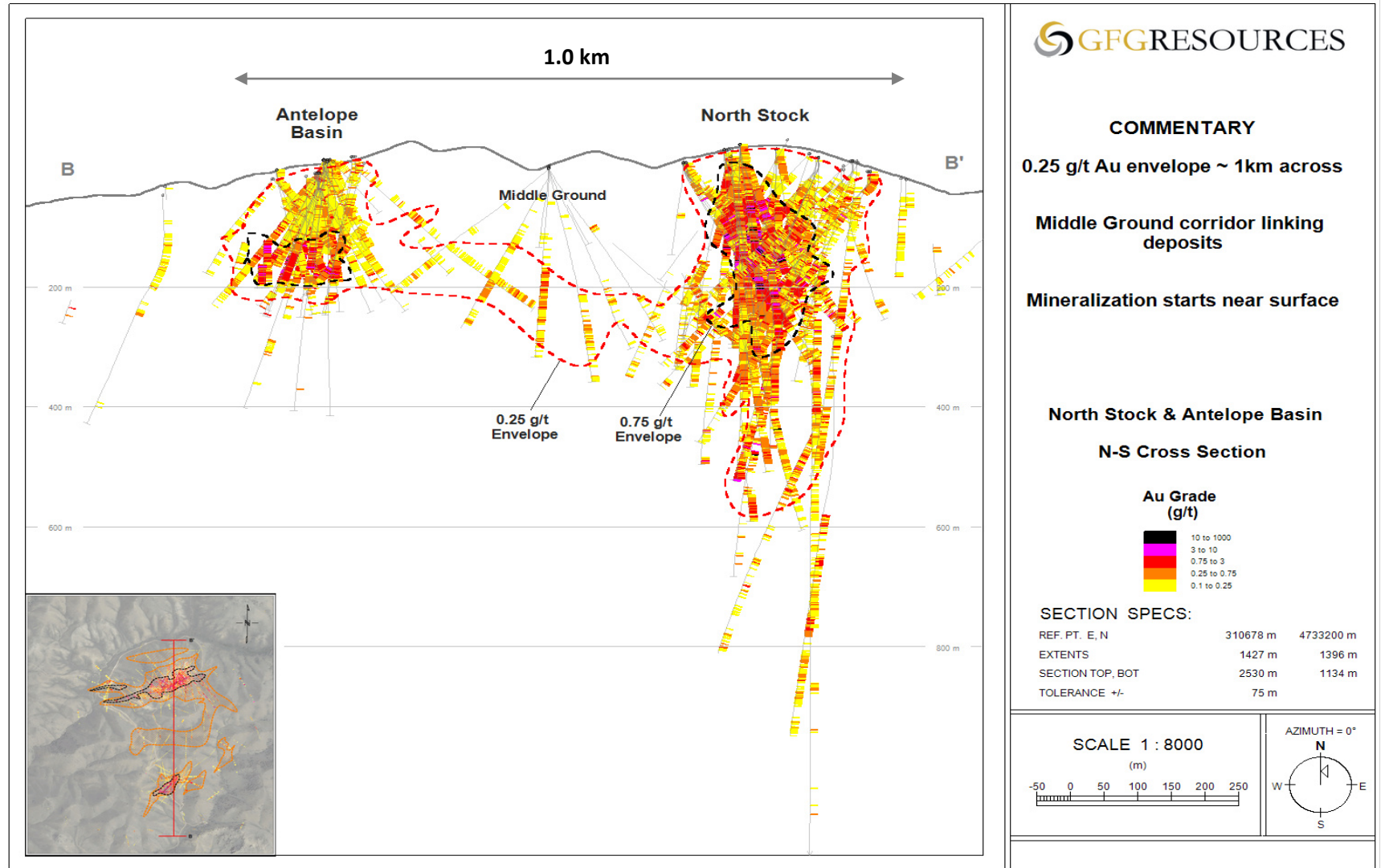
Hole	From (m)	To (m)	Length (m)	Au (g/t)	Target
RSC-007	108.20	344.36	236.16	1.85	North Stock
RSC-019	83.82	181.36	97.54	1.21	Antelope Basin
RSC-020	143.26	198.91	55.66	9.73	North Stock
Incl.	160.02	176.78	16.76	26.21	
RSC-039	25.91	176.78	150.88	2.08	North Stock
RSC-042	147.83	224.03	76.20	1.91	Antelope Basin
RSC-089	83.82	213.36	129.54	2.08	North Stock
RSC-089	216.41	243.84	27.43	7.85	North Stock
RSC-132	112.78	329.18	216.41	1.58	North Stock
RSC-135	83.82	160.02	76.20	4.68	North Stock
Incl.	144.78	147.83	3.05	45.30	
RSC-141	30.48	172.21	141.73	1.90	North Stock
RSC-144	205.74	251.46	45.72	3.23	North Stock
RSC-145	137.16	192.02	54.86	3.20	North Stock
Incl.	143.26	147.83	4.57	15.67	
RSC-145	204.22	281.94	77.72	4.20	North Stock
Incl.	239.27	240.79	1.52	128.00	

(1) Gold intervals reported are based on a 0.20 g/t or 0.50 g/t Au cutoff. Weighted averaging has been used to calculate all reported intervals. True widths are estimated at 60-100% of drilled thicknesses.

*See footnote for QA/QC disclosure p.30

The Big Picture

A Large-Scale Alkalic Gold System

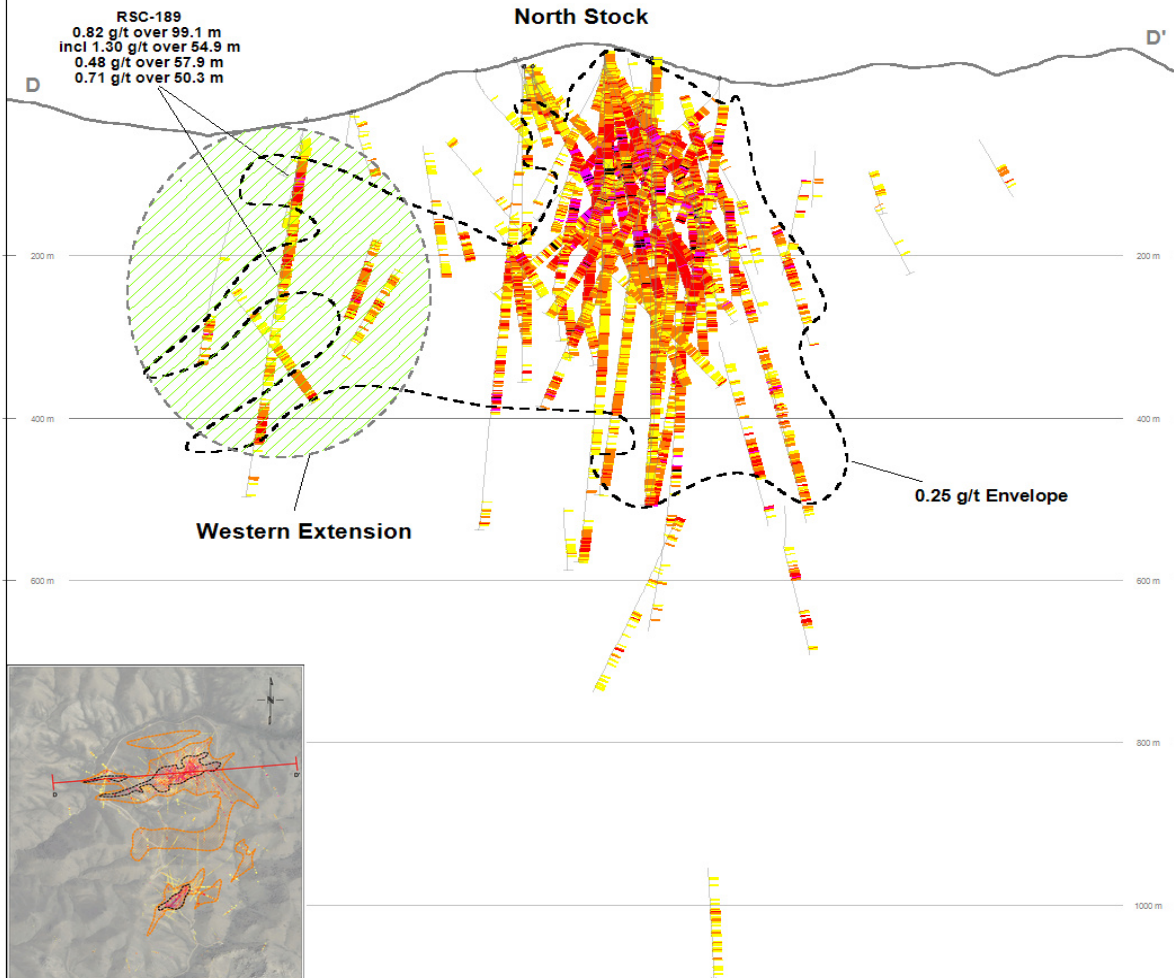


*See footnote for QA/QC disclosure p.30

North Stock

Large Footprint & Growing

Last step-out hole drilled by GFG



COMMENTARY

Western Extension hosts multiple mineralized panels at pittable depth

Remains open & links with the main North Stock diatreme

Recent step-out drilling extended mineralization >175 m

North Stock Longitudinal Section

Western Extension

Au Grade (g/t)

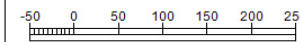


SECTION SPECS:

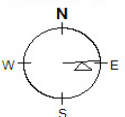
REF. PT. E, N	310636 m	4733574 m
EXTENTS	1338 m	1309 m
SECTION TOP, BOT	2481 m	1172 m
TOLERANCE +/-	37.5 m	

SCALE 1 : 7500

(m)



AZIMUTH = 85°



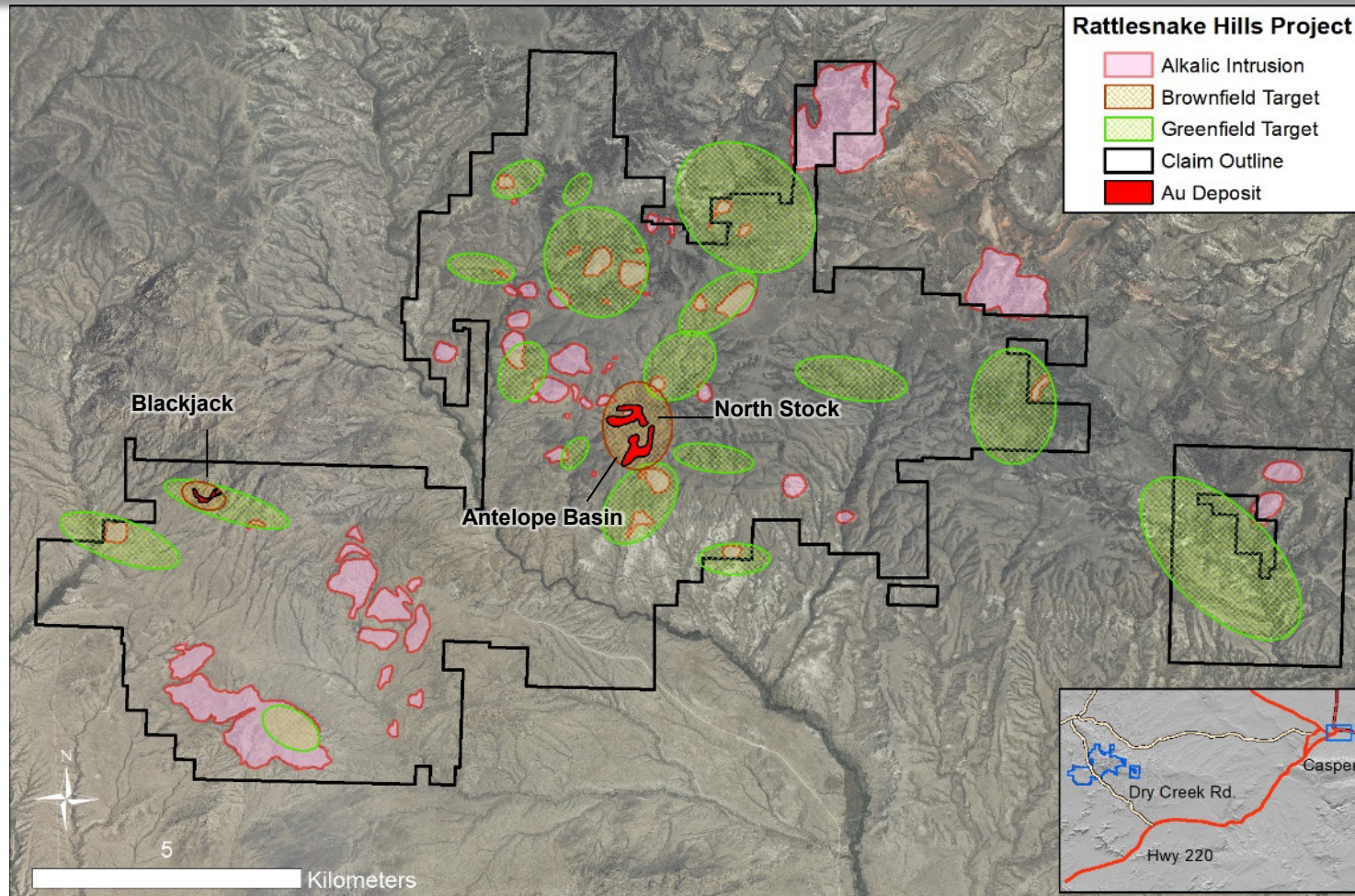
*See footnote for QA/QC disclosure p.30

This Is An Alkaline Gold District

Brownfield & Greenfield Opportunities

Multiple Opportunities for Growth & Discovery.....

A Target-Rich Environment That Warrants An Aggressive Exploration Approach



Invest in GFG For.....



Exposure to *district scale assets* in *world class jurisdictions*



Our *technical team* that has a proven track record



Our *ability to finance* projects



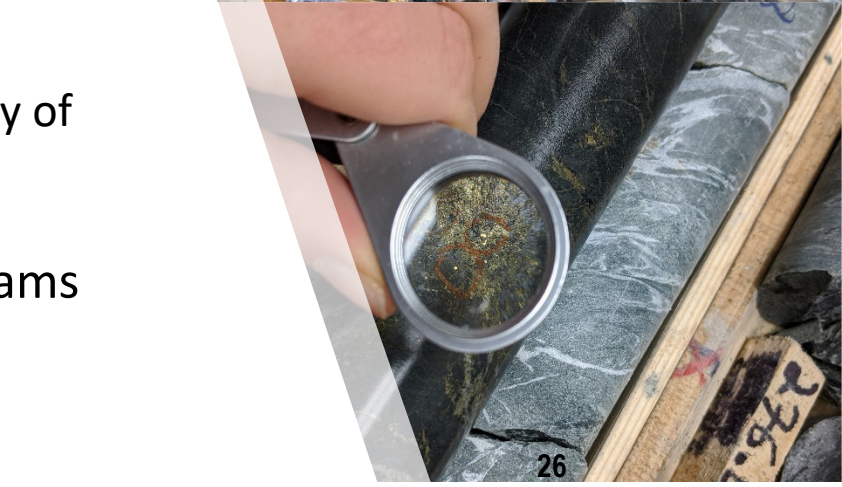
Our promise to *maximize \$'s in the ground*



Growing our Nib discovery & the opportunity of *finding the next Timmins Gold Mine*



Fully-funded aggressive exploration programs & a *catalyst rich 2020*





Contact Us:

Marc Lepage, VP Business Development
202- 640 Broadway Ave
Saskatoon, SK Canada S7N 1A9
marc@gfgresources.com
306-931-0930

Stay Informed & Connected

www.gfgresources.com



VRify

Executive Team

Biographies



Brian Skanderbeg, P.Geo. - President & CEO, Director

Mr. Skanderbeg was most recently President & CEO of Claude Resources Inc. which was acquired by SSR Mining for \$337 million. He previously worked for Goldcorp, Inco Ltd. & Helio Resources, holding positions in both exploration & operations. Mr. Skanderbeg is also a director of Wesdome Mines. He holds a B.Sc. from the University of Manitoba & an M.Sc. from Rhodes University, South Africa. He brings extensive experience in gold systems, operational management, cost and asset optimization & strategic analysis.

Rick Johnson, CPA. - CFO & Corporate Secretary

Mr. Johnson has over 25 years of experience in accounting, audit, tax & corporate governance. Most recently, Mr. Johnson was the CFO, Vice President of Finance and Corporate Secretary with Claude Resources Inc., which was acquired by SSR Mining in 2016. Mr. Johnson holds a Bachelor of Commerce degree from the University of Saskatchewan and is a member of CPA Canada.

Tim Brown - Vice President, Exploration U.S.

Prior to joining GFG Resources, Mr. Brown enjoyed a 21-year career at Cripple Creek & Victor Gold Mining Company. During this time he spent nine years as Exploration Manager, during which time 6.4 million ounces of gold were added to the resource, including 4.1 million added to reserves. He also held positions as Chief Geologist, Sr. Geologist, Ore Control Geologist & Exploration Geologist. Prior to his time at Cripple Creek he has 10 years of additional experience as an exploration geologist. He holds a B.Sc degree in Geology from Southern Methodist University, a M.Sc in Geology from the University of Minnesota & a MBA from the University of Colorado.

Rob Mackie, P.Geo. - Vice President, Exploration Canada

Mr. Mackie has over 12 years of experience in mineral exploration with major, mid-tier, & junior mining companies. Prior to joining GFG, he was a principal consultant geologist with CSA Global & a senior project geologist with Anglo American. Through these roles, he has built a strong foundation in the operational & technical aspects of designing & executing exploration programs primarily in Canada. Mr. Mackie has a strong background in the interpretation of geochemical data & considerable experience in data integration & multi-disciplinary targeting. He holds a B.Sc. from the University of Manitoba & a M.Sc. from the University of British Columbia.

Marc Lepage, CPIR. - Vice President, Business Development

Prior to joining GFG Resources, Mr. Lepage spent nearly eight years with Claude Resources Inc. as Manager, Investor Relations which was acquired by SSR Mining in 2016. Prior to his position with Claude, Mr. Lepage held marketing & business development positions in the consumer products & financial sectors. Mr. Lepage holds a B.Comm. from the University of Saskatchewan & a Certified Professional Investor Relations designation from the Richard Ivey School of Business.

Board of Directors

Biographies



Patrick Downey, P.Eng. - Non-Executive Chair

Mr. Downey has over 25 years of international experience in the resource industry. Mr. Downey has significant executive & board experience which includes, Claude Resources, Victoria Gold, Dalradian Resources, Elgin, Viceroy, Aura & is currently the President & CEO of Orezone. He has also held numerous senior engineering positions at several large-scale gold mining operations. He holds a B.Sc. (Hon.) degree in Engineering from Queen's University in Belfast, Ireland.

Stephen de Jong, B. Comm. - Director

Mr. de Jong was most recently President & CEO of Integra Gold Corp., which was acquired by Eldorado Gold Corp. in July 2017. Under his leadership, Mr. de Jong advanced the Lamaque project towards production & was instrumental in the financing of the Company, having raised \$100 million in equity since assuming the CEO position. Mr. de Jong is currently the CEO of Vrfy Technologies & Chair of Integra Resources. Mr. de Jong holds a Bachelor of Commerce degree from Royal Roads University.

Arnold Klassen, CPA - Director

Mr. Klassen is a CPA with over 35 years of experience in accounting, audit & tax, of which includes over 30 years of experience in the mining industry. Mr. Klassen is currently President of AKMJK Consulting Ltd. & prior to that was the Vice President of Finance for Dynatec Corp.. Mr. Klassen has significant board experience which includes, Lake Shore Gold, Claude Resources & Northern Superior Resources & is currently a director of Kirkland Lake Gold Ltd. He holds a degree in Commerce from the University of British Columbia & has obtained the Institute of Corporate Directors ICD.D designation.

Brian Booth, P.Geo. - Director

Mr. Booth brings more than 30 years of experience in mineral exploration throughout Canada, Europe & southeast Asia. He began his career as a geologist on the Casa Berardi gold discoveries in Quebec. He opened Inco's exploration office in Val d'Or & is credited with the discovery of the Douay West gold deposit in 1990. As Inco's Manager Exploration, Eastern North America, he conducted the preliminary assessment of the Voisey's Bay Ni-Cu-Co discovery & later was involved in the discovery of the Beutong copper porphyry in Indonesia. He also served as CEO, President & Director of Lake Shore Gold, where he completed the acquisition of the Bell Creek mine & mill & led the team that discovered the Timmins West, Thunder Creek & Bell Creek deep deposits. Most previously, he was CEO & Director of Pembroke Copper, where he led the team that discovered & advanced the Pecoy porphyry in Peru. He is currently the President & CEO of Element 29 Resources & serves on the board of SSR Mining. He holds a B.Sc. in Geology from McGill University & is a member of the Professional Geoscientists of Ontario.

1. Sampling and Quality Control: Till Samples were collected from hand-dug pits by experienced samplers at depths up to 1 meter in a grid pattern with nominal spacing of 500 by 1000m in areas of till cover. Geochemical samples (~2 kilograms) were sieved to minus 230 mesh and analyzed for gold and multi-element using an aqua regia digestion and ICP-ES/MS finish by Bureau Veritas Commodities Canada Ltd. in Vancouver in facilities accredited by the Standards Council of Canada. Gold grains were separated from bulk till samples (~10 kilograms) at IOS Services Geoscientifiques Inc. using their ArtPhot optical recognition methodology. Composition of separated gold grains were confirmed using a Scanning Electron Microscope. Comparison of geochemical results with accepted values for inserted certified reference materials confirms the accuracy of gold concentration results.

Till is a transported surficial media produced during active glaciation that is affected by subsequent surficial process that may affect the gold content and lead to further transport. As such the occurrence of a gold anomaly in till is not conclusive evidence of a mineral deposit existing within the Property.

Sampling protocol, quality control and assurance measures and geochemical results related to documented historic till, rock grab, and drill core samples have not been verified by the Qualified Person. However, the grades and locations of these samples have been cross referenced with available maps and reports and GFG believes them to be of reasonable accuracy.

2. Quality Analysis and Quality Control: The quality analysis and quality control measures utilized by Evolving Gold Corp. in respect of the historical drilling data disclosed above included the following: drill hole intervals were weighted averages with each assay interval weighted according to the core length. Rigorous quality assurance and quality control procedures were implemented including routine insertion of internal standard reference materials, certified reference materials, blank material and duplicate samples from both crush and pulp material. Gold assays were completed by SGS Canada Inc. in Toronto, using a 30-gram charge, fire assay, with an ICP finish. SGS Canada laboratory in Toronto is ISO accredited.

3. Gold intervals reported are based on a 0.20 g/t or 0.50 g/t Au cutoff. Weighted averaging has been used to calculate all reported intervals. True widths are estimated at 60-100% of drilled thicknesses.