

# TECHNICAL ANALYSIS

February 3, 2017



# TECHNICAL ANALYSIS

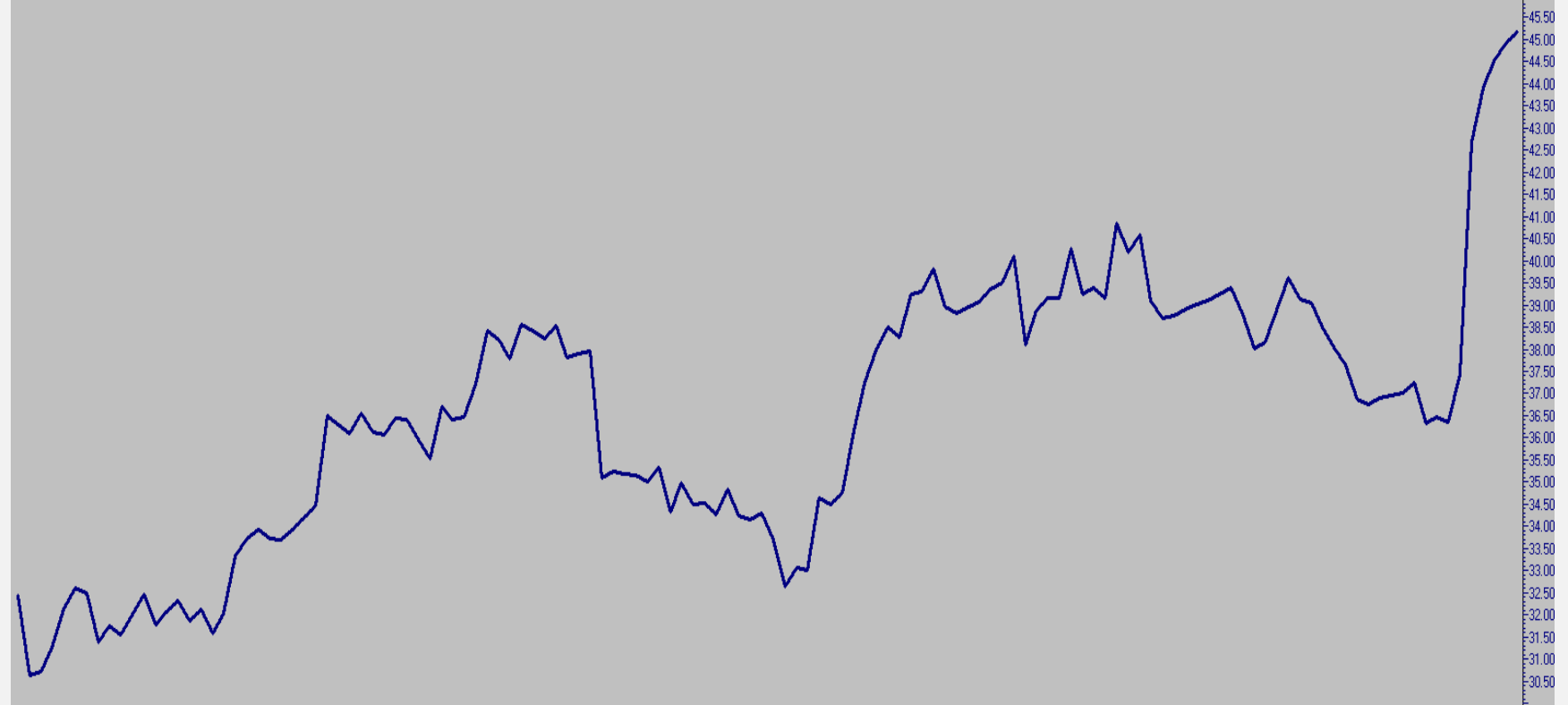
- 1) Market action discounts everything.
- 2) Prices move in trends.
- 3) History repeats itself.

## Basic Charting Concepts

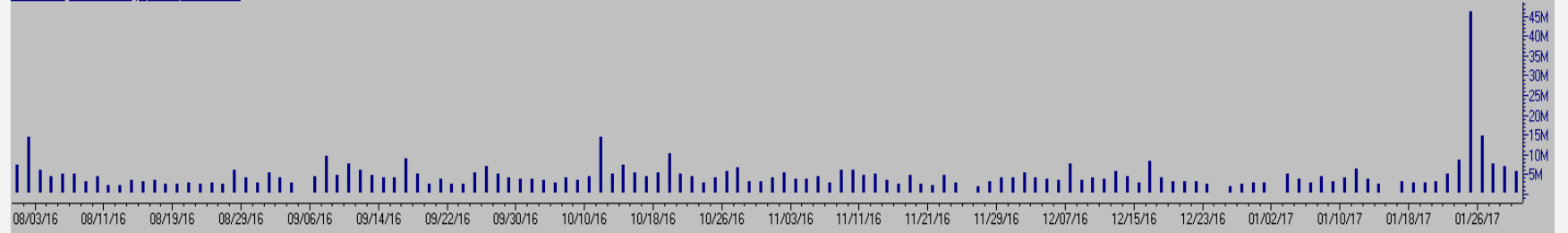
- Line vs Candlesticks
- Trends (Support and Resistance, Channels and Reversals)
- Common Patterns (Multiple Tops and Bottoms, Head and Shoulders, Penants)
- Moving Averages (simple and exponential, 50 day, 200 day and death cross)
- Relative Strength Index
- Moving Average Convergence/Divergence (MACD)

# LINE CHART

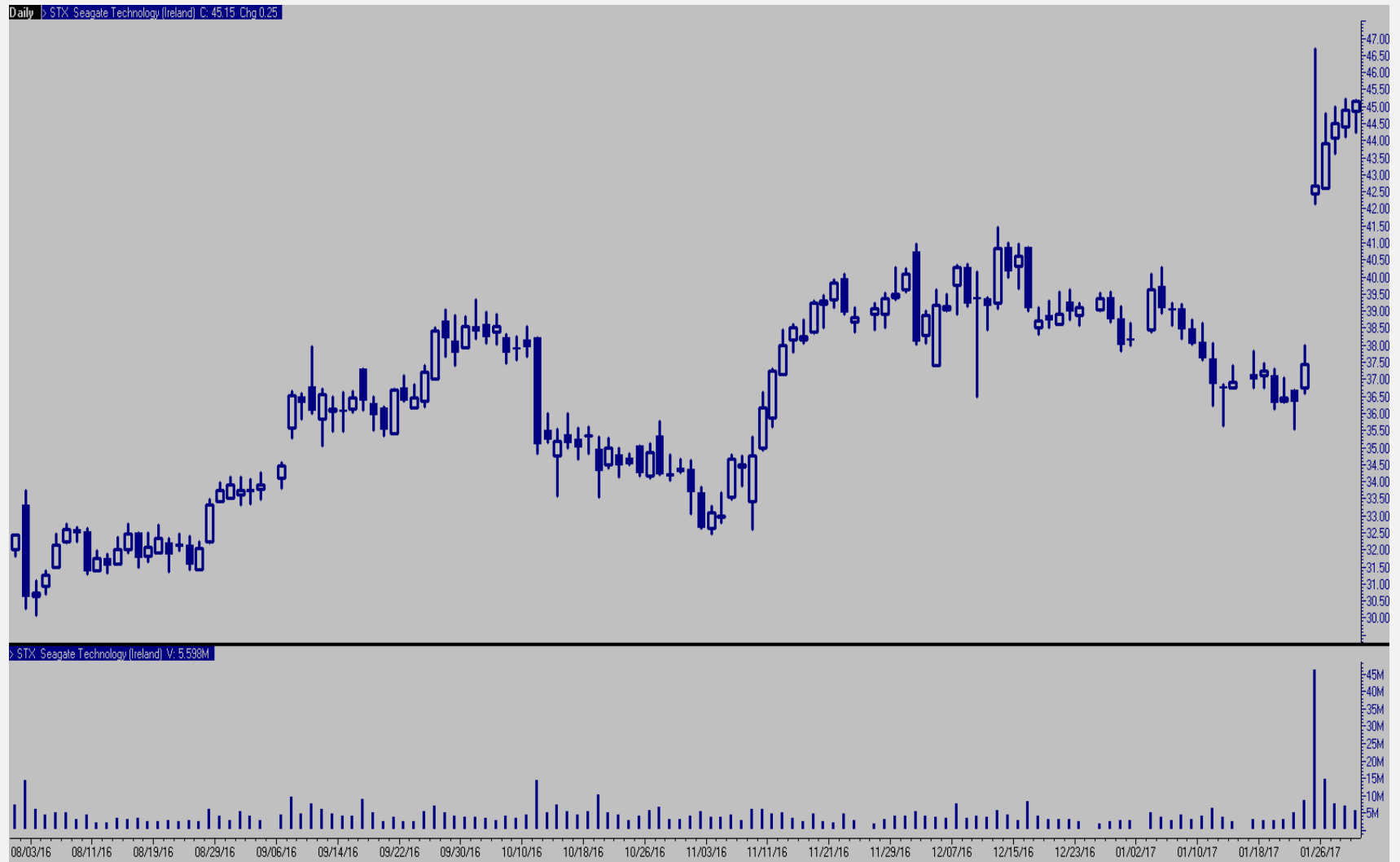
Daily STX Seagate Technology (Ireland) C: 45.15 Chg 0.25



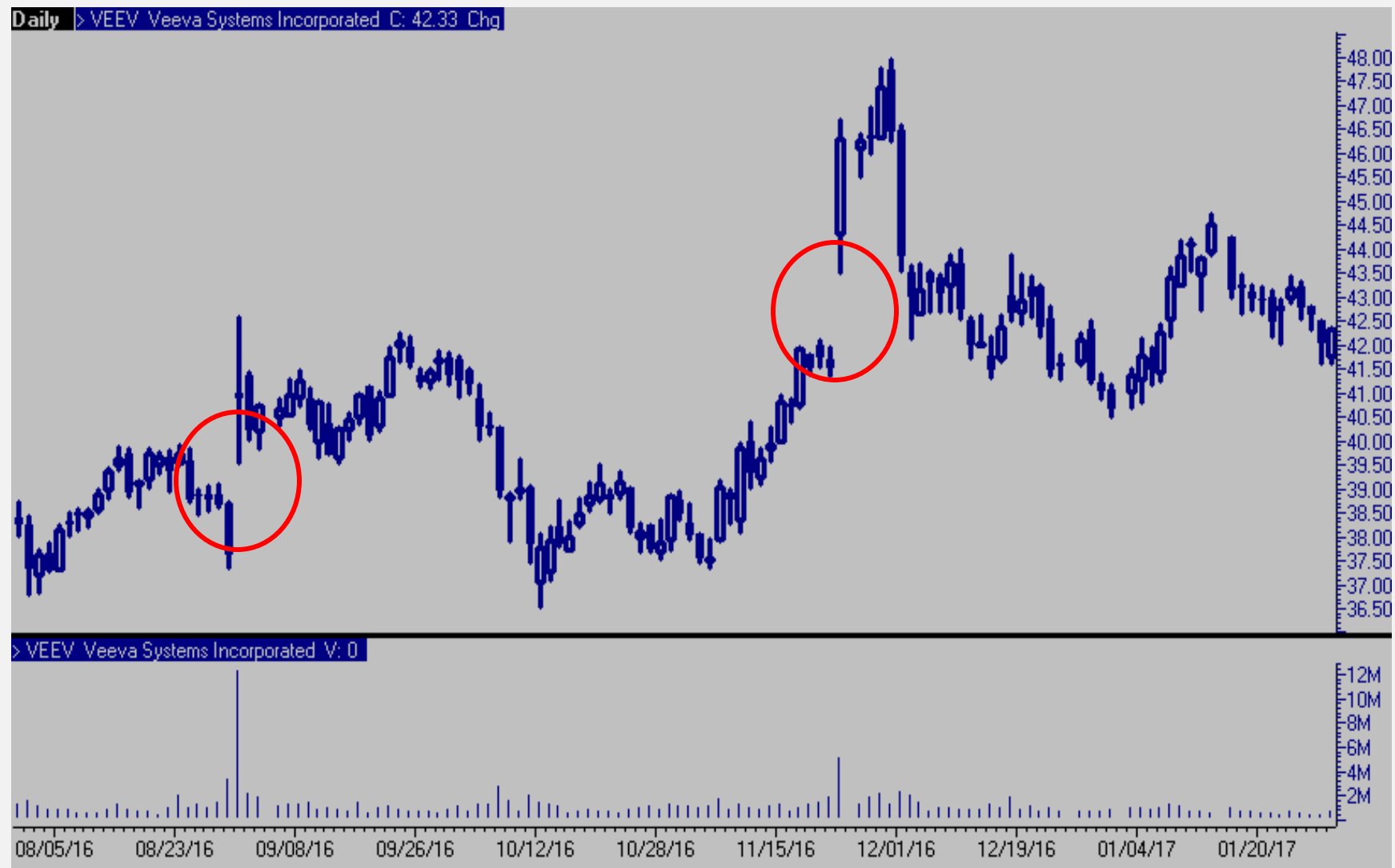
STX Seagate Technology (Ireland) V: 5.598M



# CANDLESTICK CHART



# CANDLESTICK CHART: TRADING GAPS



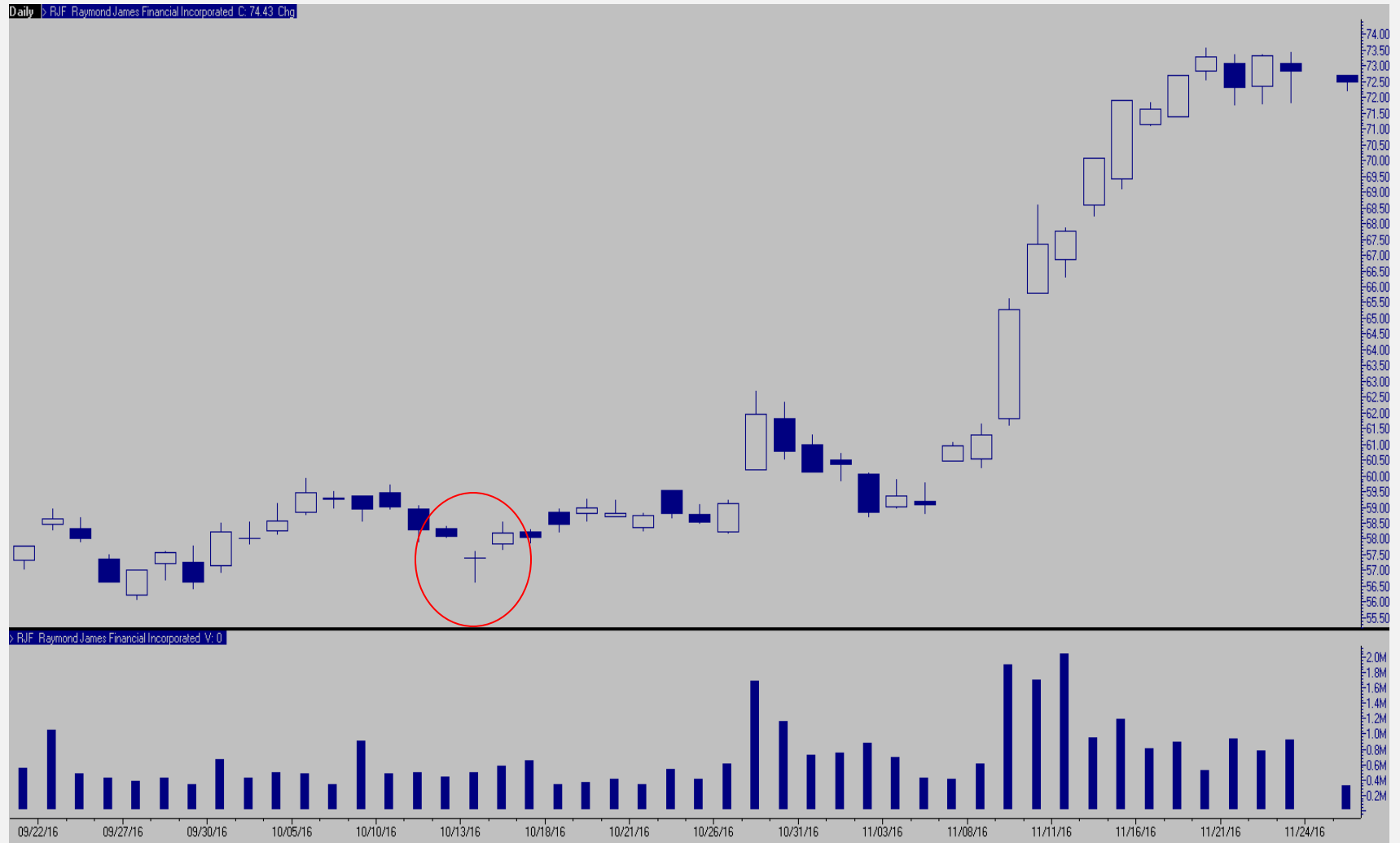
# CANDLESTICK CHART: BULLISH AND BEARISH ENGULFING



# CANDLESTICK CHART: HAMMER REVERSAL

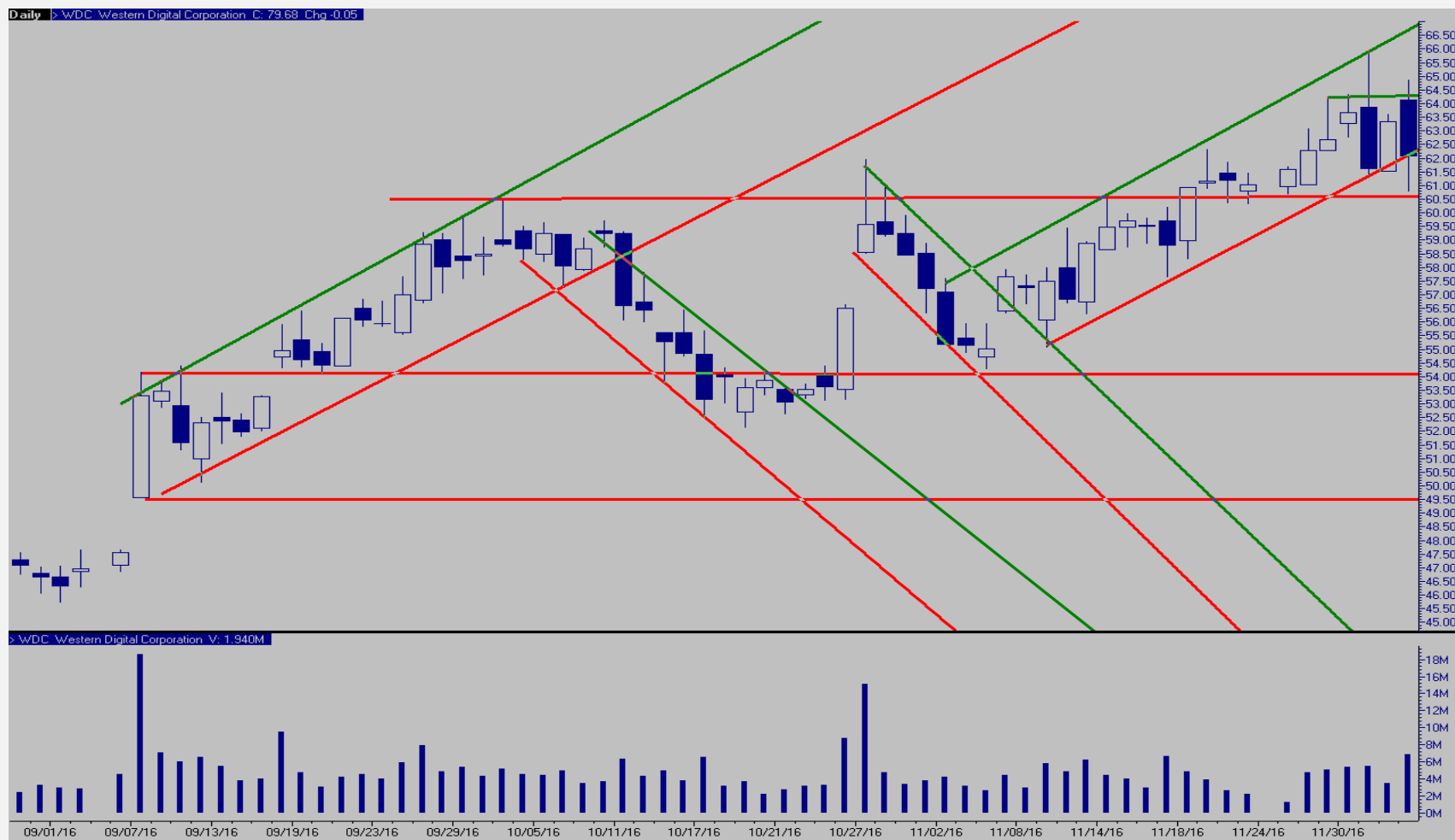


# CANDLESTICK CHART: DOJI CANDLESTICK

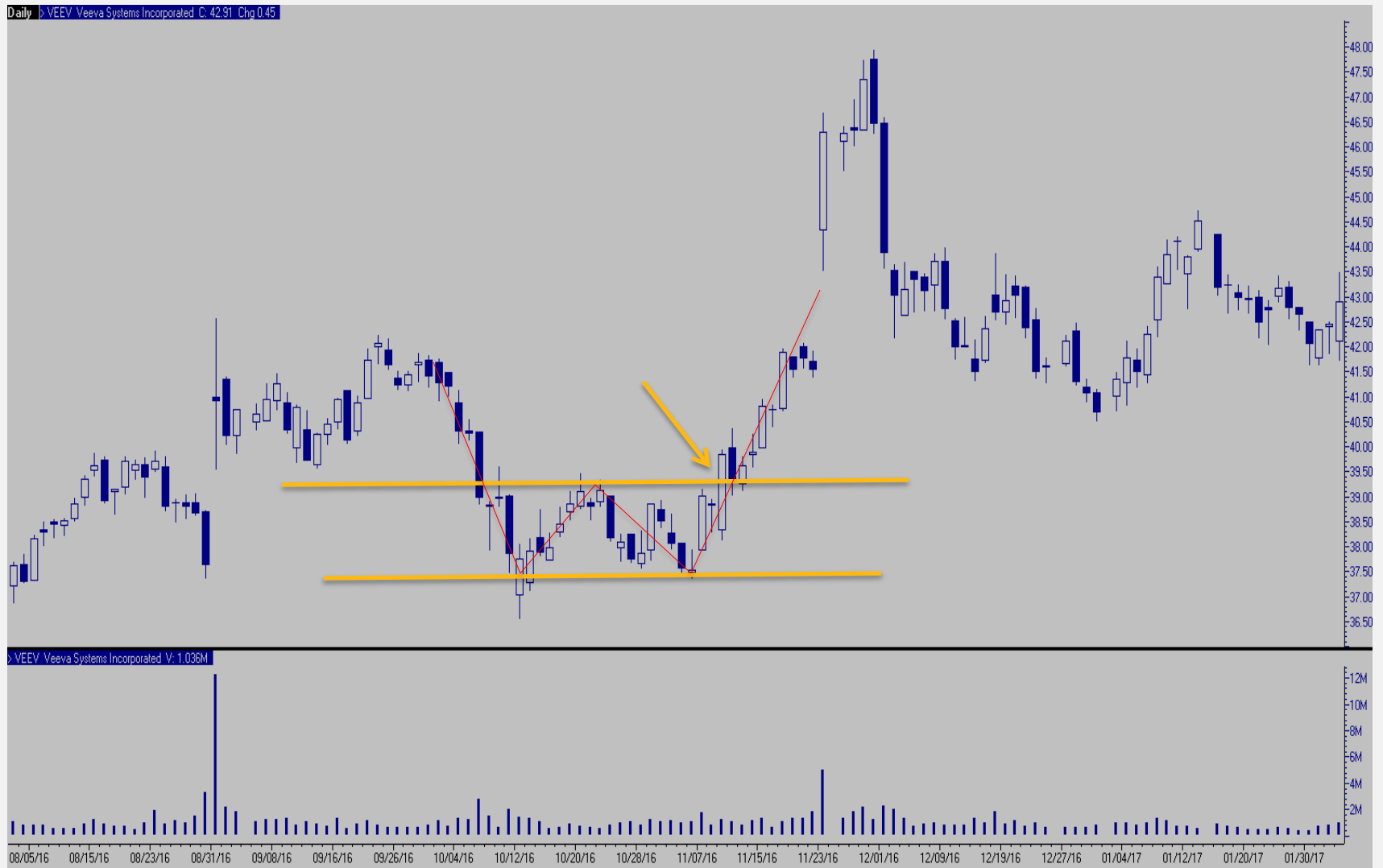




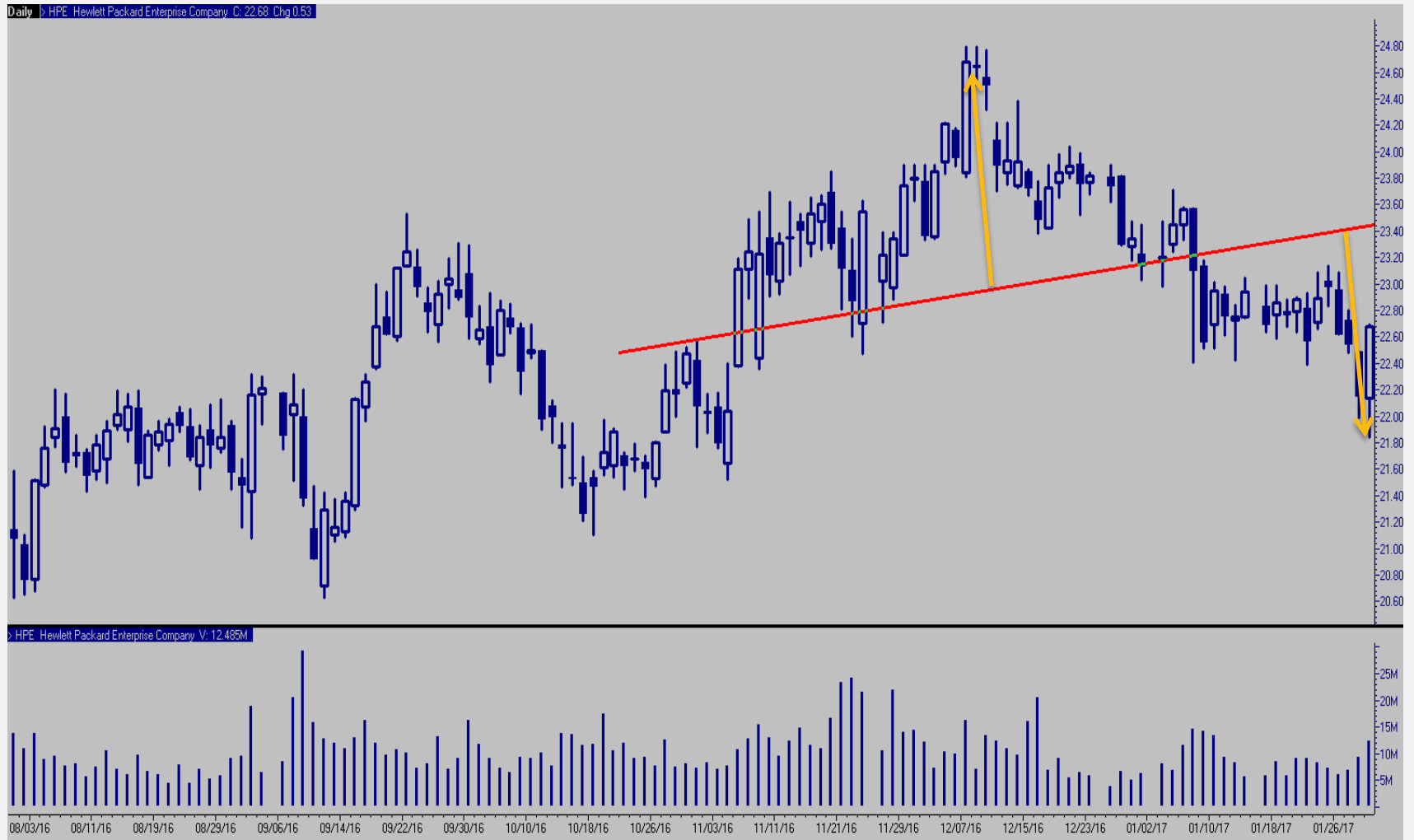
# TRENDS: SUPPORT AND RESISTANCE, CHANNELS, REVERSALS



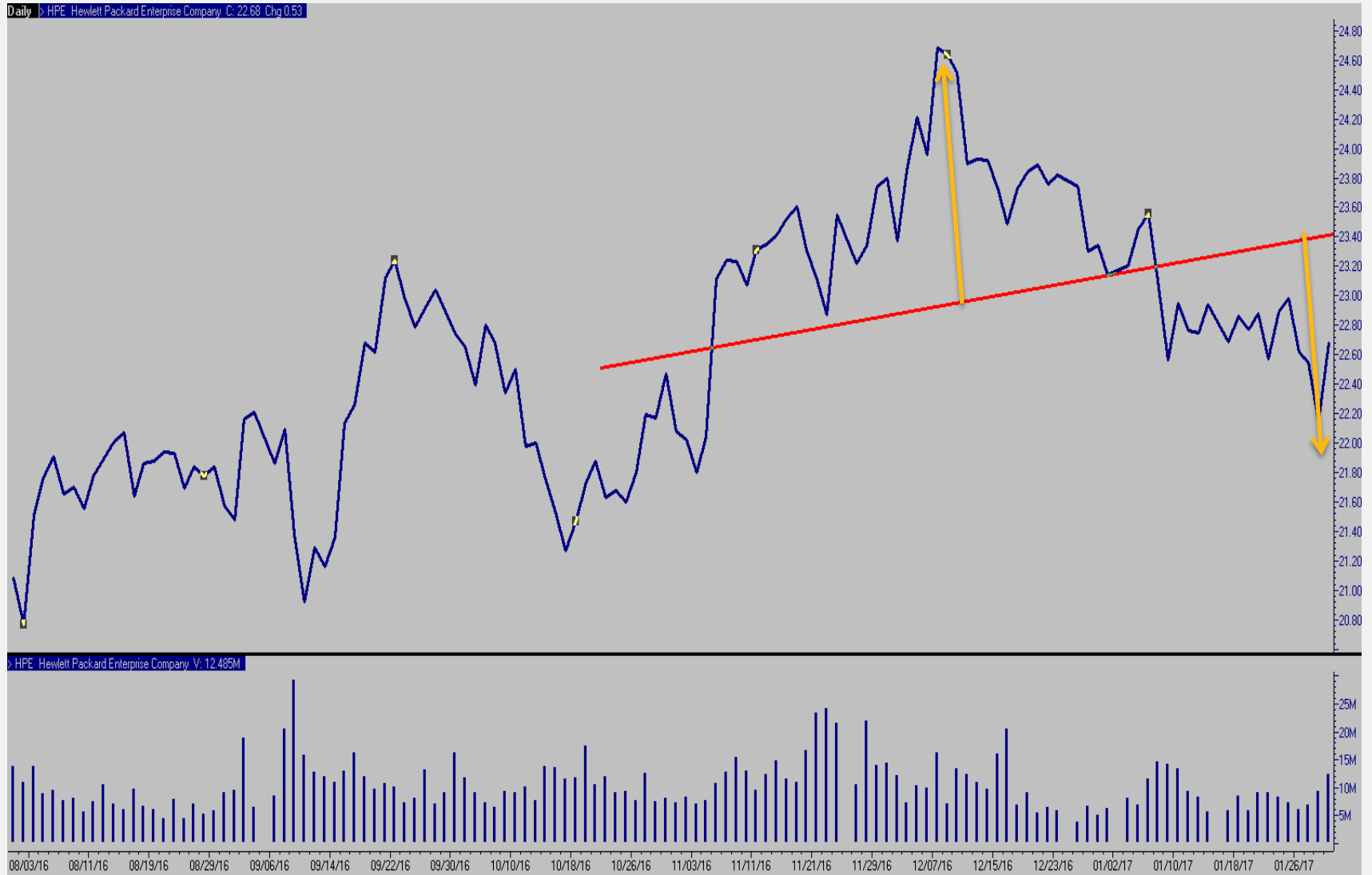
# DOUBLE TOP, DOUBLE BOTTOM



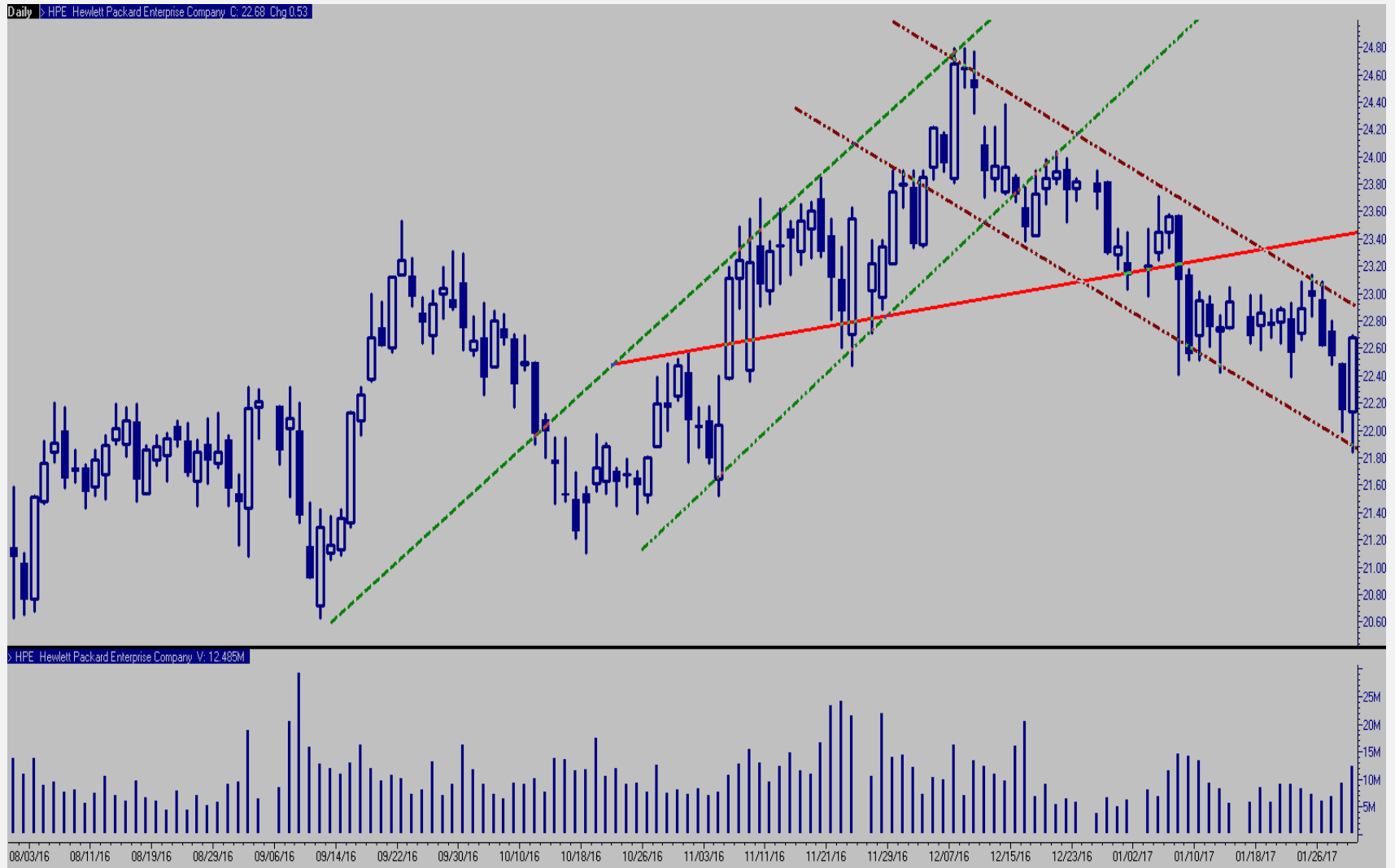
# HEAD AND SHOULDERS 1



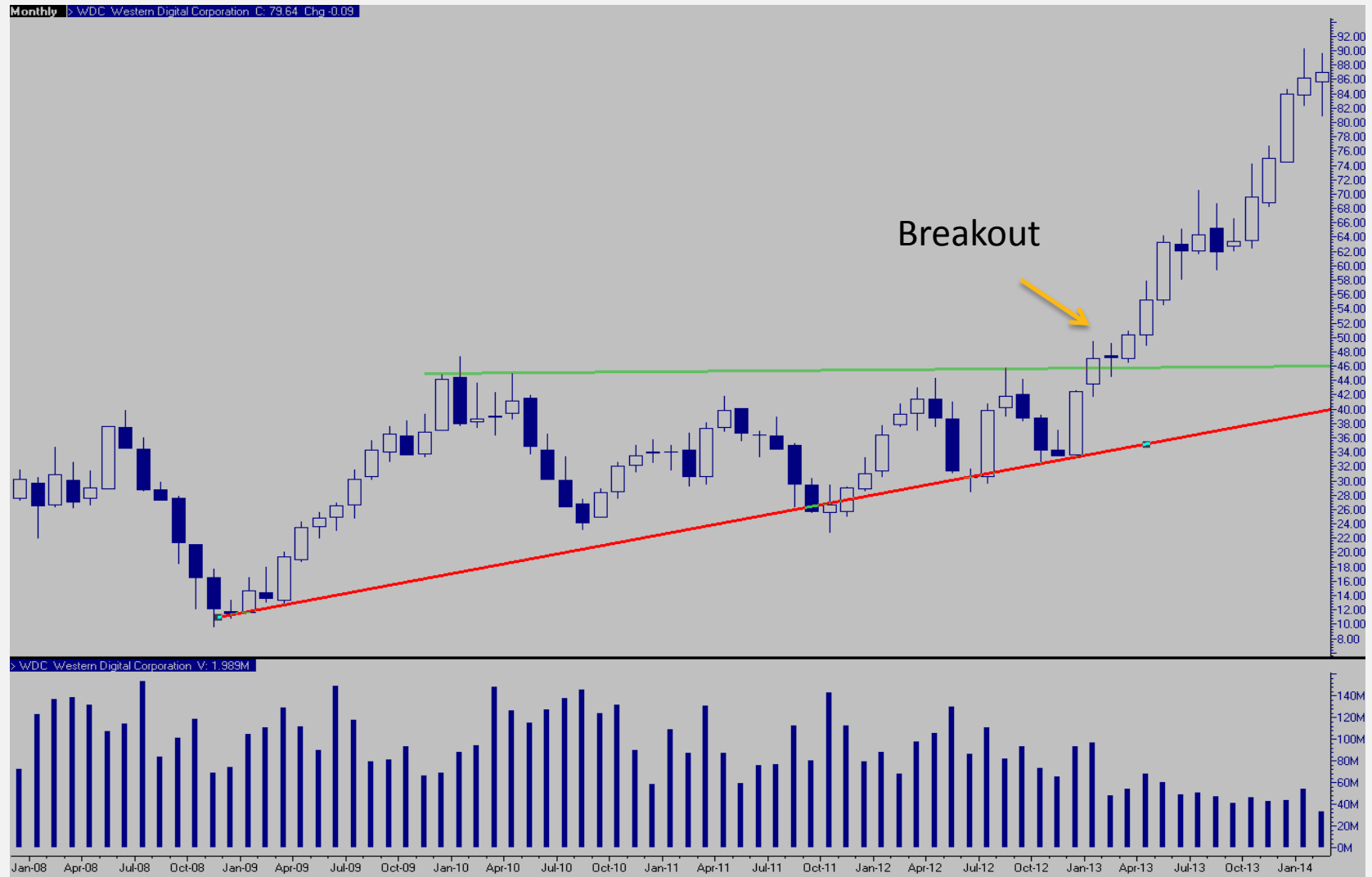
# HEAD AND SHOULDERS 2



# HEAD AND SHOULDERS 3



# PENANTS AND FLAGS



# MOVING AVERAGES: 50 DAY AND 200 DAY; DEATHCROSS



# RELATIVE STRENGTH INDEX (RSI)

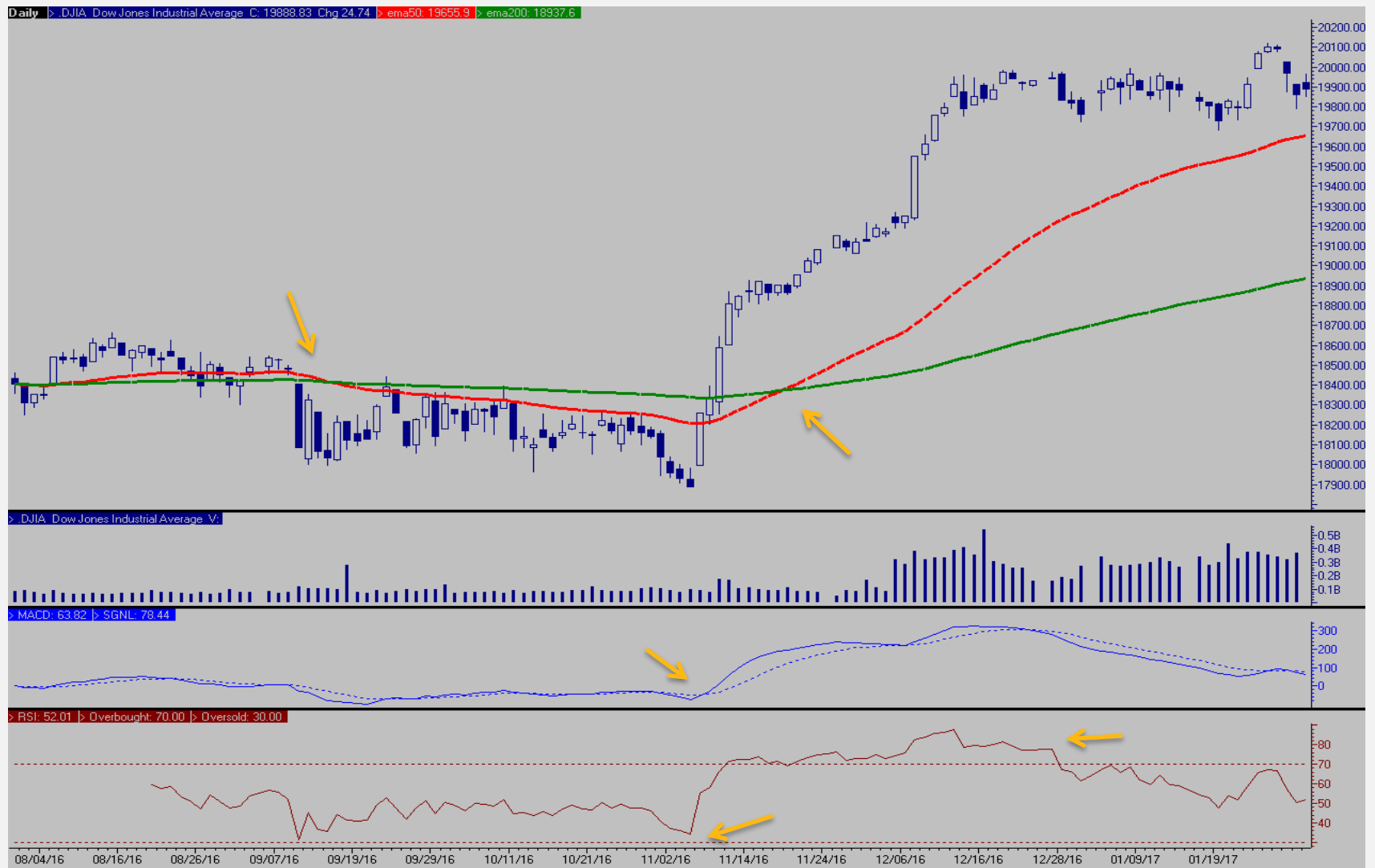




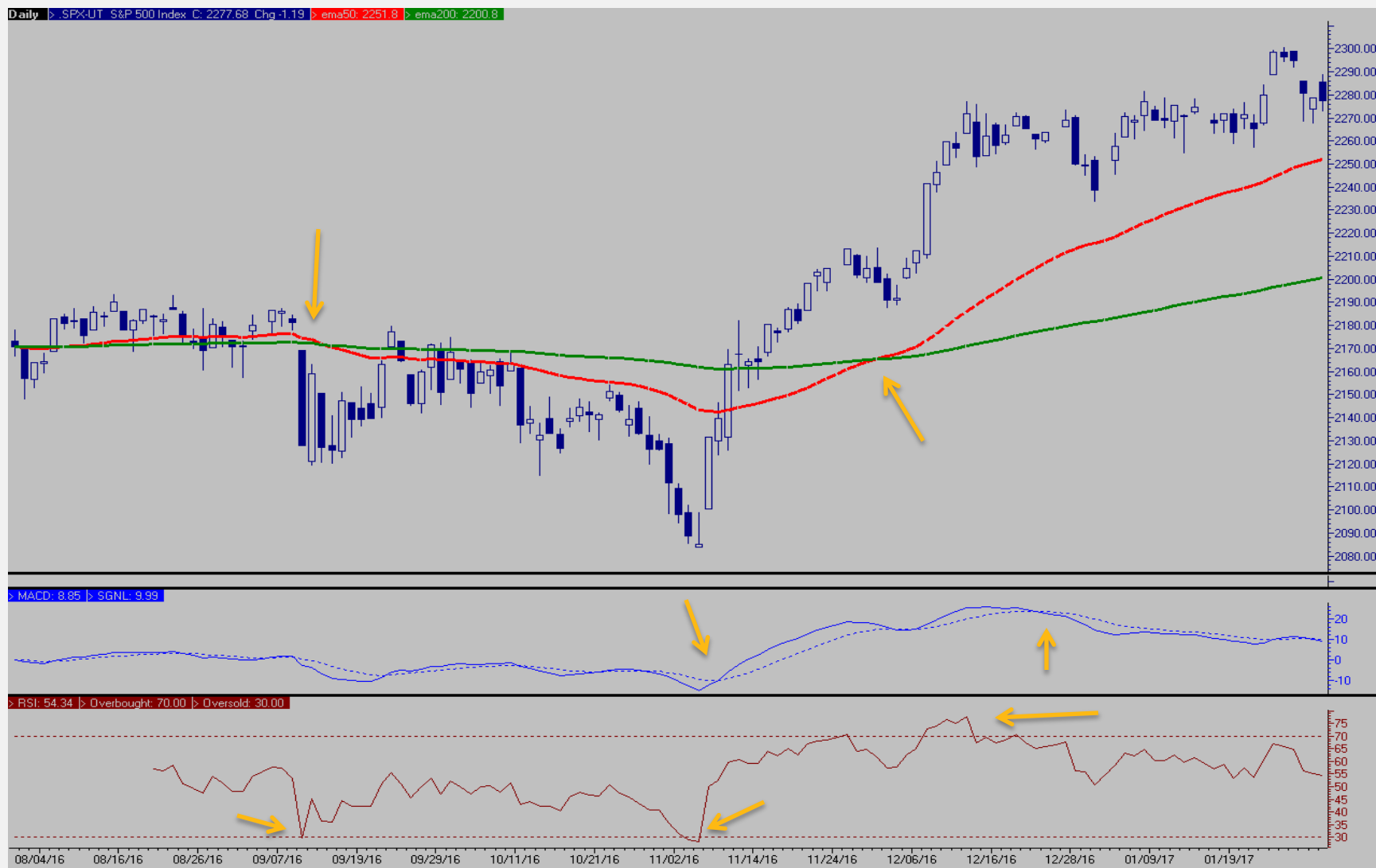
# MOVING AVERAGE CONVERGENCE/DIVERGENCE (MACD)



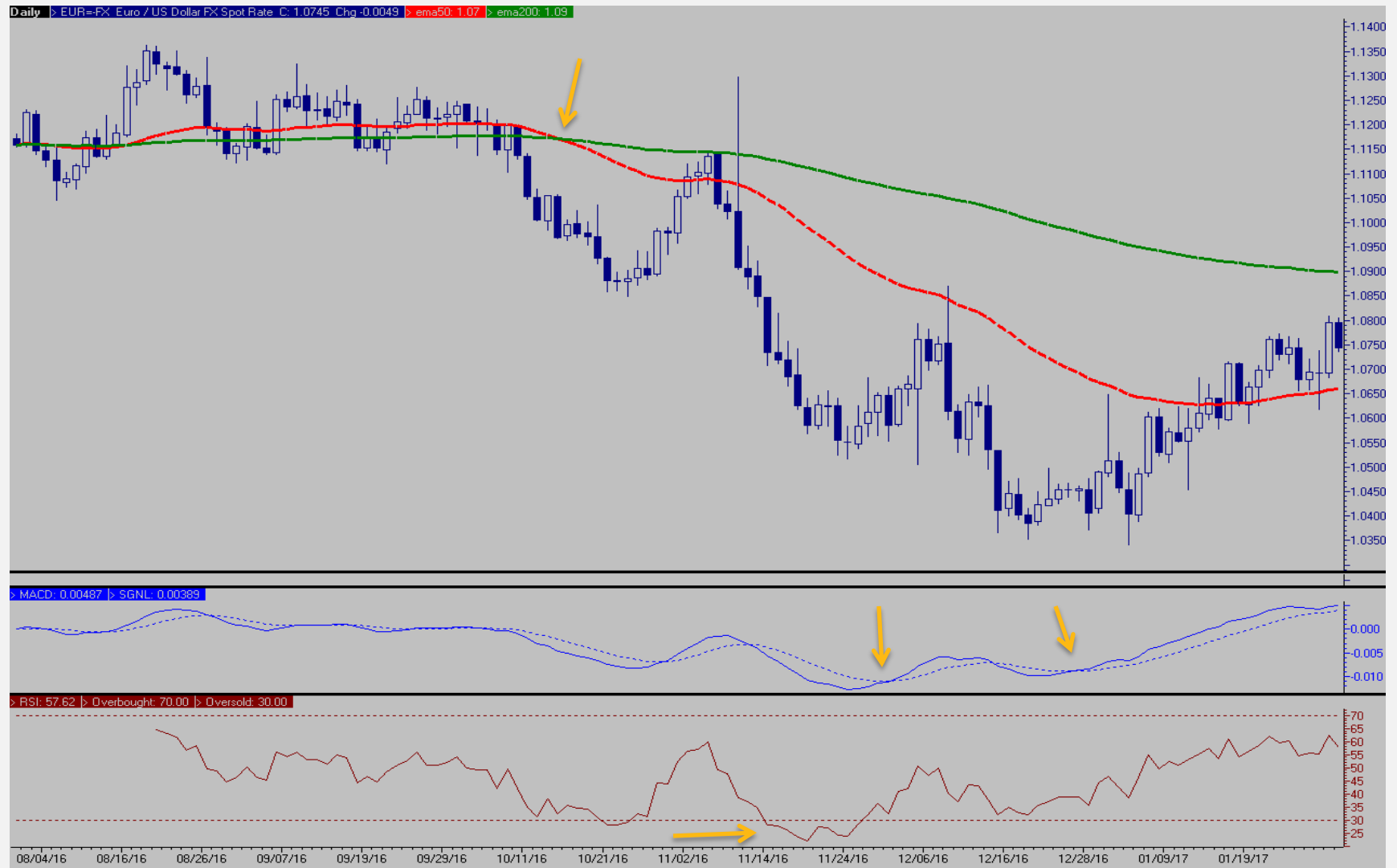
# DJIA



# S&P 500



# EUR/USD



# QUESTIONS?

JIM HARVEY SY  
SENIOR DIRECTOR  
ADVISORY SERVICES  
NASDAQ  
[Jimharvey.sy@nasdaq.com](mailto:Jimharvey.sy@nasdaq.com)

