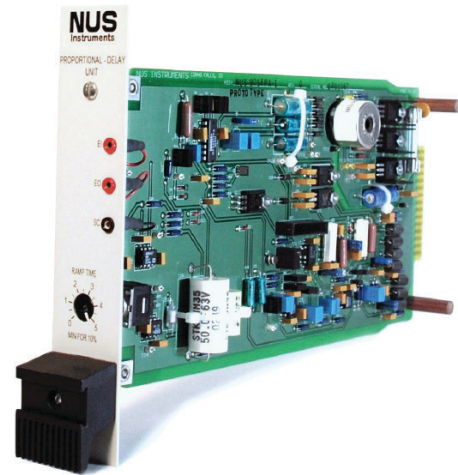


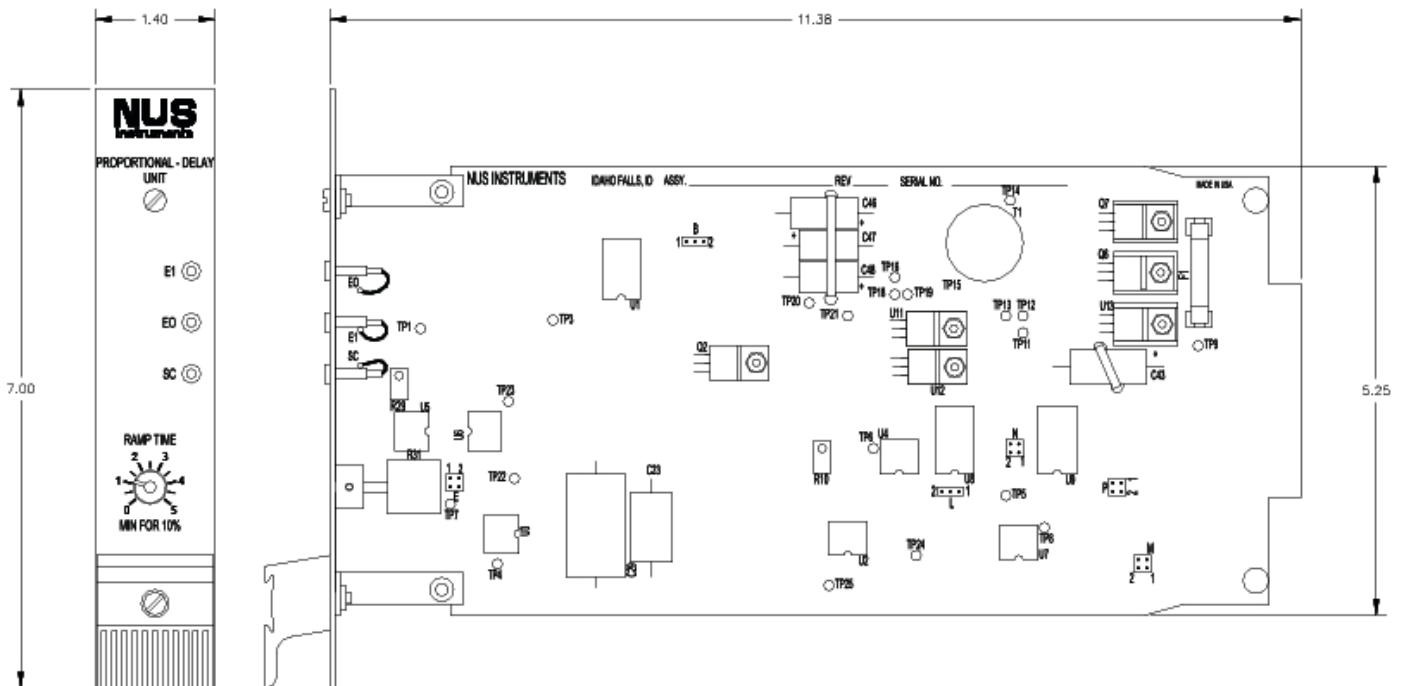
PRD2000-723 Proportional & Delay Module

The PRD2000-723 Proportional & Delay Module replaces the obsolete Bailey Type 723 proportional & delay module while retaining the functions of the Bailey module.

The PRD2000-723 provides an output current or voltage which is proportional to an input voltage, and has a solid state on/off output switching capability. The PRD2000-723 has an adjustable ramp time transfer control on the front panel which provides a “bumpless” ramp-type transfer when input and output signals are not equal at the time of transfer.



PRD2000-723



NUSI 2000 Series

Proportional & Delay Module

SPECIFICATIONS

Input Signal:	1 V to 5 Vdc. Input resistance > 1 M Ω
Output Signals:	1 V to 5 Vdc into > 1500 Ω 4 mA to 20 mA dc into 0 Ω to 750 Ω
Accuracy:	$\pm 0.3\%$ of span
Bias Input:	± 4 Vdc = $\pm 100\%$ of span Normal from set station: ± 0.8 Vdc = $\pm 20\%$ of span
Tracking Reference Signal:	1 V to 5 Vdc referenced to system signal common
External Tracking Signal:	1 V to 5 Vdc referenced to system signal common
Tracking Switch Signal:	+24 ± 2 Vdc
Ramp Time:	Adjustable; 0 minutes to 5 minutes for 10% of full span change
Frequency Response:	20 Hz ± 5 Hz
Power Supply Voltage:	0.150 A @ 24 Vdc ± 2 Vdc (20 V to 28 Vdc operative limits)
Operating Influence:	Supply Voltage: 24 Vdc ± 2 Vdc ($\pm 0.05\%$)
Ambient Temperature:	40 $^{\circ}$ F to 120 $^{\circ}$ F (5 $^{\circ}$ C to 49 $^{\circ}$ C) (normal operation) 0 $^{\circ}$ F to 140 $^{\circ}$ F (-18 $^{\circ}$ C to 60 $^{\circ}$ C) (operative limits)
Dimensions:	1.4 in x 7 in x 11.5 in
Weight:	Rack-mounted: < 1 lb
Mounting:	Bailey Type 761 Rack Unit
Legend:	Legend plate holder is integral with the withdrawal handle

For more information please request a
Proportional & Delay Operation & Maintenance Manual.

CONTACT INFORMATION:

Curtiss-Wright Nuclear Division / I&C Products
1350 Whitewater Drive, Idaho Falls, ID, 83402 T: (208) 497.3333